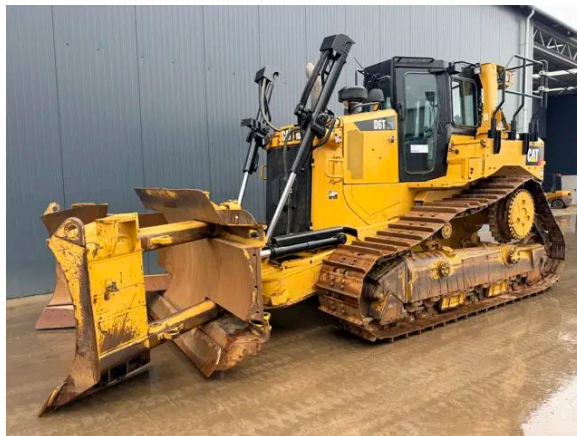


CATERPILLAR D6T XW | TRIMBLE GPS INTEGRATED | VPAT BLADE

Description

Caterpillar D6T XW, Engine brand Caterpillar, C9.3, 187kW, EPA, CE, Emission level Tier 4f, Air conditioning, Erops cabin, Foldable 6-way blade, Width of the blade 4,00m, Differential steering, Ripper valve, System one undercarriage, Width of the pads 610mm, AM/FM radio, Fast fuel system, New ripper available, ask for quotation, Trimble GPS system integrated , Hours certified by Caterpillar, In very good and clean condition.



Year	2017
Hours	11646
Weight	24.515 kg
Serial number	CAT00D6TK7C900107
Reference	210968

[Download photos](#)


CONTACT US:
SALES@SMITMA.COM
+31(0)773999840

New/Excellent
★★★★★

Very good
★★★★☆

Good
★★★☆☆

Fair
★★☆☆☆

Poor
★☆☆☆☆

Copyright Smitma BV



INSPECTION REPORT

FEATURES

Engine brand	Caterpillar
Engine model	C9.3
Engine power in kW	187kW
EPA	✓
CE	✓
Emission level	Tier 4f
Air conditioning	✓
Erops cabin	✓
Blade	Foldable 6-way blade
Width of the blade	4,00m
Steering	Differential steering
Ripper or valve	Ripper valve
Width of the pads	610mm
Fast fuel system	✓
New ripper available, ask for quotation	✓
Manual description	Trimble GPS system integrated
Hours	Hours certified by Caterpillar
Overall condition	In very good and clean condition.

DOCUMENTS

CE document	CE document available
Parts book	✓
Operation manual	✓

GENERAL APPEARANCE

Stamped serial number checked	Yes
Serial number plate checked	Yes
Paint	★★★★★
Decals	★★★★★
Bonnet	★★★★★
Engine cover doors	★★★★★
Chassis	★★★★★
Toolbox	★★★★★
Grab irons	★★★★★
Cabin	★★★★★

Belly plate	★★★★★
Pre-cleaner bowl	★★★★★

ENGINE DETAILS AND CONDITION

Engine number	SYE18867
Arrangement number	458-3884
Air cleaner	New
Anti-freeze level °C	-31°C
Diesel anti-freeze added	Yes
Diesel level ok	Yes
Cooling liquid level ok	Yes
Engine oil level ok	Yes
Exhaust manifold	★★★★★
Muffler	★★★★★
Exhaust stack	★★★☆☆
Engine supports	★★★★★
Hoses	★★★★★
Good cold start	Yes
Engine power	★★★★★
Blow by	★★★★★
Knocking	No
Compression in the radiator	No
Water in the oil	No
Oil in the water	No
Smoke	Normal
Engine leaks	No
Belts and pulleys	★★★★★
Fan	★★★★★
Radiator	★★★★★

UNDERCARRIAGE LEFT IN LIFE IN %

Overall condition	70%
Chains	60%
Bushings	80%
Sprockets	60%
Idlers	60%
Bottom rollers	40%
Top rollers	50%
Track pads	80%

OPERATOR STATION

Hourmeter	Working, hours certified by Caterpillar
Air conditioning	Working
Heater	Working
Gauges	Working
Switches	★★★★★
Display	★★★★★
Warning	No Warnings Available
Cabin glass	Not broken
Windshield wipers	Working
Interior lights	Working
Cabin floor	★★★★★
Interior roof	★★★★★
Seat	★★★★★

STEERING

Steering operating condition	★★★★★
------------------------------	-------

FRAME AND BLADE

Moldboard skin	★★★★★
Cutting edge	★★★★★
Play dozer frame	★★★★★
Note: Little play	
Play blade pin	★★★★★
Play push arms	★★★★★
Play lift cylinder	★★★★★
Note: Little play	
Lift cylinders leaking	No
Play tilt cylinder	★★★★★
Tilt cylinder leaking	No
Play angle cylinders	★★★★★
Angle cylinders leaking	No
Play equaliser bar	★★★★★
Cracks or welds	No

HYDRAULICS

Hydraulic oil level ok	Yes
Hydraulic lines and fittings	★★★★★
Hydraulic tank/sight glass and cap	★★★★★

Hydraulic valves leaking	No
Noise hydraulic pump normal	No
Operating condition hydraulics	★★★★★

BRAKE

Service brake operation	★★★★★
Parking brake operation	★★★★★

DRIVE TRAIN/TRANSMISSION

Transmission fully operational in all gears forward and reverse	Yes
Transmission oil level ok	Yes
Transmission noisy	No
Oil level left final drive ok	Yes
Oil level right final drive ok	Yes
Drive chain leaks	No

ELECTRICAL, STARTING AND CHARGING SYSTEM

Alternator functioning	Yes
Wiring	★★★★★
Batteries	★★★★★
Starter	★★★★★
Cabin lights working	Yes
Additional work lights working	Few lights don't work

SAFETY ITEMS

Seat belt	Available
Horn	Working

New/Excellent



Very good



Good



Fair



Poor



Copyright Smitma BV

