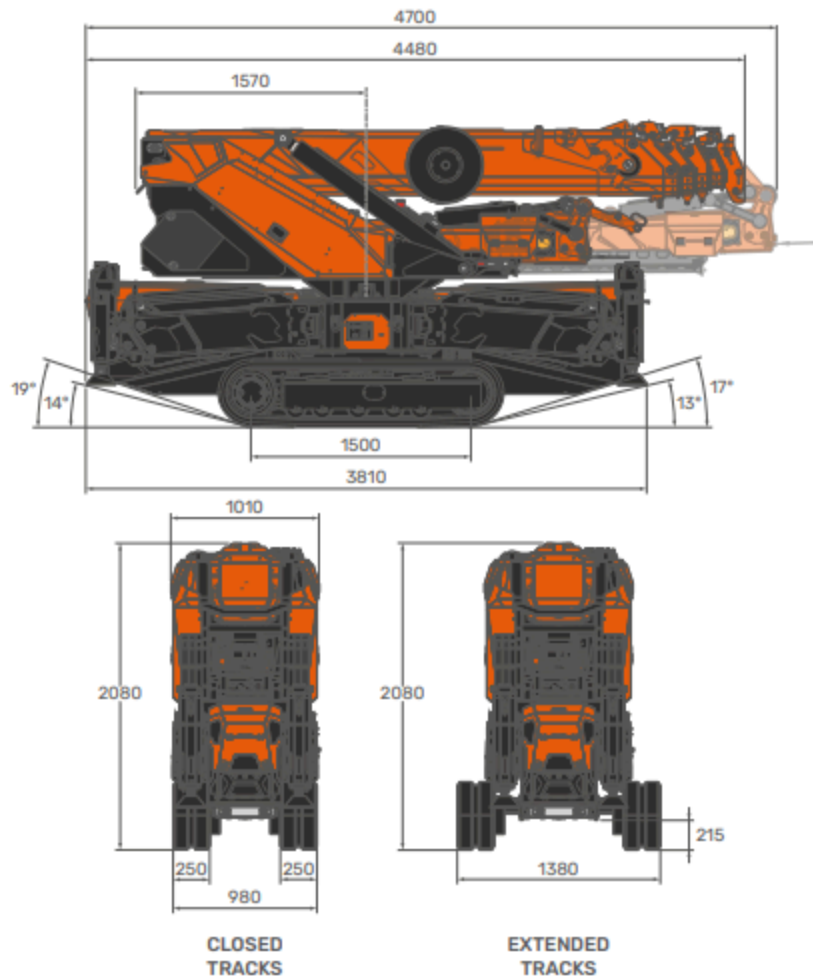


OVERALL DIMENSIONS



OVERALL INFORMATIONS

CRANE INFO

	DESCRIPTION	U.M.	VALUE
OVERALL DIMENSIONS	Height		2.080
	Length	mm	4,480
	Width		1.010
BOOM	Length	m	4,0/15,4
	Speed	s	40 (4,0/15,4 m)
SLEWING	Angle	°	360°
	Speed	rpm	1
LIFTING	Working Angle	°	0°/82°
	Speed	s	25 (0°/50°)
MAX CAPACITY		kg	5.000
MAX OUTRIGGERS MAX LOAD		kg	4.700 ¹⁾
TRACK LOAD		kg/cm ²	0,77
TRAVEL SPEED	Slow	km/h	1,9
	Fast		2,9
MAX GRADEABILITY		°	17°(30%)
WORKING TEMPERATURE		°C	-10°/+40°
MAX WIND SPEED IN WORKING CONDITIONS		m/s	13,8
Lifting Class (UNI 4301-1)			A1

¹⁾: Static lifting

SPX650 CL-2

Overall informations

09.05.2025 | REV2.0

WEIGHT



CRANE	Standard Configuration	kg	5.800 ^{①②}
	1 ton single line hook	kg	27
HOOKBLOCK	5T-D7		41

ACCESSORIES



JIB	2000GX	kg	50
	1200.3HX		480
	500GR		270
WINCH	W800.80-2	kg	52
	W800.85-P-2		70
HYDRAULIC ACTIVATION	HA-SPX650	kg	39
WINTER KIT	WUK-03.1	kg	3
OUTRIGGERS MATS	Outriggers mats (exagonal) (x4)	kg	28

^①: Dry weight

^②: Estimated fluids weight = 150 kg

MOTOR



ELECTRIC MOTORIZATION	Power Supply		Lithium Battery	
		Battery Voltage	V	46
		Battery Capacity	Ah	400
		Motor Power	kW	16

ELECTRICAL SYSTEM



POWER SUPPLY	CE	1 PH (230V) + N + PE
	UL-CSA	1 PH (110/220V) + N + PE
		2x 1 PH (110/220V) + PE

BATTERY CHARGER	CE	1 PH (230V) + N + PE	Charge	V	48
				Ah	40
	UL-CSA	1 PH (110/220V) + N + PE	Charge	V	48
				Ah	20
		2x 1 PH (110/220V) + PE	Charge	V	48
				Ah	40

EXTERNAL CHARGER



POWER SUPPLY	CE	3 PH (400V) + PE
--------------	----	------------------

BATTERY CHARGER	CE	3 PH (400V) + PE	Charge	V	48
				Ah	140

HYDRAULIC SYSTEM



MAX WORKING PRESSURE		bar	230
TANK CAPACITY		L	70
HYDRAULIC SYSTEM CAPACITY		L	120
OIL	OIL-1280	Biodegradable	ISO VG46
	ARTIC-OIL-1280	Mineral	ISO VG46
MAIN PUMP	Variable Displacement	cm ³ /rev	35
	Max Oil Flow	L/min	65