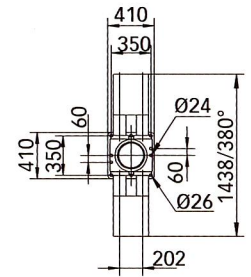
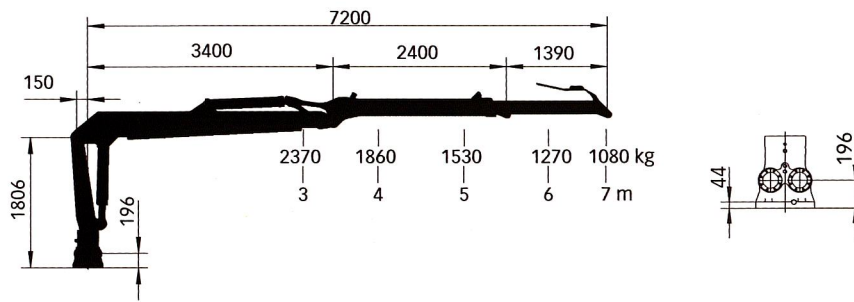
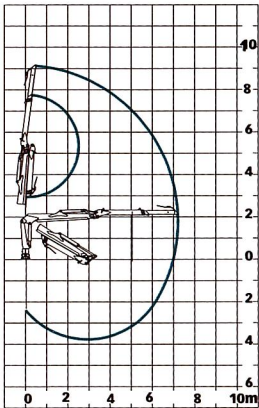


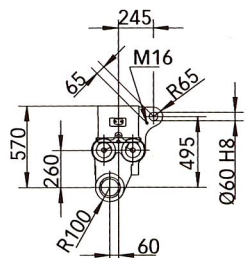
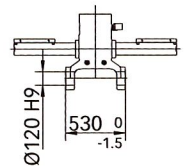
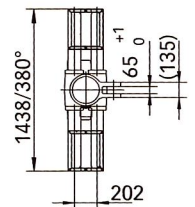
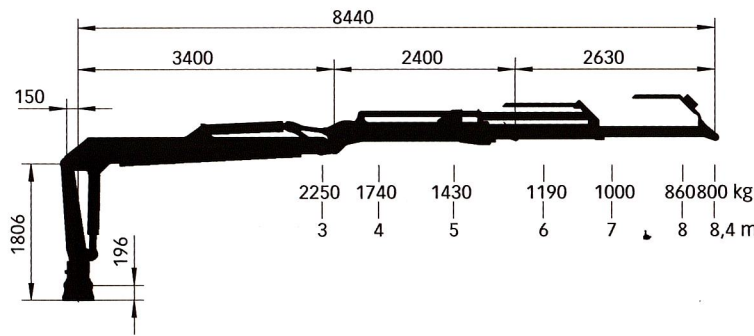
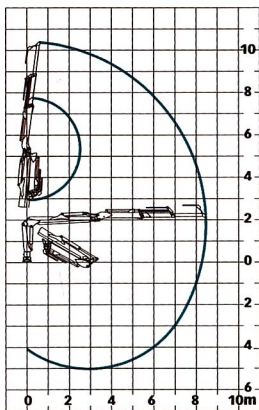


Mesera-Loglift 71 F, the popular favourite in the range, has built a name for itself due to its excellent loading properties and durability. The F 71 F can be equipped with a tilting base that improves loading on uneven terrain.

### F 71 F 72



### F 71 FT 85



### F 71 FT 100 / F 71 FT 100i

\* Hoses inside a telescopic boom also available (i-model).

