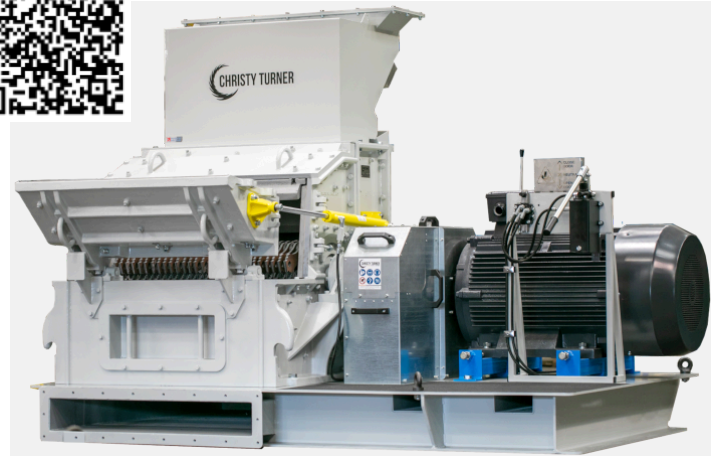


RPM REFERENCE:	PC2026-0111
MANUFACTURER:	CHRISTY TURNER
TYPE:	PULVERIZER
MODEL:	30 X 40
YEAR:	2022
CONDITION:	EXCELLENT
PRICE:	POA
LOCATION:	UNITED KINGDOM



Description

2022 Used Christy Turner 30 x 40 Pulveriser High Speed Hammermill

Excellent condition

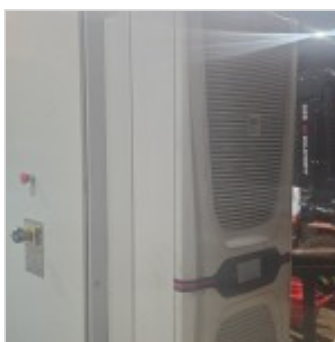
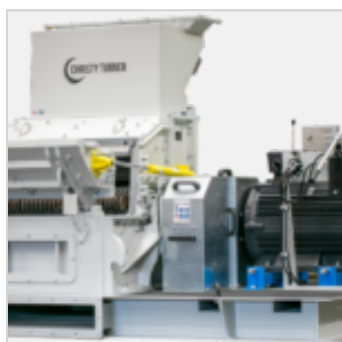
Comes complete with Rittal Blue e+ Air Con control unit, Mitsubishi FR-AF840 200kw Invertor, ducting and sound proof housing.

Materials Handled

- › Comingled Material Dry / Dry Mixed Recycling
- › Forestry
- › Glass Recycling
- › Green
- › Green Waste Compost
- › Plastics
- › RDF/SRF
- › Textiles
- › Wood

Industry Sectors

- > Forestry
- > Glass Recycling Plants
- > Green Waste Processing
- > Product Destruction
- > Recycling Plants
- > Security Shredding
- > Waste Management
- > Waste to Energy
- > Wood Waste Processing



Recycling Plant & Machinery Ltd
Beechwood House, Bryntwyod, Llangyfelach, Swansea, SA5 7LP
Office: +44 (0) 1792 702 173 Tel: +44 (0) 7834 585 247 Email: sales@thinkrpm.co.uk
Company Registration No. 7467439