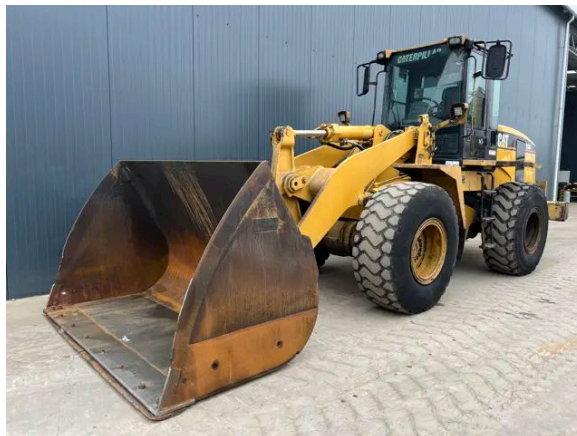


CATERPILLAR 938G

Description

Caterpillar 938G, Engine and model Caterpillar 3126, 108.2 kW, EPA, CE, Air conditioning, Erops cabin, 20.5R25, GP bucket with bolt on edge, Width of the bucket 2.50m, Complete steering wheel, Ride control, Autoshift, Backup alarm, Beacon, Hours certified by Caterpillar, In good and fairly clean condition.



Year	2000
Hours	14463
Weight	13.820 kg
Serial number	6WS02162
Reference	202880

[Download photos](#)


CONTACT US:
SALES@SMITMA.COM
+31(0)773999840

New/Excellent
★★★★★

Very good
★★★★☆

Good
★★★☆☆

Fair
★★★☆☆

Poor
★★★☆☆

INSPECTION REPORT

FEATURES

Engine and model	Caterpillar 3126
Engine power	108.2 kW
EPA	EPA
CE	✓
Erops cabin	✓
Tyre size	20.5R25
Bucket	GP bucket with bolt on edge
Width of the bucket	2.50m
Steering	Complete steering wheel
Ride control	✓
Autoshift	✓
Beacon	✓
Overall condition	In good and fairly clean condition.

DOCUMENTS

CE document	CE document available
Parts book	✓
Operation manual	✓

GENERAL APPEARANCE

Stamped serial number checked	Yes
Serial number plate checked	Yes
Paint	★ ★ ★ ★ ★
Decals	★ ★ ★ ★ ★
Bonnet	★ ★ ★ ★ ★
Chassis	★ ★ ★ ★ ★
Steps/ladders	★ ★ ★ ★ ★
Grab irons	★ ★ ★ ★ ★
Cabin	★ ★ ★ ★ ★
Pre-cleaner bowl	★ ★ ★ ★ ★

ENGINE DETAILS AND CONDITION

Engine number	6JK05831
EPA sticker available	Yes
Air cleaner	New

Anti-freeze level °C	-20 °C
Diesel anti-freeze added	Yes
Diesel level ok	Yes
Cooling liquid level ok	Yes
Engine oil level ok	Yes
Exhaust manifold	★★★★☆☆
Muffler	★★★★☆☆
Exhaust stack	★★★★☆☆
Engine supports	★★★★☆☆
Hoses	★★★★☆☆
Good cold start	Yes
Engine power	★★★★☆☆
Blow by	★★★★☆☆
Knocking	No
Compression in the radiator	No
Water in the oil	No
Oil in the water	No
Smoke	Normal
Engine leaks	No
Belts and pulleys	★★★★☆☆
Fan	★★★★☆☆
Radiator	★★★★☆☆

OPERATOR STATION

Hourmeter	Working, hours certified by Caterpillar
Air conditioning	Not working
Heater	Not working
Gauges	Not Working
Switches	★★★★☆☆
Warning	No warnings available
Mirrors	Not broken
Cabin glass	Small crack no need to repair
Windshield wipers	Working
Interior lights	Working
Cabin floor	★★★★☆☆
Interior roof	★★★★☆☆
Seat	★★★★☆☆
Door lock	Working

BUCKET

Overall condition of the bucket	★★★★★
Bottom	★★★★★
Sides	★★★★★
Cutting edge	★★★★★

FRAME

Play articulation point	★★★★★
Play loading frame	★★★★★
Play bucket pins	★★★★★
Crack or welds	Yes

HYDRAULICS

Hydraulic oil level ok	Yes
Hydraulic lines and fittings	★★★★★
Hydraulic tank/sight glass and cap	★★★★★
Hydraulic valves leaking	No
Noise hydraulic pump normal	Yes
Operating condition hydraulics	★★★★★

BRAKE

Brakelines	★★★★★
Service brake operation	★★★★★
Parking brake operation	★★★★★
Compressor	★★★★★

DRIVE TRAIN/TRANSMISSION

Transmission fully operational in all gears forward and reverse	Yes
Transmission oil level ok	Yes
Transmission noisy	No
Oil level front axle ok	Yes
Oil level rear axle ok	Yes
Drivetrain leaks	No

ELECTRICAL, STARTING AND CHARGING SYSTEM

Alternator functioning	Yes
Wiring	★★★★★

Batteries	★★★★★
Starter	★★★★★
Cabin lights working	Yes
Tail lights working	Few lights don't work

SAFETY ITEMS

Backup alarm	Working
Seat belt	Available
Horn	Working
Beacon	Working

TYRES

FRONT LEFT

Tread dept in mm	17mm
Percentage life remaining	30%
Retreaded	Yes

REAR LEFT

Tread dept in mm	23mm
Percentage life remaining	50%
Retreaded	Yes

REAR RIGHT

Tread dept in mm	24mm
Percentage life remaining	50%
Retreaded	Yes

FRONT RIGHT

Tread dept in mm	19mm
Percentage life remaining	40%
Retreaded	Yes

New/Excellent



Very good



Good



Fair



Poor



Copyright Smitma BV

