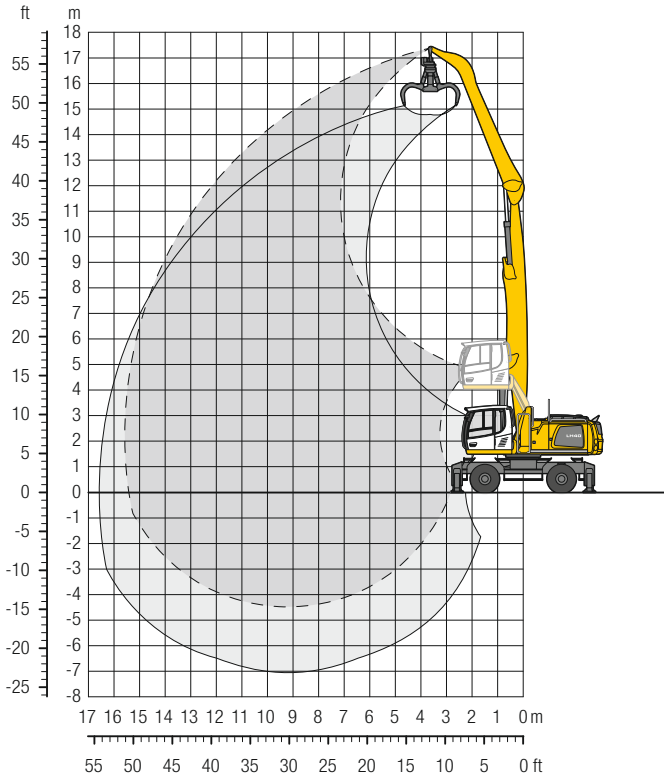
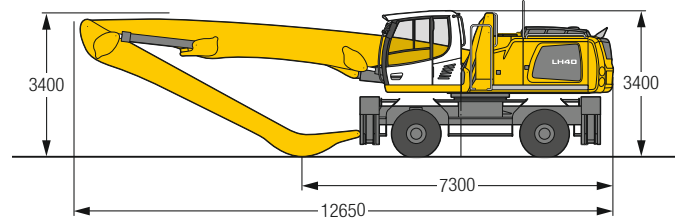


LH 40 M – Equipment GA16

Industry – Kinematic 2A



Dimensions



Operating weight

The operating weight includes the basic machine with 4 point outriggers, hydr. cab elevation, 8 solid tyres plus intermediate rings, straight boom 9.10 m, angled stick 6.80 m and multi-tine grab GM 65 / 0.60 m³ semi-closed tines.

Weight 38,500 kg

m	Undercarriage	4.5 m		6.0 m		7.5 m		9.0 m		10.5 m		12.0 m		13.5 m		15.0 m		16.5 m		18.0 m		Max. reach		m
		Stabilizers raised	4 pt. outriggers down	Stabilizers raised	4 pt. outriggers down	Stabilizers raised	4 pt. outriggers down	Stabilizers raised	4 pt. outriggers down	Stabilizers raised	4 pt. outriggers down	Stabilizers raised	4 pt. outriggers down	Stabilizers raised	4 pt. outriggers down	Stabilizers raised	4 pt. outriggers down	Stabilizers raised	4 pt. outriggers down	Stabilizers raised	4 pt. outriggers down	Stabilizers raised	4 pt. outriggers down	
16.5	Stabilizers raised			7.4*	7.4*																	7.0*	7.0*	6.2
	4 pt. outriggers down			7.4*	7.4*																	7.0*	7.0*	6.2
15.0	Stabilizers raised					6.6	7.6*															4.7	5.6*	8.9
	4 pt. outriggers down					7.6*	7.6*															5.6*	5.6*	8.9
13.5	Stabilizers raised					7.0	7.9*	5.0	6.4	3.6	4.7											3.4	4.4	10.8
	4 pt. outriggers down					7.9*	7.9*	6.9*	6.9*	5.5*	5.5*											4.9*	4.9*	10.8
12.0	Stabilizers raised					7.1	7.7*	5.1	6.5	3.8	4.9	2.8	3.7									2.7	3.6	12.2
	4 pt. outriggers down					7.7*	7.7*	6.8*	6.8*	6.1*	6.1*	5.0*	5.0*									4.6*	4.6*	12.2
10.5	Stabilizers raised					7.0	7.7*	5.1	6.5	3.8	4.9	2.8	3.8									2.2	3.0	13.2
	4 pt. outriggers down					7.7*	7.7*	6.8*	6.8*	6.1*	6.1*	5.5*	5.5*									4.3*	4.3*	13.2
9.0	Stabilizers raised					6.9	7.9*	5.0	6.4	3.7	4.8	2.8	3.8	2.1	2.9							1.9	2.6	14.0
	4 pt. outriggers down					7.9*	7.9*	6.9*	6.9*	6.1*	6.1*	5.5*	5.5*	4.7	5.0*							4.2*	4.2*	14.0
7.5	Stabilizers raised			9.5	9.6*	6.6	8.1*	4.8	6.2	3.6	4.7	2.8	3.7	2.1	2.9							1.7	2.4	14.7
	4 pt. outriggers down			9.6*	9.6*	8.1*	8.1*	7.0*	7.0*	6.2*	6.2*	5.5*	5.5*	4.7	5.0*							4.0	4.1*	14.7
6.0	Stabilizers raised	9.9*	9.9*	8.8	10.2*	6.1	7.9	4.5	5.9	3.4	4.5	2.6	3.5	2.0	2.8	1.6	2.2					1.5	2.2	15.1
	4 pt. outriggers down	9.9*	9.9*	10.2*	10.2*	8.4*	8.4*	7.2*	7.2*	6.3*	6.3*	5.6*	5.6*	4.6	5.0*	3.8	4.3*					3.8	4.1*	15.1
4.5	Stabilizers raised	12.1	14.4*	7.8	10.3	5.5	7.3	4.1	5.5	3.2	4.3	2.5	3.4	1.9	2.7	1.5	2.2					1.4	2.1	15.4
	4 pt. outriggers down	14.4*	14.4*	10.9*	10.9*	8.8*	8.8*	7.4*	7.4*	6.4*	6.4*	5.5	5.6*	4.5	5.0*	3.8	4.3*					3.6	4.0*	15.4
3.0	Stabilizers raised	10.0	14.0	6.8	9.2	4.9	6.7	3.7	5.1	2.9	4.0	2.3	3.2	1.8	2.6	1.5	2.1					1.3	2.0	15.6
	4 pt. outriggers down	15.7*	15.7*	11.6*	11.6*	9.2*	9.2*	7.6*	7.6*	6.5*	6.5*	5.3	5.6*	4.4	4.9*	3.7	4.2*					3.5	3.8*	15.6
1.5	Stabilizers raised	5.0*	5.0*	5.8	8.2	4.4	6.1	3.4	4.7	2.7	3.7	2.1	3.0	1.7	2.5	1.4	2.1					1.3	2.0	15.6
	4 pt. outriggers down	5.0*	5.0*	11.9*	11.9*	9.4*	9.4*	7.7*	7.7*	6.3	6.5*	5.2	5.6*	4.3	4.8*	3.7	4.0*					3.5	3.5*	15.6
0	Stabilizers raised	4.2*	4.2*	5.2	7.5	3.9	5.6	3.1	4.4	2.5	3.5	2.0	2.9	1.6	2.4	1.4	2.0					1.3	2.0	15.4
	4 pt. outriggers down	4.2*	4.2*	11.5*	11.5*	9.3*	9.3*	7.6	7.6*	6.1	6.4*	5.0	5.4*	4.2	4.6*	3.6*	3.6*					3.2*	3.2*	15.4
-1.5	Stabilizers raised	4.7*	4.7*	4.8	7.1	3.6	5.3	2.9	4.2	2.3	3.4	1.9	2.8	1.6	2.4							1.4	2.1	14.8
	4 pt. outriggers down	4.7*	4.7*	9.7*	9.7*	8.8*	8.8*	7.2*	7.2*	5.9	6.1*	4.9	5.1*	4.1*	4.1*							3.1*	3.1*	14.8
-3.0	Stabilizers raised			4.7	7.0	3.5	5.1	2.7	4.0	2.2	3.3	1.8	2.7									1.6	2.3	13.5
	4 pt. outriggers down			9.3*	9.3*	7.8*	7.8*	6.5*	6.5*	5.4*	5.4*	4.5*	4.5*									3.4*	3.4*	13.5
-4.5	Stabilizers raised																							
	4 pt. outriggers down																							

Height Can be slewed through 360° In longitudinal position of undercarriage Max. reach * Limited by hydr. capacity

The lift capacities on the stick end without attachment are stated in metric tons (t) and are valid on a firm, level supporting surface with blocked oscillating axle. These capacities can be slewed through 360° with the undercarriage in the transverse position. Capacities in the longitudinal position of the undercarriage (±15°) are specified over the steering axle with the stabilizers raised and over the rigid axle with the stabilizers down. Indicated loads based on the ISO 10567 standard and do not exceed 75% of tipping or 87% of hydraulic capacity. The lift capacity values indicated are attained at the corresponding operating temperature. This operating temperature is ensured by continuous movement of the boom. Weights of fitted attachments (grabs, load hooks, etc.) and load accommodation attachment are to be deducted from the lift capacity values. The lift capacity of the unit is limited by its stability, the lifting capability of the hydraulic elements, or the maximum permissible lifting capacity of the load hook.

In accordance with the harmonised European Standard EN 474-5, hydraulic excavators used for lifting operations must be equipped with pipe fracture safety valves, an overload warning device, a load hook and a lift capacity chart.