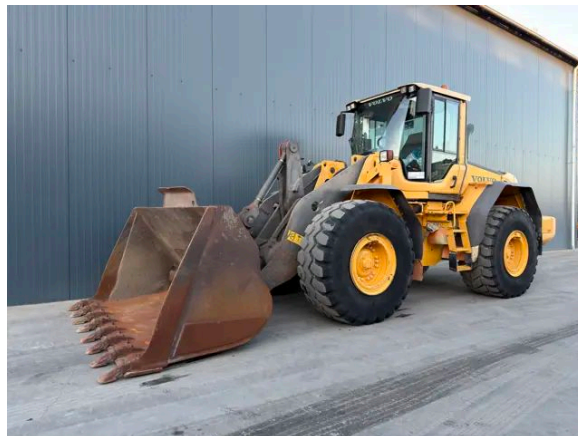


VOLVO L120F

Description

Volvo L120F, Engine and model Volvo D7E LAE3 EU, 179 kW, CE, Erops cabin, 23.5R25, GP bucket with teeth, Width of the bucket 2.88m, Complete steering wheel, Autoshift, Backup camera, Weight load indicator available but not tested, Cental lubrication available but not tested, Beacon, In very good and very clean condition.



Year	2011
Hours	17380
Weight	22.000 kg
Serial number	VCCL120FP00026365
Reference	210334

[Download photos](#)


CONTACT US:
SALES@SMITMA.COM
+31(0)773999840

New/Excellent
★★★★★

Very good
★★★★☆

Good
★★★☆☆

Fair
★★★☆☆

Poor
★★★☆☆


INSPECTION REPORT

FEATURES

Engine and model	Volvo D7E LAE3 EU
Engine power	179 kW
CE	✓
Erops cabin	✓
Tyre size	23.5R25
Bucket	GP bucket with teeth
Width of the bucket	2.88m
Steering	Complete steering wheel
Autoshift	✓
Central lubrication	Cental lubrication available but not tested
Beacon	✓
Overall condition	In very good and very clean condition.

DOCUMENTS

Parts book	✓
Operation manual	✓

GENERAL APPEARANCE

Stamped serial number checked	Yes
Serial number plate checked	Yes
Paint	★★★★★
Decals	★★★★★
Bonnet	★★★★★
Engine cover doors	★★★★★
Steps/ladders	★★★★★
Grab irons	★★★★★
Cabin	★★★★★
Pre-cleaner bowl	★★★★★

ENGINE DETAILS AND CONDITION

Engine number	1JH284116
Air cleaner	Clean
Anti-freeze level °C	-34°C
Diesel anti-freeze added	Yes
Diesel level ok	Yes

Cooling liquid level ok	Yes
Engine oil level ok	Yes
Exhaust manifold	★★★★★
Muffler	★★★★★
Exhaust stack	★★★★★
Engine supports	★★★★★
Hoses	★★★★★
Good cold start	Yes
Engine power	★★★★★
Blow by	★★★★★
Knocking	No
Compression in the radiator	No
Water in the oil	No
Oil in the water	No
Smoke	Normal
Engine leaks	No
Belts and pulleys	★★★★★
Fan	★★★★★
Radiator	★★★★★

OPERATOR STATION

Hourmeter	Working
Air conditioning	Not working
Heater	Working
Gauges	Working
Switches	★★★★★
Display	★★★★★
Warning	No warnings available
Mirrors	Not broken
Cabin glass	Not broken
Windshield wipers	Working
Interior lights	Working
Cabin floor	★★★★★
Interior roof	★★★★★
Seat	★★★★★
Door lock	Working

BUCKET

Overall condition of the bucket	★★★★★
---------------------------------	-------

Bottom	★★★★★
Sides	★★★★★
Teeth	★★★★★

FRAME

Play articulation point	★★★★★
Play loading frame	★★★★★
Play bucket pins	★★★★★
Crack or welds	No

HYDRAULICS

Hydraulic oil level ok	Yes
Hydraulic lines and fittings	★★★★★
Hydraulic tank/sight glass and cap	★★★★★
Hydraulic valves leaking	No
Noise hydraulic pump normal	Yes
Operating condition hydraulics	★★★★★

BRAKE

Service brake operation	★★★★★
Parking brake operation	★★★★★
Compressor	★★★★★

DRIVE TRAIN/TRANSMISSION

Transmission fully operational in all gears forward and reverse	Yes
Transmission oil level ok	Yes
Transmission noisy	No
Oil level front axle ok	Yes
Oil level rear axle ok	Yes

ELECTRICAL, STARTING AND CHARGING SYSTEM

Alternator functioning	Yes
Wiring	★★★★★
Batteries	★★★★★
Starter	★★★★★
Cabin lights working	Yes
Tail lights working	Yes
Additional work lights working	Few lights don't work

SAFETY ITEMS

Seat belt	Available
Horn	Working
Beacon	Working

TYRES

FRONT LEFT

Percentage life remaining	40%
---------------------------	-----

REAR LEFT

Percentage life remaining	60%
---------------------------	-----

REAR RIGHT

Percentage life remaining	30%
---------------------------	-----

FRONT RIGHT

Percentage life remaining	30%
---------------------------	-----

New/Excellent



Very good



Good



Fair



Poor



Copyright Smitma BV

