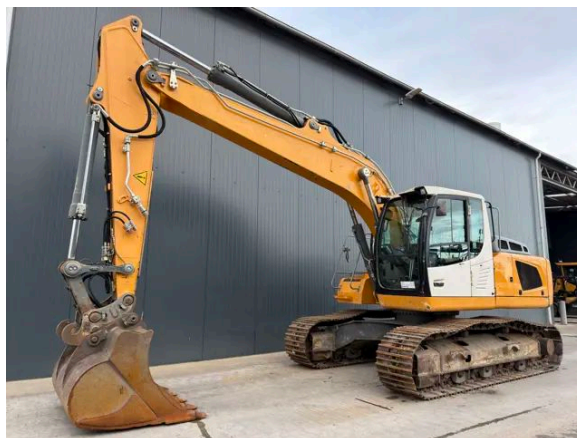


LIEBHERR R922 SLC

Description

Liebherr R922 SLC, Engine brand and model Liebherr D834 A7, 105 kW, EPA, CE, Central lubrication, Backup camera, Width of the pads 600mm, Mono boom, Length of the mono boom 5.40m, Length of the stick 2.70m, Hydraulic quick release, Liebherr SWA48, Digging bucket with teeth, Width of the bucket 1.48m, Piped for hammer & shear, Burst valve on lift and stick cylinder, In very good and clean condition.



Year	2014
Hours	8666
Weight	20.700 kg
Serial number	WLHZ1315LZC038801
Reference	209528

[Download photos](#)


CONTACT US:
SALES@SMITMA.COM
+31(0)773999840

New/Excellent
★★★★★

Very good
★★★★☆

Good
★★★☆☆

Fair
★★★☆☆

Poor
★★★☆☆

Copyright Smitma BV



INSPECTION REPORT

FEATURES

Engine brand and model	Liebherr D834 A7
Engine power in kW	105 kW
EPA	EPA
CE	✓
Width of the pads	600mm
Boom	Mono boom
Length of the mono boom	5.40m
Length of the stick	2.70m
Bucket	Digging bucket with teeth
Width of the bucket	1.48m
Piped	Piped for hammer & shear
Overall condition	In very good and clean condition.

DOCUMENTS

Parts book	✓
Operation manual	✓

GENERAL APPEARANCE

Stamped serial number checked	Yes
Serial number plate checked	Yes
Paint	★★★★★
Body work	★★★★★
Decals	★★★★★
Bonnet	★★★★★
Engine cover doors	★★★★★
Chassis	★★★★★
Bottom plates	★★★★★
Counter weight	★★★★★
Toolbox	★★★★★
Steps/ladders	★★★★★
Grab irons	★★★★★
Cabin	★★★★★
Pre-cleaner bowl	★★★★★
Cracks or welds	No

ENGINE DETAILS AND CONDITION

Engine number	2014 01 0119
EPA sticker available	Yes
Air cleaner	Clean
Anti-freeze level °C	-46°C
Diesel anti-freeze added	Yes
Diesel level ok	Yes
Cooling liquid level ok	Yes
Engine oil level ok	Yes
Exhaust manifold	★★★★☆☆
Muffler	★★★★☆☆
Exhaust stack	★★★★☆☆
Engine supports	★★★★☆☆
Hoses	★★★★☆☆
Good cold start	Yes
Engine power	★★★★☆☆
Blow by	★★★★☆☆
Knocking	No
Compression in the radiator	No
Water in the oil	No
Oil in the water	No
Smoke	Normal
Engine leaks	No
Belts and pulleys	★★★★☆☆
Fan	★★★★☆☆
Radiator	★★★★☆☆

BUCKET

Overall condition of the bucket	★★★★☆☆
Bottom	★★★★☆☆
Sides	★★★★☆☆
Teeth	★★★★☆☆

UNDERCARRIAGE LEFT IN LIFE IN %

Overall condition	60%
Chains	70%
Bushings	70%
Sprockets	70%

Idlers	80%
Bottom rollers	30%
Top rollers	50%
Track pads	70%

SAFETY ITEMS

Backup camera	Working
Seat belt	Available
Horn	Working

OPERATOR STATION

Hourmeter	Working
Air conditioning	Not Working
Heater	Working
Gauges	Working
Switches	★★★★★
Display	★★★★★
Warning	No warnings available
Mirrors	Not broken
Cabin glass	Not broken
Windshield wipers	Working
Interior lights	Working
Cabin floor	★★★★★
Interior roof	★★★★★
Seat	★★★★★

HYDRAULICS

Hydraulic oil level ok	Yes
Hydraulic lines and fittings	★★★★★
Hydraulic tank/sight glass and cap	★★★★★
Travel motors	★★★★★
High and low travel speed working	Working
Oil level left final drive ok	Yes
Left final drive leaking	No
Oil level right final drive ok	Yes
Right final drive leaking	No
Hydraulic valves leaking	No
Noise hydraulic pump normal	Yes
Operating condition hydraulics	★★★★★

BOOM AND STICK

Play lift cylinder	★★★★★
Lift cylinders leaking	No
Play boom pen	★★★★★
Play stick cylinder	★★★★★
Stick cylinder leaking	No
Play stick pen	★★★★★
Note: Little play	
Play bucket cylinder	★★★★★
Bucket cylinder leaking	No
Play bucket link	★★★★★
Play bucket pen	★★★★★
Condition monoboam	★★★★★
Condition stick	★★★★★

SWING CIRCLE

Play on the swing bearing	★★★★★
Swing gear	★★★★★
Swing drive oil level ok	Yes
Swing drive leaking	No
Swing brake operating	Yes
Swing noise normal	Yes
Hydraulic swivel leaking	No
Operating condition	★★★★★

ELECTRICAL, STARTING AND CHARGING SYSTEM

Alternator functioning	Yes
Wiring	★★★★★
Batteries	★★★★★
Starter	★★★★★
Cabin lights working	Yes

New/Excellent
★★★★★

Very good
★★★★★

Good
★★★★★

Fair
★★★★★

Poor
★★★★★

