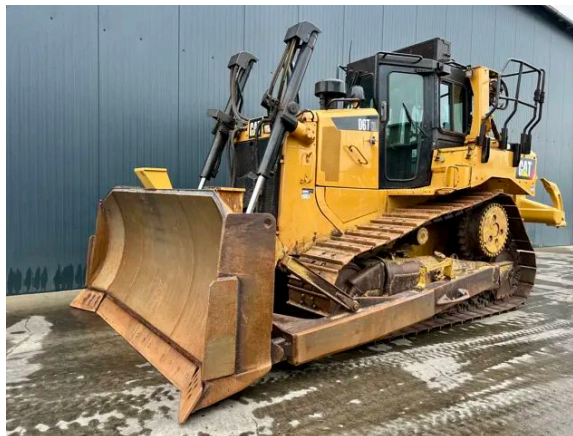


CATERPILLAR D6T XL

Description

Caterpillar D6T XL, Engine brand Caterpillar , C9.3, 190 kW, EPA, CE, Air conditioning, Erops cabin, Straight tilt blade, Width of the blade 3.25m, Differential steering, Multi shank ripper, Width of the pads 610mm , Backup camera, Prepared for GPS, Beacon, Hours certified by Caterpillar, In very good and very clean condition.



Year	2015
Hours	13023
Weight	21.180 kg
Serial number	CAT00D6TLMEL00114
Reference	208102

[Download photos](#)


CONTACT US:
SALES@SMITMA.COM
+31(0)773999840

New/Excellent
★★★★★

Very good
★★★★☆

Good
★★★☆☆

Fair
★★★☆☆

Poor
★★★☆☆

INSPECTION REPORT

FEATURES

Engine brand	Caterpillar
Engine model	C9.3
Engine power in kW	190 kW
EPA	✓
CE	✓
Air conditioning	✓
Erops cabin	✓
Blade	Straight tilt blade
Width of the blade	3.25m
Steering	Differential steering
Ripper or valve	Multi shank ripper
Width of the pads	610mm
Overall condition	In very good and very clean condition.

DOCUMENTS

Parts book	✓
Operation manual	✓

GENERAL APPEARANCE

Stamped serial number checked	Yes
Serial number plate checked	Yes
Paint	★★★★★
Decals	★★★★★
Bonnet	★★★★★
Engine cover doors	★★★★★
Chassis	★★★★★
Grab irons	★★★★★
Cabin	★★★★★
Belly plate	★★★★★
Pre-cleaner bowl	★★★★★

ENGINE DETAILS AND CONDITION

Engine number	SYE04241
Arrangement number	416-8790
EPA sticker available	Yes

Air cleaner	Clean
Anti-freeze level °C	-50°C
Diesel anti-freeze added	Yes
Diesel level ok	Yes
Cooling liquid level ok	Yes
Engine oil level ok	Yes
Exhaust manifold	★★★★★
Muffler	★★★★★
Exhaust stack	★★★★★
Engine supports	★★★★★
Hoses	★★★★★
Good cold start	Yes
Engine power	★★★★★
Blow by	★★★★★
Knocking	No
Compression in the radiator	No
Water in the oil	No
Oil in the water	No
Smoke	Normal
Engine leaks	No
Belts and pulleys	★★★★★
Fan	★★★★★
Radiator	★★★★★

UNDERCARRIAGE LEFT IN LIFE IN %

Overall condition	65%
Chains	70%
Bushings	50%
Sprockets	70%
Idlers	70%
Bottom rollers	70%
Top rollers	80%
Track pads	40%

OPERATOR STATION

Hourmeter	Working, hours certified by Caterpillar
Air conditioning	Working
Gauges	Working
Switches	★★★★★

Display	★★★★★
Warning	No Warnings Available
Cabin glass	Not broken
Windshield wipers	Working
Interior lights	Working
Cabin floor	★★★★★
Interior roof	★★★★★
Seat	★★★★★
Door lock	Working

STEERING

Steering operating condition	★★★★★
------------------------------	-------

FRAME AND BLADE

Moldboard skin	★★★★★
Cutting edge	★★★★★
Play dozer frame	★★★★★
Play blade pin	★★★★★
Play push arms	★★★★★
Play lift cylinder	★★★☆☆
Note: Little play Yoke	
Lift cylinders leaking	No
Play tilt cylinder	★★★★★
Tilt cylinder leaking	No
Play equaliser bar	★★★★★
Cracks or welds	No

RIPPER

Play ripper	★★★★★
Cylinders leaking	No
Ripper frame	★★★★★
Number of ripper shanks	3

HYDRAULICS

Hydraulic oil level ok	Yes
Hydraulic lines and fittings	★★★★★
Hydraulic tank/sight glass and cap	★★★★★
Hydraulic valves leaking	No
Noise hydraulic pump normal	Yes
Operating condition hydraulics	★★★★★

BRAKE

Service brake operation	★★★★★
Parking brake operation	★★★★★

DRIVE TRAIN/TRANSMISSION

Transmission fully operational in all gears forward and reverse	Yes
Transmission oil level ok	Yes
Transmission noisy	No
Oil level left final drive ok	Yes
Oil level right final drive ok	Yes
Drive chain leaks	No

ELECTRICAL, STARTING AND CHARGING SYSTEM

Alternator functioning	Yes
Wiring	★★★★★
Batteries	★★★★★
Starter	★★★★★
Cabin lights working	Yes
Additional work lights working	Yes

SAFETY ITEMS

Backup alarm	Working
Backup camera	Working
Seat belt	Available
Horn	Working
Beacon	Working

New/Excellent
★★★★★

Very good
★★★★★

Good
★★★★★

Fair
★★★★★

Poor
★★★★★

