

USED MACHINERY - Information



Email: sales@thinkrpm.co.uk Tel: 01792 949752

RPM REFERENCE:	PC2024-0248
MANUFACTURER:	LJH
TYPE:	MOBILE PICKING LINE
MODEL:	3 BAY
YEAR:	2004
HOURS:	9800
CONDITION:	GOOD WORKING ORDER
PRICE:	£28000.00



Description

Year 2004

Feed | Manage Consent | inclined conveyor section with heavy-duty impact bars under belt at feed point.

Inclined feed conveyor up onto horizontal section for manual selection.

The conveyor will be fitted with a 1200 mm wide Chevron belt being supported by low friction polyurethane skid strips with a variable speed control.

Three picking stations on both sides of belt each consisting of 1200mm x 400mm chutes with adjacent Mounted emergency stops buttons.

Picking section will be housed with canvas cover.

Lighting & heating over picking section

Access to picking section up from ground level, by stairs, mounted at rear end of machine. Complete with hydraulic lift.

Kubota diesel drive powerpack

Single axle on rear end with air brakes.

Suspended Permanent overband magnet

Engine Hours: Low hours due to machine being powered off a separate powerpack

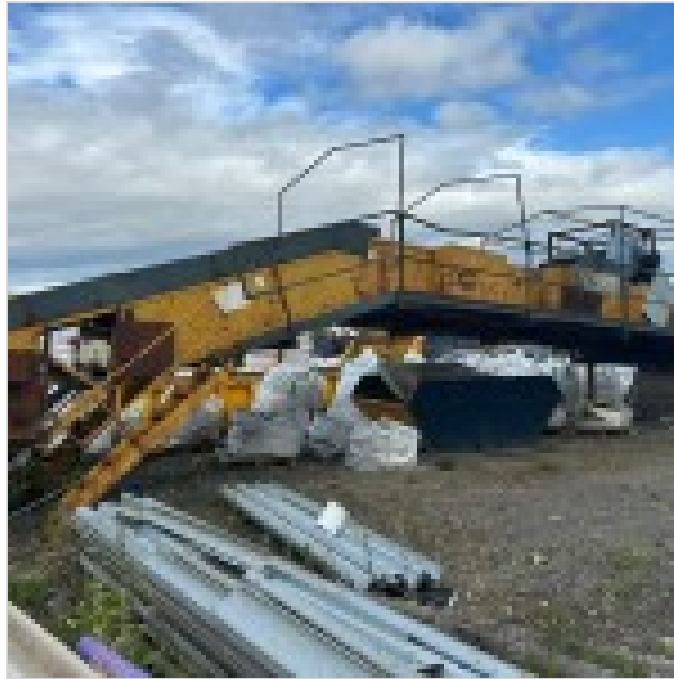
Materials Handled

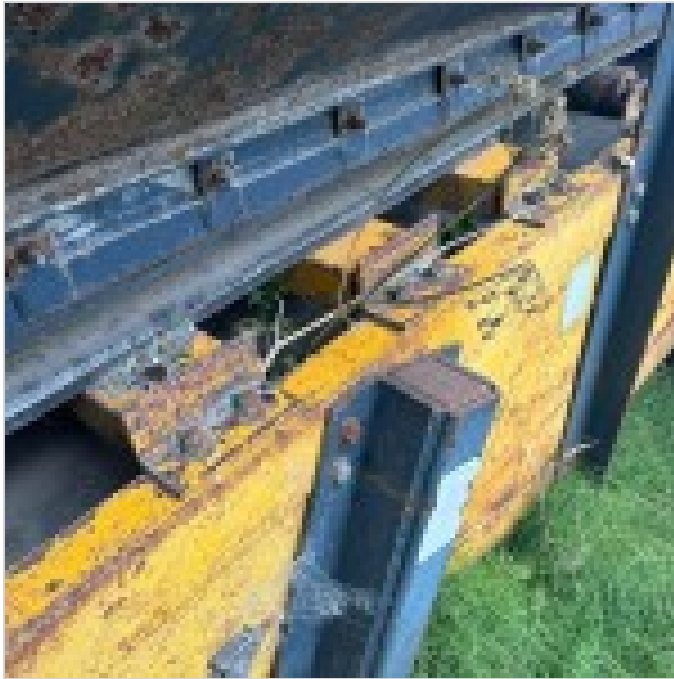
- > C&D Waste
- > C&I Waste
- > Cardboard
- > Comingled Material Dry / Dry Mixed Recycling
- > Glass Recycling
- > Green Waste Compost
- > Paper
- > Plastics

- > PVC
- > RDF/SRF
- > Recycled Aggregates
- > Wood

Industry Sectors

- > Facilities Management
- > Glass Recycling Plants
- > Green Waste Processing
- > Plastics Recycling
- > Recycling Plants
- > Waste Management
- > Waste to Energy
- > Wood Waste Processing









Beechwood House, Bryntywod, Llangyfelach, Swansea SA5 7LP Tel: 01792 949752