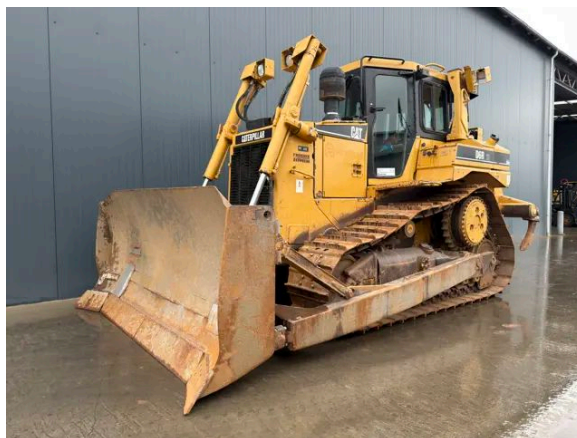


CATERPILLAR D6R III XL

Description

Caterpillar D6R III XL, Engine brand Caterpillar , C9, 149 kW, CE, Air conditioning, Erops cabin, Straight tilt blade, Width of the blade 3.24m, Differential steering, Multi shank ripper, Width of the pads 610mm, Total frame hours: 23.000H and 8.540 hours after CAT rebuild. , Hours certified by Caterpillar, In very good and clean condition.



| | |
|---------------|-------------------|
| Year | 2007 |
| Hours | 8540 |
| Weight | 16.703 kg |
| Serial number | CAT00D6RJLFM00267 |
| Reference | 209898 |

[Download photos](#)


CONTACT US:
SALES@SMITMA.COM
+31(0)773999840

New/Excellent



Very good



Good



Fair



Poor



INSPECTION REPORT

FEATURES

| | |
|--------------------|---|
| Engine brand | Caterpillar |
| Engine model | C9 |
| Engine power in kW | 149 kW |
| CE | ✓ |
| Air conditioning | ✓ |
| Erops cabin | ✓ |
| Blade | Straight tilt blade |
| Width of the blade | 3.24m |
| Steering | Differential steering |
| Ripper or valve | Multi shank ripper |
| Width of the pads | 610mm |
| Manual description | Total frame hours: 23.000H and 8.540 hours after CAT rebuild. |
| Hours | Hours certified by Caterpillar |
| Overall condition | In very good and clean condition. |

DOCUMENTS

| | |
|------------------|---|
| Parts book | ✓ |
| Operation manual | ✓ |

GENERAL APPEARANCE

| | |
|-------------------------------|-------|
| Stamped serial number checked | Yes |
| Serial number plate checked | Yes |
| Paint | ★★★★★ |
| Decals | ★★★★★ |
| Bonnet | ★★★★★ |
| Engine cover doors | ★★★★★ |
| Chassis | ★★★★★ |
| Grab irons | ★★★★★ |
| Cabin | ★★★★★ |
| Belly plate | ★★★★★ |
| Pre-cleaner bowl | ★★★★★ |

ENGINE DETAILS AND CONDITION

| | |
|---------------|----------|
| Engine number | DYA01609 |
|---------------|----------|

| | |
|-----------------------------|---------|
| Arrangement number | 20R1784 |
| Air cleaner | New |
| Anti-freeze level °C | -34°C |
| Diesel anti-freeze added | Yes |
| Diesel level ok | Yes |
| Cooling liquid level ok | Yes |
| Engine oil level ok | Yes |
| Exhaust manifold | ★★★★★ |
| Muffler | ★★★★★ |
| Exhaust stack | ★★★★★ |
| Hoses | ★★★★★ |
| Good cold start | Yes |
| Engine power | ★★★★★ |
| Blow by | ★★★★★ |
| Knocking | No |
| Compression in the radiator | No |
| Water in the oil | No |
| Oil in the water | No |
| Smoke | Normal |
| Belts and pulleys | ★★★★★ |
| Fan | ★★★★★ |
| Radiator | ★★★★★ |

UNDERCARRIAGE LEFT IN LIFE IN %

| | |
|-------------------|-----|
| Overall condition | 60% |
| Chains | 50% |
| Bushings | 50% |
| Sprockets | 70% |
| Idlers | 70% |
| Bottom rollers | 40% |
| Top rollers | 70% |
| Track pads | 70% |

OPERATOR STATION

| | |
|------------------|---|
| Hourmeter | Working, hours certified by Caterpillar |
| Air conditioning | Working |
| Heater | Working |
| Gauges | Working |
| Switches | ★★★★★ |

| | |
|-------------------|-----------------------|
| Display | ★★★★★ |
| Warning | No Warnings Available |
| Cabin glass | Not broken |
| Windshield wipers | Working |
| Interior lights | Working |
| Cabin floor | ★★★★★ |
| Interior roof | ★★★★★ |
| Seat | ★★★★★ |

STEERING

| | |
|------------------------------|-------|
| Steering operating condition | ★★★★★ |
|------------------------------|-------|

FRAME AND BLADE

| | |
|------------------------|-------|
| Moldboard skin | ★★★★★ |
| Cutting edge | ★★★★★ |
| Play dozer frame | ★★★★★ |
| Play blade pin | ★★★★★ |
| Play push arms | ★★★★★ |
| Play lift cylinder | ★★★★★ |
| Lift cylinders leaking | No |
| Play tilt cylinder | ★★★★★ |
| Tilt cylinder leaking | No |
| Play equaliser bar | ★★★★★ |
| Cracks or welds | Yes |
| Note: Blade | |

RIPPER

| | |
|-------------------------|-------|
| Play ripper | ★★★★★ |
| Cylinders leaking | No |
| Ripper frame | ★★★★★ |
| Number of ripper shanks | 3 |

HYDRAULICS

| | |
|------------------------------------|-------|
| Hydraulic oil level ok | Yes |
| Hydraulic lines and fittings | ★★★★★ |
| Hydraulic tank/sight glass and cap | ★★★★★ |
| Hydraulic valves leaking | No |
| Noise hydraulic pump normal | Yes |
| Operating condition hydraulics | ★★★★★ |

BRAKE

| | |
|-------------------------|-------|
| Service brake operation | ★★★★★ |
| Parking brake operation | ★★★★★ |

DRIVE TRAIN/TRANSMISSION

| | |
|---|-----|
| Transmission fully operational in all gears forward and reverse | Yes |
| Transmission oil level ok | Yes |
| Transmission noisy | No |
| Oil level left final drive ok | Yes |
| Oil level right final drive ok | Yes |
| Drive chain leaks | No |

ELECTRICAL, STARTING AND CHARGING SYSTEM

| | |
|------------------------|-----------------------|
| Alternator functioning | Yes |
| Wiring | ★★★★★ |
| Batteries | ★★★★★ |
| Starter | ★★★★★ |
| Cabin lights working | Few lights don't work |

SAFETY ITEMS

| | |
|-----------|-----------|
| Seat belt | Available |
| Horn | Working |

New/Excellent
★★★★★

Very good
★★★★★

Good
★★★★★

Fair
★★★★★

Poor
★★★★★

