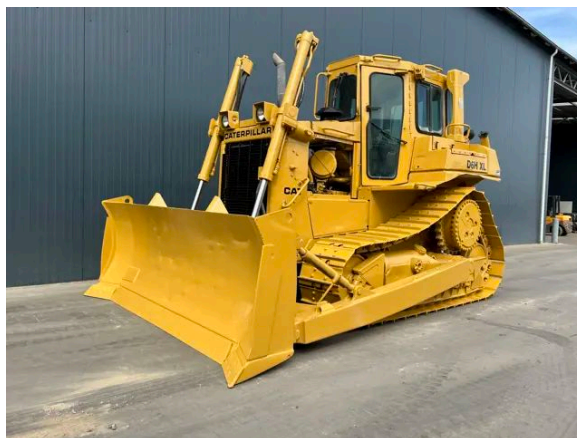


CATERPILLAR D6H XL

Description

Caterpillar D6H XL, Engine brand Caterpillar , 3306, 123 kW, Erops cabin, Straight tilt blade, Width of the blade 3.22m, Differential steering, Ripper valve, Width of the pads 560mm, Draw bar, New ripper available, ask for quotation, In good and very clean condition.



Year	1986
Hours	9036
Weight	20.000 kg
Serial number	7PC00443
Reference	208513

[Download photos](#)


CONTACT US:
SALES@SMITMA.COM
+31(0)773999840

New/Excellent
★★★★★

Very good
★★★★☆

Good
★★★☆☆

Fair
★★★☆☆

Poor
★★★☆☆

INSPECTION REPORT

FEATURES

Engine brand	Caterpillar
Engine model	3306
Engine power in kW	123 kW
Erops cabin	✓
Blade	Straight tilt blade
Width of the blade	3.22m
Steering	Differential steering
Ripper or valve	Ripper valve
Width of the pads	560mm
Draw bar	✓
New ripper available, ask for quotation	✓
Overall condition	In good and very clean condition.

DOCUMENTS

Parts book	✓
Operation manual	✓

GENERAL APPEARANCE

Serial number plate checked	Yes
Paint	★★★★★
Decals	★★★★★
Bonnet	★★★★★
Engine cover doors	★☆☆☆☆
Chassis	★★★★★
Grab irons	★★★★★
Cabin	★★★★★
Belly plate	★★★★★
Pre-cleaner bowl	★★★★★

ENGINE DETAILS AND CONDITION

Engine number	13Z10634
Arrangement number	7W4157
Air cleaner	Clean
Anti-freeze level °C	-38°C
Diesel anti-freeze added	Yes

Diesel level ok	Yes
Cooling liquid level ok	Yes
Engine oil level ok	Yes
Exhaust manifold	★★★★★★
Muffler	★★★★★★
Exhaust stack	★★★★★★
Engine supports	★★★☆☆
Hoses	★★★★★★
Good cold start	Yes
Engine power	★★★★★★
Blow by	★★★★★★
Knocking	No
Compression in the radiator	No
Water in the oil	No
Oil in the water	No
Smoke	Normal
Engine leaks	No
Belts and pulleys	★★★★★★
Fan	★★★★★★
Radiator	★★★★★★

UNDERCARRIAGE LEFT IN LIFE IN %

Overall condition	60%
Chains	60%
Bushings	40%
Sprockets	90%
Idlers	70%
Bottom rollers	40%
Track pads	40%

OPERATOR STATION

Hourmeter	Working
Heater	Working
Gauges	Few don't work
Switches	★★★★★★
Warning	No Warnings Available
Cabin glass	Not broken
Windshield wipers	Few don't work
Interior lights	Working

Cabin floor	★★★★★
Interior roof	★★★★★
Seat	★★★★★

STEERING

Steering operating condition	★★★★★
------------------------------	-------

FRAME AND BLADE

Moldboard skin	★★★★★
Cutting edge	★★★★★
Play dozer frame	★★★★★
Play blade pin	★★★★★
Play push arms	★★★★★
Play lift cylinder	★★★★★
Lift cylinders leaking	No
Play tilt cylinder	★★★★★
Tilt cylinder leaking	No
Play equaliser bar	★★★★★

HYDRAULICS

Hydraulic oil level ok	Yes
Hydraulic lines and fittings	★★★★★
Hydraulic tank/sight glass and cap	★★★★★
Hydraulic valves leaking	No
Noise hydraulic pump normal	Yes
Operating condition hydraulics	★★★★★

BRAKE

Service brake operation	★★★★★
Parking brake operation	★★★★★

DRIVE TRAIN/TRANSMISSION

Transmission fully operational in all gears forward and reverse	Yes
Transmission oil level ok	Yes
Transmission noisy	No
Oil level left final drive ok	Yes
Oil level right final drive ok	Yes
Drive chain leaks	No

ELECTRICAL, STARTING AND CHARGING SYSTEM

Alternator functioning	Yes
Wiring	★★★★★★
Batteries	★★★★★★
Starter	★★★★★★
Cabin lights working	Yes

SAFETY ITEMS

Backup alarm	Working
Seat belt	Available
Horn	Working

New/Excellent



Very good



Good



Fair



Poor



Copyright Smilma BV

