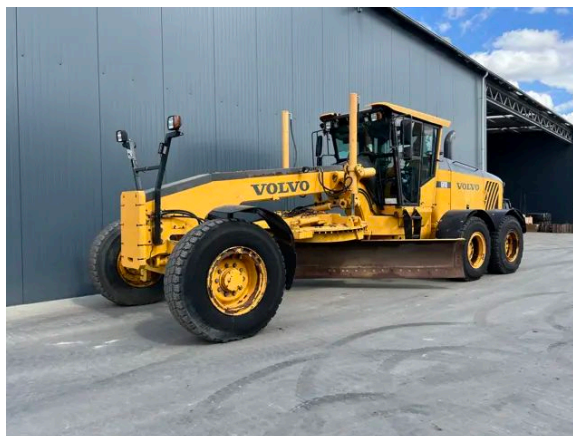


VOLVO G970

Description

Volvo G970, Engine and model Volvo D9B, 191 kW, EPA, Air conditioning, 17.5R25, 6x4, Auto shift, Hydraulic tip control, Width of the center blade 4.27m, Backup camera, Differential unlock, AM/FM Radio, Beacon, New ripper and front blade available, ask for quotation, In very good and clean condition.



Year	2014
Hours	9560
Weight	20000 kg
Serial number	VCE0G970T0S530056
Reference	205707

[Download photos](#)


CONTACT US:
SALES@SMITMA.COM
+31(0)773999840

New/Excellent
★★★★★

Very good
★★★★☆

Good
★★★☆☆

Fair
★★★☆☆

Poor
★★★☆☆

INSPECTION REPORT

FEATURES

Engine and model	Volvo D9B
Engine power in kW	191 kW
EPA	EPA
Hydraulic tip control	✓
Width of the center blade	4.27m
Beacon	✓
Overall condition	In very good and clean condition.

GENERAL APPEARANCE

Stamped serial number checked	Yes
Serial number plate checked	Yes
Paint	★ ★ ★ ★ ★
Decals	★ ★ ★ ★ ★
Bonnet	★ ★ ★ ★ ★
Engine cover doors	★ ★ ★ ★ ★
Radiator grill	★ ★ ★ ★ ★
Steps/ladders	★ ★ ★ ★ ★
Grab irons	★ ★ ★ ★ ★
Cabin	★ ★ ★ ★ ★
Transmission guard	★ ★ ★ ★ ★
Pre-cleaner bowl	★ ★ ★ ★ ★
Cracks or welds	No

ENGINE DETAILS AND CONDITION

Engine number	190403
EPA sticker available	Yes
Air cleaner	Clean
Anti-freeze level °C	-23°C
Diesel anti-freeze added	Yes
Diesel level ok	Yes
Cooling liquid level ok	Yes
Engine oil level ok	Yes
Exhaust manifold	★ ★ ★ ★ ★
Muffler	★ ★ ★ ★ ★
Exhaust stack	★ ★ ★ ★ ★

Engine supports	★★★★★
Hoses	★★★★★
Good cold start	Yes
Engine power	★★★★★
Blow by	★★★★★
Knocking	No
Compression in the radiator	No
Water in the oil	No
Oil in the water	No
Smoke	Normal
Engine leaks	No
Belts and pulleys	★★★★★
Fan	★★★★★
Radiator	★★★★★

OPERATOR STATION

Hourmeter	Working
Air conditioning	Not Working
Heater	Working
Gauges	Few don't work
Switches	★★★★★
Warning	No Warnings Available
Mirrors	Small Crack, no need to repair
Cabin glass	Not broken
Display	★★★★★
Windshield wipers	Working
Interior lights	Working
Cabin floor	★★★★★
Interior roof	★★★★★
Seat	★★★★★
Steering column	★★★★★

STEERING

Articulate cylinder leaking	No
Play articulate cylinder	★★★★★
Play articulating point	★★★★★
Wheel lean cylinder leaking	No
Play wheel lean cylinder	★★★★★
Steering cylinders leaking	No

Play steering cylinders	★★★★★
Play king pin front axle	★★★★★
Steering frame	★★★★★
Steering pump	★★★★★
Steering operating condition	★★★★★

BLADE

Circle A frame	★★★★★
Play circle A frame	★★★★★
Circle frame	★★★★★
Play circle frame	★★★★★
Cutting edge	★★★★★
Ring gear	★★★★★
Moldboard skin	★★★★★

HYDRAULICS

Hydraulic oil level ok	Yes
Hydraulic lines and fittings	★★★★★
Hydraulic tank/sight glass and cap	★★★★★
Play lift cylinder	★★★★★
Lift cylinders leaking	No
Play side shift cylinder	★★★★★
Side shift cylinder leaking	No
Play circle shift cylinder	★★★★★
Circle shift cylinder leaking	No
Play tip cylinder	★★★★★
Tip cylinder leaking	No
Hydraulic valves leaking	No
Circle drive leaking	No
Operating condition hydraulics	★★★★★
Noise hydraulic pump normal	Yes

BRAKE

Brakelines	★★★★★
Service brake operation	★★★★★
Parking brake operation	★★★★★
Compressor	★★★★★
Brake pedal	★★★★★

TRANSMISSION

Transmission controls	★★★★★★
Transmission noisy	No
Leaks	No
Transmission oil level ok	Yes
Transmission fully operational in all gears forward and reverse	Yes

DRIVE CHAIN/TANDEMS

Differential lock/unlock working	Yes
Left tandem leaking	No
Left tandem oil level ok	Yes
Right tandem leaking	No
Right tandem oil level ok	Yes
Wheel bolts and rims	★★★★★★

ELECTRICAL, STARTING AND CHARGING SYSTEM

Alternator functioning	Yes
Wiring	★★★★★★
Batteries	★★★★★★
Starter	★★★★★★
Head lights working	Yes
Tail lights working	Yes
Signal lights working	Yes
Additional work lights working	Yes

SAFETY ITEMS

Backup alarm	Working
Backup camera	Not Working
Seat belt	Available
Horn	Working
Parking Brake	Working
Beacon	Working

TYRES

FRONT LEFT TYRES	
Tread dept in mm	6mm
Percentage life remaining	20%
MIDDLE LEFT TYRES	

Tread dept in mm	12mm
------------------	------

Percentage life remaining	50%
---------------------------	-----

REAR LEFT TYRES

Tread dept in mm	10mm
------------------	------

Percentage life remaining	40%
---------------------------	-----

REAR RIGHT TYRES

Tread dept in mm	1mm
------------------	-----

Percentage life remaining	10%
---------------------------	-----

MIDDLE RIGHT TYRES

Tread dept in mm	14mm
------------------	------

Percentage life remaining	60%
---------------------------	-----

FRONT RIGHT TYRES

Tread dept in mm	4mm
------------------	-----

Percentage life remaining	20%
---------------------------	-----

New/Excellent
★★★★★

Very good
★★★★☆

Good
★★★☆☆

Fair
★★★☆☆

Poor
★★★☆☆

