



530 E

WHEEL LOADER

- **Net Horsepower**
195 hp (145 kW)
- **Bucket Capacity**
3.7 yd³ to 5.9 yd³
(2.8 m³ to 4.5 m³)
- **Operating Weight**
36,376 lb (16 500 kg)



530 E

WHEEL LOADER

- Hydrostatic steering system
- Limited slip differentials
- Single lever control
- Transmission with electronic control module



ENGINE

* Make and model KOMATSU S6D114E-1
 Type 4-cycle diesel, turbocharged, direct start, direct injection

** Gross Horsepower @ 2200 rpm 205 hp (153 kW)

*** Net Flywheel power @ 2200 rpm 195 hp (145 kW)

Maximum torque @ 1500 rpm 636 lb. ft. (862 Nm)

Number of cylinders 6

Displacement 504.5 in³ (8.3 l)

Bore and stroke 4.49" x 5.32" (114 x 135 mm)

Lubrication gear pump driven force lubrication with full flow filters

Electrical system 24 V

Air cleaner two stage, dry type with primary and safety element and service indicator

* Meets current EPA emission regulations
 ** Output for complete engine operating under SAE J1995 conditions
 *** Output of standard engine complete with fan, air cleaner, muffler, alternator (not charging), water pump, lubricating oil pump, and fuel pump, per SAE J1349.

TORQUE CONVERTER

Single stage, single phase type, 3.06 to 1 stall ratio.

TRANSMISSION

Powershift, 4-speed countershaft transmission working with electronic control module. This system provides smooth shifting and long life.

Gear	Forward		Reverse	
	mph (km/h)		mph (km/h)	
1 st	4.9	(7.9)	4.9	(7.9)
2 nd	8.0	(12.9)	8.0	(12.9)
3 rd	15.3	(24.6)	15.3	(24.6)
4 th	22.4	(36.0)	-	

AXLES

Heavy-duty type with inboard planetary final drives. Four wheel drive. Front axle fixed, rear axle oscillates a total of 24°. Vertical wheel travel of 17.2" (436 mm). Limited slip differentials.

STEERING

Articulated frame. Load-sensing hydrostatic steering provides smooth, responsive steering at any engine speed.

Articulation right or left 40°

Turning radius outside of tires 192.3" (5.85 m)

LOADER LINKAGE

Z-bar loader linkage with lubrication fittings.

BRAKES

Service – Four wheel, hydraulic disc brakes, standard. Outboard mounted, wet multidisc with separate axle by axle operation and warning indicator light and buzzer.

Parking – Dry disc, hand operated, mounted at transmission.

HYDRAULIC SYSTEM

Raise boom 6.9 sec. Lower boom 3.3 sec.
 Dump bucket in 2.1 sec.

Reservoir: Closed with pressure control 30 psi (0.21 MPa) and vacuum relief. Sight gauge and one 10-micron spin-on type filter.

Pump: three multiple vane cartridges, driven from accessory drive. Main Hyd.: Output at 2400 rpm and 100 psi (0.7 MPa) 72 gal/min (277 l/min).

Valve: Low effort, two spool with relief valve.
 Relief valve pressure 3000 psi (20.7 MPa).
 Cylinders (double acting) – hardened chrome plated piston rods.

Boom – Bore and Stroke (2) 5.9" x 27.7" (150 x 703 mm)
 Bucket – Bore and Stroke (1) 7.1" x 19.8" (180 x 504 mm)
 Steering – Bore and Stroke (2) 3.5" x 14.2" (90 x 360 mm)

HYDRAULIC CONTROLS

Boom positions: Raise, hold, down pressure, float.
 Bucket positions: Rollback, hold, dump.

REFILL CAPACITIES

	US gal	(Liter)
Cooling system	9.0	(34)
Crankcase	5.0	(19)
Transmission system	5.8	(22)
Differential & final drive, each	10.0	(38)
Hydraulic system	43.6	(165)
Fuel tank	79.3	(300)

INSTRUMENTATION

Gauges: engine oil temp., engine oil pressure, transmission oil temp., fuel level, speedometer, tachometer.
 Warning indicators for each monitored system.
 Transmission Information Center: drive direction, gear, diagnostic codes
 Loader Information Center: eight main values like temperatures, hours, voltage and pressure.

DRESSTA 530E

Wheel Loader
is an innovative machine designed with features and specifications to compete with any machine in its class. Hydrostatic steering system, limited slip differentials, integrated torque converter and electronically controlled transmission, improved serviceability and reduced noise level help to meet high customer expectations.



The wide-open, rear mainframe mounted cab allows exceptional visibility. The operator's compartment features a wrap-around tinted windshield which improves operator's peripheral view.



Electronic Monitoring System assists the operator with maintenance decisions and improves machine availability. Tilt and telescopic steering column makes operation more comfortable.

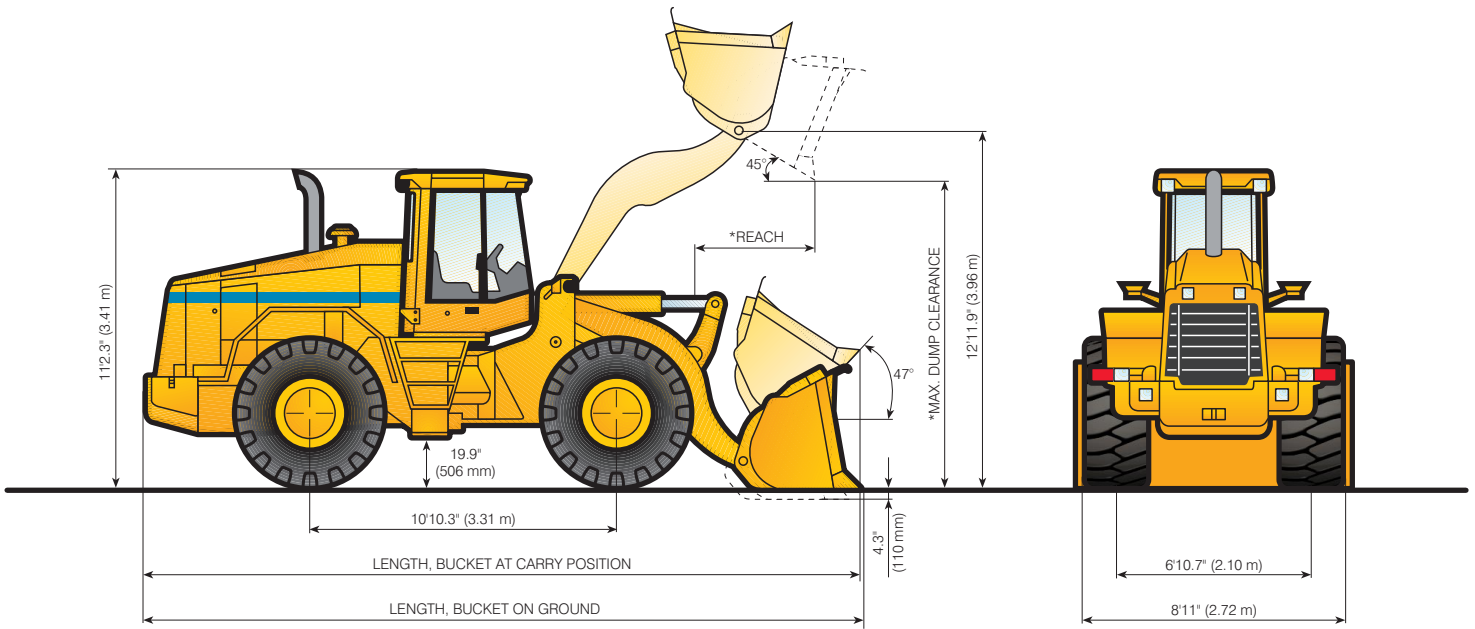
Transmission directional and speed shifts are controlled by a single lever for easy shifting.

Optional ride control reduces operator pitching. Productivity is increased thru faster cycle times and better payload retention.



Engine side doors lift high for exceptional access to the engine for inspection and maintenance.

Working equipment is hydraulically controlled using a single pilot operated joystick with low effort actuation and kickdown button.



BUCKETS SPECIFICATION

Specification		General Purpose w/bolt-on edge				Rock	
SAE, Bucket Capacity	Rated	3.7 yd ³ (2.8 m ³)	3.9 yd ³ (3.0 m ³)	4.25 yd ³ (3.25 m ³)	4.5 yd ³ (3.45 m ³)	3.7 yd ³ (2.8 m ³)	3.9 yd ³ (3.0 m ³)
	Struck	3.15 yd ³ (2.41 m ³)	3.4 yd ³ (2.58 m ³)	3.7 yd ³ (2.8 m ³)	3.88 yd ³ (2.97 m ³)	3.15 yd ³ (2.41 m ³)	3.4 yd ³ (2.58 m ³)
Bucket Width		9'10" (3.0 m)	9'7" (2.91 m)	9'10" (3.0 m)	9'10" (3.0 m)	9'10" (3.0 m)	9'10" (3.0 m)
* Dump Clearance, Max. Height and 45° Dump Angle		9'10" (3.0 m)	9'10" (3.0 m)	9'7" (2.92 m)	9'7" (2.92 m)	9'6" (2.89 m)	9'4" (2.84 m)
* Reach @ Max. Height and 45° Dump Angle		3'10.5" (1.18 m)	3'10.5" (1.18 m)	4'1" (1.25 m)	4'1" (1.25 m)	4'3" (1.29 m)	4'4" (1.33 m)
Overall Length, Bucket @ Carry		26'0" (7.93 m)	25'10" (7.88 m)	26'3" (8.0 m)	26'3" (8.0 m)	26'5" (8.04 m)	26'6" (8.08 m)
Overall Length, Bucket on Ground		26'2.6" (7.99 m)	25'11.8" (7.92 m)	26'7" (8.09 m)	26'7" (8.09 m)	26'9" (8.15 m)	26'11" (8.21 m)
Turning Radius outside corner of bucket @ SAE Carry		21'5.5" (6.54 m)	21'3" (6.48 m)	21'6.7" (6.57 m)	21'6.7" (6.57 m)	21'7.4" (6.59 m)	21'7.8" (6.60 m)
Breakout Force		42,847 lb (190.6 kN)	42,847 lb (190.6 kN)	39,632 lb (176.3 kN)	39,632 lb (176.3 kN)	38,126 lb (169.6 kN)	36,575 lb (162.7 kN)
** Static Tipping Load	Straight	30,247 lb (13 720 kg)	30,159 lb (13 680 kg)	29,983 lb (13 600 kg)	29,894 lb (13 560 kg)	29,916 lb (13 570 kg)	29,828 lb (13 530 kg)
	Full Turn	25,441 lb (11 540 kg)	25,353 lb (11 500 kg)	25,177 lb (11 420 kg)	25,088 lb (11 380 kg)	25,110 lb (11 390 kg)	25,022 lb (11 350 kg)
Operating Weight		36,343 lb (16 485 kg)	36,376 lb (16 500 kg)	36,508 lb (16 560 kg)	36,596 lb (16 600 kg)	36,685 lb (16 640 kg)	36,442 lb (16 530 kg)

Specification		Excavating w/teeth				Multi-purpose	Coal and Light Material
SAE, Bucket Capacity	Rated	3.7 yd ³ (2.8 m ³)	3.9 yd ³ (3.0 m ³)	4.25 yd ³ (3.25 m ³)	4.5 yd ³ (3.45 m ³)	3.7 yd ³ (2.8 m ³)	5.9 yd ³ (4.5 m ³)
	Struck	3.15 yd ³ (2.41 m ³)	3.4 yd ³ (2.58 m ³)	3.7 yd ³ (2.8 m ³)	3.88 yd ³ (2.97 m ³)	3.15 yd ³ (2.41 m ³)	5.06 yd ³ (3.87 m ³)
Bucket Width		9'10" (3.0 m)	9'7" (2.91 m)	9'10" (3.0 m)	9'10" (3.0 m)	9'10" (3.0 m)	9'10" (3.0 m)
* Dump Clearance, Max. Height and 45° Dump Angle		9'4" (2.84 m)	9'4" (2.84 m)	9'1" (2.76 m)	9'1" (2.76 m)	98.5" (2.96 m)	8'11" (2.71 m)
* Reach @ Max. Height and 45° Dump Angle		4'5" (1.34 m)	4'5" (1.34 m)	4'8" (1.42 m)	4'8" (1.42 m)	4'0" (1.22 m)	4'11" (1.47 m)
Overall Length, Bucket @ Carry		26'6" (8.08 m)	26'4" (8.03 m)	26'9.3" (8.16 m)	26'9.3" (8.16 m)	26'1.4" (7.96 m)	27'5" (8.36 m)
Overall Length, Bucket on Ground		26'11.6" (8.22 m)	26'8.5" (8.14 m)	27'3.6" (8.32 m)	27'3.6" (8.32 m)	26'5" (8.04 m)	27'8" (8.43 m)
Turning Radius outside corner of bucket @ SAE Carry		21'7.8" (6.60 m)	21'7" (6.58 m)	21'9.4" (6.64 m)	21'9.4" (6.64 m)	21'6.3" (6.56 m)	22'0.6" (6.72 m)
Breakout Force		36,305 lb (161.5 kN)	36,305 lb (161.5 kN)	33,967 lb (151.1 kN)	33,967 lb (151.1 kN)	41,183 lb (183.2 kN)	32,371 lb (144.0 kN)
** Static Tipping Load	Straight	29,916 lb (13 570 kg)	29,828 lb (13 530 kg)	29,652 lb (13 450 kg)	29,564 lb (13 410 kg)	28,638 lb (12 990 kg)	29,299 lb (13 290 kg)
	Full Turn	25,110 lb (11 390 kg)	25,022 lb (11 350 kg)	24,846 lb (11 270 kg)	24,758 lb (11 230 kg)	23,832 lb (10 810 kg)	24,493 lb (11 110 kg)
Operating Weight		36,795 lb (16 690 kg)	36,828 lb (16 705 kg)	36,960 lb (16 765 kg)	37,042 lb (16 802 kg)	37,875 lb (17 180 kg)	37,170 lb (16 860 kg)

All dimensions, weights and performance values per SAE J732 where applicable.

* Increases or decreases according to tire size.

** Machine stability, weight and performance are affected by optional equipment.

530 E WHEEL LOADER



STANDARD EQUIPMENT

- Air cleaner, 2 stage, dry type
- Air conditioner and heater/pressurizer/defroster
- Alarm, back-up
- Alternator, 50 A
- Antifreeze, -34°F (-37°C)
- Axles, w/planetary final drives
- Batteries, (2) 12 V, 950 CCA, maintenance free
- Beacon light, rotating
- Boom, std
- Boom kickout
- Brakes; service, 4-wheel, outboard, wet multidisc; parking, dry disc type, hand operated, mounted at transmission with warning light
- Bucket leveler
- Cab, ROPS/FOPS with sound suppression, front and rear wipers and washers, plastic lining, rear view mirror, sun protection roller, open position door lock, right door as emergency exit, storage cabinet, radio provision, dome lights (2), lighter and ashtray, R. H. side folding equipment control console
- Cooling system for transmission & torque converter oil
- Counterweight 4079 lb (1850 kg) with battery box
- Differentials, limited slip
- Drawbar
- Ecology drains for hydraulics and coolant
- Engine hood, sloped
- Engine side doors, hinged, swing out type
- Fan, sucking type with guard, 2 speeds, hydraulic driven
- Fender kit, rear
- Filters: engine oil, transmission/torque converter oil, hydraulic oil
- Fire extinguisher, mounted in cab
- Fuel system water separator
- Guard, transmission
- Horn, electric, dual tone
- Instrumentation
 - Gauges: engine oil temp., engine oil pressure, transmission oil temp., fuel level, speedometer, tachometer
 - Warning indicators for each monitored system
 - Transmission information center
 - Loader information center
 - Visual sight gauge for hydraulic reservoir
 - Level dipsticks for transmission and engine oil
- Lifting eyes and tie downs
- Lights, working and traveling, 2 front, 2 rear, 2 stop/tail, turn signals
- Lights, 4 front, 2 rear, cab mounted
- Master electrical disconnect
- Mirrors, heated, R.H. and L.H. on cab
- Muffler, underhood
- Radiator guard door, hinged
- Seat, suspension type, height and tilt adjustment
- Single lever equipment control w/lock switch, transmission kick-down switch and reversing switch
- Sound suppression kit, engine compartment
- Starting, 24 V, electrical
- Steering, articulated, hydrostatic
- Steering column, adjustable height and angle
- Tires, 23.5 x 25-20PR (L-2)
- Torque converter
- Transmission, single lever electric control, 4-speed forward and 3 reverse, full power soft shift, countershaft type, clutch disconnect
- Valve, 2-spool
- Vandalism protection

OPTIONAL ATTACHMENTS

- Auxiliary steering, ground driven
- Bucket, general purpose, 3.5 yd³ (2.7 m³) for tool carrier
 - bucket teeth, set of 10, bolt-on adapters
 - cutting edge, bolt-on
- Bucket, multi-purpose
 - bucket teeth, set of 10, bolt-on adapters
- Buckets, general purpose, w/bolt-on edge
- Buckets, excavating w/teeth, bolt-on tooth adapters
- Buckets, rock, spade nose
- Bucket, coal and light material, spade nose
- Bucket teeth, ESCO Super V[®] system
- Fender kit, front
- Hydraulic kit, includes 3 spool valve, piping and controls
- Pallet fork-lift attachment, for use with tool carrier
- Ride control system
- Starting aid, ether
- Tires, tubeless:
 - 23.5 x 25-20PR (L-3)
 - 23.5 x 25, XTLA, Michelin (comparable L-2)
 - 23.5 x 25, XHA, Michelin (comparable L-3)
 - 26.5 x 25-20PR (L-3)
 - 26.5 x 25-20PR (L-5)
- Tool carrier, quick coupler, includes male master, third spool valve, hydraulics and piping
- Tools, 17 or 43 items in metal box
- Tooth removal kit

Specifications subject to change without notice. Illustrations may include optional equipment and may not include all standard equipment.

DRESSTA NORTH AMERICA, LTD.

1327 BARCLAY BLVD.
BUFFALO GROVE, IL 60089
phone (847) 537 4783 fax (847) 537 2873
Toll free (877) DNA 2001
www.dresstanorthamerica.com