

ALLES **HAND IN HAND**

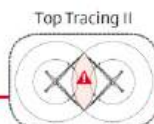
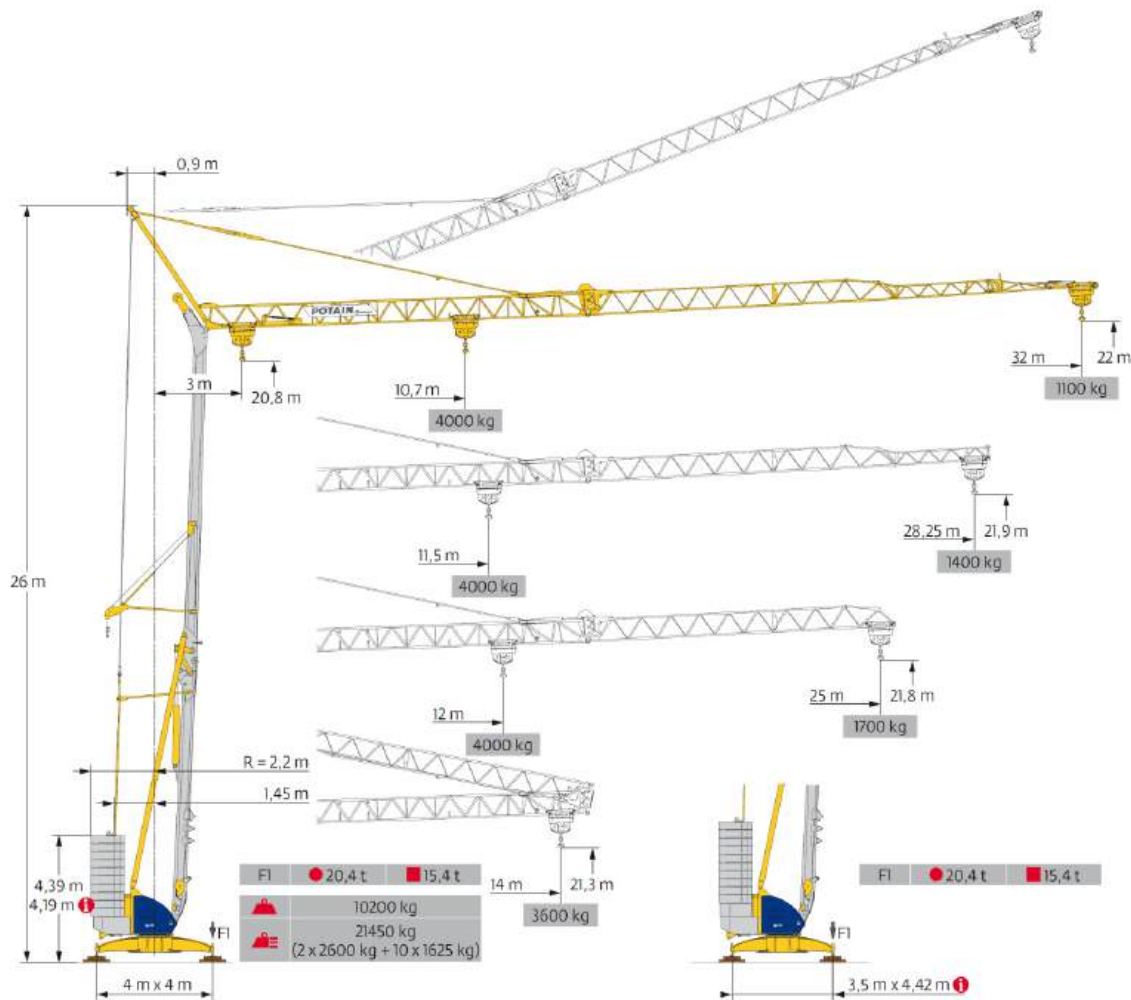
Seit  
 1968 wird  
**SERVICE**  
 bei uns groß-  
 geschrieben!

## 32m Kran, Potain IGO 36

Grove Maniowoc National Crane Potain



# Potain Igo 36

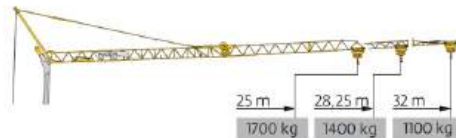


EN 14439 C25-D25  
 EN 14439 C50-D50  
 FEM 1.001-A3

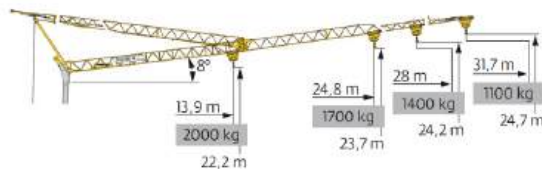
## 32m Kran, Potain IGO 36

EN 14439 C25-D25  
 EN 14439 C50-D50  
 FEM 1.00T-A3

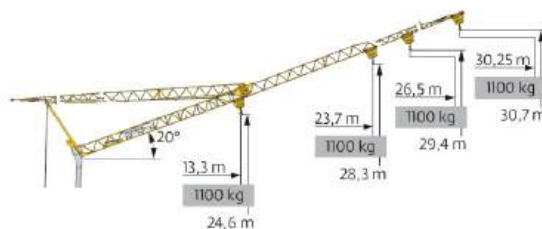
Courbes de charges / Lastkurven / Load curves / Curvas de cargas / Curve di carico  
 Curvas de carga / Кривые нагрузок



32 m	3	▶	12,87	13	14	m	10,7	11	12	13	14	15	16	17	18	18,5	19	19,5	20	22	25	27	30	32	m	
<b>FATAL</b>	<b>III</b>	<b>III</b>	4000	3950	3600	kg	4000	3870	3460	3125	2845	2610	2410	2230	2080	2000	1940	1880	1820	1615	1375	1250	1090	1000	kg	
					2000	kg										2000	1940	1880	1820	1615	1375	1250	1090	1000	kg	
					2000	kg													2000	1940	1730	1485	1350	1190	1100	kg
28,25 m	3	▶	12,87	13	14	m		11,5	12	13	14	15	16	17	18	19	20	21	22	25	27	28,25	m			
<b>FATAL</b>	<b>III</b>	<b>III</b>	4000	3950	3600	kg		4000	3790	3420	3120	2860	2640	2450	2280	2135	2000	1885	1780	1520	1375	1300	kg			
					2000	kg											2000	1885	1780	1520	1375	1300	kg			
					2000	kg												2000	1890	1620	1480	1400	kg			
25 m	3	▶	12,87	13	14	m		12	13	14	15	16	17	18	19	20	20,8	21	21,8	23	25	m				
<b>FATAL</b>	<b>III</b>	<b>III</b>	4000	3950	3600	kg		4000	3600	3280	3010	2775	2580	2400	2250	210	2000	1985	1895	1775	1600	kg				
					2000	kg												2000	1985	1895	1775	1600	kg			
					2000	kg													2000	1875	1700	kg				



32 m	3	▶	18,3	19	19,5	21	23	25	26	28	30	31,7	m
<b>FATAL</b>	<b>III</b>	<b>III</b>	2000	1910	1845	1685	1505	1355	1290	1175	1075	1000	kg
													kg
													kg
28,25 m	3	▶	19,8	20,8	21	23	25	26	28	m			
<b>FATAL</b>	<b>III</b>	<b>III</b>	2000	1890	1850	1660	1500	1425	1300	kg			
										kg			
										kg			
25 m	3	▶	20,7	21,6	23	24,8	m						
<b>FATAL</b>	<b>III</b>	<b>III</b>	2000	1895	1755	1600	kg						
							kg						
							kg						



32 m	3	▶	30,25	m
<b>FATAL</b>	<b>III</b>	<b>III</b>	1000	kg
			1100	kg
28,25 m	3	▶	26,5	m
<b>FATAL</b>	<b>III</b>	<b>III</b>	1000	kg
			1100	kg
25 m	3	▶	23,7	m
<b>FATAL</b>	<b>III</b>	<b>III</b>	1000	kg
			1100	kg

Igo 36



# 32m Kran, Potain IGO 36

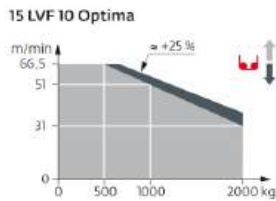
EN 14439 C25-D25  
 EN 14439 C50-D50  
 FEM 1.001-A3

Mécanismes / Triebwerke / Mechanisms / Mecanismos / Meccanismi  
 Mecanismos / Механизмы

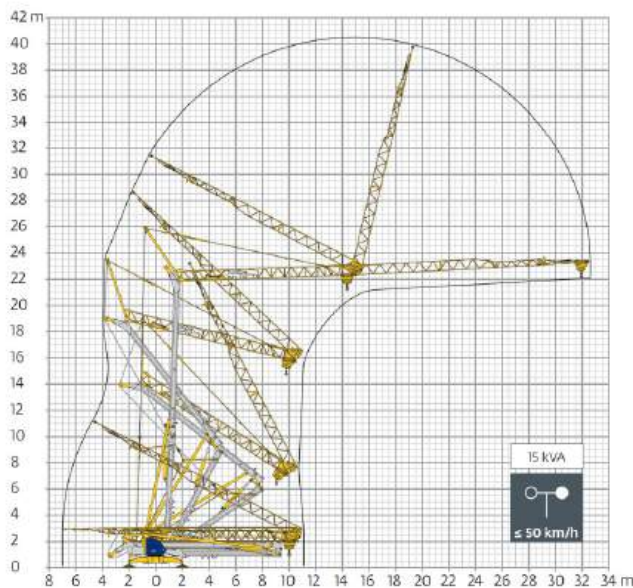
400 V - 50 Hz 480 V - 60 Hz												ch - PS hp	kw	
	15 LVF 10 Optima	m/min	3,6	18	31	51	66,5	1,8	9	15,5	25,5	33	15	11
		kg	2000	2000	2000	1000	500	4000	4000	4000	2000	1000		
	3 DVF 5	m/min	15 - 30 - 41										3	2,2
	RVF 41 Optima+	t/min U/min rpm	0 → 0,8										4	3

400 V (+10% -10%) 50 Hz / 480 V (+6% -10%) 60 Hz	15 kVA



Montage / Montage / Erection / Montaje / Montaggio  
 Montagem / Монтаж



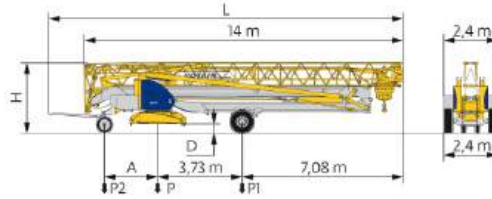
ALLES **HAND IN HAND**

Seit  
 1968 wird  
**SERVICE**  
 bei uns groß-  
 geschrieben!

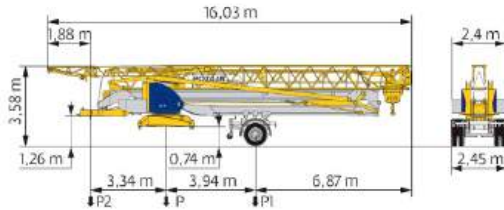
## 32m Kran, Potain IGO 36

EN 14439 C25-D25  
 EN 14439 C50-D50  
 FEM 1.001-A3

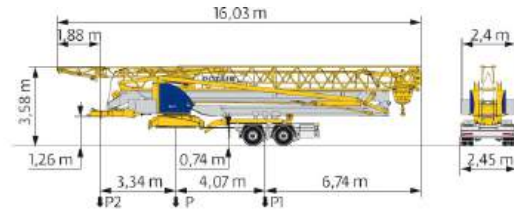
Transport / Transport / Transport / Transporte / Trasporto  
 Transporte / Транспортировка



	km/h	A (m)	D (m)	H (m)	L (m)	P (kg)	P1 (kg)	P2 (kg)
DS62/S120	10	2,35	0,36/0,21	3,2/3,05	15,48	16220	10290	5930
DJ100/S125	25	2,45	0,38/0,23	3,22/3,07	15,77	16230	10410	5820



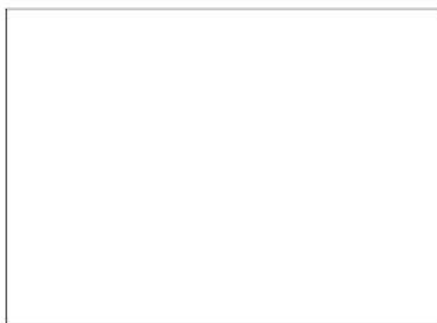
	km/h	P (kg)	P1 (kg)	P2 (kg)
SL121/J135	25	17480	11980	5500



	km/h	P (kg)	P1 (kg)	P2 (kg)
SL122/J215M	80	18555	12867	5688

	FR	DE	EN	ES	IT	PT	RU
<b>R</b>	Rayon de giration	Schwenk radius	Rear slewing radius	Radio de giro	Raggio di rotazione	Raio de rotação	Задний габарит
<b>+</b>	Nous consulter	Auf Anfrage	Consult us	Consultarnos	Consultarci	Consultarmos	Проконсультируйтесь у нас
<b>+</b>	Réactions en service	Reaktionskräfte in Betrieb	Reactions in service	Reacciones en servicio	Reazioni in servizio	Reacções em serviço	Реакция при работе
<b>+</b>	Réactions hors service	Reaktionskräfte außer Betrieb	Reactions out of service	Reacciones fuera de servicio	Reazioni fuori servizio	Reacções fora de serviço	Реакция в покое
<b>+</b>	Poids à vide, sans lest, sans trais de transport, avec flèche max. et hauteur standard.	Gewicht ohne Last, ohne Ballast, ohne Transportachsen, mit max. Ausleger und Standardhöhe	Weight without load, without ballast, without transport axles, with max jib and standard height	Peso en vacío, sin lastre, sin trenes de transporte con flecha y altura estándar	Peso a vuoto, senza zavorra, senza assali di trasporto, con braccio max. e altezza standard.	Peso em vazio, sem lastro, sem eixos de transporte com lança máxima e altura standard.	Вес без груза, без балласта, без осей для транспортировки, с максимальной вылетом стрелы и стандартной высотой
<b>+</b>	Poids total du lest	Ballast-Gesamtgewicht	Total ballast weight	Peso total del lastre	Peso totale della zavorra	Peso total de lastro	Общий вес балласта
<b>+</b>	Équipements standards	Standardausrüstungen	Standard equipment	Equipamiento de serie	Equipaggiamento standard	Equipamento de série	Стандартное оборудование
<b>+</b>	Équipements optionnels	Sonderausrüstungen	Options	Equipamiento opcional	Equipaggiamento in opzione	Equipamento opcional	Дополнительное оборудование (опции)
<b>+</b>	Lavage	Heben	Hoisting	Elevación	Sollevamento	Elevação	Подъем
<b>+</b>	Distribution	Katafahren	Trolleying	Distribución	Distribuzione	Distribuição	Перемещение по стреле
<b>+</b>	Orientation	Schwenken	Slewing	Orientación	Rotazione	Rotação	Поверот
<b>+</b>	Puissance requise	Erforderliche Leistung	Required power	Potencia Necesaria	Potenza richiesta	Potência Necessária	Потребляемая мощность

**⚠** Document commercial non contractuel. Pour toute information technique se référer à la notice correspondante. **U**nerbindliches Vertriebsdokument. Für technische Informationen, siehe die entsprechenden Anweisungen. **T**his commercial document is not legally binding. For any technical information, please refer to the corresponding instructions. **D**ocumento comercial non contrattuale. Per tutte le informazioni tecniche, fare riferimento al catalogo istruzioni. **D**ocumento commerciale non vincolante, per tutte le informazioni tecniche, consultare il rispettivo istruzioni. **D**ocumento comercial não contractual. Para qualquer informação técnica complementar consultar as respectivas instruções. **Э**тот коммерческий документ не является юридически обязательным. Для получения технической информации, см. соответствующие инструкции.



www.manitowoc.com

**Americas**  
**Manitowoc, Wisconsin, USA**  
 Tel: +1 920 684 6621  
 Fax: +1 920 683 6277

**Europe, Middle East, Africa**  
**Ecully, France**  
 Tel: +33 (0)4 72 18 20 20  
 Fax: +33 (0)4 72 18 20 00

**Shady Grove, Pennsylvania, USA**  
 Tel: +1 717 597 8121  
 Fax: +1 717 597 4062

**China**  
**Shanghai, China**  
 Tel: +86 21 6457 0066  
 Fax: +86 21 6457 4955

**Greater Asia-Pacific**  
**Singapore**  
 Tel: +65 6264 1188  
 Fax: +65 6862 4040

Ref. Igo 36 2003 418 - 11

Igo 36