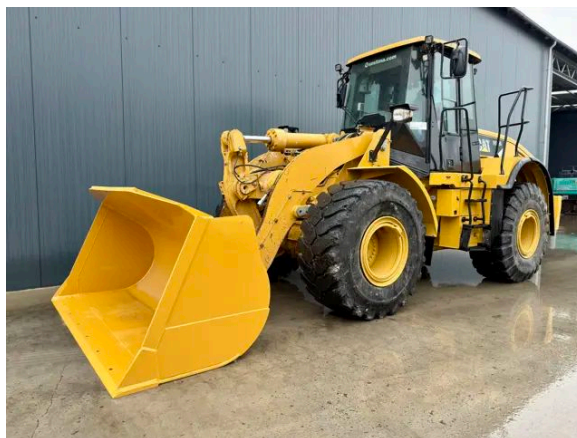


## CATERPILLAR 950H - FULL STEERING - 3RD VALVE

### Description

Caterpillar 950H, Engine and model Caterpillar C7, 146 kW, CE, Air conditioning, Erops cabin, 23.5R25 Michelin, GP bucket with bolt on edge, Width of the bucket 2.88m, 3rd valve, Complete steering wheel, Ride control, Autoshift, Backup camera, Backup alarm, Cental lubrication available but not tested, Beacon, Hours certified by Caterpillar, In good and clean condition.



Year	2010
Hours	10098
Weight	18.500 kg
Serial number	CAT0950HEN1A04489
Reference	208557

[Download photos](#)


**CONTACT US:**  
**SALES@SMITMA.COM**  
**+31(0)773999840**

New/Excellent  
★★★★★

Very good  
★★★★☆

Good  
★★★☆☆

Fair  
★★★☆☆

Poor  
★★★☆☆

# INSPECTION REPORT

## FEATURES

Engine and model	Caterpillar C7
Engine power	146 kW
CE	✓
Erops cabin	✓
Tyre size	23.5R25 Michelin
Bucket	GP bucket with bolt on edge
Width of the bucket	2.88m
Steering	Complete steering wheel
Ride control	✓
Autoshift	✓
Central lubrication	Cental lubrication available but not tested
Beacon	✓
Hours	Hours certified by Caterpillar
Overall condition	In good and clean condition.

## DOCUMENTS

Parts book	✓
Operation manual	✓

## GENERAL APPEARANCE

Stamped serial number checked	Yes
Serial number plate checked	Yes
Paint	★★★★☆☆
Decals	★★★★☆☆
Bonnet	★★★★☆☆
Chassis	★★★★☆☆
Steps/ladders	★★★★☆☆
Grab irons	★★★★☆☆
Cabin	★★★★☆☆
Pre-cleaner bowl	★★★★☆☆
Toolbox	★★★★☆☆

## ENGINE DETAILS AND CONDITION

Engine number	KHX27829
Air cleaner	New

Anti-freeze level °C	-44°C
Diesel anti-freeze added	Yes
Diesel level ok	Yes
Cooling liquid level ok	Yes
Engine oil level ok	Yes
Exhaust manifold	★★★★☆☆
Muffler	★★★★☆☆
Exhaust stack	★★★★☆☆
Engine supports	★★★★☆☆
Hoses	★★★★☆☆
Good cold start	Yes
Engine power	★★★★☆☆
Blow by	★★★★☆☆
Knocking	No
Compression in the radiator	No
Water in the oil	No
Oil in the water	No
Smoke	Normal
Engine leaks	No
Belts and pulleys	★★★★☆☆
Fan	★★★★☆☆
Radiator	★★★★☆☆

## OPERATOR STATION

Hourmeter	Working, hours certified by Caterpillar
Air conditioning	Not working
Heater	Working
Gauges	Few don't work
Switches	★★★★☆☆
Display	★★★★☆☆
Warning	No warnings available
Mirrors	Small crack no need to repair
Cabin glass	Small crack no need to repair
Windshield wipers	Working
Interior lights	Working
Cabin floor	★★★★☆☆
Interior roof	★★★★☆☆
Seat	★★★★☆☆
Door lock	Working

## BUCKET

Overall condition of the bucket	★★★★★
Bottom	★★★★★
Sides	★★★★★

## FRAME

Play articulation point	★★★★★★
Note: Little play steering cylinders	
Play loading frame	★★★★★★
Play bucket pins	★★★★★★
Crack or welds	No

## HYDRAULICS

Hydraulic oil level ok	Yes
Hydraulic lines and fittings	★★★★★★
Hydraulic tank/sight glass and cap	★★★★★★
Hydraulic valves leaking	No
Noise hydraulic pump normal	Yes
Operating condition hydraulics	★★★★★★

## BRAKE

Service brake operation	★★★★★★
Parking brake operation	★★★★★★
Compressor	★★★★★★

## DRIVE TRAIN/TRANSMISSION

Transmission fully operational in all gears forward and reverse	Yes
Transmission oil level ok	Yes
Transmission noisy	No
Oil level front axle ok	Yes
Oil level rear axle ok	Yes

## ELECTRICAL, STARTING AND CHARGING SYSTEM

Alternator functioning	Yes
Wiring	★★★★★★
Batteries	★★★★★★
Starter	★★★★★★
Cabin lights working	Yes

Tail lights working	Yes
Additional work lights working	Yes

## SAFETY ITEMS

Backup alarm	Working
Seat belt	Available
Horn	Not Working
Beacon	Not working

## TYRES

### FRONT LEFT

Tread dept in mm	33mm
------------------	------

### REAR LEFT

Tread dept in mm	33mm
------------------	------

### REAR RIGHT

Tread dept in mm	32mm
------------------	------

### FRONT RIGHT

Tread dept in mm	38mm
------------------	------

New/Excellent ★★★★★	Very good ★★★★☆	Good ★★★☆☆	Fair ★★★☆☆	Poor ★☆☆☆☆
------------------------	--------------------	---------------	---------------	---------------

Copyright Smitma BV

