

The Valla V80R pick & carry crane is one of our new generation mini cranes that are operated by wireless remote control. This gives the operator complete freedom to choose the optimum location for controlling a lift, which improves teamwork, safety and productivity.



Wireless Remote Control

8,000kg Max Lifting Capacity



CPCS - A66 Compact Crane (B)



Technical specification (basic machine)

Max Lifting Capacity	8,000kg
Max Working Height	9.0m
Max Working Radius	5.5m
Capacity @ Max Height	2,000kg
Capacity @ Max Radius	1,300kg
Power Source	Batteries
Height	1999mm
Length	3190mm
Width	1400mm
Total Machine Weight	8,400kg

Optional Accessories

- Hydraulic winch & hook block
- Extendable wheelbase
- Forks
- Stabiliser crossbar
- Fly jib

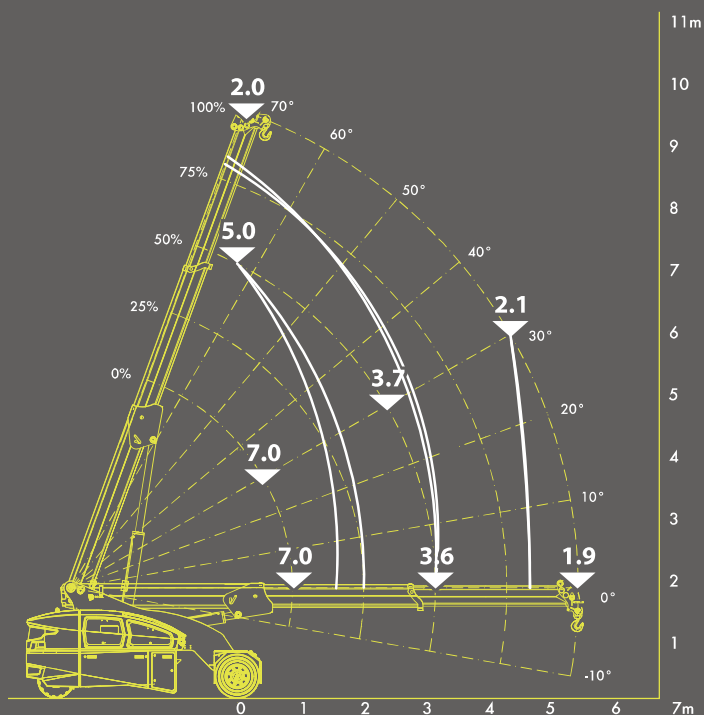


Optional fork attachment, fly jib and stabiliser crossbar

Product specifications are subject to change without prior notice or obligation. The photographs and/or drawings in this document are for illustrative purposes only

Extended chassis

- Max. lifting capacity 7,000kg
- Max. working height 9.0m
- Max. working radius 5.5m
- Capacity @ max. height 2,000kg
- Capacity @ max. radius 1,900kg



Extended chassis and stabiliser crossbar

- Max. lifting capacity 8,000kg
- Max. working height 9.0m
- Max. working radius 5.5m
- Capacity @ max. height 2,500kg
- Capacity @ max. radius 1,900kg

