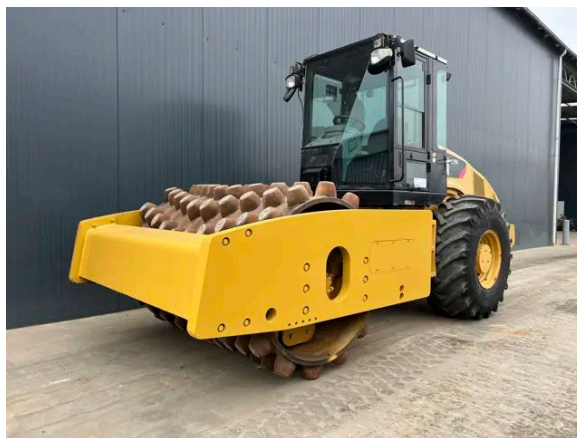


## CATERPILLAR CP74

### Description

Caterpillar CP74, Caterpillar, C6.6, 116.5 kW, CE, Erops cabin, 23.1-26, Air conditioning, Hours certified by Caterpillar, In very good and very clean condition.



Year	2011
Hours	4834
Weight	15.600 kg
Serial number	CAT0CP74JP8F00118
Reference	205742

[Download photos](#)


CONTACT US:  
SALES@SMITMA.COM  
+31(0)773999840

New/Excellent



Very good



Good



Fair



Poor



# INSPECTION REPORT

## FEATURES

Engine brand	Caterpillar
Engine model	C6.6
Engine power in kW	116.5 kW
CE	✓
Tyre size	23.1-26
Overall condition	In very good and very clean condition.

## DOCUMENTS

Parts book	✓
Operation manual	✓

## GENERAL APPEARANCE

Stamped serial number checked	Yes
Serial number plate checked	Yes
Paint	★★★★☆☆
Decals	★★★★☆☆
Bonnet	★★★★☆☆
Chassis	★★★★☆☆
Steps/ladders	★★★★☆☆
Cabin	★★★★☆☆

## ENGINE DETAILS AND CONDITION

Engine number	C6E35206
Air cleaner	New
Anti-freeze level °C	-26°C
Diesel anti-freeze added	Yes
Diesel level ok	Yes
Cooling liquid level ok	Yes
Engine oil level ok	Yes
Exhaust manifold	★★★★☆☆
Muffler	★★★★☆☆
Exhaust stack	★★★★☆☆
Hoses	★★★★☆☆
Good cold start	Yes
Engine power	★★★★☆☆

Blow by	★★★★★
Knocking	No
Compression in the radiator	No
Water in the oil	No
Oil in the water	No
Smoke	Normal
Engine leaks	No
Belts and pulleys	★★★★
Fan	★★★★★
Radiator	★★★★★

## SAFETY ITEMS

Seat belt	Available
Parking brake	Working

## OPERATOR STATION

Hourmeter	Working, hours certified by Caterpillar
Air conditioning	Not Working
Heater	Not Working
Gauges	Few don't work
Switches	★★★★
Warnings	No warnings available
Mirrors	Not broken
Cabin glass	Small crack, no need to repair
Windshield wipers	Not Working
Cabin floor	★★★★★
Interior roof	★★★★
Seat	★★★★★
Door lock	Working

## DRUM

Vibratory system	★★★★★
Drum surface	★★★★★
Rubber mounts	★★★★
Drum scrapers	★★★★★
Leakages	No
Drum oil level ok	Yes
Vibration	High and low vibration frequency working

## STEERING

Articulate cylinder leaking	No
Play articulate cylinder	★★★★★
Play articulating point	★★★★★

## HYDRAULICS

Hydraulic oil level ok	Yes
Hydraulic lines and fittings	★★★★★
Hydraulic tank/sight glass and cap	★★★★★
Noise hydraulic pump normal	Yes
Operating condition hydraulics	★★★★★

## DRIVE CHAIN

Rear axle leakages	No
Wheel bolts and rims	★★★★★
Travel motors	★★★★★
Oil level left final drive ok	Yes
Left final drive leaking	No
Oil level right final drive ok	Yes
Right final drive leaking	No

## ELECTRICAL, STARTING AND CHARGING SYSTEM

Alternator functioning	Yes
Wiring	★★★★★
Batteries	★★★★★
Starter	★★★★★
Cabin lights working	Yes
Additional work lights working	Few lights don't work

## TYRES

REAR LEFT TYRES	
Tread dept in mm	31mm
REAR RIGHT TYRES	
Tread dept in mm	21mm

New/Excellent ★★★★★	Very good ★★★★☆	Good ★★★☆☆	Fair ★★★☆☆	Poor ★☆☆☆☆
------------------------	--------------------	---------------	---------------	---------------

Copyright Smilma BV

