

Technical Description Hydraulic Excavator

A 314
Litronic®

**NEU · NEW
NOUVEAU**

Operating Weight 13,4 – 15,2 t
Engine Output 80 kW (109 HP)
Bucket Capacity 0,14 – 0,75 m³



LIEBHERR

The Better Machine.



Engine

Rating per ISO 9249	80 kW (109 HP) at 1800 RPM
Model	Deutz BF4M1013EC
Type	4 cylinder in-line
Bore/stroke	108/130 mm
Displacement	4,8 l
Engine operation	4-stroke diesel direct injection turbo-charged and after-cooler in accordance with EC-guidelines
Exhaust emissions	
Cooling system	water-cooled with stepless, thermostatic and controlled fan
Air cleaner	dry-type air cleaner with pre-cleaner and automatic 95% dust discharge (TopAir); main and safety elements
Fuel tank	290 l
Engine idling	sensor controlled
Electrical system	
Voltage	24 V
Batteries	2 x 92 Ah/12 V
Alternator	24 V/55 A



Hydraulic System

Hydraulic pump	Liebherr, variable displacement, swashplate pump
Max. flow	230 l/min
Max. hydr. pressure	350 bar
Hydraulic pump regulation and control	Liebherr-Synchron-Comfort-system (LSC) with electronic engine speed sensing regulation, pressure and flow compensation, load sensing and torque controlled swing drive priority
Hydraulic tank capacity	170 l
Hydraulic system capacity	max. 350 l
Filtration	one main return filter with integrated partial micro filtration (5 µm)
Cooling	hydraulic oil radiator with stepless, thermostatic and controlled fan
Mode selector	stepless adjustment of machine performance to match application
POWER-PLUS	for maximum digging power and heavy duty jobs (without time limit)
POWER-range	for high digging power with low fuel consumption
ECO-range	for especially economical and environmentally friendly operation
Super-Finish selector	stepless adjustment of engine output - for precision work and heavy duty jobs; actuated via left joystick; possible in each selected mode
Additional function	fixed adjustable flow rates for optional accessories



Hydraulic Controls

Power distribution	via control valve with integrated safety valves, simultaneous and independent operation of travel drive, swing drive and work
Control type	
Attachment and swing	proportional via joystick levers
Travel	proportional via foot pedal
Additional functions	via switch and/or proportional foot pedals



Swing Drive

Drive	Liebherr swashplate motor with torque control and integrated brake valve
Transmission	Liebherr compact planetary reduction gear
Swing ring	Liebherr sealed single race ball bearing swing ring, internal teeth
Swing speed	0 - 9,0 RPM
Swing torque	38 kNm
Holding brake	pedal controlled positioning brake



Operator Cab

Cab	largely dimensioned ergonomic cab resiliently mounted, sound insulated, tinted windows, front window stores overhead, door with sliding window, large roof window, sun visors
Operator seat	shock absorbing suspension, adjustable to operator's weight, 6-way adjustable seat, backward/forward seat adjusting with automatic height adjustment
Joysticks	integrated into adjustable seat consoles
Instrument panel	ergonomically arranged, anti-glare instrumentation; automatic monitoring, display, low engine oil pressure or low hydraulic oil level
Digital hour meter	visible from outside
Heating system	hot water heat exchanger to provide heated fresh air or circulated air, with additional front window air vents, operating unit in right console
Noise emission (86/662/EEC)	L _{PA} (inside cab) = 72 dB(A) L _{WA} (surround noise) = 99 dB(A)
Sound level in correspondence with "Blue Angel" guidelines.	



Undercarriage

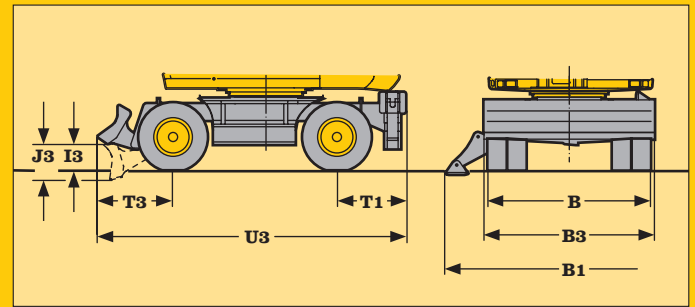
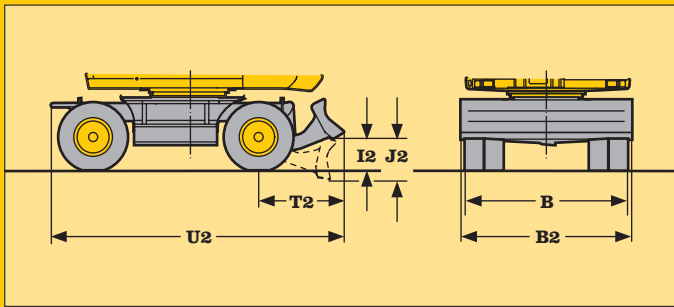
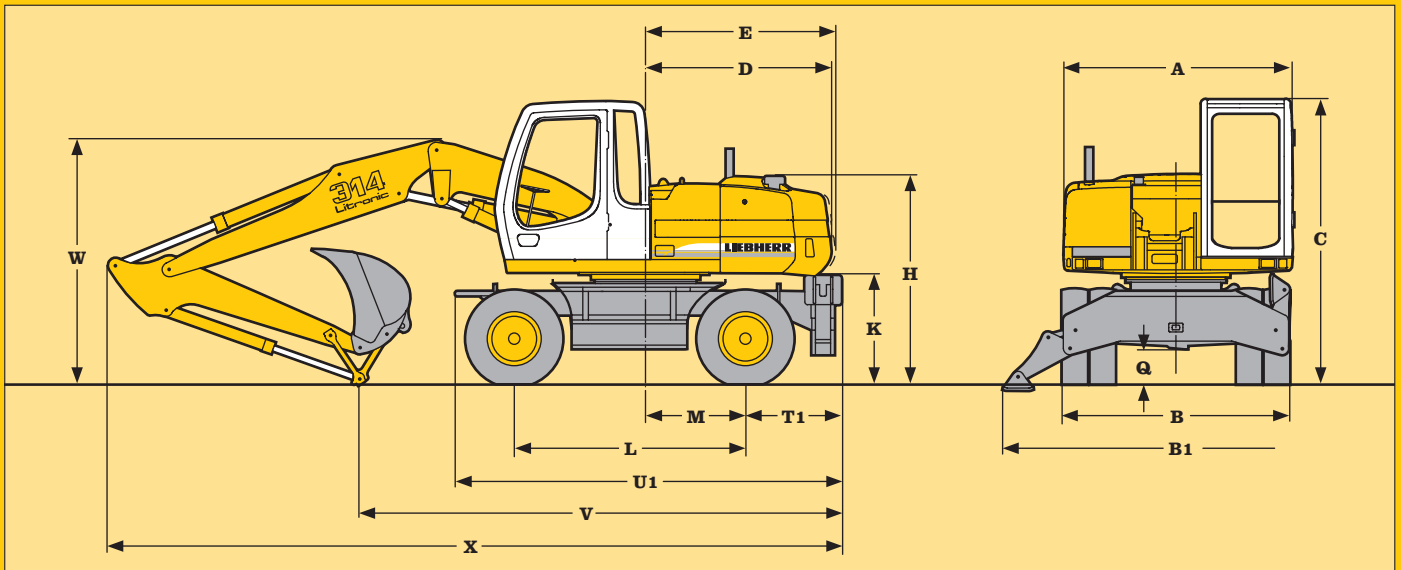
Drive	variable flow swashplate motor with automatic brake valve
Transmission	oversized two speed power shift transmission with additional creeper speed
Travel speed	0 - 2,5 km/h (creeper speed off road) 0 - 5,0 km/h (off road) 0 - 9,0 km/h (creeper speed on road) 0 - 20,0 km/h (road travel) 0 - 30,0 km/h Speeder (Option)
Axles	26 t excavator axles; automatic or operator controlled front axle oscillation lock
Brakes	wet, maintenance-free multi disc brakes, opt: rigid axle with drum brakes. Spring applied/pressure released parking brake integrated into gear box
Stabilization	2-point outriggers, stabilizing blade (adjustable during travel for dozing), stabilizing blade + 2 pt. outriggers



Attachment

Hydraulic cylinders	Liebherr cylinders with special seal system. Shock absorption
Pivots	sealed, low maintenance
Lubrication	centralized in easily accessible locations
Hydraulic connections	pipes and hoses equipped with SAE split-flange connections
Bucket	standard equipped with 8 t safety hook for lifting

Technical Data



A	_____	mm	2500	Q	_____	mm	350
B	_____	mm	2500	T1	_____	mm	1050
B1	_____	mm	3800	T2	_____	mm	1225
B2	_____	mm	2500	T3	_____	mm	1155
B3	_____	mm	2500	U1	_____	mm	4235
C	_____	mm	3100	U2	_____	mm	4415
D	_____	mm	2030	U3	_____	mm	4740
E	_____	mm	2030	V ¹⁾	_____	mm	5050 - 5500
H	_____	mm	2290	V ²⁾	_____	mm	4600 - 5550
I2	_____	mm	465	W ¹⁾	_____	mm	2800 - 2900
I3	_____	mm	390	W ²⁾	_____	mm	2700 - 3250
J2	_____	mm	615	X ¹⁾	_____	mm	8150 - 8650
J3	_____	mm	545	X ²⁾	_____	mm	7650 - 8250
K	_____	mm	1200				
L	_____	mm	2540				
M	_____	mm	1100				

¹⁾ for hydr. adjustable boom
²⁾ for gooseneck boom

Dimensions

Digging Envelope

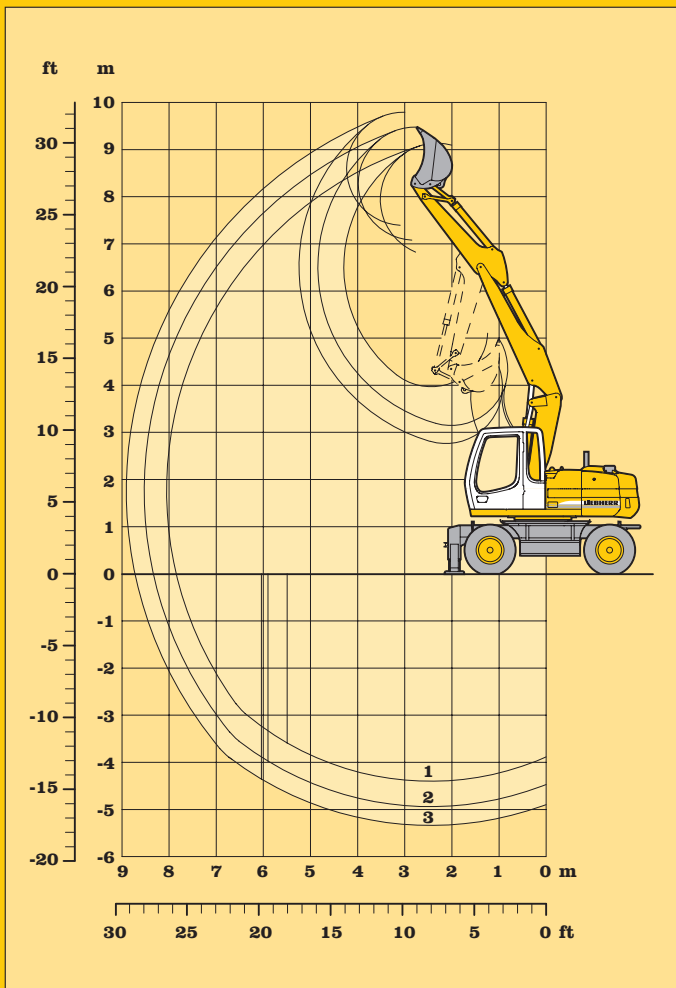
- 1 stick 1,70 m
- 2 stick 2,25 m
- 3 stick 2,65 m

Stick length	m	1,70	2,25	2,65
Max. digging depth	m	4,40	4,95	5,35
Max. reach at ground level	m	7,85	8,35	8,75
Max. dumping height	m	6,80	7,10	7,40
Max. teeth height	m	9,15	9,45	9,80
Max. digging force	kN	79,2	66,1	58,7
	t	8,1	6,7	6,0
Max. breakout force	kN	72,9	72,9	72,9
	t	7,4	7,4	7,4
Max. breakout force with ripper bucket:		102,2 kN (10,4 t)		

Operating Weight

The operating weight includes the basic machine with 8 tires plus spacer rings, hydr. adjustable boom 3,20 m, 2,25 m stick and the 850 mm/0,46 m³ bucket.

Undercarriage versions	kg
A 314 Litronic with stabilizer blade	13800
A 314 Litronic with 2 pt. outriggers	13900
A 314 Litronic with stabil. blade + 2 pt. outr.	14700



Buckets

Cutting width SAE	mm	230 ¹⁾	330 ¹⁾	390 ¹⁾	500 ¹⁾	550 ²⁾	650	850	1050	1250
Capacity SAE (heaped)	m ³	0,14	0,20	0,25	0,35	0,25	0,33	0,46	0,60	0,75
Max. material weight	t/m ³	1,8	1,8	1,8	1,8	1,8	1,8	1,8	1,8	1,8
Weights										
Standard bucket with UNI-Z-teeth	kg	-	-	-	-	-	280	330	380	430
Ripper bucket with Liebherr-teeth Z 13 P	kg	-	-	-	-	550	-	-	-	-
Bucket with ejector and Bofors-teeth	kg	320	350	360	390	-	-	-	-	-
For machine stability per ISO 10567 the max. stick length is:										
Stabilizers raised	m	2,65	2,65	2,65	2,65	2,65	2,65	2,65	1,70	-
Stabilizer blade down	m	2,65	2,65	2,65	2,65	2,65	2,65	2,65	2,65	1,70
2 point outriggers down	m	2,65	2,65	2,65	2,65	2,65	2,65	2,65	2,65	2,25
Stabilizer blade + 2 pt. outr. down	m	2,65	2,65	2,65	2,65	2,65	2,65	2,65	2,65	2,25

¹⁾ Bucket with ejector (limited digging depth)

²⁾ Ripper bucket

Backhoe Attachment with Hydr. Adjustable Boom

with stick 2,25 m					
Height m	Undercarriage	Radius of load from centerline of machine in m			
		3,0	4,5	6,0	7,5
6,0	Stabilizers raised		3,2 (3,7#)	1,9 (2,1#)	
	Stabil. blade down		3,6 (3,7#)	2,1# (2,1#)	
	2 pt. outrigger down		3,7# (3,7#)	2,1# (2,1#)	
	Blade + 2 pt. down		3,7# (3,7#)	2,1# (2,1#)	
4,5	Stabilizers raised		3,1 (4,7#)	1,9 (3,2)	
	Stabil. blade down		3,6 (4,7#)	2,2 (3,8#)	
	2 pt. outrigger down		4,4 (4,7#)	2,7 (3,8#)	
	Blade + 2 pt. down		4,7# (4,7#)	3,6 (3,8#)	
3,0	Stabilizers raised	5,5 (8,7#)	3,0 (5,0)	1,9 (3,2)	
	Stabil. blade down	6,4 (8,7#)	3,5 (5,5#)	2,2 (4,2#)	
	2 pt. outrigger down	7,9 (8,7#)	4,3# (5,5#)	2,7 (4,2#)	
	Blade + 2 pt. down	8,7# (8,7#)	5,5# (5,5#)	3,6 (4,2#)	
1,5	Stabilizers raised	5,5 (9,3#)	3,0 (4,9)	1,8 (3,1#)	1,1 (2,0#)
	Stabil. blade down	6,2 (9,3#)	3,5 (6,2#)	2,1 (4,5#)	1,3 (2,0#)
	2 pt. outrigger down	7,7 (9,3#)	4,1 (6,2#)	2,6 (4,5#)	1,7 (2,0#)
	Blade + 2 pt. down	9,3# (9,3#)	5,4# (6,2#)	3,5 (4,5#)	2,0# (2,0#)
0	Stabilizers raised	5,3 (9,6)	2,9 (5,0)	1,7 (3,0)	
	Stabil. blade down	6,2 (10,2#)	3,3 (6,4#)	2,0 (4,5#)	
	2 pt. outrigger down	7,8 (10,2#)	4,2 (6,4#)	2,5 (4,5#)	
	Blade + 2 pt. down	10,2# (10,2#)	5,5 (6,4#)	3,4 (4,5#)	
- 1,5	Stabilizers raised	5,0 (9,9)	2,6 (4,7)	1,6 (2,9)	
	Stabil. blade down	5,9 (10,5#)	3,0 (6,5#)	1,8 (4,3#)	
	2 pt. outrigger down	7,7 (10,5#)	3,8 (6,5#)	2,4 (4,3#)	
	Blade + 2 pt. down	10,5# (10,5#)	5,3 (6,5#)	3,2 (4,3#)	
- 3,0	Stabilizers raised	4,7 (9,6)	2,4 (4,6)		
	Stabil. blade down	5,6 (10,1#)	2,9 (5,4#)		
	2 pt. outrigger down	7,4 (10,1#)	3,7 (5,4#)		
	Blade + 2 pt. down	10,1# (10,1#)	5,1 (5,4#)		
- 4,5	Stabilizers raised				
	Stabil. blade down				
	2 pt. outrigger down				
	Blade + 2 pt. down				

with stick 2,65 m					
Height m	Undercarriage	Radius of load from centerline of machine in m			
		3,0	4,5	6,0	7,5
6,0	Stabilizers raised		3,2# (3,2#)	1,9 (2,5#)	
	Stabil. blade down		3,2# (3,2#)	2,2 (2,5#)	
	2 pt. outrigger down		3,2# (3,2#)	2,5# (2,5#)	
	Blade + 2 pt. down		3,2# (3,2#)	2,5# (2,5#)	
4,5	Stabilizers raised		3,1 (3,8#)	2,0 (3,2)	
	Stabil. blade down		3,6 (3,8#)	2,2 (3,4#)	
	2 pt. outrigger down		3,8# (3,8#)	2,7 (3,4#)	
	Blade + 2 pt. down		3,8# (3,8#)	3,4# (3,4#)	
3,0	Stabilizers raised	5,7 (7,9#)	3,0 (5,0)	1,9 (3,2)	1,2 (2,1)
	Stabil. blade down	6,5# (7,9#)	3,5 (5,2#)	2,2 (4,0#)	1,4 (2,3#)
	2 pt. outrigger down	7,9# (7,9#)	4,2 (5,2#)	2,7 (4,0#)	1,8 (2,3#)
	Blade + 2 pt. down	7,9# (7,9#)	5,2# (5,2#)	3,5 (4,0#)	2,3# (2,3#)
1,5	Stabilizers raised	5,4 (9,0#)	3,0 (4,9)	1,9 (3,2)	1,1 (2,1)
	Stabil. blade down	6,3# (9,0#)	3,4 (6,0#)	2,1 (4,4#)	1,3 (2,9#)
	2 pt. outrigger down	7,7 (9,0#)	4,2 (6,0#)	2,6 (4,4#)	1,7 (2,9#)
	Blade + 2 pt. down	9,0# (9,0#)	5,4 (6,0#)	3,5 (4,4#)	2,3 (2,9#)
0	Stabilizers raised	5,4 (9,5)	2,9 (4,9)	1,7 (3,0)	1,1 (2,0)
	Stabil. blade down	6,3# (9,8#)	3,3 (6,3#)	2,0 (4,5#)	1,3 (2,7#)
	2 pt. outrigger down	7,7 (9,8#)	4,2 (6,3#)	2,5 (4,5#)	1,7 (2,7#)
	Blade + 2 pt. down	9,8# (9,8#)	5,4 (6,3#)	3,4 (4,5#)	2,3 (2,7#)
- 1,5	Stabilizers raised	5,0 (9,8)	2,7 (4,8)	1,6 (2,9)	
	Stabil. blade down	5,9 (10,4#)	3,2 (6,4#)	1,9 (4,5#)	
	2 pt. outrigger down	7,7 (10,4#)	4,0 (6,4#)	2,4 (4,5#)	
	Blade + 2 pt. down	10,4# (10,4#)	5,4 (6,4#)	3,2 (4,5#)	
- 3,0	Stabilizers raised	4,8 (9,6)	2,4 (4,5)	1,5 (2,8)	
	Stabil. blade down	5,7 (10,6#)	2,8 (6,0#)	1,8 (3,1#)	
	2 pt. outrigger down	7,4 (10,6#)	3,6 (6,0#)	2,3 (3,1#)	
	Blade + 2 pt. down	10,6# (10,6#)	5,1 (6,0#)	3,1# (3,1#)	
- 4,5	Stabilizers raised				
	Stabil. blade down				
	2 pt. outrigger down				
	Blade + 2 pt. down				

The lift capacities are stated in metric tonnes (t) on the backhoe bucket's load hook, and can be lifted 360° on firm, level supporting surface with blocked oscillating axle.

Capacities shown in brackets are valid when the undercarriage is in longitudinal position and are established over the steering axle (travel position) with stabilisers raised, and over rigid axle with stabilisers down.

Capacities are valid with adjusting cylinder(s) in optimal position.

Indicated loads are based on ISO 10567 standard and do not exceed 75 % of tipping or 87 % of hydraulic capacity (indicated via #).

Maximum load for the backhoe bucket's load hook is 8 metric tons.

Without bucket (0,5 m³), the lift capacities will increase by 400 kg, without bucket cylinder, link and lever they increase by an additional 220 kg.

Lifting capacity of the excavator is limited by machine stability, hydraulic capacity and maximum permissible load of the load hook.

According to European Standard, EN 474-5: In the European Union excavators have to be equipped with an overload warning device and automatic check valves on the hoist cylinders, when they are used for lifting operations which require the use of lifting accessories.

Lift Capacities A 314 Litronic® with Hydr. Adjustable Boom

Digging Envelope

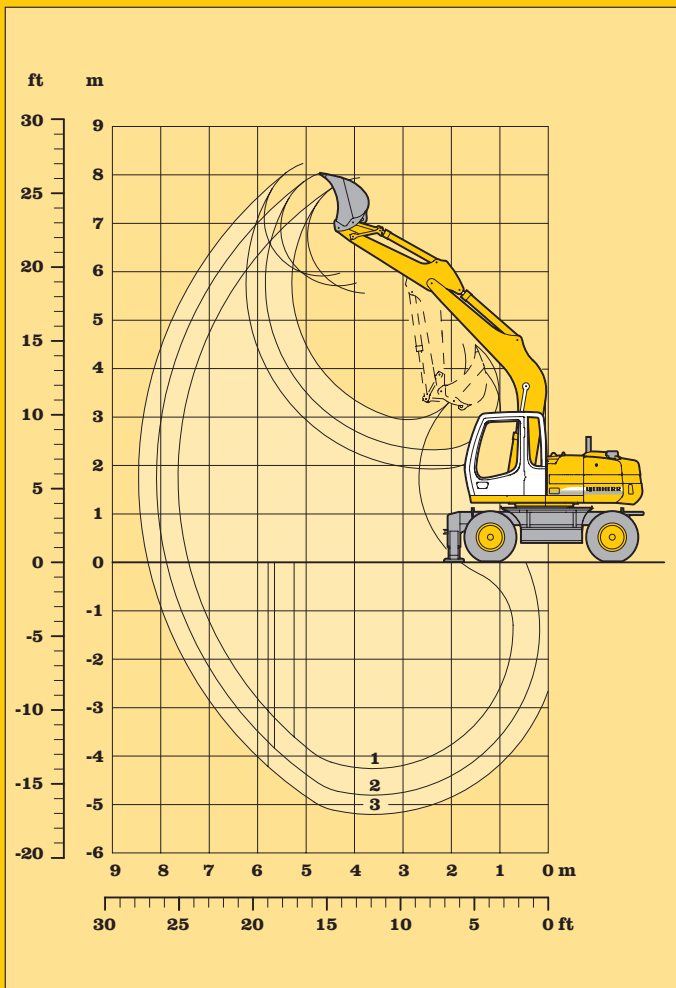
- 1 stick 1,70 m
- 2 stick 2,25 m
- 3 stick 2,65 m

Stick length	m	1,70	2,25	2,65
Max. digging depth	m	4,30	4,85	5,25
Max. reach at ground level	m	7,40	7,85	8,25
Max. dumping height	m	5,60	5,75	5,95
Max. teeth height	m	7,95	8,05	8,25
Max. digging force	kN	79,2	66,1	58,7
	t	8,1	6,7	6,0
Max. breakout force	kN	72,9	72,9	72,9
	t	7,4	7,4	7,4
Max. breakout force with ripper bucket:		102,2 kN (10,4 t)		

Operating Weight

The operating weight includes the basic machine with 8 tires plus spacer rings, gooseneck boom 4,50 m, 2,25 m stick and the 850 mm/0,46 m³ bucket.

Undercarriage versions	kg
A 314 Litronic with stabilizer blade	13400
A 314 Litronic with 2 pt. outriggers	13500
A 314 Litronic with stabil. blade + 2 pt. outr.	14300



Buckets

Cutting width SAE	mm	230 ¹⁾	330 ¹⁾	390 ¹⁾	500 ¹⁾	550 ²⁾	650	850	1050	1250
Capacity SAE (heaped)	m ³	0,14	0,20	0,25	0,35	0,25	0,33	0,46	0,60	0,75
Max. material weight	t/m ³	1,8	1,8	1,8	1,8	1,8	1,8	1,8	1,8	1,8
Weights										
Standard bucket with UNI-Z-teeth	kg	-	-	-	-	-	280	330	380	430
Ripper bucket with Liebherr-teeth Z 13 P	kg	-	-	-	-	550	-	-	-	-
Bucket with ejector and Bofors-teeth	kg	320	350	360	390	-	-	-	-	-
For machine stability per ISO 10567 the max. stick length is:										
Stabilizers raised	m	2,65	2,65	2,65	2,65	2,65	2,65	2,65	2,65	-
Stabilizer blade down	m	2,65	2,65	2,65	2,65	2,65	2,65	2,65	2,65	2,25
2 point outriggers down	m	2,65	2,65	2,65	2,65	2,65	2,65	2,65	2,65	2,25
Stabilizer blade + 2 pt. outr. down	m	2,65	2,65	2,65	2,65	2,65	2,65	2,65	2,65	2,25

¹⁾ Bucket with ejector (limited digging depth)

²⁾ Ripper bucket

Backhoe Attachment with Gooseneck Boom 4,50 m

with stick 2,25 m					
Height m	Undercarriage	Radius of load from centerline of machine in m			
		3,0	4,5	6,0	7,5
6,0	Stabilizers raised Stabil. blade down 2 pt. outrigger down Blade + 2 pt. down				
4,5	Stabilizers raised Stabil. blade down 2 pt. outrigger down Blade + 2 pt. down			1,9 (2,8#) 2,2 (2,8#) 2,7 (2,8#) 2,8# (2,8#)	
3,0	Stabilizers raised Stabil. blade down 2 pt. outrigger down Blade + 2 pt. down	5,4 (6,9#) 6,3 (6,9#) 6,9# (6,9#) 6,9# (6,9#)	2,9 (4,7#) 3,3 (4,7#) 4,1 (4,7#) 4,7# (4,7#)	1,8 (3,1) 2,1 (3,9#) 2,6 (3,9#) 3,5 (3,9#)	
1,5	Stabilizers raised Stabil. blade down 2 pt. outrigger down Blade + 2 pt. down	4,6 (8,6#) 5,5 (8,6#) 7,2 (8,6#) 8,6# (8,6#)	2,6 (4,7) 3,0 (5,8#) 3,8 (5,8#) 5,3 (5,8#)	1,7 (3,0) 2,0 (4,3#) 2,5 (4,3#) 3,3 (4,3#)	
0	Stabilizers raised Stabil. blade down 2 pt. outrigger down Blade + 2 pt. down	4,4 (7,7#) 5,2 (7,7#) 6,9 (7,7#) 7,7# (7,7#)	2,4 (4,5) 2,9 (6,4#) 3,6 (6,4#) 5,1 (6,4#)	1,6 (2,9) 1,9 (4,6#) 2,4 (4,6#) 3,2 (4,6#)	
- 1,5	Stabilizers raised Stabil. blade down 2 pt. outrigger down Blade + 2 pt. down	4,3 (9,0) 5,2 (9,6#) 6,9 (9,6#) 9,6# (9,6#)	2,4 (4,4) 2,8 (6,2#) 3,6 (6,2#) 5,0 (6,2#)	1,6 (2,9) 1,8 (4,4#) 2,3 (4,4#) 3,2 (4,4#)	
- 3,0	Stabilizers raised Stabil. blade down 2 pt. outrigger down Blade + 2 pt. down	4,5 (7,7#) 5,3 (7,7#) 7,0 (7,7#) 7,7# (7,7#)	2,4 (4,5) 2,8 (5,1#) 3,6 (5,1#) 5,0 (5,1#)		
- 4,5	Stabilizers raised Stabil. blade down 2 pt. outrigger down Blade + 2 pt. down				

with stick 2,65 m					
Height m	Undercarriage	Radius of load from centerline of machine in m			
		3,0	4,5	6,0	7,5
6,0	Stabilizers raised Stabil. blade down 2 pt. outrigger down Blade + 2 pt. down				
4,5	Stabilizers raised Stabil. blade down 2 pt. outrigger down Blade + 2 pt. down			1,9 (2,9#) 2,2 (2,9#) 2,7 (2,9#) 2,9# (2,9#)	
3,0	Stabilizers raised Stabil. blade down 2 pt. outrigger down Blade + 2 pt. down		2,9 (4,3#) 3,3 (4,3#) 4,1 (4,3#) 4,3# (4,3#)	1,8 (3,1) 2,1 (3,6#) 2,6 (3,6#) 3,5 (3,6#)	
1,5	Stabilizers raised Stabil. blade down 2 pt. outrigger down Blade + 2 pt. down	4,8 (9,0#) 5,7 (9,0#) 7,4 (9,0#) 9,0# (9,0#)	2,6 (4,7) 3,1 (5,5#) 3,9 (5,5#) 5,3 (5,5#)	1,7 (3,0) 2,0 (4,1#) 2,5 (4,1#) 3,3 (4,1#)	
0	Stabilizers raised Stabil. blade down 2 pt. outrigger down Blade + 2 pt. down	4,4 (7,8#) 5,2 (7,8#) 6,9 (7,8#) 7,8# (7,8#)	2,4 (4,5) 2,8 (6,2#) 3,6 (6,2#) 5,0 (6,2#)	1,6 (2,9) 1,8 (4,5#) 2,4 (4,5#) 3,2 (4,5#)	
- 1,5	Stabilizers raised Stabil. blade down 2 pt. outrigger down Blade + 2 pt. down	4,3 (8,9) 5,1 (9,5#) 6,8 (9,5#) 9,5# (9,5#)	2,3 (4,4) 2,7 (6,3#) 3,5 (6,3#) 4,9 (6,3#)	1,5 (2,8) 1,8 (4,4#) 2,3 (4,4#) 3,2 (4,4#)	
- 3,0	Stabilizers raised Stabil. blade down 2 pt. outrigger down Blade + 2 pt. down	4,3 (8,3#) 5,2 (8,3#) 6,9 (8,3#) 8,3# (8,3#)	2,3 (4,4) 2,8 (5,5#) 3,5 (5,5#) 5,0 (5,5#)		
- 4,5	Stabilizers raised Stabil. blade down 2 pt. outrigger down Blade + 2 pt. down				

The lift capacities are stated in metric tonnes (t) on the backhoe bucket's load hook, and can be lifted 360° on firm, level supporting surface with closed steering axle.

Capacities shown in brackets are valid when the undercarriage is in longitudinal position and are established over the steering axle (travel position) with stabilisers raised, and over rigid axle with stabilisers down.

Capacities are valid with adjusting cylinder(s) in optimal position.

Indicated loads are based on ISO 10567 standard and do not exceed 75 % of tipping or 87 % of hydraulic capacity (indicated via #).

Maximum load for the backhoe bucket's load hook is 8 metric tons.

Without bucket (0,5 m³), the lift capacities will increase by 400 kg, without bucket cylinder, link and lever they increase by an additional 220 kg.

Lifting capacity of the excavator is limited by machine stability, hydraulic capacity and maximum permissible load of the load hook.

According to European Standard, EN 474-5: In the European Union excavators have to be equipped with an overload warning device and automatic check valves on the hoist cylinders, when they are used for lifting operations which require the use of lifting accessories.

Lift Capacities A 314 Litronic® with Gooseneck Boom 4,50 m

Digging Envelope

- 1 stick 1,70 m
- 2 stick 2,25 m
- 3 stick 2,65 m

Stick length	m	1,70	2,25	2,65
Max. digging depth	m	5,65	6,20	6,60
Max. reach at ground level	m	7,65	8,15	8,50
Max. dumping height	m	5,50	5,85	6,15

Clamshell model:

8 B

Max. tooth force:

52 kN (5,3 t)

Max. torque of hydr. swivel:

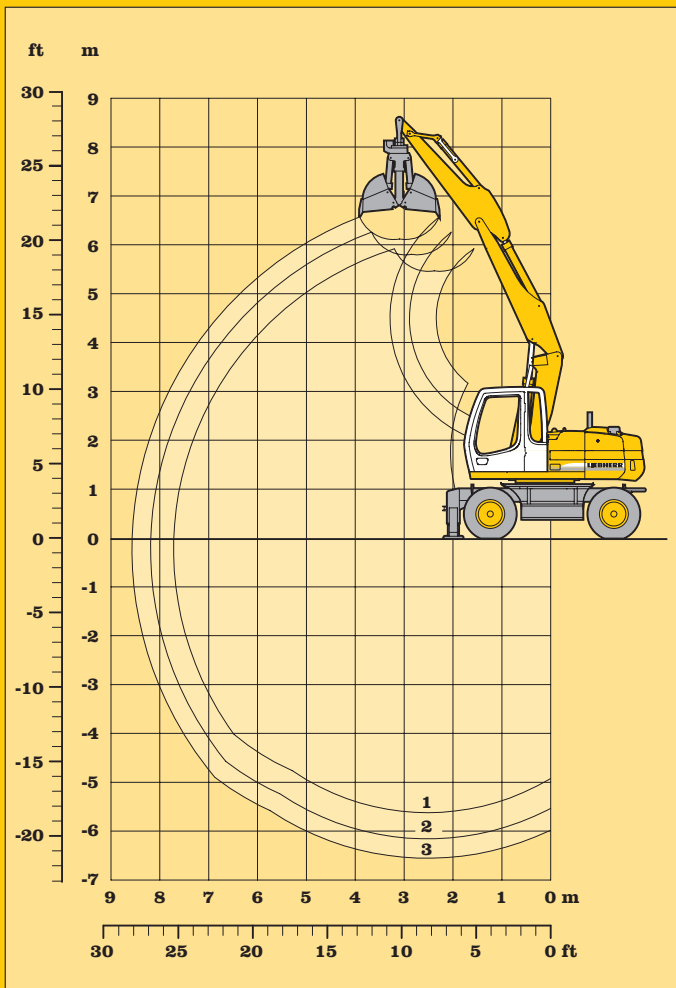
1,40 kNm

Operating Weight

The operating weight includes the basic machine with 8 tires plus spacer rings, hydr. adjustable boom 3,20 m, 2,25 m stick and the clamshell model 8 B/0,40 m³.

Undercarriage versions

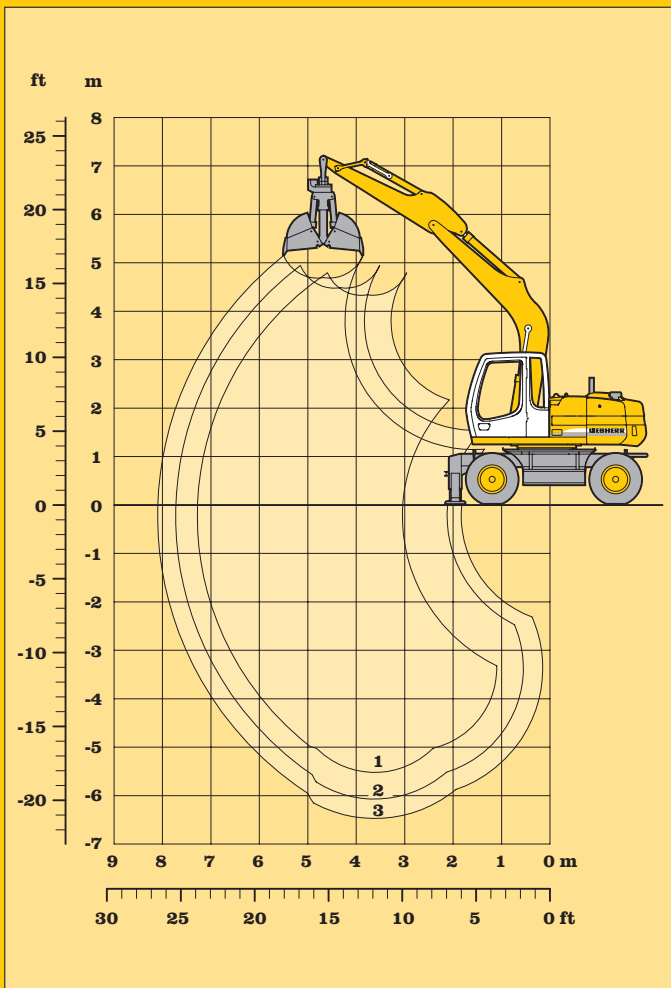
	kg
A 314 Litronic with stabilizer blade	14250
A 314 Litronic with 2 pt. outriggers	14350
A 314 Litronic with stabil. blade + 2 pt. outr.	15200



Clamshell Model 8 B

		without ejector					with ejector			
		320	400	600	800	1000	320	400	600	800
Width of shells	mm	320	400	600	800	1000	320	400	600	800
Capacity	m ³	0,17	0,22	0,30	0,40	0,80	0,17	0,22	0,30	0,40
Max. material weight	t/m ³	1,8	1,8	1,8	1,8	1,2	1,8	1,8	1,8	1,8
Weight incl. suspension and hydr. swivel	kg	710	750	750	800	900	760	810	830	890
For machine stability per ISO 10567 the max. stick length is:										
Stabilizers raised	m	2,65	2,65	2,65	2,25	-	2,65	2,65	2,25	-
Stabilizer blade down	m	2,65	2,65	2,65	2,65	1,70	2,65	2,65	2,65	2,25
2 point outriggers down	m	2,65	2,65	2,65	2,65	2,25	2,65	2,65	2,65	2,65
Stabilizer blade + 2 pt. outr. down	m	2,65	2,65	2,65	2,65	2,25	2,65	2,65	2,65	2,65

Clamshell Attachment with Hydr. Adjustable Boom



Digging Envelope

- 1 stick 1,70 m
- 2 stick 2,25 m
- 3 stick 2,65 m

Stick length	m	1,70	2,25	2,65
Max. digging depth	m	5,50	6,05	6,45
Max. reach at ground level	m	7,25	7,70	8,05
Max. dumping height	m	4,35	4,50	4,70

Clamshell model:

8 B

Max. tooth force:

52 kN (5,3 t)

Max. torque of hydr. swivel:

1,40 kNm

Operating Weight

The operating weight includes the basic machine with 8 tires plus spacer rings, gooseneck boom 4,50 m, 2,25 m stick and the clamshell model 8 B/0,40 m³.

Undercarriage versions	kg
A 314 Litronic with stabilizer blade	13900
A 314 Litronic with 2 pt. outriggers	14000
A 314 Litronic with stabil. blade + 2 pt. outr.	14750

Clamshell Model 8 B

		without ejector					with ejector			
		320	400	600	800	1000	320	400	600	800
Width of shells	mm	320	400	600	800	1000	320	400	600	800
Capacity	m ³	0,17	0,22	0,30	0,40	0,80	0,17	0,22	0,30	0,40
Max. material weight	t/m ³	1,8	1,8	1,8	1,8	1,2	1,8	1,8	1,8	1,8
Weight incl. suspension and hydr. swivel	kg	710	750	750	800	900	760	810	830	890
For machine stability per ISO 10567 the max. stick length is:										
Stabilizers raised	m	2,65	2,65	2,65	2,25	-	2,65	2,65	2,65	2,25
Stabilizer blade down	m	2,65	2,65	2,65	2,65	1,70	2,65	2,65	2,65	2,65
2 point outriggers down	m	2,65	2,65	2,65	2,65	2,25	2,65	2,65	2,65	2,65
Stabilizer blade + 2 pt. outr. down	m	2,65	2,65	2,65	2,65	2,25	2,65	2,65	2,65	2,65

Clamshell Attachment with Gooseneck Boom 4,50 m

Digging Envelope

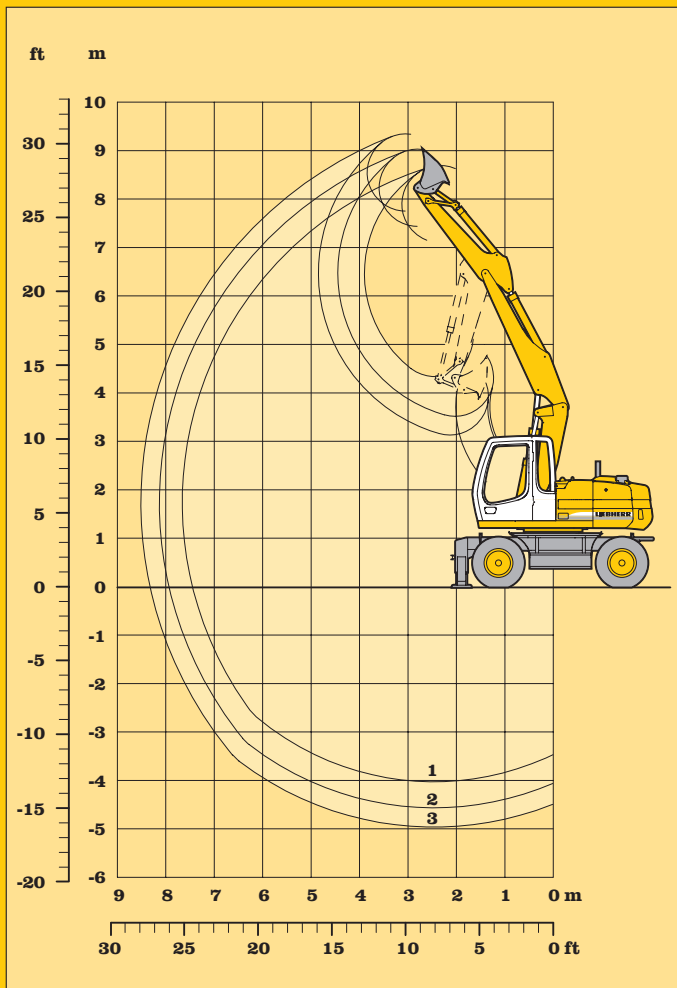
- 1 stick 1,70 m
- 2 stick 2,25 m
- 3 stick 2,65 m

Stick length	m	1,70	2,25	2,65
Max. digging depth	m	4,00	4,55	4,95
Max. reach at ground level	m	7,45	7,90	8,30
Max. dumping height	m	7,20	7,50	7,80
Max. teeth height	m	8,75	9,05	9,40

Operating Weight

The operating weight includes the basic machine with 8 tires plus spacer rings, hydr. adjustable boom 3,20 m, 2,25 m stick and the ditchcleaning bucket 2000 mm/0,48 m³.

Undercarriage versions	kg
A 314 Litronic with stabilizer blade	13800
A 314 Litronic with 2 pt. outriggers	14000
A 314 Litronic with stabil. blade + 2 pt. outr.	14800

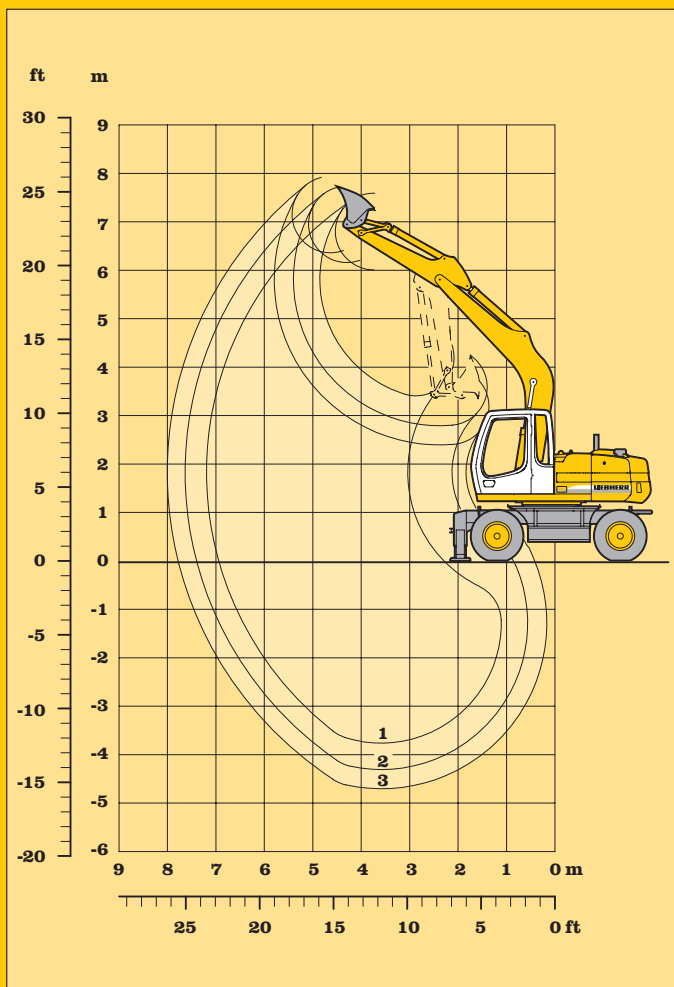


Ditchcleaning Buckets

Cutting width SAE	mm	1700 ¹⁾	2000 ¹⁾	2000	2000 (with 2 x 45° rotator)
Capacity SAE (heaped)	m ³	0,29	0,34	0,48	0,48
Max. material weight	t/m ³	1,8	1,8	1,8	1,8
Weight of bucket	kg	280	330	360	570
For machine stability per ISO 10567 the max. stick length is:					
Stabilizers raised	m	2,65	2,65	2,25	-
Stabilizer blade down	m	2,65	2,65	2,65	2,65
2 point outriggers down	m	2,65	2,65	2,65	2,65
Blade + 2-pt. outr. down	m	2,65	2,65	2,65	2,65

¹⁾ Bucket for narrow bottomed ditches

Ditchcleaning Attachment with Hydr. Adjustable Boom



Digging Envelope

- 1 stick 1,70 m
- 2 stick 2,25 m
- 3 stick 2,65 m

Stick length	m	1,70	2,25	2,65
Max. digging depth	m	3,90	4,45	4,85
Max. reach at ground level	m	7,00	7,45	7,85
Max. dumping height	m	6,00	6,15	6,35
Max. teeth height	m	7,60	7,70	7,90

Operating Weight

The operating weight includes the basic machine with 8 tires plus spacer rings, gooseneck boom 4,50 m, 2,25 m stick and the ditchcleaning bucket 2000 mm/0,48 m³.

Undercarriage versions	kg
A 314 Litronic with stabilizer blade	13450
A 314 Litronic with 2 pt. outriggers	13550
A 314 Litronic with stabil. blade + 2 pt. outr.	14350

Ditchcleaning Buckets

Cutting width SAE	mm	1700 ¹⁾	2000 ¹⁾	2000	2000 (with 2 x 45° rotator)
Capacity SAE (heaped)	m ³	0,29	0,34	0,48	0,48
Max. material weight	t/m ³	1,8	1,8	1,8	1,8
Weight of bucket	kg	280	330	360	570
For machine stability per ISO 10567 the max. stick length is:					
Stabilizers raised	m	2,65	2,65	2,25	-
Stabilizer blade down	m	2,65	2,65	2,25	2,25
2 point outriggers down	m	2,65	2,65	2,25	2,25
Blade + 2-pt. outr. down	m	2,65	2,65	2,25	2,25

¹⁾ Bucket for narrow bottomed ditches

Ditchcleaning-Attachment with Gooseneck Boom 4,50 m

Standard Equipment

Undercarriage

- Two speed powershift transmission plus creeper speed
- Creeper speed electrically switchable from cab
- Two circuit travel brake with accumulator
- Proportional power steering with mechanical back up
- Service free parking brake inside transmission (spring activated)
- Autocheckvalve directly on each stabilizer cylinder
- Clam travel bracket
- 2 lockable large rustfree storage boxes
- New tires
- Equipped with independent control with 2-point outriggers and blade as standard
- Equipped with step as standard when prop up blade attached to rear axle

Uppercarriage

- Engine hood with lift help, lockable
- Large and lockable tool box
- Main switch for electric circuit
- Handrails, slip resistant surfaces
- Handrails, non slip surfaces
- Tool kit
- Maintenance-free swing brake lock
- Maintenance-free HD-batteries
- Comprehensive sound insulation
- Pin lock upper/lower

Hydraulics

- Electronic pump regulation at all R.P.M.
- Stepless work mode selector
- Stepless engine output
- Pressure storage for controlled lowering of attachments with engine turned off
- Tank locking valve in suction line
- Pressure compensation
- Flow compensation
- Filter with partial micro filtration (5 µm)
- Hook ups for pressure checks

Engine

- Direct injection
- Turbocharger, after-cooled
- Thermostatically controlled fan
- Dry-type air cleaner with pre-cleaner, main and safety elements with automatic dust discharge
- Fuel pre-filter
- Sensor controlled engine idling

Operator Cab

- Pedal controlled positioning swing brake
- All tinted windows
- Door with sliding window
- Large roof window with integrated sun visors
- Rain hood over front window opening
- Cab heater with defroster
- Wiper/washer
- Wiper with stepless interval mode
- 6-way adjustable Liebherr seat
- Seat and consoles independently adjustable
- Backward/forward seat adjusting with automatic integrated height adjustment
- Cloth hook
- Dome light
- Sun blind
- Inside and outside rear mirror
- Cigarette lighter and ashtray
- Variably designed storage compartment
- Removable customized foot mat
- Storage tray
- Warning lights
- Display for condition monitoring
- Mechanical hour meter, readable from outside the cab

Attachment

- Cylinders with shock absorber
- Sealed pivots
- Centralized lube points
- SAE-dbl flange connection for all hi-pressure lines
- Locking of connecting link during clam work
- Safety lift hook on hoe buckets
- Hydr. lines for clam operation on stick
- Hose quick connections for clam operation
- Two way valves for bucket/clam use
- Flood light on boom
- Ditch cleaning bucket generally with rear cutting edge and interchangeable front blade

Optional Equipment

- Independent outrigger control
- Customized colors
- Choice of tires

- Electric fuel tank filler pump
- Extended tool kit
- Customized colors

- Additional hydraulic circuits
- Bio degradable hydraulic oil
- Full flow micro filtration
- Exhaust filter

- Cold start aid

- Removable lower section of front window with storage
- Preparation for radio installation
- Stereo radio
- Airpressure adjustable seat
- Beacon
- Optical and acoustical warning if outriggers are not fully retracted
- Electronic drive away lock
- Additional flood lights
- Fan
- Bullet proof front window (fixed installation - can not be opened)
- Air condition

- Safety check valves for all attachment cylinders
- Overload warning device
- Hydraulic or manual quick change tool adaptor
- Liebherr line of clams and grapples
- Spezial buckets and other tools
- Customized colors

Options and/or special attachments, supplied by vendors other than Liebherr, are only to be installed with the knowledge and approval of Liebherr to retain warranty.

LIEBHERR-HYDRAULIKBAGGER GMBH, D-88457 Kirchdorf/Ilter, ☎ (0 73 54) 80-0, Fax (0 73 54) 80-72 94
www.liebherr.com, E-Mail: info@lhb.liebherr.com

With compliments: