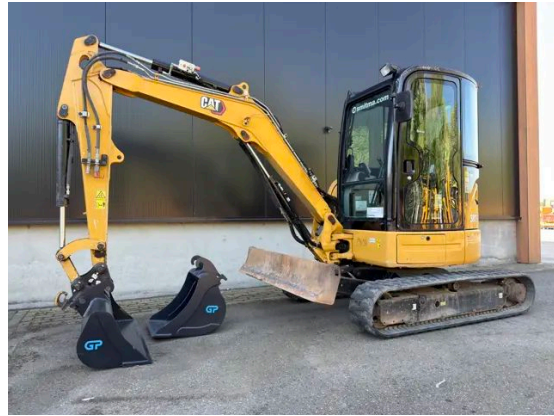


INSPECTION REPORT

CATERPILLAR 303.5ECR

The Caterpillar 303.5ECR is a robust mini excavator featuring a Caterpillar C1.8 engine delivering 24.8 kW of power. It includes a mono boom with a 1.57m stick length, a mechanical quick release, and comes equipped with a ditch cleaning bucket (1.20m wide) and an additional digging bucket (0.50m wide). It is piped for a hammer and has burst valves on both lift and stick cylinders. Additional features include an AM/FM radio and a certified hour meter from Caterpillar. It remains in very good and clean condition, weighing 3580 kg with dimensions of 4.60 x 1.78 x 2.48 meters.



Specifications

| | |
|---------------|-------------------|
| Year | 2020 |
| Hours | 1688 |
| Weight | 3580 kg |
| Serial number | CAT3035ETJX203138 |
| Reference | 211995 |

Features

| | |
|--------------------|---------|
| Engine power in kW | 24.8 kW |
| CE | ✓ |

Documents

| | |
|------------------|---|
| Parts book | ✓ |
| Operation manual | ✓ |

General Appearance

| | |
|-------------------------------|-------|
| Stamped serial number checked | Yes |
| Serial number plate checked | Yes |
| Paint | ★★★★☆ |
| Body work | ★★★★☆ |
| Decals | ★★★★☆ |
| Engine cover doors | ★★★★☆ |
| Chassis | ★★★★☆ |
| Bottom plates | ★★★★☆ |
| Grab irons | ★★★★☆ |
| Cabin | ★★★★☆ |
| Cracks or welds | No |

Engine Details And Condition

| | |
|--------------------------|----------|
| Engine number | 7JY5904 |
| Arrangement number | 549-8395 |
| Air cleaner | Clean |
| Anti-freeze level °C | -41°C |
| Diesel anti-freeze added | Yes |
| Diesel level ok | Yes |
| Cooling liquid level ok | Yes |
| Engine oil level ok | Yes |
| Exhaust manifold | ★★★★☆ |
| Muffler | ★★★★☆ |
| Exhaust stack | ★★★★☆ |
| Engine supports | ★★★★☆ |
| Hoses | ★★★★☆ |
| Good cold start | Yes |
| Engine power | ★★★★☆ |
| Blow by | ★★★★☆ |
| Knocking | No |
| Compression in the water | No |
| Water in the oil | No |
| Oil in the water | No |
| Smoke | Normal |
| Engine leaks | No |
| Belts and pulleys | ★★★★☆ |
| Fan | ★★★★☆ |
| Radiator | ★★★★☆ |

Bucket

| | |
|---------------------------------|-------|
| Overall condition of the bucket | ★★★★☆ |
|---------------------------------|-------|

Undercarriage Left In Life In %

| | |
|-------------------|-----|
| Overall condition | 70% |
| Sprockets | 70% |
| Idlers | 70% |
| Bottom rollers | 50% |
| Top rollers | 90% |
| Track pads | 60% |

Safety Items

| | |
|-----------|-----------|
| Seat belt | Available |
| Horn | Working |

Operator Station

| | |
|-------------------|---|
| Hourmeter | Working, hours certified by Caterpillar |
| Heater | Working |
| Gauges | Working |
| Switches | ★★★★★ |
| Display | ★★★★★ |
| Warning | No warnings available |
| Mirrors | Not broken |
| Cabin glass | Not broken |
| Windshield wipers | Working |
| Interior lights | Working |
| Cabin floor | ★★★★★ |
| Interior roof | ★★★★★ |
| Seat | ★★★★★ |
| Door lock | Working |

Hydraulics

| | |
|------------------------------------|---------|
| Hydraulic oil level ok | Yes |
| Hydraulic lines and fittings | ★★★★★ |
| Hydraulic tank/sight glass and cap | ★★★★★ |
| Travel motors | ★★★★★ |
| High and low travel speed working | Working |
| Oil level left final drive ok | Yes |
| Left final drive leaking | No |
| Oil level right final drive ok | Yes |
| Right final drive leaking | No |
| Hydraulic valves leaking | No |
| Noise hydraulic pump normal | Yes |
| Operating condition hydraulics | ★★★★★ |

Boom And Stick

| | |
|-------------------------|-----------|
| Play lift cilinder | ★ ★ ★ ★ ★ |
| Little play | |
| Lift cylinders leaking | No |
| Play boom pen | ★ ★ ★ ★ ★ |
| Play stick cylinder | ★ ★ ★ ★ ★ |
| Stick cylinder leaking | No |
| Play stick pen | ★ ★ ★ ★ ★ |
| Little play | |
| Play bucket cylinder | ★ ★ ★ ★ ★ |
| Bucket cylinder leaking | No |
| Play bucket link | ★ ★ ★ ★ ★ |
| Play bucket pen | ★ ★ ★ ★ ★ |
| Condition monoboam | ★ ★ ★ ★ ★ |
| Condition stick | ★ ★ ★ ★ ★ |

Swing Circle


| | |
|---------------------------|-----------|
| Play on the swing bearing | ★ ★ ★ ★ ★ |
| Swing gear | ★ ★ ★ ★ ★ |
| Swing drive leaking | No |
| Swing brake operating | Yes |
| Swing noice normal | Yes |
| Hydraulic swivel leaking | No |
| Operating condition | ★ ★ ★ ★ ★ |

Electrical, Starting And Charging System

| | |
|------------------------|-----------|
| Alternator functioning | Yes |
| Wiring | ★ ★ ★ ★ ★ |
| Batteries | ★ ★ ★ ★ ★ |
| Starter | ★ ★ ★ ★ ★ |
| Cabin lights working | Yes |

 [+31 \(0\) 77 3999 840](tel:+31(0)773999840)

 sales@smitma.com

 [+31 \(0\) 77 3999 840](https://wa.me/31773999840)