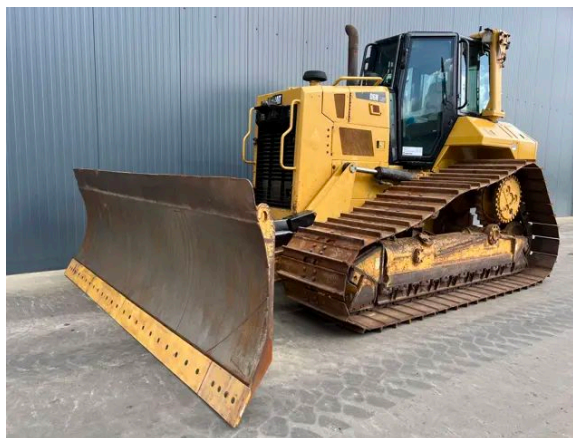


CATERPILLAR D6N LGP

Description

Caterpillar D6N LGP, Engine brand Caterpillar , C7.1, EPA, Air conditioning, Erops cabin, 6-way blade, Width of the blade 3.98m, Differential steering, Ripper valve, System one undercarriage, Width of the pads 840mm, Draw bar, Backup camera, Prepared for GPS, Beacon, New ripper available, ask for quotation, Hours certified by Caterpillar, In very good and clean condition.



Year	2016
Hours	12791
Weight	18300 kg
Serial number	CAT00D6NPMG500441
Reference	208862

[Download photos](#)


CONTACT US:
SALES@SMITMA.COM
+31(0)773999840

New/Excellent
★★★★★

Very good
★★★★☆

Good
★★★☆☆

Fair
★★★☆☆

Poor
★★★☆☆

INSPECTION REPORT

FEATURES

Engine brand	Caterpillar
Engine model	C7.1
EPA	✓
Air conditioning	✓
Erops cabin	✓
Blade	6-way blade
Width of the blade	3.98m
Steering	Differential steering
Ripper or valve	Ripper valve
Width of the pads	840mm
Draw bar	✓
New ripper available, ask for quotation	✓
Overall condition	In very good and clean condition.

DOCUMENTS

Parts book	✓
Operation manual	✓

GENERAL APPEARANCE

Stamped serial number checked	Yes
Serial number plate checked	Yes
Paint	★★★★★★
Decals	★★★★★★
Bonnet	★★★★★★
Engine cover doors	★★★★★★
Chassis	★★★★★★
Grab irons	★★★★★★
Cabin	★★★★★★
Belly plate	★★★★★★
Pre-cleaner bowl	★★★★★★

ENGINE DETAILS AND CONDITION

Engine number	D8T11428
Arrangement number	394-2664
EPA sticker available	Yes

Air cleaner	Clean
Anti-freeze level °C	-32°C
Diesel anti-freeze added	Yes
Diesel level ok	Yes
Cooling liquid level ok	Yes
Engine oil level ok	Yes
Exhaust manifold	★★★★★
Muffler	★★★★★
Exhaust stack	★★★★★
Engine supports	★★★★★
Hoses	★★★★★
Good cold start	Yes
Engine power	★★★★★
Blow by	★★★★★
Knocking	No
Compression in the radiator	No
Water in the oil	No
Oil in the water	No
Smoke	Normal
Engine leaks	No
Belts and pulleys	★★★★★
Fan	★★★★★
Radiator	★★★★★

UNDERCARRIAGE LEFT IN LIFE IN %

Overall condition	60%
Chains	50%
Bushings	50%
Sprockets	90%
Idlers	70%
Bottom rollers	30%
Top rollers	50%
Track pads	60%

OPERATOR STATION

Hourmeter	Working, hours certified by Caterpillar
Air conditioning	Working
Heater	Working
Gauges	Working

Switches	★★★★★
Display	★★★★★
Warning	No Warnings Available
Cabin glass	Not broken
Windshield wipers	Working
Interior lights	Working
Cabin floor	★★★★★
Interior roof	★★★★★
Seat	★★★★★
Door lock	Working

STEERING

Steering operating condition	★★★★★
------------------------------	-------

FRAME AND BLADE

Moldboard skin	★★★★★
Cutting edge	★★★★★
Play dozer frame	★★★★★
Play blade pin	★★★★★
Play push arms	★★★★★
Play lift cylinder	★★★★★
Lift cylinders leaking	No
Play tilt cylinder	★★★☆☆
Tilt cylinder leaking	No
Play angle cylinders	★★★★★
Angle cylinders leaking	No
Play equaliser bar	★★★★★
Cracks or welds	No

HYDRAULICS

Hydraulic oil level ok	Yes
Hydraulic lines and fittings	★★★★★
Hydraulic tank/sight glass and cap	★★★★★
Hydraulic valves leaking	No
Noise hydraulic pump normal	Yes
Operating condition hydraulics	★★★★★

BRAKE

Service brake operation	★★★★★
Parking brake operation	★★★★★

DRIVE TRAIN/TRANSMISSION

Transmission fully operational in all gears forward and reverse	Yes
Transmission oil level ok	Yes
Transmission noisy	No
Oil level left final drive ok	Yes
Oil level right final drive ok	Yes
Drive chain leaks	No

ELECTRICAL, STARTING AND CHARGING SYSTEM

Alternator functioning	Yes
Wiring	★★★★★
Batteries	★★★★★
Starter	★★★★★
Cabin lights working	Yes
Additional work lights working	Yes

SAFETY ITEMS

Backup alarm	Working
Backup camera	Working
Seat belt	Available
Horn	Working
Beacon	Not Working

New/Excellent
★★★★★

Very good
★★★★★

Good
★★★★★

Fair
★★★★★

Poor
★★★★★

