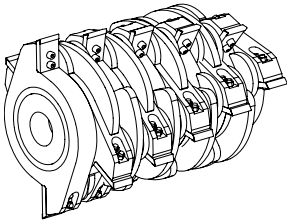
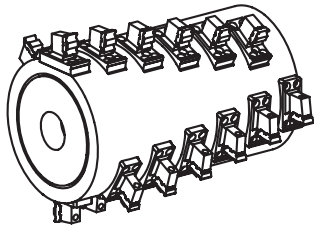


CBI's newly designed split hog box provides the option of switching between chipper and grinding rotors in less than a day -- the ULTIMATE in versatility.

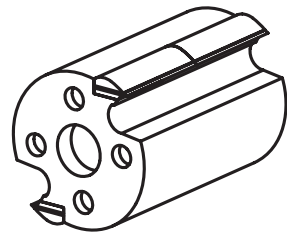
Rotor Options:



**Solid Steel Rotor** with optional Brute Package and bolt-on strikers. Perfect for contaminated C&D, railroad ties, telephone poles, etc.



**Forged Steel Rotor**, with bolt-on hammers and tips, is designed for yard waste, stumps, and logs.



Dynamically balanced, high strength **Chipper Drum** provides custom-sized chips with virtually no overs.



**Continental Biomass Industries, Inc.**  
World's Best Stationary and Portable Material Recovery Systems  
22 Whittier Street, Newton, NH 03858  
Phone: 603-382-0556 Fax: 603-382-0557  
Web: cbi-inc.com Email: info@cbi-inc.com

© Copyright 2003-2006 Continental Biomass Industries, Inc.  
The CBI Logo is a registered trademark, and IntelliGrind and Replace-A-Face are trademarks of Continental Biomass Industries, Inc.  
All other trademarks are the property of their respective owners. All specifications are subject to change without notice.  
060315/OEMM/5.0M



Magnum Force Series  
Horizontal Hog

8400



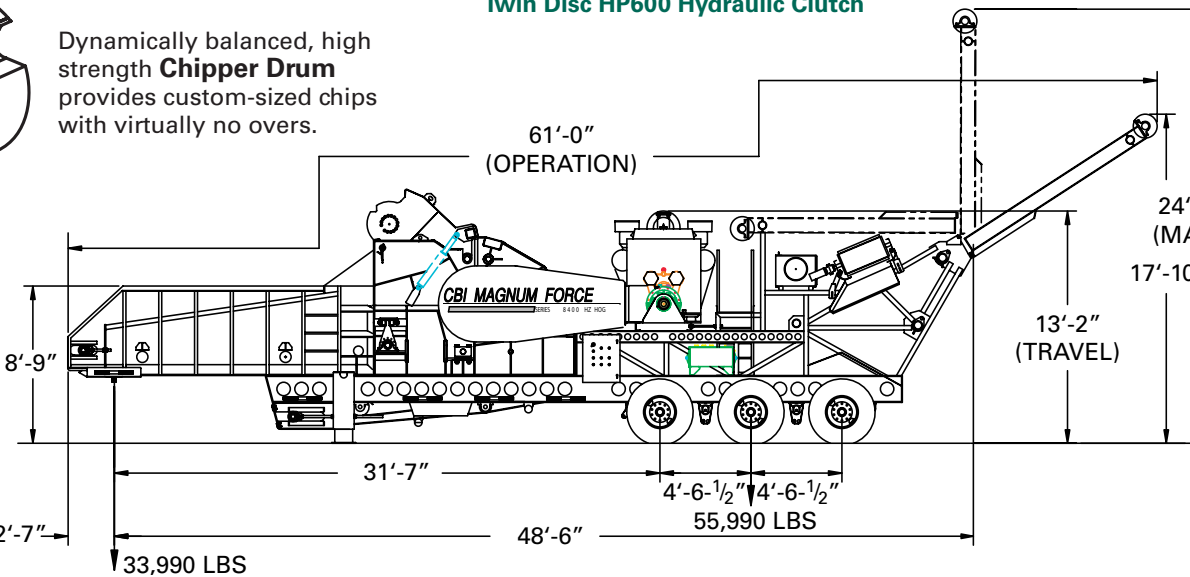
European Chassis Shown

Specifications

<b>Overall</b>			
Length	48' 6" travel, 61' 0" operation		
Height	13' 2"		
Width	10' 10"		
Weight	89,000 – 97,000 pounds		
<b>Feed Conveyor</b>			
Length	16'		
Width	60"		
<b>Rotor</b>			
	<b>Forged</b>	<b>Solid Steel</b>	<b>Chipper</b>
Length	60"	60"	60"
Diameter	50"	50"	48"
Wall thickness	4"	N/A	2"
Strikers	24	20	N/A
Hammer weight	57 lbs, ea.	N/A	N/A
Tips, reversible	5 lbs, ea.	25 lbs, ea.	N/A
Knife weight	N/A	N/A	65 lbs
Weight	12,500 lbs	19,000 lbs	10,700 lbs
<b>Discharge Conveyor</b>			
Length	50' 0"		
Width	60"		
Discharge height	17'		
<b>Throughput</b>			
up to 200 tons/hour			
<b>Power</b>			
CAT 3412E, 1050 HP (CAT C27 and C32 available in 2006 deliver up to 1300 HP)			
<b>Drive</b>			
V-belt complete; 12-14-groove, 8-V, with guard			
<b>Fuel Tank</b>			
380 gallons			
<b>Electrical</b>			
Radio remote control for all functions, with full, independent mechanical backup; 3 E-stops placed around machine			

Options

Magnetic Head Pulley  
Overband Magnet  
Twin Disc HP600 Hydraulic Clutch



Distributed by:

Features

- Lowest operating cost — <\$1.00/ton
- Highest throughput — up to 200 tons/hour
- Choice of three rotor configurations
  - solid steel for contaminated waste,
  - forged steel for logs and yard waste,
  - chipper drum for high quality chips
- IntelliGrind feed and communications technology
- Full radio remote control
- Built-in pre-screener for by-pass of abrasive fines
- Shear pin protection

Description

The Magnum Force Series 8400 Horizontal Hog is the undisputed world champion of extreme duty portable Hogs. Featuring an exceptionally strong yet light chassis, and the option of three application-specific rotor packages, the 8400 delivers both the rugged durability needed for processing metal and aggregate contaminated waste, and unrivaled portability in over-the-road transport. The 8400 grinds full-length trees, stumps and brush, yard waste, contaminated C&D, telephone poles and railroad ties at an unbeatable throughput rate of up to 200 tons/hour. As with all CBI products, every feature and component is designed for the longest wear life, easiest maintenance, and lowest cost of operation available.

Trailer Frame

The trailer frame features a wide flange and tubular lattice structure for high rigidity and strength while greatly reducing weight. The tri-axle features a Hutchens H9700-50 suspension and a 9' 6" tire spread. Six super-single wheels with Michelin 425-65R22.5 tires provide a smooth, reliable ride, and good flotation on the job site; and, because debris can't be trapped — as often happens in the space between dual tires — there's significantly less chance of blowouts. Two front stabilizers with 5" cylinders provide the necessary stabilization and leveling flexibility for any site. A European version is also available.

Feed Conveyor

The 16' long x 60" wide feed conveyor has a fluted (funneling) high troughing design, which aids in continuous feed to the hog chamber. Its open-ended design and extra large capacity simplifies feeding full-length materials or large material surges. A dual, upper and lower feed roll system powered by two heavy-duty planetary and high-torque motors provides continuous, positive feed for large, bulky materials such as whole trees, logs, telephone poles, stumps, or railroad ties. The upper roller crush force is adjustable by radio control. The entire feed system is load regulated.

Hog Chamber, Rotor, and Anvil

The hog chamber is a heavy-duty reinforced housing with 100% continuous welds, providing maximum corrosion resistance and the ultimate in rigidity and strength. Bolt-in Hardox 400 wear liners simplify maintenance. A choice of three application-specific downturn rotor designs is available:

A 48" diameter, 4" thick high-strength **forged steel rotor** with bolt-on hammers and tips is designed for yard waste, stumps, and logs. Each of the 24 hammers is bolted to machined pockets in the rotor core. Reversible tips are bolted to the hammer resulting in extremely rugged construction designed for long life and easy maintenance. CBI's new Replace-A-Face™ hammer system allows the operator to swap out the face independent of the rest of the hammer for quick, easy, and inexpensive repairs.

At 19,000 pounds, CBI's **solid steel, segmented, rotor** is perfect for contaminated materials like C&D, railroad ties, telephone poles, and sawmill cleanup. The patented offset helix rotor design cuts from right-to-left and left-to-right at half the RPM of a conventional hammermill, resulting in far less wear and maintenance, and greater tolerance to rock, dirt, and metal. Bolt-on strikers add to the ease of maintenance.

The dynamically balanced, high strength **chipper drum** is 48" in diameter, 60" long, and has two rows of paired 30" knives. Unique design features include a shear pin protected chip breaking grate which guarantees uniform chip size with virtually no overs, and an adjustable, reversible anvil allows the operator to customize chip size while assuring maximum service life.

All 8400 rotors operate at between 700 and 1100 RPM for optimum throughput while providing the highest possible tolerance to different feed stock and reducing wear. Extra thick shear pin protected screens, grates, and anvil are long wearing and fabricated to avoid catastrophic



*The 8400 is built without a single compromise to be what other Grinders are not –*

- Dependable
- Service Friendly
- Forgiving
- Productive
- Flexible
- Tolerant

*— and a damn good investment!*

damage. The double-step anvil provides superior grinding action with two breaking surfaces and the linebored bearing housing is specially designed to absorb the shock and stresses of grinding contaminated material. A built-in screener allows abrasive fines to bypass the hog, further extending component wear life.

#### Discharge Conveyor

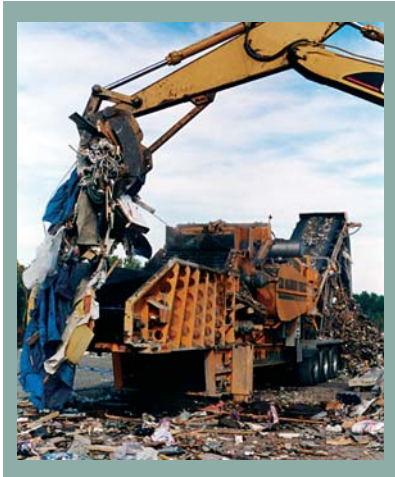
The single catenary discharge conveyor is 60" wide, and features a 220, 2-ply cleated, heavy-duty belt. It is driven by a direct-coupled hydraulic drive. There is no opportunity for material to bridge under the rotor, and with no transition point, spillage and cleanup is eliminated. With the optional crossbelt magnet, the extra width allows for system performance at maximum efficiency. The upper section of the conveyor is hydraulically folded for travel.

#### Power Unit

The power unit is a Caterpillar 3412E diesel, rated at 1050 HP. (Starting in 2006, CAT C27 and C32 engines will provide up to 1300 HP.) It features electric start, is turbocharged and after-cooled. A Twin Disc® Model 318 extra heavy-duty PTO clutch with outboard support bearing provides the power take-off/drive to the rotor. Access to the engine from both sides simplifies maintenance. Additional features include an extra long rubber grommetted Copper Core radiator for dusty operation, Donaldson Air Filtering System with Turbo Two Pre-Cleaners, 8" Critical Silencer, dual battery, 24 volt DC electrical system, emergency shutdown, and all-weather control enclosures.

#### Hydraulics/Paint/Misc.

Pressure and flow compensated hydraulic pumps are used, which generate less heat, and less component stress, while prolonging equipment life. Single function fusing and wiring, with terminal blocks, is well-routed in harnessed cables, extending component life, simplifying maintenance, and providing a better overall appearance. Each subassembly is sandblasted, epoxy primed, and painted completely before final assembly, using CBI's extended life painting process, resulting in enhanced corrosion resistance, better appearance, and better resale value.



Double-step anvil provides two breaking surfaces.

Dual upper-lower feed roller system powered by two heavy duty planetary and high torque motors.

Upper feed roller crush force is adjustable by remote control.

Flexxaire Reversible Fan (far side)

Wide discharge conveyor for high volume throughput.

Treats contaminated C&D at an unbeatable throughput rate.

Extra-thick, shear pin protected screens and grates.

**NEW!!**  
for 2006



The 8400-T, the biggest, toughest track grinder ever built.



Super single wheels feature Michelin tires, provide high on-site flotation and no trapped debris or blowouts.

#### IntelliGrind The Latest in Smart Grinding Technology

The IntelliGrind Variable Feed System automatically sets and adjusts feed speed and top feed-roll position based on engine load, maximizing throughput and performance no matter what the material being processed. IntelliGrind Modem Communication Systems use proven cellular technology\*, connecting your unit to the CBI command center and allowing service technicians to provide real-time system diagnostics, performance measurement, operating program adjustments, instant analysis and response. Alerts are issued when engine oil or hydraulic

filters require changing, and when high pressure, fluid temperatures, or low fluid levels create operating conditions that could cause potential damage. Added to this is the capability to make on-line changes to the system's operating program, allowing CBI to optimize your results in the field.

\*Service not available in all areas.  
Speed and uninterrupted use of the service is not guaranteed.



Processes railroad ties, telephone poles, and other highly contaminated materials without missing a beat.

## The ULTIMATE in DURABILITY...FLEXIBILITY...VERSATILITY

#### Versatility In the Field



Logs & stumps to mulch



Yard waste to compost



Construction wood to high quality fuel



Railroad ties to hog fuel