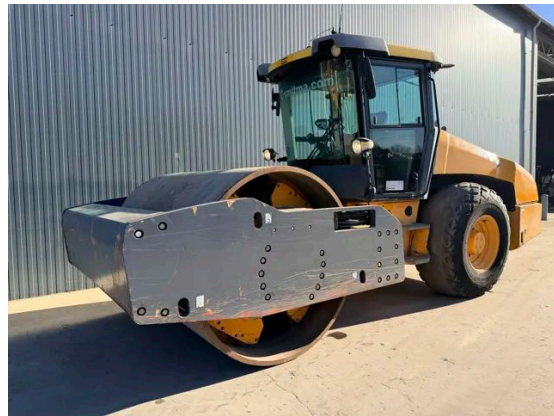


INSPECTION REPORT

DYNAPAC CA6000D

The Dynapac CA6000D is a highly capable self-propelled roller, powered by a robust Deutz TCD 2012 L06 2V engine with 150 kW of power. It features an EROPS cabin, air conditioning, a speed meter, and a backup alarm. The machine has genuine operational hours, making it a reliable choice for heavy-duty applications. It is in very good and clean condition, showcasing its durable build and consistent maintenance.



Specifications

Year	2012
Hours	6962
Weight	19.810 kg
Serial number	10000135L0A010094
Reference	210753

Features

Engine brand	Deutz
Engine model	TCD 2012 L06 2V
Engine power in kW	150kW
Tyre size	23.1-26
Speed meter	✓
Beacon	✓
Hours	Genuine hours
Overall condition	In very good and clean condition.

Documents

Parts book	✓
Operation manual	✓

General Appearance

Serial number plate checked	Yes
Paint	★★★★★
Decals	★★★★★
Bonnet	★★★★★
Chassis	★★★★★
Steps/ladders	★★★★★
Cabin	★★★★★

Engine Details And Condition

Engine number	11248488
Air cleaner	Clean
Anti-freeze level °C	-23
Diesel anti-freeze added	Yes
Diesel level ok	Yes
Cooling liquid level ok	Yes
Engine oil level ok	Yes
Exhaust manifold	★★★★★
Exhaust stack	★★★★★
Hoses	★★★★★
Good cold start	Yes
Engine power	★★★★★
Blow by	★★★★★
Knocking	No
Compression in the radiator	No
Water in the oil	No
Oil in the water	No
Smoke	Normal
Engine leaks	No
Belts and pulleys	★★★★★
Fan	★★★★★
Radiator	★★★★★

Safety Items

Backup alarm	Working
Seat belt	Available
Horn	Working
Parking brake	Working
Beacon	Working

Operator Station

Hourmeter	Working
Air conditioning	Working
Heater	Working
Gauges	Working
Switches	★★★★★
Display	★★★★★
Warnings	No warnings available
Mirrors	Not broken
Cabin glass	Not broken
Windshield wipers	Working
Interior lights	Working
Cabin floor	★★★★★
Interior roof	★★★★★
Seat	★★★★★

Drum

Vibratory system	★★★★☆
Drum surface	★★★★☆
Rubber mounts	★★★★☆
Leakages	No
Drum oil level ok	Yes
Vibration	High and low vibration frequency working
Drum measured in mm	42mm

Steering

Articulate cylinder leaking	No
Play articulate cylinder	★★★★☆
Play articulating point	★★★★☆

Hydraulics

Hydraulic oil level ok	Yes
Hydraulic lines and fittings	★★★★☆
Hydraulic tank/sight glass and cap	★★★★☆
Noise hydraulic pump normal	Yes
Operating condition hydraulics	★★★★☆

Drive Chain

Oil level rear axle ok	Yes
Rear axle leakages	No
Wheel bolts and rims	★★★★☆
Travel motors	★★★★☆
Oil level left final drive ok	Yes
Left final drive leaking	No
Oil level right final drive ok	Yes
Right final drive leaking	No

Electrical, Starting And Charging System

Alternator functioning	Yes
Wiring	★★★★☆
Batteries	★★★★☆
Starter	★★★★☆
Cabin lights working	Yes
Tail lights working	Yes
Additional work lights working	Few lights don't work


Tyres


Rear Left Tyres

Tread dept in mm	5
Percentage life remaining	40%
Retreaded	No

Rear Right Tyres

Tread dept in mm	8
Percentage life remaining	50%
Retreaded	No

 [+31 \(0\) 77 3999 840](tel:+31(0)773999840)

 sales@smitma.com

 [+31 \(0\) 77 3999 840](tel:+31(0)773999840)