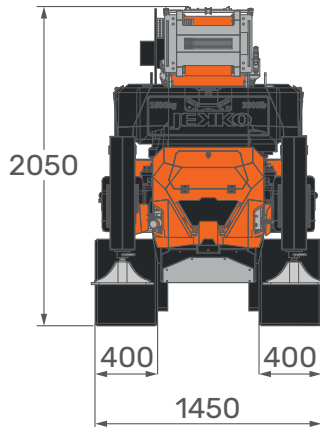
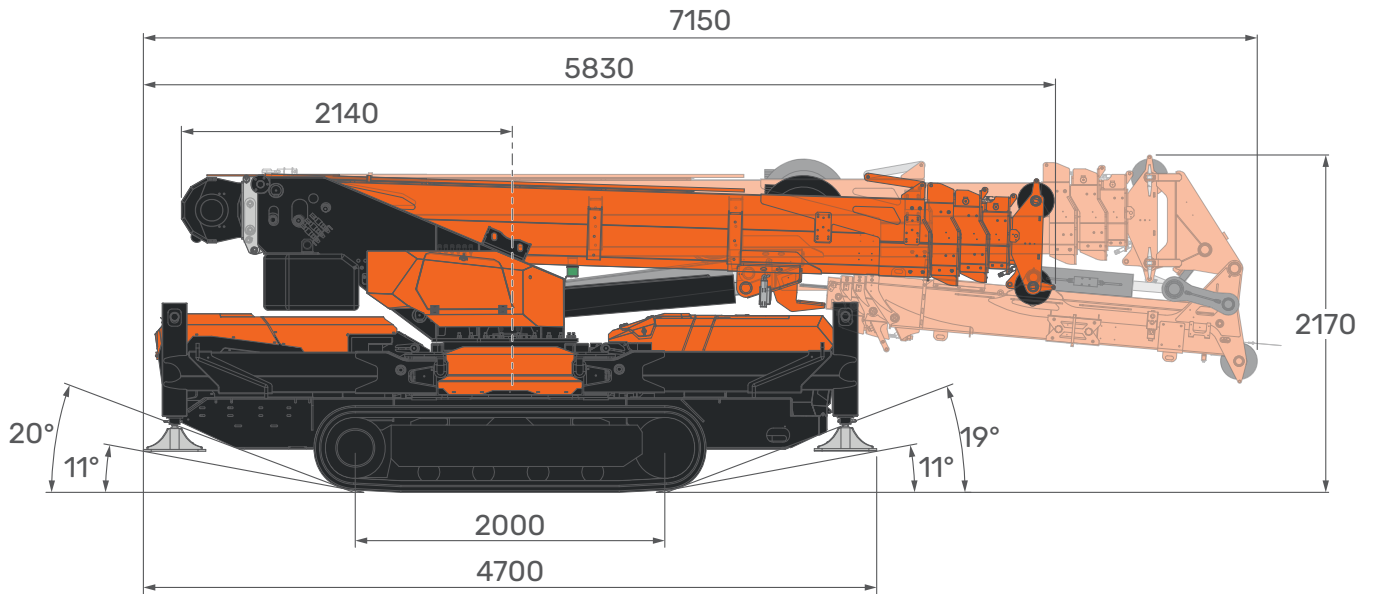


SPX1280 CDH-3B

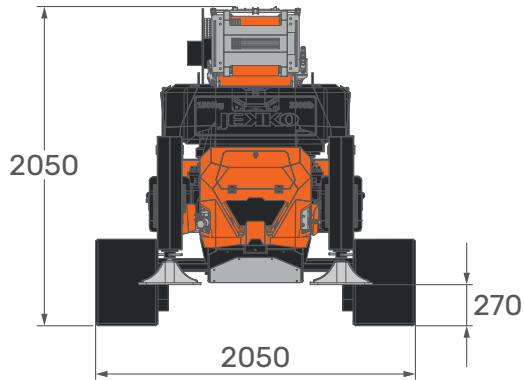
14.03.2025 | REV3.0

Overall dimensions

OVERALL DIMENSIONS



**CLOSED
TRACKS**



**EXTENDED
TRACKS**

OVERALL INFORMATIONS

CRANE INFO



	DESCRIPTION	U.M.	VALUE
OVERALL DIMENSIONS	Height	mm	2.050
	Length		5.830
	Width		1.450
BOOM	Length	m	4,9/17,7
	Speed	s	72 (4,9/17,7 m)
SLEWING	Angle	°	360°
	Speed	rpm	1
LIFTING	Working Angle	°	0°/80°
	Speed	s	30 (0°/50°)
MAX CAPACITY		kg	8.000
MAX OUTRIGGERS LOAD		kg	6.800 ^[1]
TRACK LOAD		kg/cm ²	0,72
TRAVEL SPEED	Slow	km/h	1,3
	Fast		2,8
MAX GRADEABILITY		°	15°(26%)
WORKING TEMPERATURE		°C	-10°/+40°
SOUND EMISSIONS		dB	100
MAX WIND SPEED IN WORKING CONDITIONS		m/s	13,8
Lifting Class (UNI 4301-1)		A1	

^[1]: Static Lifting

SPX1280 CDH-3B

14.03.2025 | REV3.0

Overall informations

WEIGHT



CRANE	Standard Configuration	kg	7.100 ^{[1][2]}
COUNTERWEIGHT	Optional	kg	1.500
HOOKBLOCK	2 ton single line hook	kg	42
	3.2T-D10		35
	8.5T-D10		65

ACCESSORIES



JIB	3502GX	kg	70
	1502.1FL		265
	1502.3HX		675
	500GR		270
HYDRAULIC ACTIVATION	HA-SPX1280	kg	40
	HA-JIB1502.3HX		20
WINTER KIT	WUK-04	kg	3
POWERPACK	3-Phase Electric Motor Pump	kg	140
OUTRIGGERS MATS	OM500.1 (x4)	kg	92

^[1]: Dry weight

^[2]: Estimated fluids weight = 150 kg

ENGINE		Power Supply		Diesel		
		ENGINE	Power	kW	18,5	
			HP	25		
Tank Capacity	L	35				

POWERPACK		POWER SUPPLY		PP400-11D.V06 (CE)		3 PH + N + PE		
				PP220-11D.V07 (UL-CSA)		3 PH + PE		
		3-PHASE KIT	PP400-11D.V06 (CE)		Voltage	V	400	
					Frequency	Hz	50	
					Motor Power	kW	11	
			PP220-11D.V07 (UL-CSA)		Voltage	V	220	
					Frequency	Hz	60	
					Motor Power	kW	11	
		CHARGER	PP400-11D.V06 (CE)		Charge	V	12	
						Ah	25	
PP220-11D.V07 (UL-CSA)			Charge	V	12			
				Ah	25			

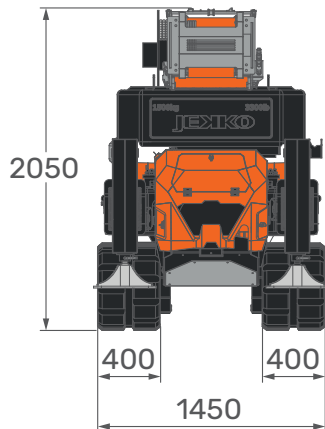
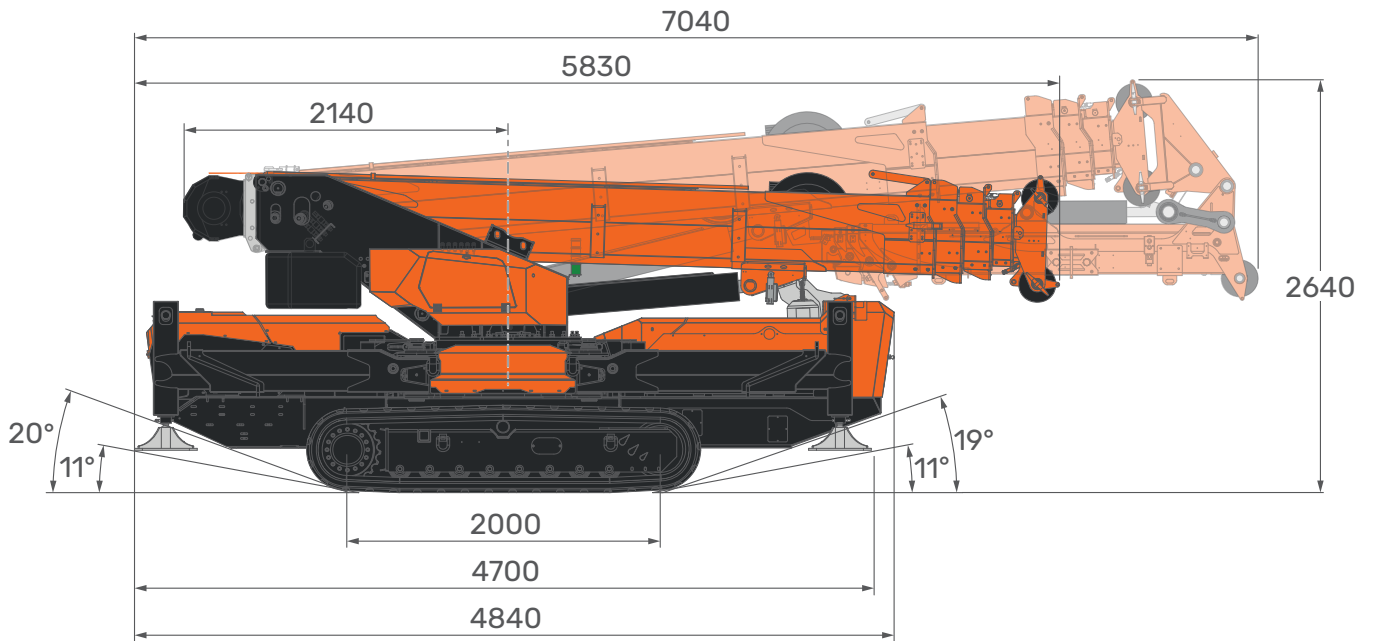
HYDRAULIC SYSTEM		MAX WORKING PRESSURE		bar	230		
		TANK CAPACITY		L	100		
		HYDRAULIC SYSTEM CAPACITY		L	180		
		OIL	OIL-1280		Biodegradable	ISO VG46	
			ARTIC-OIL-1280		Mineral	ISO VG46	
		MAIN PUMP	Variable Displacement		cm ³ /rev	45	
Max Oil Flow			L/min	95			

SPX1280 CL-3

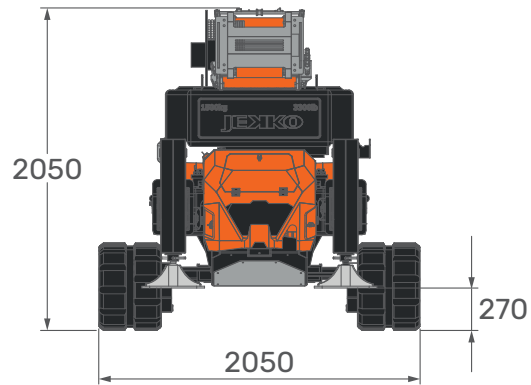
14.03.2025 | REV3.0

Overall dimensions

OVERALL DIMENSIONS



CLOSED TRACKS



EXTENDED TRACKS

OVERALL INFORMATIONS

CRANE INFO



	DESCRIPTION	U.M.	VALUE
OVERALL DIMENSIONS	Height	mm	2.050
	Length		5.830
	Width		1.450
BOOM	Length	m	4,9/17,7
	Speed	s	62 (4,9/17,7 m)
SLEWING	Angle	°	360°
	Speed	rpm	1
LIFTING	Working Angle	°	0°/80°
	Speed	s	35 (0°/50°)
MAX CAPACITY		kg	8.000
MAX OUTRIGGERS MAX LOAD		kg	7.500 ^[1]
TRACK LOAD		kg/cm ²	0,79
TRAVEL SPEED	Slow	km/h	1,3
	Fast		2,8
MAX GRADEABILITY		°	15°(26%)
WORKING TEMPERATURE		°C	-10°/+40°
MAX WIND SPEED IN WORKING CONDITIONS		m/s	13,8
Lifting Class (UNI 4301-1)			A1

^[1]: Static lifting

SPX1280 CL-3

14.03.2025 | REV3.0

Overall informations

WEIGHT



CRANE	Standard Configuration	kg	7.900 ^{[1][2]}
COUNTERWEIGHT	Optional	kg	1.500
HOOKBLOCK	2 ton single line hook	kg	42
	3.2T-D10		35
	8.5T-D10		109

ACCESSORIES



JIB	3502GX	kg	70
	1502.1FL		265
	1502.3HX		675
	500GR		270
HYDRAULIC ACTIVATION	HA-SPX1280	kg	40
	HA-JIB1502.3HX		20
WINTER KIT	WUK-04	kg	3
OUTRIGGERS MATS	OM500.1 (x4)	kg	92

^[1]: Dry weight

^[2]: Estimated fluids weight = 150 kg

MOTOR		ELECTRIC MOTORIZATION	Power Supply		Lithium Battery	
			Battery Voltage	V	96	
			Battery Capacity	Ah	400	
			Motor Power	kW	20	

ELECTRICAL SYSTEM		POWER SUPPLY	CE	1 PH + N + PE		
				3 PH + N + PE		
			UL-CSA	1x 1 PH (110/230V) + N + PE		
				2x 1 PH (110/230V) + N + PE		
				3x 1 PH (110/230V) + N + PE		

BATTERY CHARGER		CE	1 PH + N + PE	Charge	V	96	
					Ah	25	
			3 PH + N + PE	Charge	V	96	
					Ah	75	
			UL-CSA	1x 1 PH (110/230V) + N + PE	Charge	V	96
						Ah	25
		2x 1 PH (110/230V) + N + PE		Charge	V	96	
					Ah	50	
		3x 1 PH (110/230V) + N + PE	Charge	V	96		
				Ah	75		

HYDRAULIC SYSTEM		MAX WORKING PRESSURE		bar	230	
		TANK CAPACITY		L	100	
		HYDRAULIC SYSTEM CAPACITY		L	180	
		OIL	OIL-1280		Biodegradable	ISO VG46
			ARTIC-OIL-1280		Mineral	ISO VG46
		PUMP	Displacement		cm ³ /rev	38
			Max Oil Flow		L/min	65