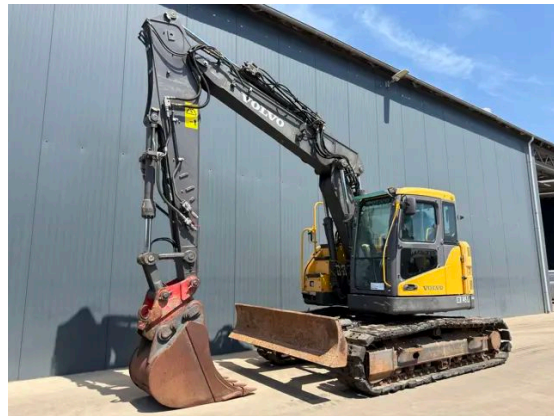


INSPECTION REPORT

VOLVO ECR145CL VA

The Volvo ECR145CL VA excavator is a premium-grade machine built in 2010. It features a powerful Volvo D4E engine producing 80kW. Equipped with EPA and CE certifications, it ensures quality and compliance. This model includes air conditioning, an immobilizer, and a versatile V/A boom. The 3.00m stick length and hydraulic quick release enhance performance. It comes with a digging bucket with teeth 0.80m wide, piped for hammer, shear, and clamp. Burst valves on the lift and V/A cylinder, an AM/FM radio, and genuine hours of operation contribute to its excellent and clean condition, making it suitable for heavy-duty applications.



Specifications

Year	2010
Hours	6891
Weight	14960
Serial number	VCECR145T00110298
Reference	213392

Features

Engine brand and model	Volvo D4E
Engine power in kW	80kW
EPA	EPA
CE	✓
Air conditioning	✓
Boom	V/A boom
Length of the stick	3.00m
Bucket	Digging bucket with teeth
Width of the bucket	0.80m
Piped	Piped for hammer, shear and clamp
AM/FM Radio	✓
Hours	Genuine hours
Overall condition	In very good and clean condition.

Documents

Parts book	✓
Operation manual	✓

General Appearance

Stamped serial number checked	Yes
Serial number plate checked	Yes
Code immobilizer	1889
Paint	★★★★★
Body work	★★★★★
Decals	★★★★★
Bonnet	★★★★★
Engine cover doors	★★★★★
Chassis	★★★★★
Bottom plates	★★★★★
Counter weight	★★★★★
Toolbox	★★★★★
Steps/ladders	★★★★★
Grab irons	★★★★★
Cabin	★★★★★
Cracks or welds	No

Engine Details And Condition

Engine number	10705528
EPA sticker available	Yes
Air cleaner	Clean
Anti-freeze level °C	-32°C
Diesel anti-freeze added	Yes
Diesel level ok	Yes
Cooling liquid level ok	Yes
Engine oil level ok	Yes
Exhaust manifold	★★★★★
Muffler	★★★★★
Exhaust stack	★★★★★
Engine supports	★★★★★
Hoses	★★★★★
Good cold start	Yes
Engine power	★★★★★
Blow by	★★★★★
Knocking	No
Compression in the radiator	No
Water in the oil	No
Oil in the water	No
Smoke	Normal
Engine leaks	No
Belts and pulleys	★★★★★
Fan	★★★★★
Radiator	★★★★★

Bucket

Overall condition of the bucket	★★★★★
Bottom	★★★★★
Sides	★★★★★
Teeth	★★★★★

Undercarriage Left In Life In %

Overall condition	65%
Chains	80%
Bushings	70%
Sprockets	30%
Idlers	70%
Bottom rollers	80%
Top rollers	80%
Track pads	30%

Safety Items

Seat belt	Available
Horn	Working

Operator Station

Hourmeter	Working
Air conditioning	Working
Heater	Working
Gauges	Working
Switches	★★★★★
Display	★★★★★
Warning	No warnings available
Mirrors	Not broken
Cabin glass	Small crack, no need to repair
Cabin floor	★★★★★
Interior roof	★★★★★
Seat	★★★★★

Hydraulics

Hydraulic oil level ok	Yes
Hydraulic lines and fittings	★★★★★
Hydraulic tank/sight glass and cap	★★★★★
Travel motors	★★★★★
High and low travel speed working	Working
Oil level left final drive ok	Yes
Left final drive leaking	No
Oil level right final drive ok	Yes
Right final drive leaking	No
Hydraulic valves leaking	No
Noise hydraulic pump normal	Yes
Operating condition hydraulics	★★★★★

Boom And Stick

Play lift cylinder	★★★★★
Lift cylinders leaking	No
Play V/A boom pins	★★★★★
Play V/A cylinder	★★★★★
V/A cylinder leaking	No
Play stick cylinder	★★★★★
Stick cylinder leaking	No
Play stick pen	★★★★★
Play bucket cylinder	★★★★★
Bucket cylinder leaking	No
Play bucket link	★★★★★
Play bucket pen	★★★★★
Condition V/A boom	★★★★★

Swing Circle

Play on the swing bearing	★★★★★
Swing gear	★★★★★
Swing drive oil level ok	Yes
Swing drive leaking	No
Swing brake operating	Yes
Swing noise normal	Yes
Hydraulic swivel leaking	No
Operating condition	★★★★★

Electrical, Starting And Charging System

Alternator functioning	Yes
Wiring	★★★★★
Batteries	★★★★★
Starter	★★★★★
Cabin lights working	Yes
Additional work lights working	Few lights don't work



+31 (0) 77 3999 840



sales@smitma.com



+31 (0) 77 3999 840