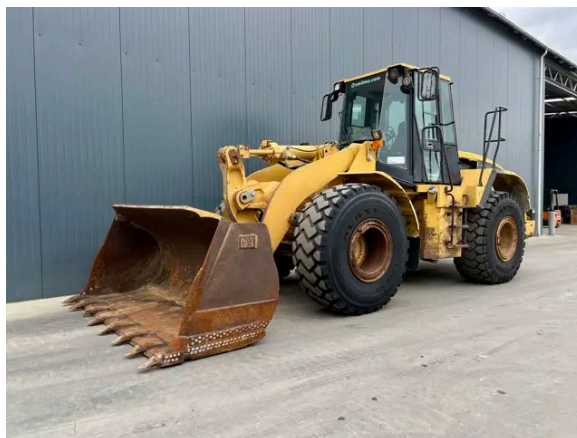


## CATERPILLAR 950G

### Description

Caterpillar 950G, Engine and model Caterpillar 3126DITA, 134 kW, EPA, CE, Air conditioning, Erops cabin, 23.5R25 , GP bucket with teeth, Width of the bucket 2.95m, Complete steering wheel, Ride control, Autoshift, Weight load indicator available but not tested, Hours certified by Caterpillar, Hours checked by Caterpillar - 14242h, In good and fairly clean condition.



Year	1998
Hours	4867
Weight	18.300 kg
Serial number	2JS00323
Reference	208660

[Download photos](#)


CONTACT US:  
SALES@SMITMA.COM  
+31(0)773999840

New/Excellent



Very good



Good



Fair



Poor



# INSPECTION REPORT

## FEATURES

Engine and model	Caterpillar 3126DITA
Engine power	134 kW
EPA	EPA
CE	✓
Erops cabin	✓
Tyre size	23.5R25
Bucket	GP bucket with teeth
Width of the bucket	2.95m
Steering	Complete steering wheel
Ride control	✓
Autoshift	✓
Overall condition	In good and fairly clean condition.

## DOCUMENTS

Parts book	✓
Operation manual	✓

## GENERAL APPEARANCE

Stamped serial number checked	Yes
Serial number plate checked	Yes
Paint	★ ★ ★ ★ ★
Decals	★ ★ ★ ★ ★
Bonnet	★ ★ ★ ★ ★
Steps/ladders	★ ★ ★ ★ ★
Grab irons	★ ★ ★ ★ ★
Cabin	★ ★ ★ ★ ★
Pre-cleaner bowl	★ ★ ★ ★ ★

## ENGINE DETAILS AND CONDITION

Engine number	6JK01759
Arrangement number	116-8670
EPA sticker available	Yes
Air cleaner	Clean
Anti-freeze level °C	-44°C
Diesel anti-freeze added	Yes

Diesel level ok	Yes
Cooling liquid level ok	Yes
Exhaust manifold	★★★★★
Muffler	★★★★★
Exhaust stack	★★★★★
Engine supports	★★★★★
Hoses	★★★★★
Good cold start	Yes
Engine power	★★★★★
Blow by	★★★★★
Knocking	No
Compression in the radiator	No
Water in the oil	No
Oil in the water	No
Smoke	Normal
Engine leaks	No
Belts and pulleys	★★★★★
Fan	★★★★★
Radiator	★★★★★

## OPERATOR STATION

Hourmeter	Working
Air conditioning	Not working
Heater	Working
Gauges	Few don't work
Switches	★★★★★
Display	★★★★★
Warning	No warnings available
Mirrors	Not broken
Cabin glass	Not broken
Windshield wipers	Working
Interior lights	Working
Cabin floor	★★★★★
Interior roof	★★★★★
Seat	★★★★★

## BUCKET

Overall condition of the bucket	★★★★★
Bottom	★★★★★

Sides	★★★★★
Teeth	★★★★★

## FRAME

Play articulation point	★★★★★
Play loading frame	★★★★★
Play bucket pins	★★★★★
Crack or welds	No

## HYDRAULICS

Hydraulic oil level ok	Yes
Hydraulic lines and fittings	★★★★★
Hydraulic tank/sight glass and cap	★★★★★
Hydraulic valves leaking	No
Noise hydraulic pump normal	Yes
Operating condition hydraulics	★★★★★

## BRAKE

Service brake operation	★★★★★
Parking brake operation	★★★★★
Compressor	★★★★★

## DRIVE TRAIN/TRANSMISSION

Transmission fully operational in all gears forward and reverse	Yes
Transmission oil level ok	Yes
Transmission noisy	No
Oil level front axle ok	Yes
Oil level rear axle ok	Yes

## ELECTRICAL, STARTING AND CHARGING SYSTEM

Alternator functioning	Yes
Wiring	★★★★★
Batteries	★★★★★
Starter	★★★★★
Cabin lights working	Few lights don't work
Tail lights working	Few lights don't work
Additional work lights working	Few lights don't work

## SAFETY ITEMS

Seat belt	Available
Horn	Not Working

## TYRES

### FRONT LEFT

Tread dept in mm 28mm

### REAR LEFT

Tread dept in mm 20mm

### REAR RIGHT

Tread dept in mm 30mm

### FRONT RIGHT

Tread dept in mm 32mm

New/Excellent



Very good



Good



Fair



Poor



Copyright Smitma BV