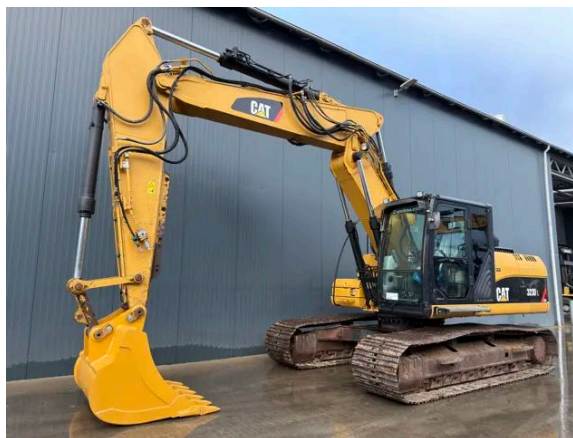


CATERPILLAR 323D L

Description

Caterpillar 323D L, Engine brand and model Caterpillar C6.4, 117 kW, CE, Backup camera, Cat walk, Width of the pads 800mm, V/A boom, Length of the stick 2.90m, New digging bucket with teeth, Width of the bucket 1.40m, Piped for hammer & shear, Burst valve on lift, V/A and stick cylinder, Hours certified by Caterpillar, In very good and very clean condition.



Year	2010
Hours	13264
Weight	25.700 kg
Serial number	CAT0323DVZMF00383
Reference	209963

[Download photos](#)


CONTACT US:
SALES@SMITMA.COM
+31(0)773999840

New/Excellent
★★★★★

Very good
★★★★☆

Good
★★★☆☆

Fair
★★★☆☆

Poor
★★★☆☆

INSPECTION REPORT

FEATURES

Engine brand and model	Caterpillar C6.4
Engine power in kW	117 kW
CE	✓
Cat walk	✓
Width of the pads	800mm
Boom	V/A boom
Length of the stick	2.90m
Bucket	New digging bucket with teeth
Width of the bucket	1.40m
Piped	Piped for hammer & shear
Hours	Hours certified by Caterpillar
Overall condition	In very good and very clean condition.

DOCUMENTS

Parts book	✓
Operation manual	✓

GENERAL APPEARANCE

Stamped serial number checked	Yes
Serial number plate checked	Yes
Paint	★★★★★
Body work	★★★★★
Decals	★★★★★
Bonnet	★★★★★
Engine cover doors	★★★★★
Chassis	★★★★★
Bottom plates	★★★★★
Counter weight	★★★★★
Toolbox	★★★★★
Steps/ladders	★★★★★
Grab irons	★★★★★
Cabin	★★★★★
Pre-cleaner bowl	★★★★★
Cracks or welds	Yes
Note: Stick plate	

ENGINE DETAILS AND CONDITION

Engine number	GDC40259
Arrangement number	287-0120
Air cleaner	Clean
Anti-freeze level °C	-36°C
Diesel anti-freeze added	Yes
Diesel level ok	Yes
Cooling liquid level ok	Yes
Engine oil level ok	Yes
Exhaust manifold	★★★★★
Muffler	★★★★★
Exhaust stack	★★★★★
Engine supports	★★★★★
Hoses	★★★★★
Good cold start	Yes
Engine power	★★★★★
Blow by	★★★★★
Knocking	No
Compression in the radiator	No
Water in the oil	No
Oil in the water	No
Smoke	Normal
Engine leaks	No
Belts and pulleys	★★★★★
Fan	★★★★★
Radiator	★★★★★

BUCKET

Overall condition of the bucket	★★★★★★
Bottom	★★★★★★
Sides	★★★★★★
Teeth	★★★★★★

UNDERCARRIAGE LEFT IN LIFE IN %

Overall condition	60%
Chains	60%
Bushings	80%
Sprockets	40%

Idlers	70%
Bottom rollers	60%
Top rollers	70%
Track pads	50%

SAFETY ITEMS

Backup camera	Working
Seat belt	Available
Horn	Working

OPERATOR STATION

Hourmeter	Working, hours certified by Caterpillar
Air conditioning	Not Working
Heater	Working
Gauges	Working
Switches	★ ★ ★ ★ ★
Display	★ ★ ★ ★ ★
Warning	No warnings available
Mirrors	Not broken
Cabin glass	Not broken
Windshield wipers	Few don't work
Interior lights	Working
Cabin floor	★ ★ ★ ★ ★
Interior roof	★ ★ ★ ★ ★
Seat	★ ★ ★ ★ ★
Door lock	Working

HYDRAULICS

Hydraulic oil level ok	Yes
Hydraulic lines and fittings	★ ★ ★ ★ ★
Hydraulic tank/sight glass and cap	★ ★ ★ ★ ★
Travel motors	★ ★ ★ ★ ★
High and low travel speed working	Working
Oil level left final drive ok	Yes
Left final drive leaking	No
Oil level right final drive ok	Yes
Right final drive leaking	No
Hydraulic valves leaking	No
Noise hydraulic pump normal	Yes

Operating condition hydraulics

★★★★★

BOOM AND STICK

Play lift cylinder	★★★★★
Lift cylinders leaking	No
Play boom pen	★★★★★
Play V/A boom pins	★★★★★
Note: Little play	
Play V/A cylinder	★★★★★
Note: Little play	
V/A cylinder leaking	No
Play stick cylinder	★★★★★
Stick cylinder leaking	No
Play stick pen	★★★★★
Play bucket cylinder	★★★★★
Bucket cylinder leaking	No
Play bucket link	★★★★★
Play bucket pen	★★★★★
Condition V/A boom	★★★★★
Condition stick	★★★★★

SWING CIRCLE

Play on the swing bearing	★★★★★
Swing gear	★★★★★
Swing drive oil level ok	Yes
Swing drive leaking	No
Swing brake operating	Yes
Swing noise normal	Yes
Hydraulic swivel leaking	No
Operating condition	★★★★★

ELECTRICAL, STARTING AND CHARGING SYSTEM

Alternator functioning	Yes
Wiring	★★★★★
Batteries	★★★★★
Starter	★★★★★
Cabin lights working	Yes
Additional work lights working	Few lights don't work

New/Excellent ★★★★★	Very good ★★★★☆	Good ★★★☆☆	Fair ★★★☆☆	Poor ★☆☆☆☆
------------------------	--------------------	---------------	---------------	---------------

Copyright Smilma BV

