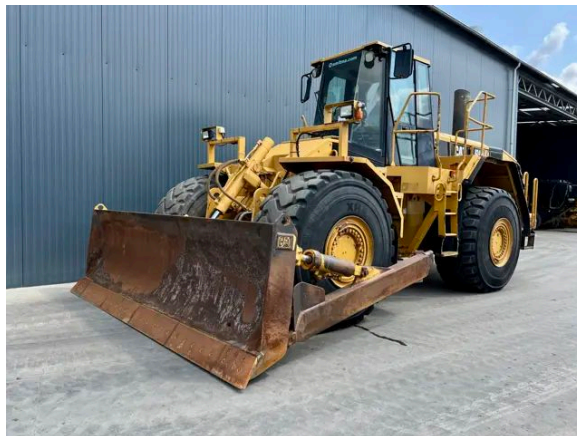


## CATERPILLAR 824H

### Description

Caterpillar 824H, Engine Caterpillar , C15, 264 kW, EPA, CE, Air conditioning, Erops cabin, 29.5R25 Michelin , Width of the blade 4.35m, Complete steering wheel, Autoshift, Backup camera, Backup alarm, Central lubrication, Beacon, AM/FM radio, Hours certified by Caterpillar, In good and clean condition.



Year	2006
Hours	17547
Weight	28.724 kg
Serial number	CAT0824HLASX00232
Reference	206517

[Download photos](#)


CONTACT US:  
SALES@SMITMA.COM  
+31(0)773999840

New/Excellent  
★★★★★

Very good  
★★★★☆

Good  
★★★☆☆

Fair  
★★★☆☆

Poor  
★★★☆☆

# INSPECTION REPORT

## FEATURES

Engine	Caterpillar
Engine model	C15
Engine power	264 kW
EPA	✓
CE	✓

## DOCUMENTS

Parts book	✓
Operation manual	✓

## GENERAL APPEARANCE

Stamped serial number checked	Yes
Serial number plate checked	Yes
Paint	★★★★☆☆
Decals	★★★★★★
Bonnet	★★★★☆☆
Engine cover doors	★★★★☆☆
Chassis	★★★★☆☆
Steps/ladders	★★★★☆☆
Grab irons	★★★★☆☆
Cabin	★★★★☆☆
Pre-cleaner bowl	★★★★☆☆
Toolbox	★★★★☆☆

## ENGINE DETAILS AND CONDITION

Engine number	LHX08403
Arrangement number	225-8923
EPA sticker available	Yes
Air cleaner	Clean
Anti-freeze level °C	-19°C
Diesel anti-freeze added	Yes
Diesel level ok	Yes
Cooling liquid level ok	Yes
Engine oil level ok	Yes
Exhaust manifold	★★★★☆☆

Muffler	★★★★★
Exhaust stack	★★★★★
Engine supports	★★★★★
Hoses	★★★★★
Good cold start	Yes
Engine power	★★★★★
Blow by	★★★★★
Knocking	No
Compression in the radiator	No
Water in the oil	No
Oil in the water	No
Smoke	Normal
Engine leaks	No
Belts and pulleys	★★★★★
Fan	★★★★★
Radiator	★★★★★

## OPERATOR STATION

Hourmeter	Working, hours certified by Caterpillar
Air conditioning	Working
Heater	Working
Gauges	Working
Switches	★★★★★
Display	★★★★★
Warning	No warnings available
Mirrors	Not broken
Cabin glass	Not broken
Windshield wipers	Few don't work
Interior lights	Working
Cabin floor	★★★★★
Interior roof	★★★★★
Seat	★★★★★

## FRAME AND BLADE

Moldboard skin	★★★★★
Cutting edge	★★★★★
Play dozer frame	★★★★★
Play blade pin	★★★★★
Play push arms	★★★★★

Play lift cylinder	★★★★★
Lift cylinders leaking	No
Play tilt cylinder	★★★★★
Tilt cylinder leaking	No
Cracks or welds	No

## HYDRAULICS

Hydraulic oil level ok	Yes
Hydraulic lines and fittings	★★★★★
Hydraulic tank/sight glass and cap	★★★★★
Noise hydraulic pump normal	Yes
Operating condition hydraulics	★★★★★

## BRAKE

Service brake operation	★★★★★
Parking brake operation	★★★★★
Compressor	★★★★★

## DRIVE TRAIN/TRANSMISSION

Transmission fully operational in all gears forward and reverse	Yes
Transmission oil level ok	Yes
Transmission noisy	No
Oil level front axle ok	Yes
Oil level rear axle ok	Yes
Oil level front left final drive ok	Yes
Oil level rear left final drive ok	Yes
Oil level rear right final drive ok	Yes
Oil level front right final drive ok	Yes
Drivetrain leaks	No

## ELECTRICAL, STARTING AND CHARGING SYSTEM

Alternator functioning	Yes
Wiring	★★★★★
Batteries	★★★★★
Starter	★★★★★
Cabin lights working	Yes
Tail lights working	Yes
Additional work lights working	Yes

## SAFETY ITEMS

Backup alarm	Working
Backup camera	Working
Seat belt	Available
Horn	Working
Beacon	Working

## TYRES

### FRONT LEFT

Tread dept in mm	34mm
Percentage life remaining	80%

### REAR LEFT

Tread dept in mm	21mm
Percentage life remaining	50%

### REAR RIGHT

Tread dept in mm	38mm
Percentage life remaining	90%

### FRONT RIGHT

Tread dept in mm	34mm
Percentage life remaining	80%

New/Excellent



Very good



Good



Fair



Poor



Copyright Smitma BV

