



MC 1050-20LF

65' LOW LEVER FEEDER STACKER



A leading manufacturer of screening and conveyor equipment, offer the MC1050-20LF low lever feeder stacking conveyor, ensuring regular & consistent feed the MC1050-20LF is the ideal solution for jobs that require high production stockpiling or material transfer



Heavy Duty Construction

Constructed from 5mm thick MS plate designed in 500mm deep section to give added stability and to withstand the rigours of heavy duty operation.

Feed Hopper

8 cubic metre capacity feed hopper.. Hopper lined with 6mm MS wear plates and hydraulic folding wings.

1050mm wide belt feeder with impact rollers, heavy duty belt and variable speed control. Can be loaded from all three sides.

Discharge Conveyor

The conveyor is constructed in 3 sections , the tail section includes a standard reception hopper and the head section includes the conveyor drive , consisting of 2 Sauer-Danfoss hydraulic motors and rubber lagged drive pulley. The belt width is 1050mm and the overall length of the discharge conveyor is 20m.

Diesel-Hydraulic Power

The conveyor is powered by a Caterpillar Diesel Engine coupled to a triple hydraulic pump giving sufficient oil flow to drive the variable speed belt feeder, the main discharge conveyor and the crawler tracks.

Undercarriage

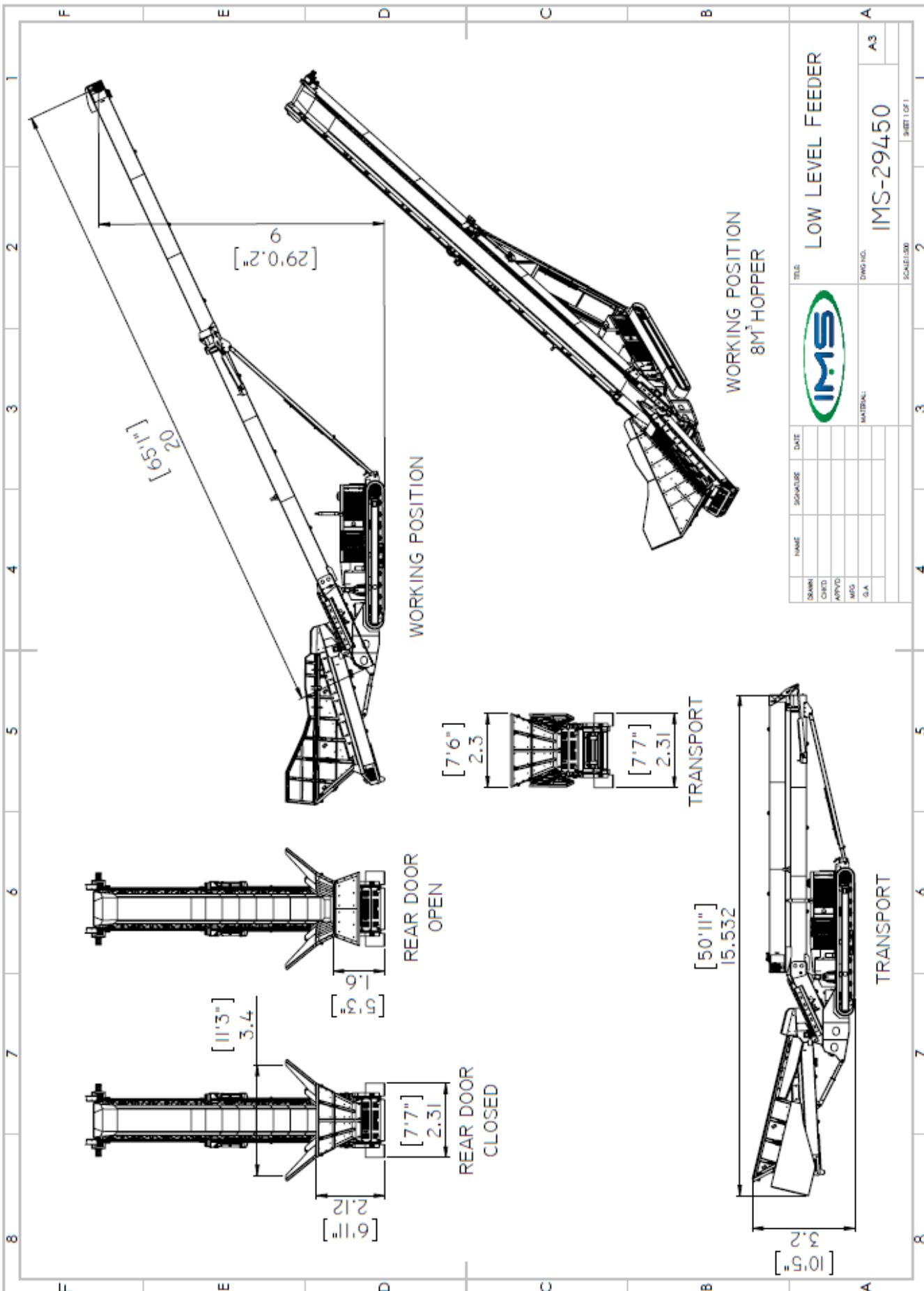
The undercarriage consists of the hydraulically operated crawler tracks together with an adjustable support trestle arrangement, which allows variation in both feed and discharge heights

Hydraulic Folding Mechanism

The folding mechanism of the conveyor head section allows for quick site set up and provides a flexible approach to transport of the unit. The hydraulic folding is designed so that the hydraulic cylinder piston rods are fully protected when the machine is operational

Emergency Stop System

Every MC1050-20LF track Conveyor is equipped from the factory with an emergency stop system that will render the plant inoperable when activated, providing added safety for the operator.



TITLE		LOW LEVEL FEEDER		A3	
DATE		MATERIAL		IMS-29450	
SIGNATURE		DWG NO.		SHEET 1 OF 1	
NAME		SCALE		2	
DESIGN	DATE	SHEET 1 OF 1		2	
CHECK					
APPROV					
MG					
G.A.					





Standard Features

Detachable Feeder to allow for container transport –
Hopper in 20' Container, Conveyor in 40' Container

1050mm (42") wide Feeder and Main Belt

127mm (5") Impact Rollers under Feeder

Mild Steel Replaceable Liner Plates in Hopper as standard

8 cubic metre capacity Feeder Hopper with hydraulic wing plates

Crawler Track Movement

Caterpillar Diesel-Hydraulic Drive

1050mm (42") wide 3 ply belt in both Feeder and Discharge Conveyor

Hydraulic Folding on Head Section

Hydraulic Raise and Lower

Specifications

Operational Length	23.5M (77')
Operational Height	9.M (29")
Loading Height	2.12M (6' 11")
Hydraulic Tank Capacity	600 l (132 Gallon)
Diesel Fuel Capacity	275 l (61 Gallon)
Engine	Caterpillar Liquid Cooled
Engine Power	55kw Stage V/74kW Tier 3

