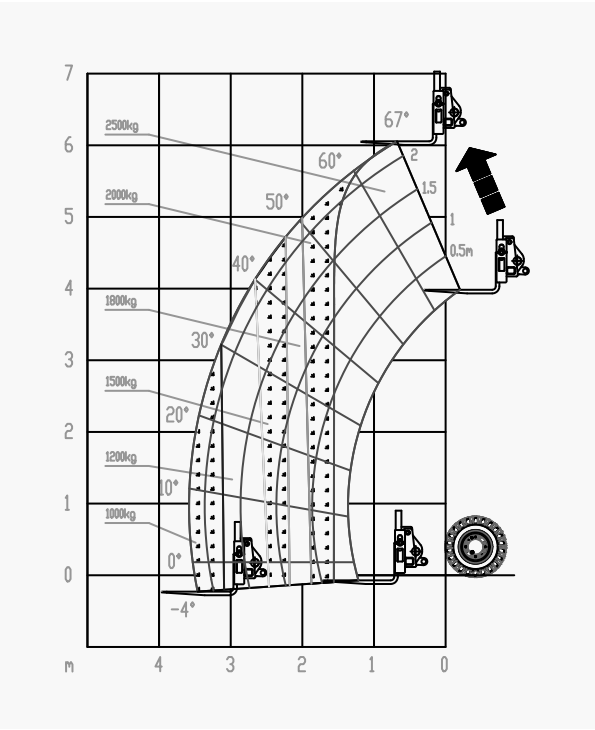
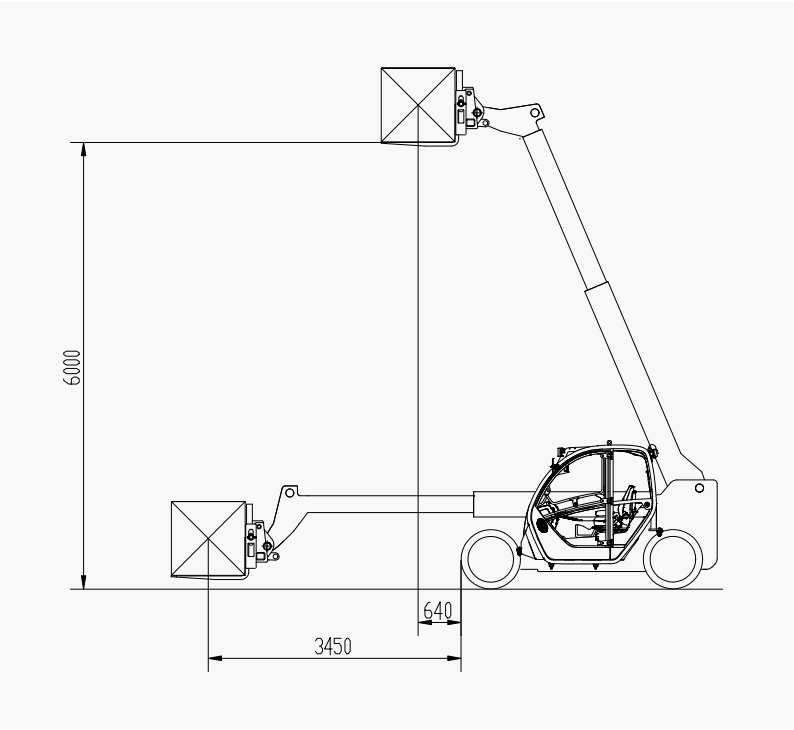


■ Main technical parameters of XC6-2506E telescopic forklift loader

S/N	Item name		Parameter value
1	Rated operating load		2500 kg
2	Operating mass		5360 kg
3	Maximum lifting height (to upper plane of fork)		6000 mm
4	Effective load at the maximum lifting height		2500 kg
5	最大起升高度时的前伸距		640 mm
6	Maximum reach distance (arm level, load center to front end of tire)		3450 mm
7	Effective load at the maximum reach distance		1000 kg
8	Load center distance		500 mm
9	Braking distance		≤5.6 m
10	Minimum ground clearance (frame)		255 mm
11	Wheelbase		2450 mm
12	Tread		1620 mm
13	Minimum turning radius (outer side of tire)		≤3330 mm
14	Work device	Luffing time (rising)	≤9.5 s
		Luffing time (falling)	≤4.2 s
		Second arm stretching-out time	≤8.2 s
		Second arm retracting time	≤4.3 s
		Fork arm carrier forward tiling time	≤3.5 s
		Fork arm carrier backward tiling time	≤2.6 s
15	Telescopic arm luffing angle		-4° ~ 67°
16	Range of inclination angle of fork arm carrier (arm level)		-12° ~ 114°
17	Maximum speed		15.5km/h
18	Battery	Type	Lithium battery
		Voltage	80 V
		Capacity	412 Ah
19	Tire specification		12-16.5
20	Overall dimension of complete machine, mm		Length 4100 × width 1920 × height 1920, mm



■ The main functions are as follows

S/N	Function	Description
1	4WD	Four-wheel drive
2	Three steering modes	Two-wheel, four-wheel or crab steering, flexible driving, small turning radius
3	Locked front axle, floating rear axle	Front axle is fixed on the frame, rear axle can float within the range of ±10°, which ensures the safety and toe place adaptability of the completed machine
4	Torque limiter automatic limiting system	Overload alarm is provided to prevent the arm from acting in more dangerous direction, thus the safety is higher.
5	Ergonomic ROPS and FOPS cab	FOPS and ROPS certified cab;Electric drive handle operating all actions with one hand, air conditioner, ventilation system, and front + right + rear defrosting, improve the driver comfort and make the design more humanized
6	Intelligent braking system	(1) Parking brake is released automatically after shifting the gear and pressing the accelerator pedal; (2) Parking brake is triggered automatically in 5s after the driver leaves the seat;(3) After the machine is shut down, the parking brake is applied automatically to disconnect the walking system, for the purpose of higher safety.
7	Moving arm safety lock is provided	When the moving arm needs to be lifted during maintenance or alike, the moving arm safety lock can prevent the arm from falling, which makes the workers safer
8	Main switch of electrical system	The switch of electrical system can be disconnected in case of a long idle time, so as to prevent the battery from power loss and damage
9	Fully sealed waterproof connectors	Electrical components are more reliable, with IP65 protection rating
10	Various charging modes	The standard on-board charger can fully charge the battery in 8-10h, and the optional international standard REMA quick charger can fully charge the battery in 2 hours.
11	Pedal brake energy recovery function	Energy is recovered automatically when releasing the accelerator pedal, so as to increase the operating hours of the machine
12	Multiple operation modes	Eco: Low energy consumption, save energy resource, slightly reduce the operation performance of machine; Power: Optimal performance, selected when it is necessary to use the telescopic arm or the maximum gear of gearbox
13	LCD control panel	It displays information like steering mode, battery capacity, alarm, walking speed, etc.
14	Handle lock	The function can be triggered by pressing the button or triggered automatically after the driver leaves the seat, in order to prevent misoperation
15	Tipping bucket lock	It ensures that the bucket will not be tipped automatically during walking, for the purpose of higher safety.

