

URW-295

(2.9t x 1.4m)

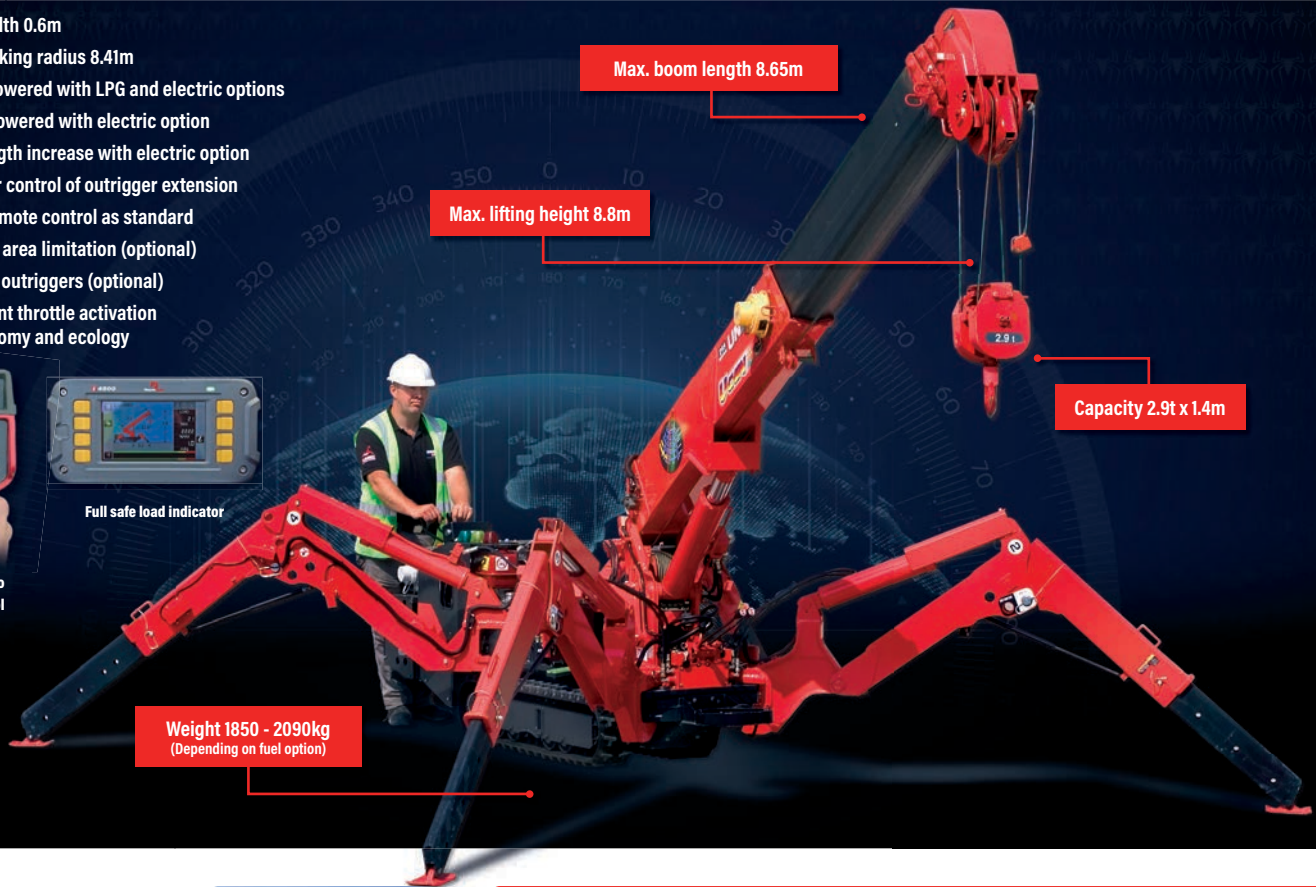
- Total width 0.6m
- Max working radius 8.41m
- Petrol powered with LPG and electric options
- Diesel powered with electric option
- Zero length increase with electric option
- Operator control of outrigger extension
- Radio remote control as standard
- Working area limitation (optional)
- Variable outriggers (optional)
- Intelligent throttle activation for economy and ecology



Standard radio remote control



Full safe load indicator



The URW-295 is the first mini crane available in Europe narrow enough to allow access through a standard doorframe, but with almost 3 tonnes of lifting power. It also leads the way technically with an array of innovative safety features including a computer-controlled, intelligent voice warning system and the unique UNIC pressure compensation proportional valve, which allows multi-function radio remote control operation.



OPTIONS



Bellypack radio remote control



Variable outriggers
See Page 12

CRANE SPECIFICATIONS

Crane capacity	capacity:	2.9t x 1.4m
Max working radius	max:	8.41m
Max lifting height	approx:	8.8m (9.8m with manual fly jib, 10.47m with fixed hook)
Rope length	max:	1412 m (4 fall), 29.24 m (2 fall), 59.47 m (1 fall)
Dimensions	folded:	2690mm (2905mm diesel & electrical dual) (l) x 600mm (w) x 1375mm (h)
Weight	unladen:	petrol: 1850kg (1950kg with electric option) diesel: 1920kg (2090kg with electric option)
Point loadings	Due to the many variables involved, point loadings are only available on request	
Hook speed	approx:	10m/min (with 4 layers and 4 falls)
Telescopic system	boom length:	2.53 - 8.65m
	telescoping speed:	6.12m/20 seconds
	boom type:	5 section, hydraulically telescoping boom, hexagonal box construction
Derricking angle/speed	approx:	0 - 78° / 11 seconds
Slewing angle/speed	approx:	360° (continuous) 1.5 min rpm
Traction system	drive:	hydrostatic, stepless forward and reverse
	travel speed:	0 - 2.3 km/h
	gradeability:	± 20° (vertical) 10° (traverse)
	track ground length:	1050mm
	track ground pressure:	48kPa (0.49 kg/cm²)
Engine	track width:	180mm
	manufacturer:	Mitsubishi (Kubota diesel)
	fuel:	petrol with LPG and electric options, diesel with electric option
	maximum output:	9.6kW (13PS) / 2000min rpm
	starting method:	electric and recoil start as standard
Electric motor	tank capacity:	6 litres petrol, 9 litres diesel
	power:	3.7kW
	voltage:	400v AC 50/60Hz
Standard equipment	computer controlled moment limiter (safe load indicator), radio remote control, overwinding alarm, computer controlled intelligent voice warning system, multi-function operation by radio remote control, intelligent throttle activation, automatic hook stow, overload warning alarms, overload warning lamps	
Optional equipment	1 fall hook block, 2 fall hook block, LPG dual power, mains electric dual power (400v), diesel engine, low marking tracks, slew limitation, searcher hook small 300kg, searcher hook 700kg, manual fly jib 700kg with single part line, bellypack radio remote control, data logging, URW-295 VO (variable outriggers)	

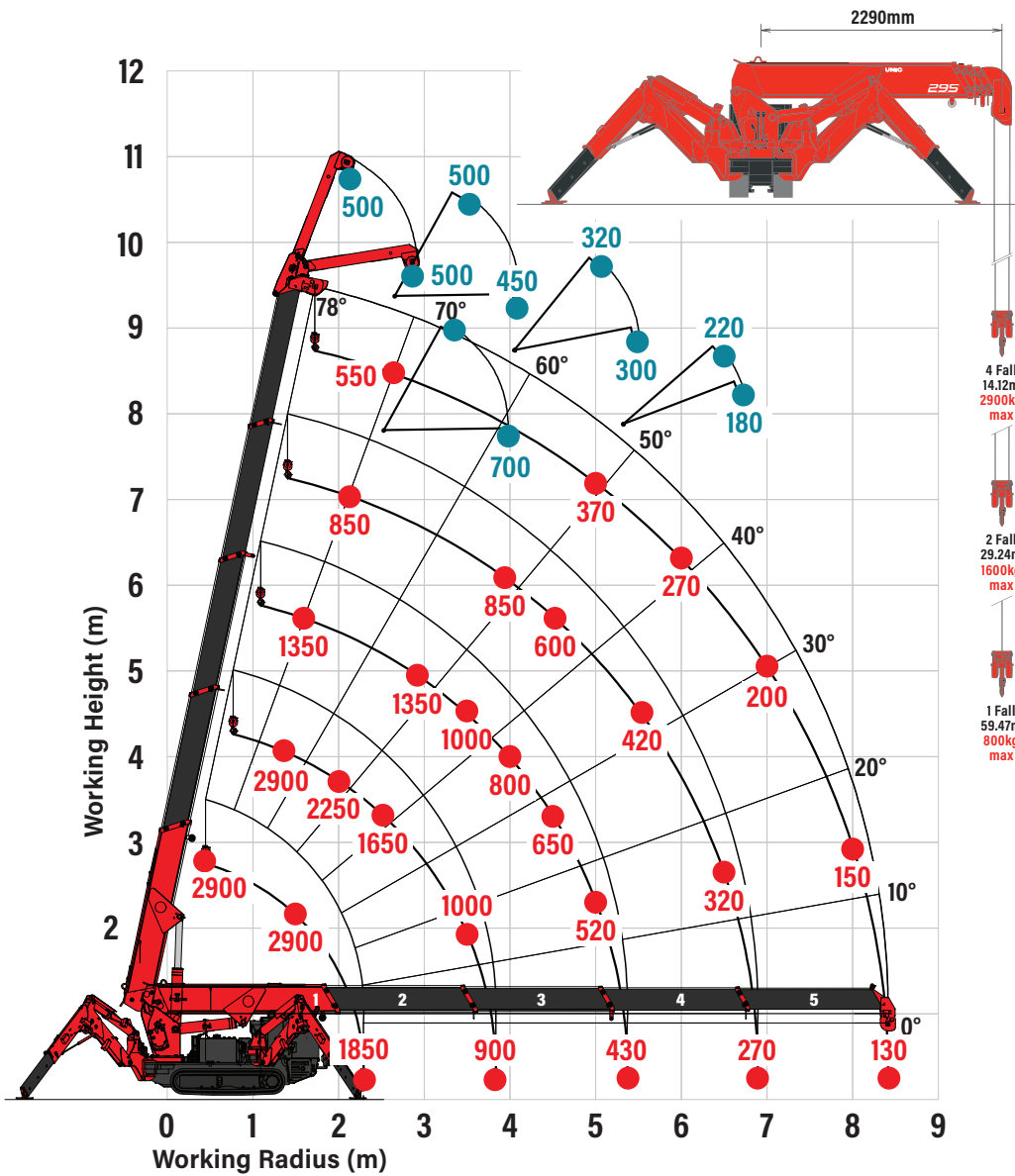
MINI SPIDER CRANE



Spec Sheet

UNIC
CRANES EUROPE

RATED LOADS (kg) & HOOK FALLS



SEARCHER HOOK SMALL - 300kg



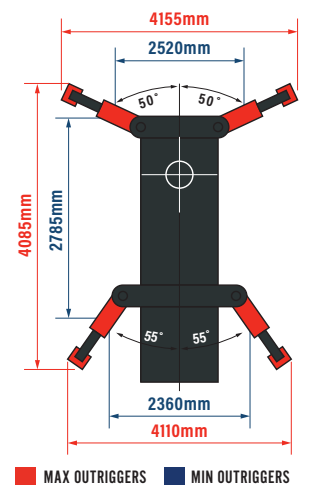
Capacity	300kg
Length	500 mm
Weight	15 kg
Angles	0°, 20°, 40°, 60°

FLY JIB & SEARCHER HOOK - 700kg



Capacity	700kg
Length	1500mm
Weight	40kg
Tilt angles	0°, 20°, 40°, 60°

OUTRIGGER MIN & MAX



DIMENSIONS

Petrol Model / Diesel Model

