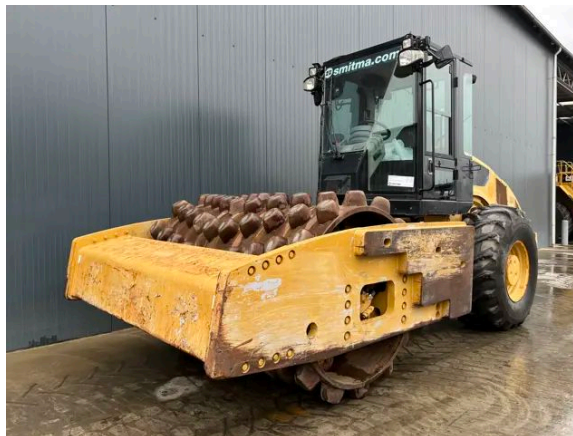


CATERPILLAR CP76

Description

Caterpillar CP76, Caterpillar , C6.6, EPA, Erops cabin, 23.1-26, Air conditioning, Backup camera, Backup alarm, Hours certified by Caterpillar, In very good and clean condition.



Year	2011
Hours	5394
Weight	16.680 kg
Serial number	CAT0CP76TC7L00155
Reference	206754

[Download photos](#)


CONTACT US:
SALES@SMITMA.COM
+31(0)773999840

New/Excellent
★★★★★

Very good
★★★★☆

Good
★★★☆☆

Fair
★★★☆☆

Poor
★★★☆☆

INSPECTION REPORT

FEATURES

Engine brand	Caterpillar
Engine model	C6.6
EPA	✓
Tyre size	23.1-26
Overall condition	In very good and clean condition.

DOCUMENTS

Parts book	✓
Operation manual	✓

GENERAL APPEARANCE

Stamped serial number checked	Yes
Serial number plate checked	Yes
Paint	★★★★★
Decals	★★★★★
Bonnet	★★★★★
Chassis	★★★★★
Steps/ladders	★★★★★
Cabin	★★★★★

ENGINE DETAILS AND CONDITION

Engine number	C6E32191
EPA sticker available	No
Air cleaner	New
Anti-freeze level °C	-15°C
Diesel anti-freeze added	Yes
Diesel level ok	Yes
Cooling liquid level ok	Yes
Engine oil level ok	Yes
Exhaust manifold	★★★★★
Muffler	★★★★★
Exhaust stack	★★★★★
Hoses	★★★★★
Good cold start	Yes
Engine power	★★★★★

Blow by	★★★★★
Knocking	No
Compression in the radiator	No
Water in the oil	No
Oil in the water	No
Smoke	Normal
Engine leaks	No
Belts and pulleys	★★★★★
Fan	★★★★★
Radiator	★★★★★

SAFETY ITEMS

Backup alarm	Not Working
Backup camera	Not Working
Seat belt	Available
Horn	Working
Parking brake	Working

OPERATOR STATION

Hourmeter	Working, hours certified by Caterpillar
Air conditioning	Not Working
Heater	Not Working
Gauges	Working
Switches	★★★★★
Display	★★★★★
Warnings	No warnings available
Mirrors	Not broken
Cabin glass	Not broken
Windshield wipers	Working
Interior lights	Working
Cabin floor	★★★★★
Interior roof	★★★★★
Seat	★★★★★
Door lock	Working

DRUM

Vibratory system	★★★★★
Drum surface	★★★★★
Rubber mounts	★★★★★

Drum scrapers	★★★★★
Leakages	No
Drum oil level ok	Yes
Vibration	High and low vibration frequency working

STEERING

Articulate cylinder leaking	No
Play articulate cylinder	★★★★★
Play articulating point	★★★★★

HYDRAULICS

Hydraulic oil level ok	Yes
Hydraulic lines and fittings	★★★★★
Hydraulic tank/sight glass and cap	★★★★★
Noise hydraulic pump normal	Yes
Operating condition hydraulics	★★★★★

DRIVE CHAIN

Oil level rear axle ok	Yes
Rear axle leakages	No
Wheel bolts and rims	★★★★★
Travel motors	★★★★★
Oil level left final drive ok	Yes
Left final drive leaking	No
Oil level right final drive ok	Yes
Right final drive leaking	No

ELECTRICAL, STARTING AND CHARGING SYSTEM

Alternator functioning	Yes
Wiring	★★★★★
Batteries	★★★★★
Starter	★★★★★

TYRES

REAR LEFT TYRES	
Tread dept in mm	24mm
Percentage life remaining	50%
REAR RIGHT TYRES	

Tread dept in mm	24mm
Percentage life remaining	60%

New/Excellent ★★★★★	Very good ★★★★☆	Good ★★★☆☆	Fair ★★★☆☆	Poor ★☆☆☆☆
------------------------	--------------------	---------------	---------------	---------------

Copyright Smilma BV

