

LIUGONG

ALL NEW
F SERIES

9051FzTs
9057FzTs
EXCAVATORS

Engine

YANMAR 4TNV86CT

Net Power

Ed Stage V
33.5kW (45.0 hp)

9051FzTs

Operating Weight

5,180kg (11,420 lbs)

Bucket Capacity

0.14m³ (0.18 yd³)

9057FzTs

Operating Weight

5,570kg (12,290 lbs)

Bucket Capacity

0.16m³ (0.21 yd³)



TOUGH WORLD. TOUGH EQUIPMENT.

“ THE BEST MACHINES ARE DESIGNED FOR BALANCE, NOT COMPROMISE... ”

YOUR PERFORMANCE DASHBOARD

Research tells us that 6 key performance areas really matter to you. We'd like to use this performance dashboard to present the real, tough facts about our all New 9051Fers / 9057Fers.



TOUGHNESS & DURABILITY



POWER & EFFICIENCY



INTELLIGENCE & CONTROL



COMFORT & ERGONOMICS



SAFETY & VISIBILITY



UPTIME & MAINTENANCE

Bluff for high performance in tight spaces, our new zero tail swing machines match your performance criteria exactly. No compromises, just everything you need. It's not rocket science, it's simply customer focus matched with intelligent design.

CUSTOMER DRIVEN DESIGN...

Our customers don't like compromise, nor do we. That's why we do our homework before we start the design process to really understand how our machines are actually owned and operated.

This insight allows us to perfectly balance the demands of the machine owner and the machine operator but without compromise.



KORHINEN PUMPS

RED DOT AWARD-WINNING DESIGN

Our UK design team were recently recognized with a prestigious Red Dot Award for our new 4180D motor grader recognising its innovation and excellence in product design.



HERE'S THE BIG PICTURE...

A choice of tough, intelligent, zero tail swing machines, that perform as good as they look.



POWER & EFFICIENCY

- Yanmar super-charged, Stage V engine delivering 35.5kW @ 2400rpm.
- Automatic engine idle and stop function as standard.
- 2 travel speeds with automatic "lookdown" to improve traction.

TWO OPERATOR WORK MODES:



P Mode (Power)

Suitable for heavy load applications and pursuit of high productivity.

E Mode (Economy)

Providing maximum efficiency and fuel consumption savings.



TOUGHNESS & DURABILITY

- NEW** Double side mounted upper rollers for improved strength and durability.
- NEW** Arm and bucket cylinder protection guards.
- Improved cast turret extends service life.
- Fully protected undercarriage.
- Steel braided hydraulic hose protection for maximum durability.



COMFORT & ERGONOMICS

- F-Series cab with ergonomic and intuitive design.
- Superior all-round visibility with line of sight visibility to the front of the tracks.
- Fully adjustable mechanical suspension seat as standard with optional air-suspension seat also available.
- Integrated cab radio with Bluetooth connectivity.
- Foldable foot pedals.
- Front windscreen sunshade.



SAFETY & VISIBILITY

- Zero tail swing radius.
- Enhanced cab front and roof protection.
- Machine start password setting.
- LED work-lights as standard with delay function.
- Amber beacon & seatbelt linked Green beacon fitted as standard.
- Arm and boom load holding valves fitted as standard. Dozer blade load holding valve available as an option.



UPTIME & MAINTENANCE

- Flip-up side opening hood gives easy access to the engine bay.
- Intelligent layout gives technicians room to work in comfort.
- Ground level maintenance and service access.
- Grease gun holder as standard.
- Re-fuelling pump fitted as optional with re-fuelling alarm to prevent spillages.



INTELLIGENCE & CONTROL

- Intuitive operator interfaces & control.
- 5.7" colour LCD display.
- Load sensing hydraulics deliver precise and smooth operation for excellent grading performance.
- Dozer float function as standard.

NOW FOR THE DETAIL...

**“ YOU CAN TRUST IT TO DELIVER
IN THE TIGHTEST SPACES ”**



TOUGHNESS AND DURABILITY

DESIGNED TO WORK HARDER, FOR LONGER



DESIGNED TO WORK HARDER, FOR LONGER...

To build a machine compact machine that can withstand the hardest conditions takes intelligent design, and attention to detail. We know that a machine is only as strong as its weakest point, so every weld, every joint, every component is scrutinized to ensure it passes our rigorous durability tests. Here's the proof.



TOUGHNESS AND DURABILITY

1. CAST TURRET SUPPORT

The new, tougher cast turret provides maximum durability and service life of the slew mechanism.

3. TOUGHER UNDERCARRIAGE

Comprehensive design and stringent weld inspection ensures that the undercarriage meets our high quality standards. Thicker panels have also been added to provide further protection.

5. HIGH QUALITY HOSES

Braided steel hose protection ensures the highest levels of protection in the harshest environments.

2. DOUBLE MOUNTED FLANGED UPPER ROLLERS

The upper rollers are supported on both sides to reduce stress and improve toughness. These rollers are also flanged to reduce the likelihood of de-tracking in challenging ground conditions.

4. TOUGHER BOOM AND ARM

Our machines may be tough, but with additional arm and bucket cylinder guards they just got tougher. This ensures suitability for a variety of applications.



PERFORMANCE STATISTICS

+10%

EXTRA WEIGHT IMPROVES STABILITY ON S051F_m & S057F_m

+15%

EXCELLENT ENERGY EFFICIENCY

+10%

EXCELLENT OBSTACLE CROSSING ABILITY

TOUGHNESS IS WHAT WE DO...

With over 100,000 excavators already working in the world's toughest environments, you can trust our machines to keep working harder - for longer.



“ WHY CHOOSE BETWEEN POWER AND EFFICIENCY WHEN YOU CAN HAVE BOTH? ”



POWER AND EFFICIENCY

DESIGNED TO MOVE MORE, FOR LESS



DESIGNED TO MOVE MORE, FOR LESS...

There's no need to compromise digging performance to get the highest fuel efficiency because the all New 9051F₁₆ and 9057F₁₆ gives you both. With greater torque and more power at lower engine speeds, you get the power you want and the fuel efficiency you need.



POWER AND EFFICIENCY

1. MORE REAL POWER

With EFI technology, Yanmar super-charged, Euro V engine delivers 35.5Kw/2400rpm. EFI technology enables the engine to maximize its power output whilst creating less noise and using less fuel.

3. AUTOMATIC TRAVEL SPEED CHANGE

To improve traction our automatic travel speed function will choose the optimum moment to switch from high to low speed when travel is blocked.

5. BUCKET TOUCHING BULLDOZER

Standard with arm, bucket can touch with the blade of bulldozer to achieve quick clearing of ground debris.

2. SAVE EVERY DROP OF FUEL

Engine auto idle and auto shutdown makes every single drop of fuel count. Reducing unproductive fuel saves you money and machine hours. These features also reduce work-site noise improving communication and the environment.

4. MULTI-FUNCTIONING PERFORMANCE

At LiuGong, we understand that you require the ability to use multiple hydraulic services at the same time. We have optimized multi-functioning performance to maximize ease of use and enable you to work efficiently with demanding attachments.



PERFORMANCE STATISTICS

9057F₁₆ vs 9051F₁₆

+4%

EXTRA SLEW TORQUE

+19%

GREATER BUCKET TEAROUT FORCE

+5%

FURTHER REACH AT GROUND LEVEL

WHY COMPROMISE?

The all new ZTS models let you do more, for less cost, and with less environmental impact, don't settle for anything less.



**“ TOUGH MACHINES CAN
BE INTELLIGENT TOO ”**



INTELLIGENCE AND CONTROL

DESIGNED TO WORK SMARTER



DESIGNED TO WORK SMARTER

Smart operators choose smart machines because they know their job is tough enough. When it comes to intelligence and control the all New ZTS models may surprise you as they're packed with smart features to make life easier.



INTELLIGENCE AND CONTROL

1. CHOOSE YOUR MODE

With a choice of 2 Integrated Work Modes (Power Mode & Economy Mode), each designed to match the engine speed, pump flow and system pressure to your chosen application. It's easy to find the perfect balance of performance and economy.

3. USE OUR BRAINS

With a suite of Smart functions at your fingertips you can control your attachment properties from the comfort of your cab. It's easy:

- Adjustable flow control
- 8 attachment settings

5. INTELLIGENT OPERATOR INTERFACE

With a 8.7inch colour touchscreen display and intuitive menu selection, we've made it simple to switch working modes, adjust flow rates and access the machine's intelligent functions.

2. ELECTRO-HYDRAULIC CONTROL


To a professional operator, control is everything. Load sensing hydraulics, equipped with pressure compensated valves deliver precise, smooth and powerful operation no matter what attachments, and with excellent grading performance. Finger-tip control from the Electro proportional joystick delivers precise and sensitive control of all your attachments from the start, to the end of the job.

4. DOZER FLOAT FUNCTION

When dozer float is activated, the dozer blade will automatically follow the contours of the ground. This functionality enables operators to perform fine grading and clean-up activities with maximum ease and control.



ECONOMY (E) MODE
FOR LIGHT WORK



POWER (P) MODE
FOR HEAVY DUTY



SMART IDEAS IN ACTION

The all New ZTS models have the perfect balance of toughness and intelligence designed to keep you in control.

PERFORMANCE
STATISTICS

2.



MODEL
PERFORMANCE
OPTIONS

4.



HEATING AND AIR
CONDITIONING, & AIR
CONDITIONING VENTS

1.



ATTACHMENT
SETTINGS

3.



DEDICATED
WORK
MODES

**“ TOUGH DAYS GO FASTER WHEN
YOU’RE WORKING IN COMFORT ”**



COMFORT AND ERGONOMICS

DESIGNED AROUND THE OPERATOR



DESIGNED AROUND THE OPERATOR

Climb into the spacious cab and you'll know that it has been designed by a team that really knows what it is like to be an operator, talking, listening and observing operators, our design team spend almost as much time in the cab as they do with the CAD. The result? One of the most ergonomic and comfortable cabs you can get.



COMFORT AND ERGONOMICS

1. PERFECT CONTROL

From the ergonomically positioned non-slip pedals to the multi-functional joysticks, the cab interior represents a masterclass in design.

3. YOUR CHOICE OF SEAT

Every operator is different, so we offer a range of seats and joystick configurations to suit everyone.

- ✦ Mechanical suspension standard seat.
- ✦ Air suspension seat available as an option.

5. IT'S SO QUIET

The cab is packed with comfort-enhancing technology; the NVH design & CAE analysis reduces wind resistance and noise. The result, the calmest and quietest operator experience possible at only 74 dB internal noise.

2. INTUITIVE INTERFACE

Every action and movement requires the minimum of effort from the operator. We've designed the operator interface to be even more intuitive and easy to use.

4. MAKE IT YOUR PLACE

We never forget that a machine is not just a tool, it's your place for many hours a day (and night). So, we've remembered all the little things that make it feel like home.

- ✦ Large storage box and rack drinks holder.
- ✦ Phone holder with 12V charging, USB and AUX ports.



PERFECTLY MATCHED TO YOU

The all New ZTS models gives you the operating environment you would design for yourself.

TICKS ALL THE RIGHT BOXES

- ☑ INTUITIVE LCD OPERATOR CONSOLE
- ☑ INTELLIGENT CENTRALIZED CONTROL

- ☑ INTELLIGENT CENTRALIZED CONTROL
- ☑ ADVANCED AIR-CON AND TEMPERATURE CONTROL

- ☑ OPTIMAL VISIBILITY
- ☑ HIGH COMFORT, FULLY ADJUSTABLE SEAT

- ☑ CUSTOMIZABLE OPERATORS ARMRESTS
- ☑ LOW NOISE AND LOW VIBRATION

**“ WE CONSTANTLY ASK... HOW CAN WE
MAKE OUR MACHINES EVEN SAFER ”**



SAFER ALL-ROUND ACCESS

Being protected in the cab is important, but accident research shows us that most accidents occur outside of the machine. We've taken the challenge to make our machines even safer to be around.



SAFETY AND VISIBILITY

1. MORE PROTECTION WHERE YOU NEED IT

The driver protection system delivers even greater protection to the front and top of the cab and protects the operator from falling rocks and debris.

3. EMERGENCY STOP

The operator control isolator lever is fitted as standard. A lockable isolator switch is also fitted in the service bay for improved safety.

5. BE SAFE. BE SEEN

- Standard LED work lights provide excellent visibility in low light conditions.
- Amber beacon & seat-belt linked Green beacon fitted as standard.

2. SAFER AND MORE VERSATILE

With zero tail swing (ZTS), our ST range can work in confined spaces. This design significantly reduces the likelihood of collisions making for a safer working environment.

4. SAFER MAINTENANCE ACCESS

No need to climb on the machine, all the daily maintenance points, including the oil level check point are easily accessible from the ground.

6. NO BLIND SPOTS

The design of the cab provides maximum direct line of sight visibility for the operator.

7. PASSWORD PROTECTION

To prevent unauthorized usage, machine start-up can be password protected.



YOUR SAFETY - OUR PRIORITY



LED WORK-LIGHT DELAY OFF TO MAXIMISE SAFETY



TRAVELLING ALARM & ROTATING WARNING LIGHT



OPTIONAL OIL CYLINDER LOAD HOLDING VALVE

**“ CAN DAILY MAINTENANCE REALLY BE
AS SIMPLE AS THIS? ”**



UPTIME AND MAINTENANCE

DESIGNED TO BE EASY TO SERVICE AND MAINTAIN



EASY TO OWN AND EASY TO MAINTAIN

We understand that when your machine's not working, it's not earning. To maximize your productive hours, we've made the All New ZTS models are even easier to maintain, helping you make every productive second count.



MAINTENANCE AND UPTIME

1. MAINTENANCE FRIENDLY DESIGN

Our re-designed air filter with large ash capacity now has a 1000-hour maintenance cycle – that's one less job to think about.

3. MINIMUM DOWNTIME

With easy access to A/C-refill points, radiator and wash bottle, valve chest, battery and hydraulic tank, we've made it even easier to keep your machine in top condition.

5. EASE OF MAINTENANCE

The fully opening rear and side hoods make service and maintenance access easy. The new component layout creates extra space for technicians to work and includes a grease gun holder for extra convenience. In the cab, a flip seat gives easy access to components beneath.

7. NO SPILLAGE REFUELLING

Electric refuelling pump with auto-stop function to reduce the risk of spillage.

9. FULLY OPEN HOOD

Fully opening rear and side hood with all key maintenance parts visible.

11. LARGE VOLUME FUEL TANK & HIGH LEVEL REMINDER

Offering a large 63L external fuel port-diesel tank and 100% matching operator refuelling, our machine provides efficient and convenient refuelling to the operator. Simply press the refuelling reminder button to clearly display the current fuel level, and throughout the refuelling process, the beeping reminder frequency will increase to indicate nearing completion, avoiding fuel overflow and spillages in the worksite or surrounding environment.

2. INTEGRATED TOOL BOX

The new design features a handy tool storage facility ideal for storing tools, lifting equipment and grease cartridges.

4. HIGH VOLUME FUEL TANK

Fitted with a large 63L fuel tank complete with an "overflow" refuelling alarm, it's easy to avoid wasteful spillages.

6. NO RISK - LOW LEVEL ACCESS

Convenience and safety should never be compromised.

The easy to access optional re-fuelling pump is safely stowed behind the bay door. All filters are located close to the bay doors for safe access and efficient replacement.

8. NEGATIVE SWITCH BATTERY

Right side cover opens for one-stop maintenance, both battery and negative switch are located on the front side of the main valve for easy access.

10. FLIP SEAT

Easily flip the seat with the pull of an under-seat pin for easy and convenient maintenance of the pipes underneath.



**“ WORLD-CLASS PERFORMANCE
DELIVERED BY TOP-TIER COMPONENTS ”**



SPECIFICATIONS

TIME FOR THE DETAIL



SPECIFICATIONS 9051F_{ZTS}



Operating weight 5,180 kg (11,420 lb)

Operating weight includes coolant, lubricants, full fuel tank, cab, standard shoes, boom, arm, bucket and operator 75 kg.

Bucket capacity 0.14 m³ (0.18 yd³)

ENGINE

Description

4-cylinder straight four-stroke, Turbo and common rail

Pressure rating EPA Tier 4F / EU Stage V

Engine manufacturer Yanmar

Engine model 4TV/ROD1-FLV

Aspiration Turbo

Cooling fan drive Direct

Displacement 2.29 L (0.59 gal)

Rated speed 2,200 rpm

Engine output - net 33.5 kW (44.9 hp)

Engine output - gross 35.5 kW (47.6 hp)

Maximum torque 122.5-126.8 Nm (90.5-92.8 lb-ft) @ 1,500 rpm

Bore x Stroke 86 x 80 mm (3.4" x 3.1")

UNDERCARRIAGE

Track shoe pitch 75

Shoe width, high grouser 400 mm (16")

Bottom rollers each side 4

Top rollers each side 1

SWING SYSTEM

Description

Planetary gear reduction driven by high torque axial piston motor, with oil disk brake. Swing parking brake resets within five seconds after using shift control to return to neutral

Swing speed 8.8 rpm

Swing torque 12,000 Nm (8,800 lbf-ft)

HYDRAULIC SYSTEM

Main pump

Type Load-sensing variable piston

Maximum flow 145.0 L/min (38 gal/min)

Relief valve setting

Implement 27.4 MPa (3,978 psi)

Travel circuit 28 MPa (4,071 psi)

Swing circuit 20.5 MPa (2,986 psi)

Plot circuit 5.3 MPa (768 psi)

Hydraulic cylinders

Boom cylinder - Bore x Stroke 90 x 640 mm (3.5" x 25")

Arm cylinder - Bore x Stroke 90 x 670 mm (3.5" x 26")

Bucket cylinder - Bore x Stroke 470 x 120 mm (18.5" x 4.7")

ELECTRIC SYSTEM

System voltage 24 V

Batteries 22V, 50AH, 150CCA

Alternator 24 V-80 A

Start motor 12 V-2.3 kW (3.1 hp)

SERVICE CAPACITIES

Fuel tank 57 L (15.1 gal)

Engine oil 8.3 L (2.2 gal)

Working system 14 L (3.7 gal)

Hydraulic reservoir 34.3 L (9.0 gal)

Hydraulic system total 61 L (16.1 gal)

NOISE PERFORMANCE

Interior sound power level (ISO 6396) 71 dB(A)

Operator sound power level (ISO 6396) 86 dB(A)

BOOM AND BRACE

Description

Swing controlled by two hand levers with pedals

Max. travel speed High 4.3 km/h (2.7 mph) Low 2.4 km/h (1.5 mph)

Gradeability 32°/54%

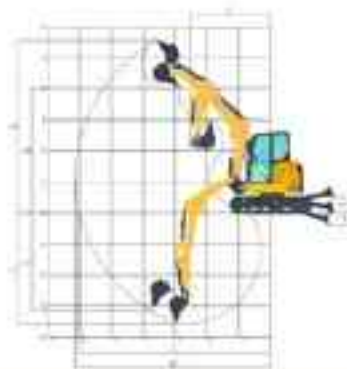
Max. drawbar pull 40



DIMENSIONS

Bore	2,000 mm (65'9")
Arm Offset	1,400 mm (45'9")
A Shipping Length	5,510 mm (18'1")
B Undercarriage Width - 400mm (16") Shoes	1,800 mm (5'9")
C Overall Width of Upper Structure	1,904 mm (6'2")
D Shipping Height - Top of Boom	2,550 mm (8'4")
E Distance from Dozer to Swing	2,000 mm (6'7")
F Counterweight Ground Clearance	601 mm (2'0")
H Tail Swing Radius	980 mm (3'3")
I Length to Center of Rollers	1,830 mm (6'0")
J Track Length	2,445 mm (8'0")
K Track Gauge	1,580 mm (5'2")
L Distance Between the Working Device and Swing Center - Right	684 mm (2'3")
M Distance Between the Working Device and Swing Center - Left	876 mm (2'8")
N Distance from Implement to Swing Center	835 mm (2'8")
α Maximum Boom Swing Angle to the Left	35°
β Maximum Boom Swing Angle to the Right	30°
Track Shoe Width	400 mm (15")
Overall Height of Cab	1,604 mm (5'3")
W ₁ Ground Clearance	297 mm (12")

SPECIFICATIONS 9051F_{ZTS}



WORKING RANGE	
A. Max. Cutting Height	5,423 mm (17'8")
B. Max. Overdigging Height	5,880 mm (19'3")
C. Max. Digging Depth	5,455 mm (17'9")
E. Max. Vertical Wall Digging Depth	2,530 mm (8'3")
F. Min. Front Swing Radius	2,624 mm (8'7")
G. Max. Digging Reach on Ground	5,783 mm (18'11")
H. Max. Digging Reach	5,800 mm (19'2")
I. Lift above Ground	898 mm (2'9")
J. Depth below Ground	-408 mm (1'4")
Max. Digging Depth, 2.44 m (8') Level	5,494 mm (18'2")
Bucket Digging Force (SD)	37 kN (8,310 lbf)
Arm Digging Force (SD)	25 kN (5,620 lbf)
Bucket Capacity	0.14 m ³ (0.38 yd ³)
Bucket Tip Radius	730 mm (2'4")

BOOM DIMENSIONS	
Boom	2,702 mm (8'10")
Length	2,833 mm (9'4")
Height	881 mm (2'9")
Width	345 mm (1'0")
Weight	210.8 kg (465 lb)

*Excludes all cylinders, piping and any attached hose, hydraulic lines.

ARM DIMENSIONS	
Arm	1,465 mm (4'9")
Length	1,928 mm (6'4")
Height	483 mm (1'7")
Width	194 mm (7")
Weight	175.2 kg (386 lb)

*Excludes all hoses, cylinders, hoses and lines.

MACHINE WEIGHTS AND GROUND PRESSURE			
Shoe Width	Operating weight	Ground pressure	Overall width
	5,100 mm (16'9") (boom), 1,410 mm (4'6") (arm), 2.04 m ² (0.16 yd ²) bucket, 320 kg (705 lb) counterweight		
400 mm (16")	5,580 kg (12,305 lb)	28.4 kPa (4.1 psi)	1,350 mm (4'5")

BUCKET SELECTION GUIDE					
Bucket Type	Capacity	Cutting Width	Weight	Teeth per	2,700 mm (8'10") Reach 1,410 mm (4'6") Arm
General Purpose	0.06 m ³ (0.08 yd ³)	200 mm (8")	84 kg (185 lb)	2	A/B
	0.08 m ³ (0.1 yd ³)	400 mm (16")	93 kg (205 lb)	3	A/B
	0.11 m ³ (0.15 yd ³)	400 mm (16")	100 kg (220 lb)	3	A/B
	0.14 m ³ (0.18 yd ³)	650 mm (2'6")	107 kg (237 lb)	4	A/B
	0.3 m ³ (0.38 yd ³)	890 mm (2'10")	206 kg (455 lb)	6	A/B
0.28 m ³ (0.34 yd ³)	1,200 mm (4'0")	230 kg (507 lb)	6	A/B	

The above specifications are given as a guide only, based on typical operating conditions. Bucket capacity, based on 90° bucket material with a 1:1 slope of repose.

Maximum machine limits:
 A. 1,200 (1,200 kg/m² / 2,000 (0.81 kg/m²)) - Comp. Substr. (Flow)
 B. 1,200 (1,600 kg/m² / 2,200 (0.89 kg/m²)) - Dry and loose clay, sandstone, sandstone
 C. 1,200 (1,400 kg/m² / 2,400 (0.93 kg/m²)) - Sandstone and sand, articulated rock
 D. 1,200 kg/m² (2,200 kg/m²) - Wet mud, firm soil
 M. Soil application

SPECIFICATIONS 9051F_{ZTS}



Lifting capacity differs with and without bucket.
For lifting capacity including bucket weight or the weight of the bucket with any attachments (as indicated) for the lifting capacities.
Lifting capacities are based on the machine standing on a firm, uniform supporting surface.



- Do not exceed the 9051F's factory load that is greater than the rated capacity at that specified load radius and height. Loads at all positions must be distributed even the above lifting capacities.
- The 9051F loads up to its maximum with ISO 15557 Hydraulic Excavator Lift Capacity Rating Standard. They do not exceed 90% of hydraulic lifting capacity or 70% lifting load.
- Always at rated lift level.

- Lifting capacities are based on machine standing on level, firm and uniform ground.
- Indicate this load is limited by its design capacity rather than bucket capacity.
- Operator should be fully acquainted with the Operator and Maintenance Instructions before operating the machine and read for the safe operation of equipment should be referred to it at all times.

LIFTING CAPACITY (METRIC)

9051F_{ZTS} with 400 mm Shoes, 2,700 mm Boom, 1,450 mm Arm

Conditions

Gradeability: 3,000mm
Avg. height: 1,600mm
Bucket: 300mm
Shoes: 400mm
SW: 900 kg



Back Over

A (mm: ft)

R (ft)	2.0		3.0		4.0		MAX REACH		A (ft)
	Cr	Cs	Cr	Cs	Cr	Cs	Cr	Cs	
2.0	kg				1,400	900	1,430	870	9.2
3.0	kg		1,600	1,200	1,470	910	1,440	790	9.8
4.0	kg		2,200	1,200	1,710	900	1,280	870	10.0
GROUND LEVEL	kg		2,800	1,190	2,000	940	1,230	900	10.0
-1.0	kg	2,000	2,200	2,800	1,190	2,000	920	1,000	9.2

Back Up

A (mm: ft)

R (ft)	2.0		3.0		4.0		MAX REACH		A (ft)
	Cr	Cs	Cr	Cs	Cr	Cs	Cr	Cs	
2.0	kg				1,000	900	1,050	870	9.2
3.0	kg		1,000	1,000	1,200	910	900	790	9.8
4.0	kg		1,300	1,200	1,200	940	910	870	10.0
GROUND LEVEL	kg		1,700	1,000	1,100	900	900	900	10.0
-1.0	kg	2,000	2,000	1,300	1,100	900	900	900	9.8

Lifting capacity differs with and without bucket.
For lifting capacity including bucket weight or the weight of the bucket with any attachments (as indicated) for the lifting capacities.

Lifting capacities are based on the machine standing on a firm, uniform supporting surface.



- Do not attempt to lift or load any load that is greater than these rated values at their specified load radius and height. Weight of all attachments must be included into the above lifting capacities.
- The rated loads are in compliance with ISO 15557 Hydraulic Excavator Lift Capacity Rating Standard. They do not exceed 90% of rated lifting capacity or 70% lifting load.
- Always at rated lift level.

- Lifting capacities are based on machine standing on level, firm and uniform ground.
- Indicate this load is limited by hydraulic capacity rather than bucket capacity.
- Operator should be fully acquainted with the Operator and Maintenance Instructions before operating the machine and read for the safe operation of equipment should be referred to it at all times.

LIFTING CAPACITY (METRIC)

9051F_{ZTS} with 50° Shoes, 0'10" Boom, 4'9" Arm

Conditions

Gradeability: 3,100mm
Avg. height: 1,700mm
Bucket: 300mm
Shoes: 50°
SW: 900 kg



Back Over

A (mm: ft)

R (ft)	6.0		9.0		12.0		MAX REACH		A (ft)
	Cr	Cs	Cr	Cs	Cr	Cs	Cr	Cs	
10	kg				2,000	2,000	2,100	1,600	11.8
6.0	kg				2,270	2,000	2,240	2,210	10.8
3.0	kg		2,000	2,100	2,700	2,000	2,040	1,400	10.4
GROUND LEVEL	kg		2,400	2,000	2,100	1,900	2,070	1,400	10.4
-1.0	kg	2,000	2,000	2,000	2,000	2,000	2,000	2,000	10.8

Back Up

A (mm: ft)

R (ft)	6.0		9.0		12.0		MAX REACH		A (ft)
	Cr	Cs	Cr	Cs	Cr	Cs	Cr	Cs	
11	kg				2,700	2,000	2,600	1,600	12.8
6.0	kg				2,270	2,000	2,700	2,210	12.8
3.0	kg		2,000	2,100	2,000	2,000	2,010	1,400	10.4
GROUND LEVEL	kg		2,700	2,000	2,000	1,900	2,000	1,400	10.4
-1.0	kg	2,000	2,000	2,000	2,000	2,000	2,000	2,000	10.8

SPECIFICATIONS 9057F_{ZTS}



Operating weight 5,570 kg (12,280 lbs)

Operating weight includes coolant, lubricants, full fuel tank, cab, standard shoes, boom, arm, bucket and operator 75 kg.

Bucket capacity 0.16 m³ (0.21 yd³)

ENGINE

Description

4-cylinder straight four-stroke, Turbo and common rail

Pressure rating EPA Tier 4F / EU Stage V

Engine manufacturer Yanmar

Engine model 4TV/ROCT-PLV

Aspiration Turbo

Cooling fan drive Direct

Displacement 2.29 L (0.59 gal)

Rated speed 2,200 rpm

Engine output - net 33.5 kW (44.9 hp)

Engine output - gross 35.5 kW (47.6 hp)

Maximum torque 122.4-126.8 Nm (90-92.3 lbf-ft) @ 1,500 rpm

Bore x Stroke 86 x 80 mm (3.4" x 3.1")

UNDERCARRIAGE

Track shoe pitch 7°

Shoe width, high grouser 400 mm (16")

Bottom rollers each side 5

Top rollers each side 1

SWING SYSTEM

Description

Planetary gear reduction driven by high torque cast-iron motor, w/ft of disk brake. Swing parking brake resets within five seconds after using shift control to return to neutral

Swing speed 8.8 rpm

Swing torque 13,000 Nm (9,588 lbf-ft)

HYDRAULIC SYSTEM

Main pump

Type Load-sensing variable piston

Maximum flow 145.0 L/min (38 gal/min)

Relief valve setting

Implement 27.4 MPa (3,978 psi)

Travel circuit 28 MPa (4,071 psi)

Swing circuit 20.5 MPa (2,986 psi)

Plot circuit 5.3 MPa (768 psi)

Hydraulic cylinders

Boom cylinder - Bore x Stroke 95 x 640 mm (3.7" x 25.2")

Arm cylinder - Bore x Stroke 95 x 621 mm (3.7" x 24.5")

Bucket cylinder - Bore x Stroke 97 x 560 mm (3.8" x 22.0")

ELECTRIC SYSTEM

System voltage 24 V

Batteries 22V, 50Ah, 150CCA

Alternator 24 V-80 A

Start motor 12 V-2.3 kW (3.1 hp)

SERVICE CAPACITIES

Fuel tank 57 L (15.1 gal)

Engine oil 8.3 L (2.2 gal)

Working system 14 L (3.7 gal)

Hydraulic reservoir 24.3 L (6.4 gal)

Hydraulic system total 61 L (16.1 gal)

NOISE PERFORMANCE

Interior sound power level (ISO 6396) 71 dB(A)

Operator sound power level (ISO 6396) 86 dB(A)

BOOM AND BRACE

Description

Swing controlled by two hand levers with pedals

Max. travel speed High 4.3 km/h (2.7 mph) Low 2.4 km/h (1.5 mph)

Gradeability 32°/54%

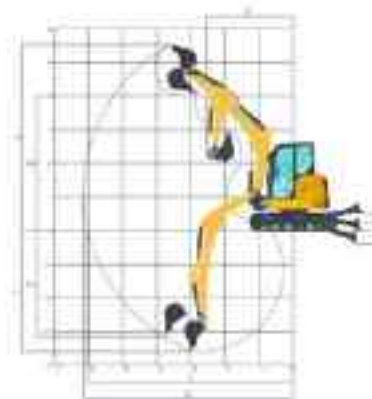
Max. drawbar pull 40



DIMENSIONS

B.Boom	2,800 mm (89')
Arm Outreach	5,370 mm (176')
A.Shipping Length	5,030 mm (165')
B.Undercarriage Width - 400mm (16") Shoes	1,800 mm (59')
C.Overall Width of Upper Structure	1,904 mm (62')
D.Shipping Height - Top of Boom	2,550 mm (84')
E.Distance from Dozer to Swing	2,000 mm (66')
F.Counterweight Ground Clearance	621 mm (21')
H.Tail Swing Radius	1,040 mm (34')
I.Length to Center of Rollers	1,830 mm (60')
J.Track Length	2,505 mm (82')
K.Track Gauge	1,580 mm (52')
L.Distance Between the Working Device and Swing Center - Right	684 mm (22')
M.Distance Between the Working Device and Swing Center - Left	876 mm (28')
N.Distance from Implement to Swing Center	835 mm (27')
α.Maximum Boom Swing Angle to the Left	35°
β.Maximum Boom Swing Angle to the Right	30°
Track Shoe Width	400 mm (16")
Overall Height of Cab	1,604 mm (52')
W ₁ Ground Clearance	297 mm (12')

SPECIFICATIONS 9057F_{ZTS}



WORKING RANGE	
A/Max. Cutting Height	5,571 mm (18 3')
B/Max. Dumping Height	4,000 mm (13 1')
C/Max. Digging Depth	3,830 mm (12 6')
E/Max. Vertical Wall Digging Depth	3,860 mm (12 7')
F/Min. Front Swing Radius	2,538 mm (8 3')
G/Max. Digging Reach on Ground	6,040 mm (19 8')
H/Max. Digging Reach	6,182 mm (20 3')
I/Ch above Ground	894 mm (2 9')
J/Depth below Ground	402 mm (1 4')
Max. Digging Depth, 2:44 m (8') Level	2,738 mm (9 0')
Bucket Digging Force (S2)	44 kN (9,932 lbf)
Arm Digging Force (S2)	27 kN (6,070 lbf)
Bucket Capacity	0.18 m ³ (0.21 yd ³)
Bucket Tip Radius	488 mm (1 6')

BODY DIMENSIONS	
Beam	2,850 mm (9 4')
Length	2,580 mm (8 5')
Height	1,022 mm (3 4')
Width	382 mm (1 2')
Weight	322.7 kg (711 lbs)

Excludes arm cylinder, digging stick pin, bucket boom cylinder pin.

ARM DIMENSIONS		
Arm	1,870 mm (6 1')	1,800 mm (5 10')
Length	2,048 mm (6 7')	2,280 mm (7 6')
Height	383 mm (1 3')	380 mm (1 1')
Width	166 mm (7")	166 mm (7")
Weight	191.3 kg (422 lbs)	210.0 kg (464 lbs)

Excludes bucket cylinder, digging stick pin.

DIGGING DIMENSIONS	Normal Bore		Angle Bore
	Length	1,238 mm (4 1')	1,112 mm (3 7')
Height	330 mm (1 1')	420 mm (1 4')	
Width	1,380 mm (4 5')	1,380 mm (4 5')	
Weight	267 kg (585 lbs)	448 kg (985 lbs)	

Excludes cylinder and pin.

MACHINE WEIGHTS AND GROUND PRESSURE			
Shoe width	Operating weight	Ground pressure	Overall width
	3,830 mm (12 6') boom, 1,570 mm (5 1') arm, 1,160 mm (3 8') bucket, 701 kg (1,545 lbs) counterweight		
400 mm (16")	3,507 kg (7,730 lbs)	31.7 kPa (4.6 psi)	1,280 mm (5 0')

BUCKET SELECTION GUIDE					
Bucket Type	Capacity	Cutting Width	Weight	Teeth pins	0.600 m (2 0") Beam 1.570 m (5 1") Arm
General Purpose	0.08 m ³ (0.09 yd ³)	300 mm (1 2')	84 kg (185 lbs)	2	A/B
	0.09 m ³ (0.1 yd ³)	400 mm (1 6')	83 kg (183 lbs)	3	A/B
	0.11 m ³ (0.12 yd ³)	450 mm (1 8')	101 kg (223 lbs)	3	A/B
	0.16 m ³ (0.21 yd ³)	520 mm (2 1')	158 kg (348 lbs)	4	A/B
	0.28 m ³ (0.34 yd ³)	700 mm (2 6')	205 kg (452 lbs)	0	A/B
0.38 m ³ (0.44 yd ³)	1,020 mm (3 4')	320 kg (707 lbs)	0	A/B	

The bucket capacities are given as a guide only, based on typical operating conditions. Bucket capacity based on ISO 15381 (except bucket with 2:1 slope of lip).

Maximum ratings limits:
 A: 1,200 kg (2,645 lbs) / (2,645 x 0.91) lbs/m² / Cap. bucket 4 tons
 B: 1,300 kg (2,866 lbs) / (2,866 x 0.91) lbs/m² / No load 4.5 tons max. maximum 5 tons max.
 C: 1,200 kg (2,645 lbs) / (2,645 x 0.91) lbs/m² / Overall and max. allowable load.
 D: 1,200 kg (2,645 lbs) / (2,645 x 0.91) lbs/m² / Max. load bucket.
 M: Not applicable.

SPECIFICATIONS 9057F_{ZTS}



Lifting capacity at the arm end without bucket.
For lifting capacity including bucket weight of the bucket or the bucket with any 6 tonne payload (as indicated) from the lifting capacities.

Lifting capacities are based on the machine standing at a 0° tilt on firm supporting surface.



- Do not attempt to lift or hoist any load that is greater than the rated capacity of that specified load radius and height. Loads at all positions must be indicated from the above lifting capacities.
- The rated loads are for machines with ISO 15557 Hydraulic Excavator LIFT Capacity Rating Standard. They do not apply to 10% of hydraulic lifting capacity or 70% lifting load.
- Storage at bucket 0° level.

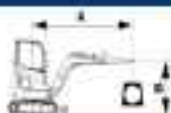
- Lifting capacities are based on machine standing on level, firm and uniform ground.
- Indicate this load is limited by its bucket capacity rather than boom capacity.
- Operator should be fully acquainted with the Operator and Maintenance Instructions before operating the machine and user for the safe operation of equipment should be adhered to at all times.

LIFTING CAPACITY (METRIC)

9057F_{ZTS} with 400 mm Shovel, 2,850 mm Boom, 1,570 mm Arm

Conditions

Boom length: 2,850 mm
Arm length: 1,570 mm
Bucket: 400 mm
Shovel: 400 mm
100% kg



Grade Down

A (m): (ft)

B (m)	3.0		4.0		5.0		MAX REACH		A (ft)
	Cr	Cs	Cr	Cs	Cr	Cs	Cr	Cs	
3.0	kg				1,680	800	1,210	380	4.0
4.0	kg				1,340	600	1,200	400	5.1
5.0	kg		2,850	1,200	1,840	800	1,270	400	6.2
6.0 (ISO) (2.95)	kg		2,850	1,100	1,740	670	1,250	380	6.2
7.0	kg	2,260	1,070	1,260	1,100	790	1,000	410	7.1

Grade Up

A (m): (ft)

B (m)	3.0		4.0		5.0		MAX REACH		A (ft)
	Cr	Cs	Cr	Cs	Cr	Cs	Cr	Cs	
3.0	kg				1,340	600	1,040	760	4.0
4.0	kg				1,040	500	800	400	5.1
5.0	kg		1,730	1,200	1,400	640	800	400	6.2
6.0 (ISO) (2.95)	kg		1,670	1,100	1,300	570	750	380	6.2
7.0	kg	1,360	1,070	1,440	1,100	790	850	410	7.1

Lifting capacity at the arm end without bucket.
For lifting capacity including bucket weight of the bucket or the bucket with payload (as indicated) from the lifting capacities.

Lifting capacities are based on the machine standing on a firm, uniform supporting surface.



- Do not attempt to lift or hoist any load that is greater than these rated values at their specified load radius and height. Weight of all accessories must be indicated from the above lifting capacities.
- The rated loads are in compliance with ISO 15557 Hydraulic Excavator LIFT Capacity Rating Standard. They do not exceed 10% of full rated lifting capacity or 70% lifting load.
- Storage at bucket 0° level.

- Lifting capacities are based on machine standing on level, firm and uniform ground.
- Indicate this load is limited by hydraulic capacity rather than lifting capacity.
- Operator should be fully acquainted with the Operator and Maintenance Instructions before operating the machine and user for the safe operation of equipment should be adhered to at all times.

LIFTING CAPACITY (METRIC)

9057F_{ZTS} with 14" Shovel, 24" Boom, 5'2" Arm

Conditions

Boom length: 6'9"
Arm length: 5'2"
Bucket: 1000
Shovel: 14"
100% kg



Grade Down

A (m): (ft)

B (ft)	6.6		10		13.1		MAX REACH		A (ft)
	Cr	Cs	Cr	Cs	Cr	Cs	Cr	Cs	
10	kg				2,220	1,020	1,680	400	10.1
13.1	kg				1,670	760	1,440	400	13.1
16.1	kg		5,070	2,000	3,440	1,000	2,000	400	16.1
19.1	kg		5,070	1,800	3,140	880	1,820	380	19.1
22.1	kg	4,000	1,670	2,000	2,200	1,000	1,740	400	22.1
25.1	kg	3,000	1,500	2,000	1,740	880	1,560	400	25.1

Grade Up

A (m): (ft)

B (ft)	6.6		10		13.1		MAX REACH		A (ft)
	Cr	Cs	Cr	Cs	Cr	Cs	Cr	Cs	
10	kg				1,670	760	1,000	600	10.1
13.1	kg				1,000	600	760	400	13.1
16.1	kg		2,000	1,500	2,000	880	1,000	400	16.1
19.1	kg		1,800	1,300	1,670	760	900	380	19.1
22.1	kg	1,300	1,500	1,670	1,000	880	1,000	400	22.1
25.1	kg	1,000	1,300	1,500	880	760	900	380	25.1

STANDARD EQUIPMENT

9051F_{ZTS}

9057F_{ZTS}

ENGINE SYSTEM

	9051F _{ZTS}	9057F _{ZTS}
Automatic preheating	<input checked="" type="checkbox"/>	<input checked="" type="checkbox"/>
Engine overheat protection	<input checked="" type="checkbox"/>	<input checked="" type="checkbox"/>
Engine oil low pressure protection	<input checked="" type="checkbox"/>	<input checked="" type="checkbox"/>
Auto idling	<input checked="" type="checkbox"/>	<input checked="" type="checkbox"/>
Auto idling stop function	<input checked="" type="checkbox"/>	<input checked="" type="checkbox"/>
Electric refueling pump with auto shutoff	<input checked="" type="checkbox"/>	<input checked="" type="checkbox"/>

ELECTRICAL SYSTEM

	9051F _{ZTS}	9057F _{ZTS}
1 signaling/warning horns	<input checked="" type="checkbox"/>	<input checked="" type="checkbox"/>
Pilot control shut-off lever	<input checked="" type="checkbox"/>	<input checked="" type="checkbox"/>
Battery disconnect switch	<input checked="" type="checkbox"/>	<input checked="" type="checkbox"/>
12V power on demand	<input checked="" type="checkbox"/>	<input checked="" type="checkbox"/>
Boom and internal lights with time delay capability	<input checked="" type="checkbox"/>	<input checked="" type="checkbox"/>
Color LCD 5.7" monitor	<input checked="" type="checkbox"/>	<input checked="" type="checkbox"/>
Power-on password setting	<input checked="" type="checkbox"/>	<input checked="" type="checkbox"/>
P/E work modes	<input checked="" type="checkbox"/>	<input checked="" type="checkbox"/>
Theft alarm	<input checked="" type="checkbox"/>	<input checked="" type="checkbox"/>
Rotating beacon	<input checked="" type="checkbox"/>	<input checked="" type="checkbox"/>
Secondary engine shutoff switch	<input checked="" type="checkbox"/>	<input checked="" type="checkbox"/>
Seatbelt connected warning beacon	<input checked="" type="checkbox"/>	<input checked="" type="checkbox"/>
Boom work lamp guard	<input checked="" type="checkbox"/>	<input checked="" type="checkbox"/>
T-BOX	<input checked="" type="checkbox"/>	<input checked="" type="checkbox"/>

HYDRAULIC SYSTEM

	9051F _{ZTS}	9057F _{ZTS}
Pilot accumulator	<input checked="" type="checkbox"/>	<input checked="" type="checkbox"/>
Automatic swing parking brake	<input checked="" type="checkbox"/>	<input checked="" type="checkbox"/>
Boom cylinder rod protect	<input checked="" type="checkbox"/>	<input checked="" type="checkbox"/>
Dipper blade cylinder rod protect	<input checked="" type="checkbox"/>	<input checked="" type="checkbox"/>
Dual way auxiliary lines with proportional joystick control, Monitor-controlled auxiliary (circulator or two way)	<input checked="" type="checkbox"/>	<input checked="" type="checkbox"/>
High pressure quick coupler line with alarm	<input checked="" type="checkbox"/>	<input checked="" type="checkbox"/>
Dipper blade with float function	<input checked="" type="checkbox"/>	<input checked="" type="checkbox"/>
Automatic ten speed travel	<input checked="" type="checkbox"/>	<input checked="" type="checkbox"/>
Boom and arm load holding valve, with overload alarm	<input checked="" type="checkbox"/>	<input checked="" type="checkbox"/>

OPERATOR STATION

	9051F _{ZTS}	9057F _{ZTS}
Enclosed cabin with ROPS	<input checked="" type="checkbox"/>	<input checked="" type="checkbox"/>
Document holder	<input checked="" type="checkbox"/>	<input checked="" type="checkbox"/>
Fire extinguisher, inc. bracket	<input checked="" type="checkbox"/>	<input checked="" type="checkbox"/>
Cab rearview mirrors (left, right, back)	<input checked="" type="checkbox"/>	<input checked="" type="checkbox"/>
Operable front windshield with assist device	<input checked="" type="checkbox"/>	<input checked="" type="checkbox"/>
Armrest box, height adjustable	<input checked="" type="checkbox"/>	<input checked="" type="checkbox"/>
LED lights on cab front (2 lights)	<input checked="" type="checkbox"/>	<input checked="" type="checkbox"/>
Pneumatic suspension heated seat & 2 inch red retractable seat belt with wire connector	<input checked="" type="checkbox"/>	<input checked="" type="checkbox"/>
Front window with sliding sun visor	<input checked="" type="checkbox"/>	<input checked="" type="checkbox"/>
AM/FM radio with USB charging interface and Bluetooth	<input checked="" type="checkbox"/>	<input checked="" type="checkbox"/>
Automatic air conditioner, heater	<input checked="" type="checkbox"/>	<input checked="" type="checkbox"/>

DIGGING EQUIPMENT

	9051F _{ZTS}	9057F _{ZTS}
Boom	2,700 mm (9'4")	2,850 mm (9'10")
Standard arm	1,400 mm (4'9")	1,570 mm (5'2")
Boom swing	<input checked="" type="checkbox"/>	<input checked="" type="checkbox"/>

UPPER STRUCTURE

	9051F _{ZTS}	9057F _{ZTS}
Butter filler at front of platform	<input checked="" type="checkbox"/>	<input checked="" type="checkbox"/>
Lockable fuel box	<input checked="" type="checkbox"/>	<input checked="" type="checkbox"/>
Towing eye on base frame	<input checked="" type="checkbox"/>	<input checked="" type="checkbox"/>
2 mm platform bottom plate	<input checked="" type="checkbox"/>	<input checked="" type="checkbox"/>
Traction hole	<input checked="" type="checkbox"/>	<input checked="" type="checkbox"/>
Towing eye on machine lifting	<input checked="" type="checkbox"/>	<input checked="" type="checkbox"/>
Maintenance tool kit	<input checked="" type="checkbox"/>	<input checked="" type="checkbox"/>

UNDERCARRIAGE

	9051F _{ZTS}	9057F _{ZTS}
Rubber shoes 400 mm (16")	<input checked="" type="checkbox"/>	<input checked="" type="checkbox"/>

OPTIONAL EQUIPMENT

9051F_{ZTS}

9057F_{ZTS}



HYDRAULIC SYSTEM

	9051F _{ZTS}	9057F _{ZTS}
Arm cylinder rod protect	<input type="checkbox"/>	<input type="checkbox"/>
Bucket cylinder rod protect	<input type="checkbox"/>	<input type="checkbox"/>
Low pressure quick coupler fix with alarm	<input type="checkbox"/>	<input type="checkbox"/>
High pressure quick coupler	<input type="checkbox"/>	<input type="checkbox"/>
Attachment rotation limit with flow adjustment	<input type="checkbox"/>	<input type="checkbox"/>
Attachment return lines	<input type="checkbox"/>	<input type="checkbox"/>
Bring dozer blade with float function	<input type="checkbox"/>	<input type="checkbox"/>

OPERATOR STATION

	9051F _{ZTS}	9057F _{ZTS}
Cab lights on top (4 near 2 front)	<input type="checkbox"/>	<input type="checkbox"/>
Roof guard	<input type="checkbox"/>	<input type="checkbox"/>
Fixed Operator Protective Guards	<input type="checkbox"/>	<input type="checkbox"/>

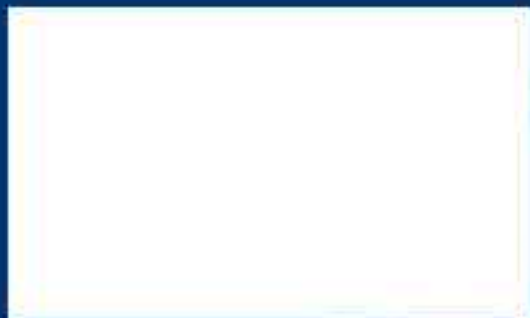
DIGGING EQUIPMENT

	9051F _{ZTS}	9057F _{ZTS}
Breaking hammer	<input type="checkbox"/>	<input type="checkbox"/>
Optional arm	<input type="checkbox"/>	<input type="checkbox"/>
Bucket	<input type="checkbox"/>	<input type="checkbox"/>
Additional counterweight	<input type="checkbox"/>	<input type="checkbox"/>
Hydraulic Thrush	<input type="checkbox"/>	<input type="checkbox"/>

UNDERCARRIAGE

	9051F _{ZTS}	9057F _{ZTS}
600 mm (24") steel track	<input type="checkbox"/>	<input type="checkbox"/>
Long arm dozer blade	<input type="checkbox"/>	<input type="checkbox"/>
400 mm (16") steel track	<input type="checkbox"/>	<input type="checkbox"/>
400mm Steel Sprockets with Rubber Pads	<input type="checkbox"/>	<input type="checkbox"/>





Duzeyi LiuGong Machinery Co., Ltd.
No. 1 Guohua Road, Luoyi, Guangxi 545000, P.R. China
T: +86 773 388 8188 F: +86 773 388 8188
www.liugong.com

Like and follow us:



LG-PD-9081F₁₁₀-3007F₁₁₀-Tier 4F_Stage V-NA-A4-022023-ENG

The LiuGong series of logo marks, including but not limited to word marks, device marks, letter of alphabet marks and combination marks, are the registered trademarks of Guangxi LiuGong Group Co., Ltd. and used by Guangxi LiuGong Machinery Co., Ltd. with legal permission, and shall not be used without permission. Specifications and designs are subject to change without notice. Illustrations and pictures may include optional equipment and may not include all standard equipment. Equipment and options vary by regional availability.