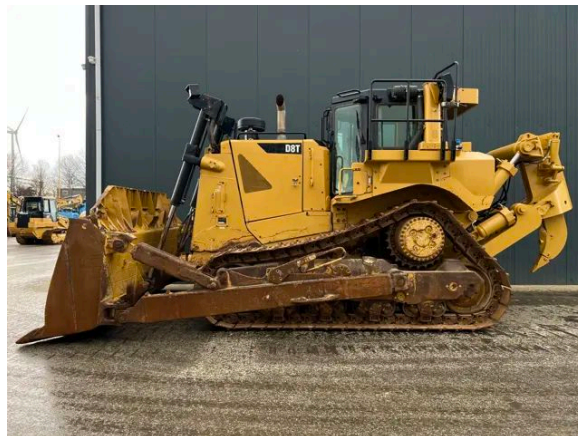


CATERPILLAR D8T - CE - NEW RIPPER

Description

Caterpillar D8T, Engine brand Caterpillar , C15, 294 kW, CE, Air conditioning, Erops cabin, Straight tilt blade, Width of the blade 4.01m, Differential steering, Single shank ripper, Hydraulic pin puller, Width of the pads 610mm, Backup camera, AM/FM radio, Hours certified by Caterpillar, In very good and very clean condition.



Year	2019
Hours	12716
Weight	39.425 kg
Serial number	CAT00D8THAW400573
Reference	205670

[Download photos](#)


CONTACT US:
SALES@SMITMA.COM
+31(0)773999840

New/Excellent
★★★★★

Very good
★★★★☆

Good
★★★☆☆

Fair
★★★☆☆

Poor
★★★☆☆

INSPECTION REPORT

FEATURES

Engine brand	Caterpillar
Engine model	C15
Engine power in kW	294 kW
CE	✓
Air conditioning	✓
Erops cabin	✓
Blade	Straight tilt blade
Width of the blade	4.01m
Steering	Differential steering
Ripper or valve	Single shank ripper
Width of the pads	610mm
Overall condition	In very good and very clean condition.

DOCUMENTS

CE document	CE document available
Parts book	✓
Operation manual	✓

GENERAL APPEARANCE

Stamped serial number checked	Yes
Serial number plate checked	Yes
Paint	★★★★★
Decals	★★★★★
Bonnet	★★★★★
Engine cover doors	★★★★★
Chassis	★★★★★
Grab irons	★★★★★
Cabin	★★★★★
Belly plate	★★★★★
Pre-cleaner bowl	★★★★★

ENGINE DETAILS AND CONDITION

Engine number	ENG04720
Arrangement number	5504646
Air cleaner	Clean

Anti-freeze level °C	-34°C
Diesel anti-freeze added	Yes
Diesel level ok	Yes
Cooling liquid level ok	Yes
Engine oil level ok	Yes
Exhaust manifold	★★★★★
Muffler	★★★★★
Exhaust stack	★★★★★
Engine supports	★★★★★
Hoses	★★★★★
Good cold start	Yes
Engine power	★★★★★
Blow by	★★★★★
Knocking	No
Compression in the radiator	No
Water in the oil	No
Oil in the water	No
Smoke	Normal
Engine leaks	No
Belts and pulleys	★★★★★
Fan	★★★★★
Radiator	★★★★★

UNDERCARRIAGE LEFT IN LIFE IN %

Overall condition	50%
Chains	60%
Bushings	60%
Sprockets	60%
Idlers	60%
Bottom rollers	30%
Track pads	40%

OPERATOR STATION

Hourmeter	Working, hours certified by Caterpillar
Air conditioning	Working
Heater	Working
Gauges	Working
Switches	★★★★★
Display	★★★★★

Warning	No Warnings Available
Cabin glass	Not broken
Windshield wipers	Working
Cabin floor	★★★★★
Interior roof	★★★★★
Seat	★★★★★
Door lock	Working

STEERING

Steering operating condition	★★★★★
------------------------------	-------

FRAME AND BLADE

Moldboard skin	★★★★★
Cutting edge	★★★★★
Play dozer frame	★★★★★
Play blade pin	★★★★★
Play push arms	★★★★★
Play lift cylinder	★★★★★
Lift cylinders leaking	No
Play tilt cylinder	★★★★★
Tilt cylinder leaking	No
Play equaliser bar	★★★★★
Cracks or welds	No

RIPPER

Play ripper	★★★★★
Cylinders leaking	No
Ripper frame	★★★★★

HYDRAULICS

Hydraulic oil level ok	Yes
Hydraulic lines and fittings	★★★★★
Hydraulic tank/sight glass and cap	★★★★★
Hydraulic valves leaking	No
Noise hydraulic pump normal	Yes
Operating condition hydraulics	★★★★★

BRAKE

Service brake operation	★★★★★
-------------------------	-------

Parking brake operation



DRIVE TRAIN/TRANSMISSION

Transmission fully operational in all gears forward and reverse	Yes
Transmission oil level ok	Yes
Transmission noisy	No
Oil level left final drive ok	Yes
Oil level right final drive ok	Yes
Drive chain leaks	No

ELECTRICAL, STARTING AND CHARGING SYSTEM

Alternator functioning	Yes
Wiring	★★★★★
Batteries	★★★★★
Starter	★★★★★
Cabin lights working	Yes
Additional work lights working	Yes

SAFETY ITEMS

Backup alarm	Working
Backup camera	Working
Seat belt	Available
Horn	Working

New/Excellent



Very good



Good



Fair



Poor



Copyright Smitma BV

