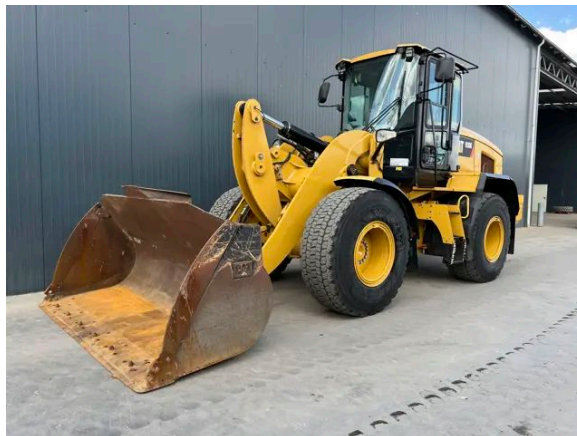


CATERPILLAR 930K

Description

Caterpillar 930K, Engine and model Caterpillar C6.6, 119 kW, EPA, CE, Air conditioning, Erops cabin, 20.5R25 Bridgestone , Hydraulic quick release, GP bucket with bolt on edge, Width of the bucket 2.74m, 3rd valve, Complete steering wheel, Ride control, Autoshift, Backup camera, Backup alarm, Cental lubrication available but not tested, Beacon, AM/FM radio, Hours certified by Caterpillar, In very good and very clean condition.



Year	2012
Hours	4811
Weight	13.700 kg
Serial number	CAT0930KCRHN01173
Reference	205375

[Download photos](#)


CONTACT US:
SALES@SMITMA.COM
+31(0)773999840

New/Excellent
★★★★★

Very good
★★★★☆

Good
★★★☆☆

Fair
★★★☆☆

Poor
★★★☆☆


INSPECTION REPORT

FEATURES

Engine and model	Caterpillar C6.6
Engine power	119 kW
EPA	EPA
CE	✓
Erops cabin	✓
Tyre size	20.5R25 Bridgestone
Bucket	GP bucket with bolt on edge
Width of the bucket	2.74m
Steering	Complete steering wheel
Ride control	✓
Autoshift	✓
Central lubrication	Cental lubrication available but not tested
Beacon	✓
Overall condition	In very good and very clean condition.

DOCUMENTS

Parts book	✓
Operation manual	✓

GENERAL APPEARANCE

Stamped serial number checked	Yes
Serial number plate checked	Yes
Paint	★★★★★
Decals	★★★★★
Bonnet	★★★★★
Chassis	★★★★★
Steps/ladders	★★★★★
Grab irons	★★★★★
Cabin	★★★★★
Pre-cleaner bowl	★★★★★

ENGINE DETAILS AND CONDITION

Engine number	C8N05716
Arrangement number	3474030
EPA sticker available	Yes

Air cleaner	Clean
Anti-freeze level °C	-38 °C
Diesel anti-freeze added	Yes
Diesel level ok	Yes
Cooling liquid level ok	Yes
Engine oil level ok	Yes
Exhaust manifold	★★★★★
Muffler	★★★★★
Exhaust stack	★★★★★
Engine supports	★★★★★
Hoses	★★★★★
Good cold start	No
Engine power	★★★★★
Blow by	★★★★★
Knocking	No
Compression in the radiator	No
Water in the oil	No
Oil in the water	No
Smoke	Normal
Engine leaks	No
Belts and pulleys	★★★★★
Fan	★★★★★
Radiator	★★★★★

OPERATOR STATION

Hourmeter	Working, hours certified by Caterpillar
Air conditioning	Working
Heater	Working
Gauges	Working
Switches	★★★★★
Display	★★★★★
Warning	No warnings available
Mirrors	Not broken
Cabin glass	Not broken
Windshield wipers	Working
Interior lights	Working
Cabin floor	★★★★★
Interior roof	★★★★★
Seat	★★★★★

Door lock	Working
BUCKET	
Overall condition of the bucket	★★★★★
Bottom	★★★★★
Sides	★★★★★
Cutting edge	★★★★★
FRAME	
Play articulation point	★★★★★
Play loading frame	★★★★★
Play bucket pins	★★★★★
Crack or welds	No
HYDRAULICS	
Hydraulic oil level ok	Yes
Hydraulic lines and fittings	★★★★★
Hydraulic tank/sight glass and cap	★★★★★
Hydraulic valves leaking	No
Noise hydraulic pump normal	Yes
Operating condition hydraulics	★★★★★
BRAKE	
Brakelines	★★★★★
Service brake operation	★★★★★
Parking brake operation	★★★★★
Compressor	★★★★★
DRIVE TRAIN/TRANSMISSION	
Transmission fully operational in all gears forward and reverse	Yes
Transmission oil level ok	Yes
Transmission noisy	No
Oil level front axle ok	Yes
Oil level rear axle ok	Yes
ELECTRICAL, STARTING AND CHARGING SYSTEM	
Alternator functioning	Yes
Wiring	★★★★★
Batteries	★★★★★

Starter	★★★★★
Cabin lights working	Yes
Tail lights working	Yes
Additional work lights working	Yes

SAFETY ITEMS

Backup alarm	Working
Seat belt	Available
Horn	Not Working
Beacon	Working

TYRES

FRONT LEFT

Tread dept in mm	17mm
Percentage life remaining	60%

REAR LEFT

Tread dept in mm	16mm
Percentage life remaining	60%

REAR RIGHT

Tread dept in mm	17mm
Percentage life remaining	60%

FRONT RIGHT

Tread dept in mm	16mm
Percentage life remaining	60%

New/Excellent



Very good



Good



Fair



Poor



Copyright Smitma BV

