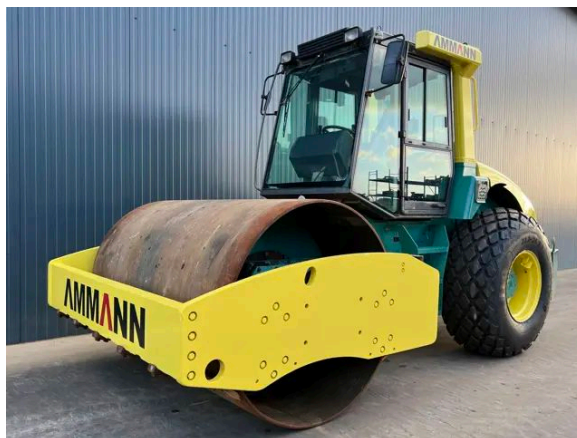


AMMANN ASC130 D

Description

Ammann ASC130 D, Cummins , QSB4.5, 119 kW, EPA, CE, Erops cabin, 23.1-26 NEW!, Air conditioning, Backup alarm, In very good and very clean condition.



Year	2009
Hours	6767
Weight	12.630 kg
Serial number	107228/0104
Reference	208119

[Download photos](#)


CONTACT US:
SALES@SMITMA.COM
+31(0)773999840

New/Excellent



Very good



Good



Fair



Poor



INSPECTION REPORT

FEATURES

Engine brand	Cummins
Engine model	QSB4.5
Engine power in kW	119 kW
EPA	✓
CE	✓
Tyre size	23.1-26 NEW!
Overall condition	In very good and very clean condition.

DOCUMENTS

Parts book	✓
Operation manual	✓

GENERAL APPEARANCE

Serial number plate checked	Yes
Paint	★★★★★
Decals	★★★★★
Bonnet	★★★★★
Steps/ladders	★★★★★
Cabin	★★★★★

ENGINE DETAILS AND CONDITION

Engine number	21835190
EPA sticker available	Yes
Air cleaner	Clean
Anti-freeze level °C	41°C
Diesel anti-freeze added	Yes
Diesel level ok	Yes
Cooling liquid level ok	Yes
Engine oil level ok	Yes
Exhaust manifold	★★★★★
Muffler	★★★★★
Exhaust stack	★★★★★
Hoses	★★★★★
Good cold start	Yes
Engine power	★★★★★

Blow by	★★★★★
Knocking	No
Compression in the radiator	No
Water in the oil	No
Oil in the water	No
Smoke	Normal
Engine leaks	No
Belts and pulleys	★★★★★
Fan	★★★★★
Radiator	★★★★★

SAFETY ITEMS

Backup alarm	Working
Seat belt	Available
Parking brake	Working

OPERATOR STATION

Hourmeter	Working
Air conditioning	Not Working
Heater	Working
Gauges	Few don't work
Switches	★★★★★
Warnings	No warnings available
Mirrors	Not broken
Cabin glass	Not broken
Windshield wipers	Working
Interior lights	Not Working
Cabin floor	★★★★★
Interior roof	★★★★★
Seat	★★★★★

DRUM

Vibratory system	★★★★★
Drum surface	★★★★★
Rubber mounts	★★★★★
Drum scrapers	★★★★★
Leakages	No
Drum oil level ok	Yes
Vibration	High and low vibration frequency working

STEERING

Articulate cylinder leaking	No
Play articulate cylinder	★★★★★
Play articulating point	★★★★★

HYDRAULICS

Hydraulic oil level ok	Yes
Hydraulic lines and fittings	★★★★★
Hydraulic tank/sight glass and cap	★★★★★
Noise hydraulic pump normal	Yes
Operating condition hydraulics	★★★★★

DRIVE CHAIN

Rear axle leakages	No
Wheel bolts and rims	★★★★★
Travel motors	★★★★★
Oil level left final drive ok	Yes
Left final drive leaking	No
Oil level right final drive ok	Yes
Right final drive leaking	No

ELECTRICAL, STARTING AND CHARGING SYSTEM

Alternator functioning	Yes
Wiring	★★★★★
Batteries	★★★★★
Starter	★★★★★
Cabin lights working	Yes
Tail lights working	Yes
Additional work lights working	Yes

TYRES

REAR LEFT TYRES	
Tread dept in mm	25mm
Percentage life remaining	100%
REAR RIGHT TYRES	
Tread dept in mm	25mm
Percentage life remaining	100%

New/Excellent ★★★★★	Very good ★★★★☆	Good ★★★☆☆	Fair ★★★☆☆	Poor ★☆☆☆☆
------------------------	--------------------	---------------	---------------	---------------

Copyright Smilma BV

