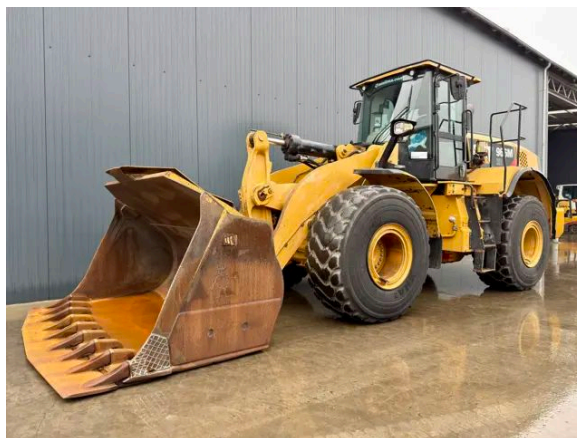


CATERPILLAR 966M XE

Description

Caterpillar 966MXE, Engine and model Caterpillar C9.3, 250 kW, EPA, CE, Air conditioning, Erops cabin, 26.5R25, GP bucket with teeth, Width of the bucket 2.98m, Joy stick control, Ride control, Autoshift, Backup camera, Cental lubrication available but not tested, Beacon, AM/FM radio, Hours certified by Caterpillar, In very good and very clean condition.



Year	2014
Hours	12050
Weight	24.000 kg
Serial number	CAT0966MVP6C00331
Reference	209413

[Download photos](#)


CONTACT US:
SALES@SMITMA.COM
+31(0)773999840

New/Excellent
★★★★★

Very good
★★★★☆

Good
★★★☆☆

Fair
★★☆☆☆

Poor
★☆☆☆☆

INSPECTION REPORT

FEATURES

Engine and model	Caterpillar C9.3
Engine power	250 kW
EPA	EPA
CE	✓
Erops cabin	✓
Tyre size	26.5R25
Bucket	GP bucket with teeth
Width of the bucket	2.98m
Steering	Joy stick control
Ride control	✓
Autoshift	✓
Central lubrication	Cental lubrication available but not tested
Beacon	✓
Hours	Hours certified by Caterpillar
Overall condition	In very good and very clean condition.

DOCUMENTS

Parts book	✓
Operation manual	✓

GENERAL APPEARANCE

Stamped serial number checked	Yes
Serial number plate checked	Yes
Paint	★★★★★
Decals	★★★★★
Bonnet	★★★★★
Engine cover doors	★★★★★
Steps/ladders	★★★★★
Grab irons	★★★★★
Cabin	★★★★★
Pre-cleaner bowl	★★★★★
Toolbox	★★★★★

ENGINE DETAILS AND CONDITION

Engine number	SYE02028
---------------	----------

Arrangement number	3733754
EPA sticker available	Yes
Air cleaner	New
Anti-freeze level °C	-50°C
Diesel anti-freeze added	Yes
Diesel level ok	Yes
Cooling liquid level ok	Yes
Engine oil level ok	Yes
Exhaust manifold	★★★★★
Muffler	★★★★★
Exhaust stack	★★★★★
Engine supports	★★★★★
Hoses	★★★★★
Good cold start	Yes
Engine power	★★★★★
Blow by	★★★★★
Knocking	No
Compression in the radiator	No
Water in the oil	No
Oil in the water	No
Smoke	Normal
Engine leaks	No
Belts and pulleys	★★★★★
Fan	★★★★★
Radiator	★★★★★

OPERATOR STATION

Hourmeter	Working, hours certified by Caterpillar
Air conditioning	Working
Heater	Working
Gauges	Working
Switches	★★★★★
Display	★★★★★
Warning	No warnings available
Mirrors	Not broken
Cabin glass	Not broken
Windshield wipers	Working
Interior lights	Not working
Cabin floor	★★★★★

Interior roof	★★★★★
Seat	★★★☆☆
Door lock	Working

BUCKET

Overall condition of the bucket	★★★★★
Bottom	★★★★☆☆
Sides	★★★★★
Cutting edge	★★★★★
Teeth	★★★★★

FRAME

Play articulation point	★★★★★
Play loading frame	★★★★★
Play bucket pins	★★★★★
Crack or welds	No

HYDRAULICS

Hydraulic oil level ok	Yes
Hydraulic lines and fittings	★★★★★
Hydraulic tank/sight glass and cap	★★★★★
Hydraulic valves leaking	No
Noise hydraulic pump normal	Yes
Operating condition hydraulics	★★★★★

BRAKE

Service brake operation	★★★★★
Parking brake operation	★★★★★
Compressor	★★★★★

DRIVE TRAIN/TRANSMISSION

Transmission fully operational in all gears forward and reverse	Yes
Transmission oil level ok	Yes
Transmission noisy	No
Oil level front axle ok	Yes
Oil level rear axle ok	Yes

ELECTRICAL, STARTING AND CHARGING SYSTEM

Alternator functioning	Yes
------------------------	-----

Wiring	★★★★★
Batteries	★★★★★
Starter	★★★★★
Cabin lights working	Yes
Tail lights working	Yes
Additional work lights working	Yes

SAFETY ITEMS

Seat belt	Available
Horn	Working
Beacon	Working

TYRES

FRONT LEFT

Tread dept in mm	19mm
Percentage life remaining	40%

REAR LEFT

Tread dept in mm	11mm
Percentage life remaining	30%

REAR RIGHT

Tread dept in mm	14mm
Percentage life remaining	30%

FRONT RIGHT

Tread dept in mm	15mm
Percentage life remaining	40%

New/Excellent



Very good



Good



Fair



Poor



Copyright Smitma BV

