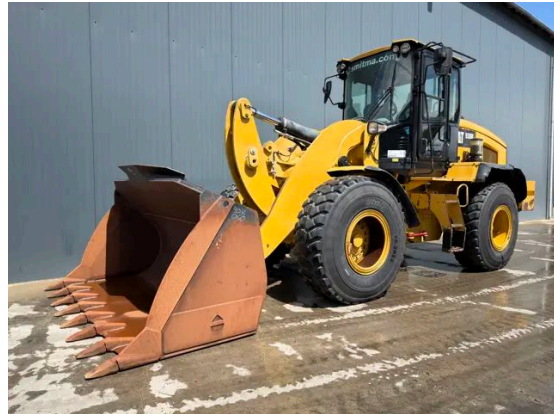


INSPECTION REPORT

CATERPILLAR 938M

The Caterpillar 938M Wheel Loader is equipped with a robust Caterpillar C7.1 engine delivering 140 kW of power. This model offers an Erops cabin, a GP bucket with teeth measuring 2.76 meters in width, and comes with a range of features including a joystick control, ride control, and autoshift. The machine also includes a backup camera and AM/FM radio. It is in very good and clean condition, with hours certified by Caterpillar.



Specifications

Year	2017
Hours	18849
Weight	16500 kg
Serial number	CAT0938MEJ3R02771
Reference	212491

Features

Engine and model	Caterpillar C7.1
Engine power	140 kW
EPA	EPA
CE	✓
Erops cabin	✓
Tyre size	20.5R25
Bucket	GP bucket with teeth
Width of the bucket	2.76m
Steering	Joy stick control
Ride control	✓
Autoshift	✓
Central lubrication	Central lubrication available but not tested
Hours	Hours certified by Caterpillar
Overall condition	In very good and clean condition.

Documents

Parts book	✓
Operation manual	✓

General Appearance

Stamped serial number checked	Yes
Serial number plate checked	Yes
Paint	★★★★☆
Decals	★★★★☆
Bonnet	★★★★☆
Engine cover doors	★★★★☆
Chassis	★★★★☆
Steps/ladders	★★★★☆
Grab irons	★★★★☆
Cabin	★★★★☆
Toolbox	★★★★☆

Engine Details And Condition

Engine number	D8T17612
Arrangement number	3843795
EPA sticker available	Yes
Air cleaner	New
Anti-freeze level °C	-36°C
Diesel anti-freeze added	Yes
Diesel level ok	Yes
Cooling liquid level ok	Yes
Engine oil level ok	Yes
Exhaust manifold	★★★★☆
Muffler	★★★★☆
Exhaust stack	★★★★☆
Engine supports	★★★★☆
Hoses	★★★★☆
Good cold start	Yes
Engine power	★★★★☆
Blow by	★★★★☆
Knocking	No
Compression in the radiator	No
Water in the oil	No
Oil in the water	No
Smoke	Normal
Engine leaks	No
Belts and pulleys	★★★★☆
Fan	★★★★☆
Radiator	★★★★☆

Operator Station

Hourmeter	Working, hours certified by Caterpillar
Air conditioning	Not working
Heater	Working
Gauges	Working
Switches	★★★★☆
Display	★★★★☆
Warning	No warnings available
Mirrors	Not broken
Cabin glass	Small crack no need to repair
Windshield wipers	Working
Interior lights	Not working
Cabin floor	★★★★☆
Interior roof	★★★★☆
Seat	★★★★★
Door lock	Working

Bucket

Overall condition of the bucket	★★★★☆
Bottom	★★★★☆
Sides	★★★★☆
Teeth	★★★★☆

Frame

Play articulation point	★★★★☆
Steering cylinders little play	
Play loading frame	★★★★☆
Play bucket pins	★★★★☆
Crack or welds	No

Hydraulics

Hydraulic oil level ok	Yes
Hydraulic lines and fittings	★★★★☆
Hydraulic tank/sight glass and cap	★★★★☆
Hydraulic valves leaking	No
Noise hydraulic pump normal	Yes
Operating condition hydraulics	★★★★☆

Brake

Service brake operation	★★★★☆
Parking brake operation	★★★★☆
Compressor	★★★★☆

Drive Train/ Transmission

Transmission fully operational in all gears forward and reverse	Yes
Transmission oil level ok	Yes
Transmission noisy	No
Oil level front axle ok	Yes
Oil level rear axle ok	Yes

Electrical, Starting And Charging System

Alternator functioning	Yes
Wiring	★★★★☆
Batteries	★★★★☆
Starter	★★★★☆
Cabin lights working	Yes
Tail lights working	Yes
Additional work lights working	Few lights don't work

Safety Items

Seat belt	Available
-----------	-----------

Tyres

Front Left

Percentage life remaining	60%
---------------------------	-----

Rear Left

Percentage life remaining	60%
---------------------------	-----

Rear Right

Percentage life remaining	60%
---------------------------	-----

Front Right

Percentage life remaining	60%
---------------------------	-----



+31 (0) 77 3999 840



sales@smitma.com



+31 (0) 77 3999 840