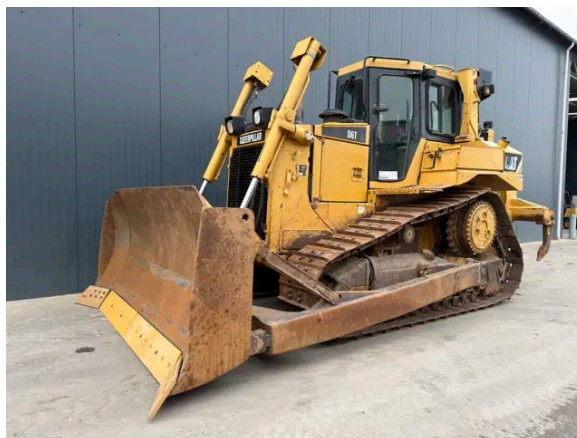


CATERPILLAR D6T XL

Description

Caterpillar D6T XL, Engine brand Caterpillar , C9, 149 kW, CE, Erops cabin, Straight tilt blade, Width of the blade 3.25m, Differential steering, Multi shank ripper, System one undercarriage, Width of the pads 560mm, Hours certified by Caterpillar, In very good and clean condition.



Year	2008
Hours	16175
Weight	23.321 kg
Serial number	CAT00D6TVLAE00185
Reference	210087

[Download photos](#)


CONTACT US:
SALES@SMITMA.COM
+31(0)773999840

New/Excellent
★★★★★

Very good
★★★★☆

Good
★★★☆☆

Fair
★★★☆☆

Poor
★★★☆☆

INSPECTION REPORT

FEATURES

Engine brand	Caterpillar
Engine model	C9
Engine power in kW	149 kW
CE	✓
Erops cabin	✓
Blade	Straight tilt blade
Width of the blade	3.25m
Steering	Differential steering
Ripper or valve	Multi shank ripper
Width of the pads	560mm
Hours	Hours certified by Caterpillar
Overall condition	In very good and clean condition.

DOCUMENTS

Parts book	✓
Operation manual	✓

GENERAL APPEARANCE

Stamped serial number checked	Yes
Serial number plate checked	Yes
Paint	★★★★★
Decals	★★★★★
Bonnet	★★★★★
Engine cover doors	★★★★★
Chassis	★★★★★
Grab irons	★★★★★
Cabin	★★★★★
Belly plate	★★★★★
Pre-cleaner bowl	★★★★★

ENGINE DETAILS AND CONDITION

Engine number	THY05419
Arrangement number	220-1429
Air cleaner	Clean
Anti-freeze level °C	-16°C

Diesel anti-freeze added	Yes
Diesel level ok	Yes
Cooling liquid level ok	Yes
Engine oil level ok	Yes
Exhaust manifold	★★★★★
Muffler	★★★★★
Exhaust stack	★★★★★
Hoses	★★★★★
Good cold start	Yes
Engine power	★★★★★
Blow by	★★★★★
Knocking	No
Compression in the radiator	No
Water in the oil	No
Oil in the water	No
Smoke	Normal
Engine leaks	No
Belts and pulleys	★★★★★
Fan	★★★★★
Radiator	★★★★★

UNDERCARRIAGE LEFT IN LIFE IN %

Overall condition	70% GOOD!
Chains	70%
Bushings	80%
Sprockets	90%
Idlers	80%
Bottom rollers	50%
Top rollers	70%
Track pads	60%

OPERATOR STATION

Hourmeter	Working, hours certified by Caterpillar
Air conditioning	Not Working
Heater	Not Working
Gauges	Working
Switches	★★★★★
Display	★★★★★
Warning	No Warnings Available

Cabin glass	Not broken
Windshield wipers	Not Working
Interior lights	Working
Cabin floor	★★★★★
Interior roof	★★★★★
Seat	★★★★★

STEERING

Steering operating condition	★★★★★
------------------------------	-------

FRAME AND BLADE

Moldboard skin	★★★★★
Cutting edge	★★★★★
Play dozer frame	★★★★★
Play blade pin	★★★★★
Play push arms	★★★★★
Play lift cylinder	★★★★★
Lift cylinders leaking	No
Play tilt cylinder	★★★★★
Tilt cylinder leaking	No
Play equaliser bar	★★★★★
Cracks or welds	Yes

RIPPER

Play ripper	★★★★★
Cylinders leaking	No
Ripper frame	★★★★★
Number of ripper shanks	3

HYDRAULICS

Hydraulic oil level ok	Yes
Hydraulic lines and fittings	★★★★★
Hydraulic tank/sight glass and cap	★★★★★
Hydraulic valves leaking	No
Noise hydraulic pump normal	Yes
Operating condition hydraulics	★★★★★

BRAKE

Service brake operation	★★★★★
Parking brake operation	★★★★★

DRIVE TRAIN/TRANSMISSION

Transmission fully operational in all gears forward and reverse	Yes
Transmission oil level ok	Yes
Transmission noisy	No
Oil level left final drive ok	Yes
Oil level right final drive ok	Yes

ELECTRICAL, STARTING AND CHARGING SYSTEM

Alternator functioning	Yes
Wiring	★★★★★
Batteries	★★★★★
Starter	★★★★★
Cabin lights working	Yes
Tail lights working	No

SAFETY ITEMS

Backup alarm	Working
Seat belt	Available
Horn	Working

New/Excellent
★★★★★

Very good
★★★★★

Good
★★★★★

Fair
★★★★★

Poor
★★★★★

