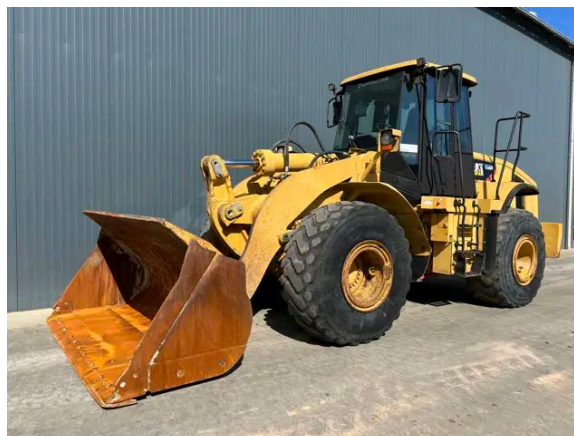


CATERPILLAR 950H - FULL STEERING - 3RD VALVE

Description

Caterpillar 950H, Engine and model Caterpillar C7, 146 kW, CE, Erops cabin, 23.5R25, GP bucket with bolt on edge, Width of the bucket 2.78m, 3rd valve, Complete steering wheel, Autoshift, Hours certified by Caterpillar, In good and clean condition.



Year	2007
Hours	8946
Weight	18.500 kg
Serial number	CAT0950HTN1A00820
Reference	208776

[Download photos](#)


CONTACT US:
SALES@SMITMA.COM
+31(0)773999840

New/Excellent
★★★★★

Very good
★★★★☆

Good
★★★☆☆

Fair
★★☆☆☆

Poor
★☆☆☆☆

INSPECTION REPORT

FEATURES

Engine and model	Caterpillar C7
Engine power	146 kW
CE	✓
Erops cabin	✓
Tyre size	23.5R25
Bucket	GP bucket with bolt on edge
Width of the bucket	2.78m
Steering	Complete steering wheel
Autoshift	✓
Overall condition	In good and clean condition.

DOCUMENTS

Parts book	✓
Operation manual	✓

GENERAL APPEARANCE

Stamped serial number checked	Yes
Serial number plate checked	Yes
Paint	★★★★★
Decals	★★★★★
Bonnet	★★★★★
Steps/ladders	★★★★★
Grab irons	★★★★★
Cabin	★★★★★
Pre-cleaner bowl	★★★★★

ENGINE DETAILS AND CONDITION

Engine number	C7C04054
Air cleaner	New
Anti-freeze level °C	-32°C
Diesel anti-freeze added	Yes
Diesel level ok	Yes
Cooling liquid level ok	Yes
Engine oil level ok	Yes
Exhaust manifold	★★★★★

Muffler	★★★★★
Exhaust stack	★★★★★
Engine supports	★★★★★
Hoses	★★★★★
Good cold start	Yes
Engine power	★★★★★
Blow by	★★★★★
Knocking	No
Compression in the radiator	No
Water in the oil	No
Oil in the water	No
Smoke	Normal
Engine leaks	No
Belts and pulleys	★★★★★
Fan	★★★★★
Radiator	★★★★★

OPERATOR STATION

Hourmeter	Working, hours certified by Caterpillar
Air conditioning	Not working
Heater	Not working
Gauges	Few don't work
Switches	★★★★★
Display	★★★★★
Warning	No warnings available
Mirrors	Not broken
Cabin glass	Not broken
Windshield wipers	Working
Interior lights	Working
Cabin floor	★★★★★
Interior roof	★★★★★
Seat	★★★★★

BUCKET

Overall condition of the bucket	★★★★★
Bottom	★★★★★
Sides	★★★★★
Cutting edge	★★★★★

FRAME

Play articulation point	★ ★ ★ ★ ★
Note: Little play steering cylinders	
Play loading frame	★ ★ ★ ★ ★
Play bucket pins	★ ★ ★ ★ ★
Crack or welds	No

HYDRAULICS

Hydraulic oil level ok	Yes
Hydraulic lines and fittings	★ ★ ★ ★ ★
Hydraulic tank/sight glass and cap	★ ★ ★ ★ ★
Hydraulic valves leaking	No
Noise hydraulic pump normal	Yes
Operating condition hydraulics	★ ★ ★ ★ ★

BRAKE

Service brake operation	★ ★ ★ ★ ★
Parking brake operation	★ ★ ★ ★ ★
Compressor	★ ★ ★ ★ ★

DRIVE TRAIN/TRANSMISSION

Transmission fully operational in all gears forward and reverse	Yes
Transmission oil level ok	Yes
Transmission noisy	No
Oil level front axle ok	Yes
Oil level rear axle ok	Yes

ELECTRICAL, STARTING AND CHARGING SYSTEM

Alternator functioning	Yes
Wiring	★ ★ ★ ★ ★
Batteries	★ ★ ★ ★ ★
Starter	★ ★ ★ ★ ★
Cabin lights working	No
Tail lights working	No

SAFETY ITEMS

Seat belt	Available
Horn	Working

TYRES

FRONT LEFT

Tread dept in mm 18mm

REAR LEFT

Tread dept in mm 10mm

REAR RIGHT

Tread dept in mm 2mm

FRONT RIGHT

Tread dept in mm 15mm

New/Excellent



Very good



Good



Fair



Poor



Copyright Smilma BV

