

CATERPILLAR 730C2

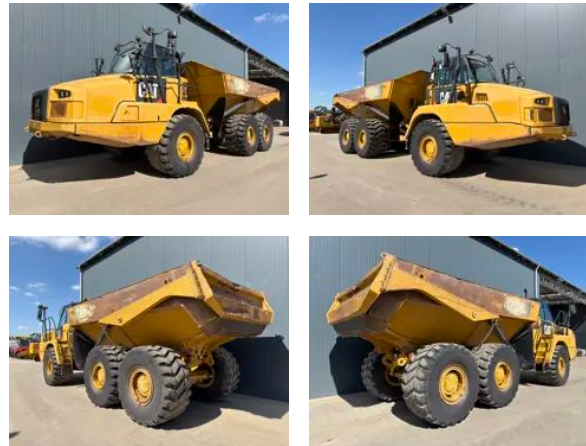
Description

Caterpillar 730C2, Engine Caterpillar , C13, 276 kW, CE, Air conditioning, 6x6, Erops cabin, 750/65R25 Goodyear TL-3A+ 70%, Goodyear , Retarder, Big tailgate, Backup camera, Backup alarm, Central lubrication, Beacon, AM/FM radio, Hours certified by Caterpillar, In very good and very clean condition.



Year	2016
Hours	10723
Weight	24100 kg
Serial number	CAT0730CC2T400135
Reference	211874

[Download photos](#)



CONTACT US:
SALES@SMITMA.COM
+31(0)773999840

New/Excellent ★★★★★	Very good ★★★★☆	Good ★★★☆☆	Fair ★★★☆☆	Poor ★★☆☆☆
------------------------	--------------------	---------------	---------------	---------------



INSPECTION REPORT

FEATURES

Engine	Caterpillar
Engine model	C13
Engine power	276 kW
CE	✓
Air conditioning	✓
Configuration	6x6
Erops cabin	✓
Retarder	✓
Tailgate	Big tailgate
Backup camera	✓
Backup alarm	✓
Beacon	✓
Hours	Hours certified by Caterpillar
Overall condition	In very good and very clean condition.

DOCUMENTS

Parts book	✓
Operation manual	✓

GENERAL APPEARANCE

Stamped serial number checked	Yes
Serial number plate checked	Yes
Paint	★★★★☆☆
Decals	★★★☆☆
Bonnet	★★★★☆☆
Chassis	★★★★☆☆
Steps/ladders	★★★★☆☆
Grab irons	★★★★☆☆
Cabin	★★★★☆☆
Transmission guard	★★★★☆☆

ENGINE DETAILS AND CONDITION

Engine number	T4F04944
Arrangement number	3733870
Air cleaner	Clean

Anti-freeze level °C	-20°C
Diesel anti-freeze added	Yes
Diesel level ok	Yes
Cooling liquid level ok	Yes
Engine oil level ok	Yes
Exhaust manifold	★★★★★
Muffler	★★★★★
Exhaust stack	★★★★★
Engine supports	★★★★★
Hoses	★★★★★
Good cold start	Yes
Engine power	★★★★★
Blow by	★★★★★
Knocking	No
Compression in the radiator	No
Water in the oil	No
Oil in the water	No
Smoke	Normal
Engine leaks	No
Belts and pulleys	★★★★★
Fan	★★★★★
Radiator	★★★★★

OPERATOR STATION

Hourmeter	Working, hours certified by Caterpillar
Total kilometers	51960 km
Air conditioning	Working
Heater	Working
Gauges	Working
Switches	★★★★★
Display	★★★★★
Warning	No warnings available
Mirrors	Not broken
Cabin glass	Not broken
Windshield wipers	Working
Interior lights	Working
Cabin floor	★★★★★
Interior roof	★★★★★
Seat	★★★★★

Door lock

Working

FRAME

Play front suspension frame	★★★★★
Play middle suspension frame	★★★★★
Play rear suspension frame	★★★★★
Play articulation point	★★★★★
Shock absorbers articulation point	★★★★★
Play body tipping pin	★★★★★
Bearings tipping cylinders	★★★★★
Shock absorbers body	★★★★★
Play rear equalizer	★★★★★
Shock absorbers equalizer	★★★★★

BODY

Condition outside body	★★★★★
Body plates	★★★★★
Condition tailgate	★★★★★

HYDRAULICS

Hydraulic oil level ok	Yes
Hydraulic lines and fittings	★★★★★
Hydraulic tank/sight glass and cap	★★★★★
Hydraulic valves leaking	No
Noise hydraulic pump normal	Yes
Operating condition hydraulics	★★★★★

BRAKE

Brakelines	★★★★★
Service brake operation	★★★★★
Parking brake operation	★★★★★
Compressor	★★★★★
Brake pedal	★★★★★

DRIVE TRAIN/TRANSMISSION

Transmission fully operational in all gears forward and reverse	Yes
Transmission oil level ok	Yes
Transfer gear box oil level ok	Yes
Transmission noisy	No

Differential lock/unlock working	Yes
Oil level front axle ok	Yes
Oil level middle axle ok	Yes
Oil level rear axle ok	Yes
Oil level front left final drive ok	Yes
Oil level middle left final drive ok	Yes
Oil level rear left final drive ok	Yes
Oil level rear right final drive ok	Yes
Oil level middle right final drive ok	Yes
Oil level front right final drive ok	Yes

ELECTRICAL, STARTING AND CHARGING SYSTEM

Alternator functioning	Yes
Wiring	★★★★★
Batteries	★★★★★
Starter	★★★★★
Cabin lights working	Yes
Tail lights working	Yes
Additional work lights working	Yes

SAFETY ITEMS

Backup alarm	Working
Backup camera	Working
Seat belt	Available
Horn	Working
Beacon	Working

TYRES

FRONT LEFT	
Tread dept in mm	31mm
MIDDLE LEFT	
Tread dept in mm	32mm
REAR LEFT	
Tread dept in mm	30mm
Percentage life remaining	70%
REAR RIGHT	
Tread dept in mm	32mm

Percentage life remaining 70%

MIDDLE RIGHT

Tread dept in mm 34mm

Percentage life remaining 70%

FRONT RIGHT

Tread dept in mm 34mm

Percentage life remaining 70%

New/Excellent



Very good



Good



Fair



Poor

