

## USED MACHINERY - Information

Email: sales@thinkrpm.co.uk Tel: 01792 949653



RPM REFERENCE:	<b>PC2026-0114</b>
MANUFACTURER:	<b>CROSS WRAP</b>
TYPE:	<b>BALER</b>
MODEL:	<b>CWD 2200LW</b>
YEAR:	<b>2011</b>
CONDITION:	<b>EXCELLENT</b>
PRICE:	<b>POA</b>



## Description

Feed in Conveyor 2M  
Turntable conveyor  
Shunting conveyor  
Discharge Conveyor 5M  
Belt widths 1600mm  
Belt height from the ground 1100mm  
Control panel and plc control  
Cross wrap frame and telescopic arms  
Hydraulic Powerpack  
Emergency stop switches

Four belts in total. Feed, two centres and the longer dispatch belt. Safety guards both side of spinning table area.

### **Over £ 12k spent on this machine**

External Servicing Arm 1 Locking Mechanism

External Servicing Labour Including Travel, Mileage 2 Men x 15 Hours Each

External Servicing as J12347 Report, and Quotation Q7660R. Sensor.

External Servicing 40mm Bearing

External Servicing Nylon Runner

External Servicing Arm 2 Frame

External Servicing Refurbished Slew Ring

External Servicing Hydraulic Unit Filter

External Servicing Tension Rollers

External Servicing 35mm Rollers

External Servicing Shaft Insert Stretch Unit

External Servicing Bearing

External Servicing 100mm Wheels

External Servicing Inside Shaft

External Servicing Outside Shaft

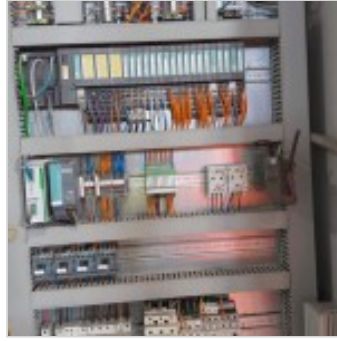
External Servicing 8000 Ring Belt

Supply of Replacement HMI Screen

## **Materials Handled**

---

- > C&D Waste
- > C&I Waste
- > Comingled Material Dry / Dry Mixed Recycling
- > Paper
- > Plastics
- > RDF/SRF



**Recycling Plant & Machinery Ltd**  
 Beechwood House, Bryntwyd, Llangyfelach, Swansea, SA5 7LP  
 Office: +44 (0) 1792 702 173 Tel: +44 (0) 7834 585 247 Email: sales@thinkrpm.co.uk  
 Company Registration No. 7467439