

RC 42 Technical Data

Diesel Forklift Truck

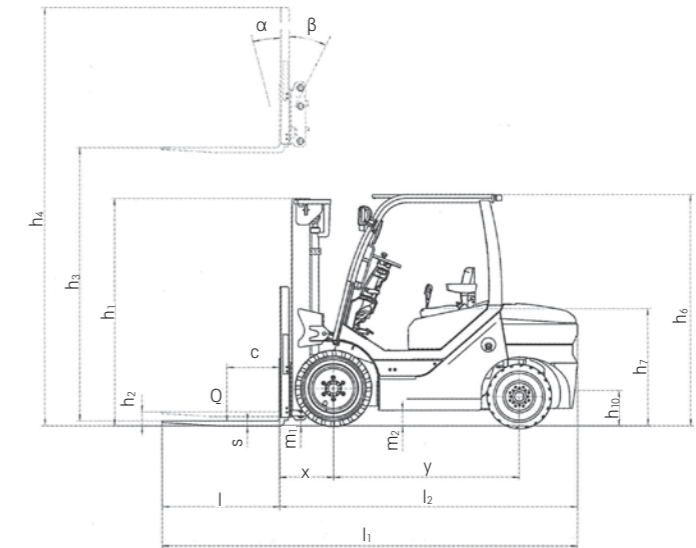
RC 42-40

RC 42-50

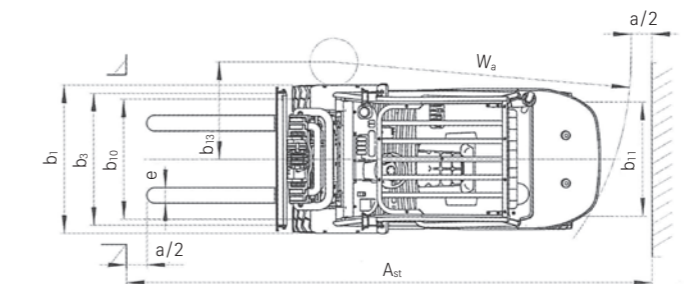




Distinguishing marks	1.1		Manufacturer		STILL		STILL	
	1.2		Manufacturer's type designation		RC 42-40		RC 42-50	
Weights	1.2.1		Manufacturer's type number		4331		4333	
	1.3		Drive		Diesel		Diesel	
Tyres/chassis	1.4		Operation		Seated		Seated	
	1.5		Rated capacity/rated load		Q	kg	4000	5000
Basic dimensions	1.6		Load centre distance		c	mm	500	500
	1.8		Load distance		x	mm	562	567
Performance data	1.9		Wheel base		y	mm	2000	2000
	2.1		Service weight			kg	7240	6560
IC engine	2.2		Axle load, laden		front/rear	kg	10240/1100	9300/1280
	2.3		Axle load, unladen		front/rear	kg	3800/3440	3210/3350
Miscellaneous	3.1		Tyres		Superelastic		Superelastic	
	3.2		Tyre size		front		300*15/20PR	300*15/20PR
Performance data	3.3		Tyre size		rear		7.00-12/12PR	7.00-12/12PR
	3.5		Wheels, number (x = driven wheels)		front/rear		2x/2	2x/2
Performance data	3.6		Track width		front	b ₁₀	mm	1180
	3.7		Track width		rear	b ₁₁	mm	1190
Performance data	4.1		Tilt of mast/fork carriage		forward/backward	α/β	°	6/12
	4.2		Height of mast		when retracted	h ₁	mm	2390
Performance data	4.3		Free lift		h ₂	mm	150	150
	4.4		Lift		h ₃	mm	3000	3000
Performance data	4.5		Height of mast		when extended	h ₄	mm	4275
	4.7		Height above protective roof (cab)		h ₆	mm	2260	2260
Performance data	4.8		Seat height relating to SIP/stand height		h ₇	mm	1315	1315
	4.12		Coupling height		h ₁₀	mm	380	380
Performance data	4.19		Total length		l ₁	mm	4180	4230
	4.20		Length including fork backs		l ₂	mm	3110	3160
Performance data	4.21		Total width		b ₁	mm	1485	1485
	4.22		Fork dimensions ISO 2331		s/e/l	mm	50/150/1070	55/150/1070
Performance data	4.23		Fork carriage ISO 2328, class/type A, B				III A	III A
	4.24		Fork carriage width		b ₃	mm	1380	1380
Performance data	4.31		Ground clearance, laden, below mast		m ₁	mm	145	145
	4.32		Ground clearance, centre of wheelbase		m ₂	mm	180	180
Performance data	4.33		Aisle width for pallets 1000 x 1200 crossways		A _{st}	mm	4552	4597
	4.34		Aisle width for pallets 800 x 1200 lengthways		A _{st}	mm	4752	4797
Performance data	4.35		Turning radius		W _a	mm	2790	2830
	4.36		Smallest pivot point distance		b ₁₃	mm	900	900
Performance data	5.1		Driving speed		laden/unladen	km/h	24,4/25,3	21/23
	5.2		Lifting speed		laden/unladen	m/s	0,44/0,53	0,40/0,48
Performance data	5.3		Lowering speed		laden/unladen	m/s	0,42/0,29	0,53/0,41
	5.5		Drawbar pull		laden/unladen	kN	25/24	33/21
Performance data	5.7		Gradeability		laden/unladen	%	20/20	20/20
	5.10		Service brake		Mechanical/hydraulic		Mechanical/hydraulic	
Performance data	7.1		Acceleration time		Mitsubishi S6S		Mitsubishi S6S	
	7.2		Engine performance in accordance with ISO 1585		kW	52	55,4	52
Performance data	7.3		Nominal speed		l/min	2300	2000	2300
	7.4		Number of cylinders			6	6	6
Performance data	7.4.1		Capacity		cm ³	4966	EU Step 1	4966
	7.9		Emission level acc. to EU Regulation 2016/1628		Stage III a		Stage III a	
Performance data	7.9		Vehicle electrical system voltage		V	12	12	
	8.1		Type of drive unit		Torque converter		Torque converter	
Performance data	10.1		Operating pressure for attachments		bar	200	200	
	10.2		Oil volume for attachments		l/min	101	101	
Performance data	10.4		Fuel tank, capacity		l	90	90	
	10.8		Towing coupling, type DIN 15170		Bolt		Bolt	



Side view



Top view

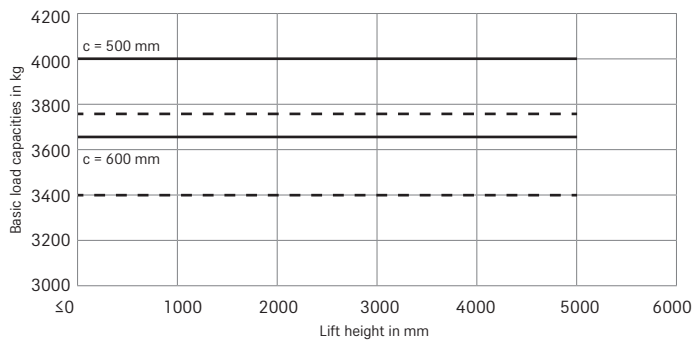
Mast Tables

RC 42-40/RC 42-50			Telescopic mast					HiLo mast			Triplex mast								
			h ₃	mm	3000	4000	4500	5000	3000	3500	4000	3920	4350	4500	4700	5000	5500	6000	
	Height	mast lowered	h ₁	mm	2275	2425	2825	3075	3325	2390	2640	2890	2245	2390	2441	2507	2640	2807	3005
	Free lift		h ₂	mm	150	150	150	150	150	1544	1794	2044	1399	1544	1595	1661	1794	1961	2159
	Height	mast extended	h ₄	mm	4275	4575	5275	5775	6275	4275	4775	5275	5195	5625	5775	5975	6275	6771	7275
	Tilt of mast	forward/backward	α/β	°	6/12	6/12	6/8	6/6	3/6	6/12	6/12	6/8	6/6	6/6	6/6	6/6	6/6	3/6	3/6
	Tyres	front/rear			28*9-15/14PR//6,50-10/10PR														
	Track	front/rear	b ₁₀ /b ₁₁	mm	1180/1190														
	Overall width		b ₁	mm	1485														

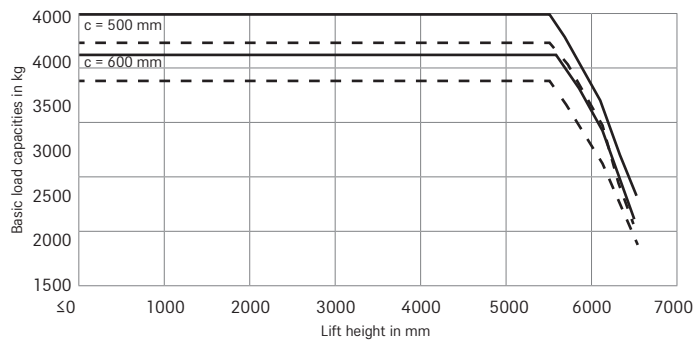
RC 42-40/50 Diesel Forklift Truck

Basic Load Capacities

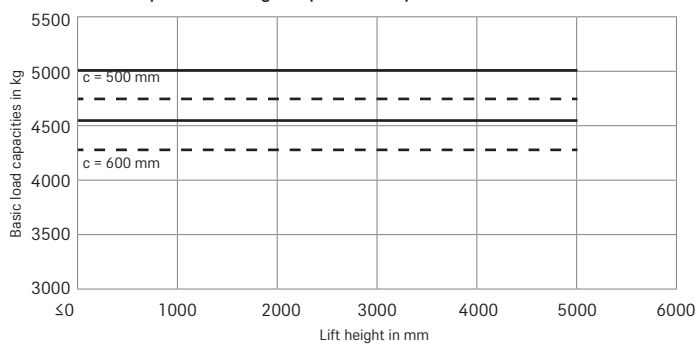
RC 42-40 Telescopic/HiLo - single superelastic tyres



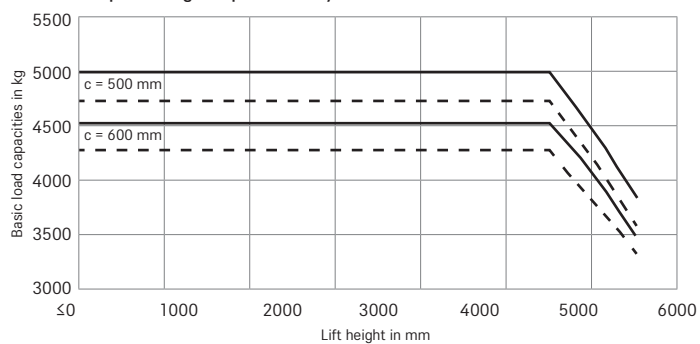
RC 42-40 Triplex - single superelastic tyres



RC 42-50 Telescopic/HiLo - single superelastic tyres



RC 42-50 Triplex - single superelastic tyres



Standard
 With integrated sideshift fork positioner and standard forks
 The values may vary depending on the truck equipment

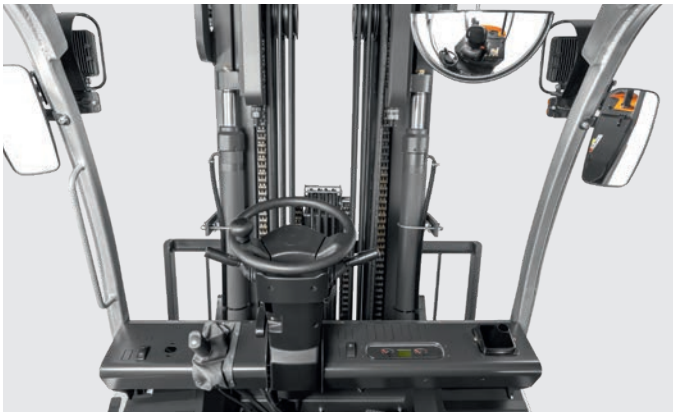
RC 42-40/50 Diesel Forklift Truck Detailed Photos



Slim mast profiles ensure a good view around the mast to keep an eye on forks and fork carriage during



The ergonomically designed operator platform is spacious and well organised with intuitive operating controls



From their seat in the cab, the operator has a perfect view of everything; the dashboard is well organised and visibility through the mast is excellent



The seamlessly adjustable steering column allows operators to select the most comfortable driving position



The multi-lever controls give the operator maximum control when using the lifting hydraulic system



Narrow bars on the overhead guard ensure optimum visibility and maximum safety

RC 42-40/50 Diesel Forklift Truck

The access to success

High performance: High-performance and reliable industrial motor

Everything in sight: Optimum view of forks and load carriers thanks to slim mast profile

Maximum safety: Robust overhead guard maximises the operator's view in all directions



The RC 42 is sure to put you on the road to success. A truck that has been developed for all those who are looking for a robust counterbalanced truck in the low-cost segment, ready for immediate use - without having to forgo the proven STILL quality. Available in a diesel version and with a lifting capacity of 4-5 tonnes, the RC 42 is a versatile all-rounder that offers an unmatched price-performance ratio. Whether you are handling containers, trailers or pallets, on ramps or on the flat, you can count on this counterbalanced forklift truck to safely

transport your goods to their destination. The suspension system for the operator's cab absorbs any jolts and vibrations caused by uneven floors; the hydraulic system is also very easy to control; and the operator enjoys excellent visibility on all sides. Furthermore, you can choose from a wide range of equipment options to suit your particular logistics planning requirements. It might be an entry-level truck, but with all these benefits, the RC 42 more than lives up to STILL's exceptional quality standards.

The 'Simply Efficient' factors: Performance attributes as a measure of economic efficiency



Simply easy

- Precise operation: Intuitive and precise load handling made easy thanks to separate inch pedal
- Direct transmission control: Quiet and smooth driving experience, even at low speeds and on ramps
- Comfortable operator's cab: Excellent suspension to absorb jolts and vibrations; comfortable seat; and large footwell with foot-operated parking brake



Simply powerful

- Reliable performance: Powerful industrial engine for reliable performance
- Adaptable to on-site conditions: Choice of mast and fork lengths to suit different applications
- Effortless storage of heavy loads: High residual load capacity ensures even the heaviest loads can be lifted to the required height
- Well-equipped for tough working conditions: Dusty environments pose no problem thanks to additional air filter



Simply safe

- Safe goods handling: Excellent excellent visibility on all sides of the truck
- Safe entry and exit: Wide metal step with anti-slip design
- Safe and ergonomic operation: Long hydraulic control elements and separate levers for each function
- Safe working in dark environments: High-spec lighting as standard
- Safe reversing: Rear handhold with integrated horn



Simply flexible

- Choice of different cab variants: Forklifts available with full and semi cab designs
- Flexible options to suit any application: Wide range of equipment and attachments to choose from

RC 42-40/50 Diesel Forklift Truck

Equipment Variants



		Diesel	
		RC 42-40	RC 42-50
Driver's cab	Steel overhead guard with open design	●	●
	Various weatherproofing options	○	○
	Canvas cab	○	○
	Driver's cab	○	○
	Door on right and left with double sliding windows	○	○
	Tinted front and rear windscreen, plastic roof window	○	○
	Front and rear windscreen wiper and wash system	○	○
	Handhold for reversing located on back right-hand side	●	●
	Comfortable operator's seat	●	●
	Warm water heating	○	○
Fan to keep operator platform cool in warm conditions	—	—	
Mast	Telescopic free view mast with and without full free lift	○	○
	Triplex free view mast	○	○
	Load backrest	●	●
	Various fork carriage widths	○	○
	Tilt angle 6/12 degrees, front/rear tilt	●	●
Tyres	Sideshift fork positioner	○	○
	Super-elastic tyres, single or twin	○	○
	Super-elastic tyres, natural colours, single or twin	○	○
Hydraulics	Pneumatic tyres	●	●
	Single or double-acting ancillary hydraulic system for controlling attachments	○	○
	Ergonomic and sensitive multi-lever operating controls	●	●
	High-quality multi-purpose universal oil for combustion engine and drive axle - for use all year round	●	●
	Low-temperature hydraulic oil for combustion engine and drive axle - for forklifts operating in low temperatures down to -20 °C	○	○
	Valve block preparation for controlling attachments with one or two functions without hose connections	○	○
	Dry air filter with additional pre-filter	—	—
Brake	Larger dry air filter	—	—
	Dry air filter	●	●
	Raised exhaust pipe	●	●
	Powerful industrial diesel engine	●	●
	Diesel fuel tank, 90 litres	●	●
Safety	Mechanical/hydraulic operating brake	●	●
	Low centre of gravity and steering axle with high self-aligning bearing for optimum safety	●	●
	Simple and safe entry and exit via large non-slip steps	●	●
	Audible alarm	●	●
	LED lighting system	○	○
	Audible alarm when reversing	●	●
	Flashing light	○	○
	Panoramic mirror	●	●
External rear mirror	○	○	

● Standard ○ Optional — Not available



STILL GmbH

Berzeliusstr. 10

22113 Hamburg

Germany

Tel.: +49 40 73 39 20 00

Fax: +49 40 73 39 20 01

info@still.de

For further information please visit

www.still.eu

STILL is certified in the following areas: Quality management, occupational safety, environmental protection and energy management.

