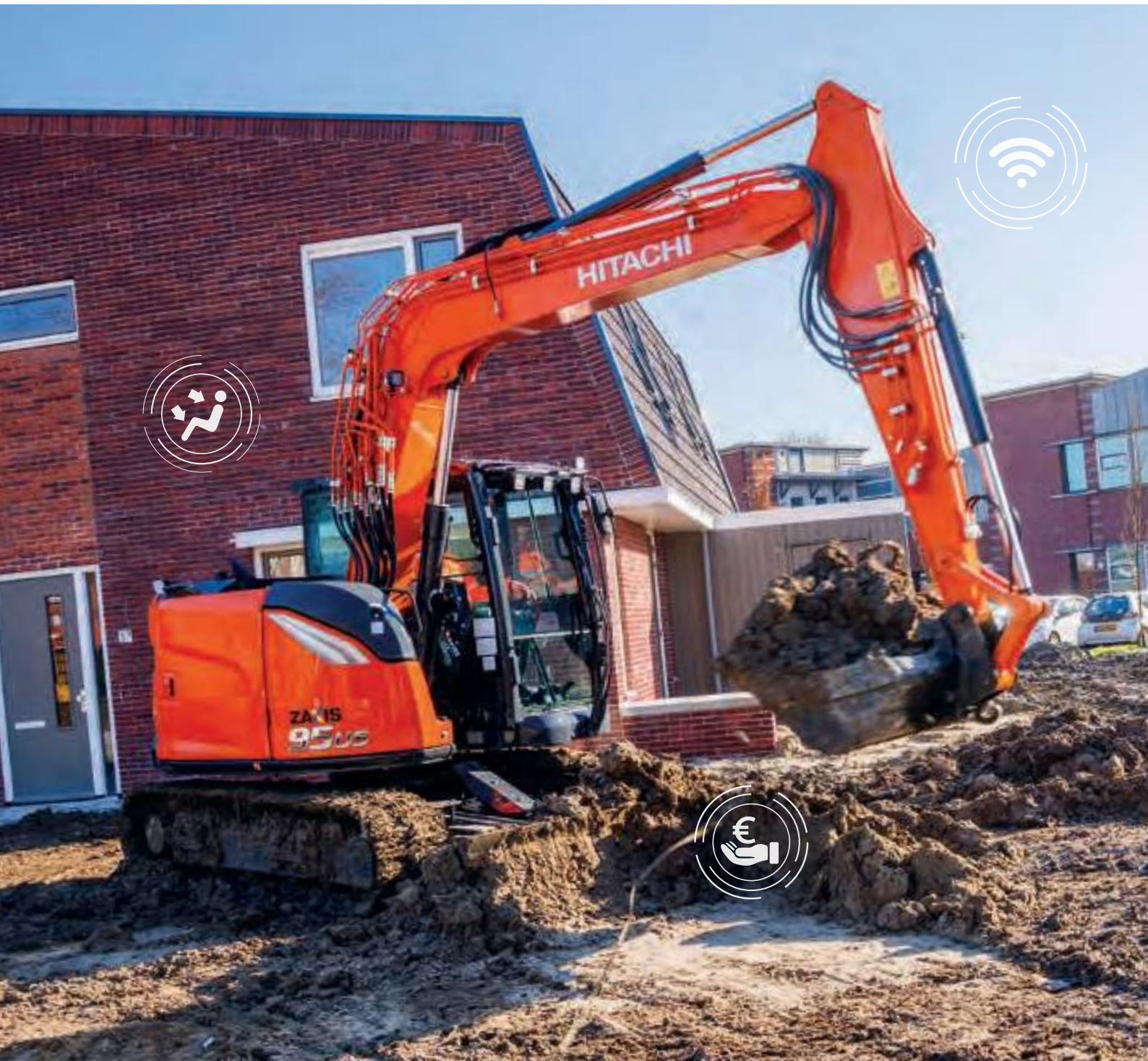


ZAXIS-7 series

HITACHI

Reliable Solutions

# ZAXIS 95US / USB



## HYDRAULIC EXCAVATOR

Model code : ZX95US-7

Engine rated power : 50.4 kW

Operating weight : 8 320 – 9 020 kg

Bucket ISO heaped : 0.28 m<sup>3</sup>

Model code : ZX95USB-7

Engine rated power : 50.4 kW

Operating weight : Mono boom : 8 760 – 9 460 kg / 2 Piece boom : 9 150 – 9 850 kg

Bucket ISO heaped : 0.28 m<sup>3</sup>

# SPECIFICATIONS

ENGINE	
Model	4TNV98CT
Type	4-cycle water-cooled, common rail direct injection exhaust turbo charger
Aspiration	Cooled EGR
Aftertreatment	Muffler filter
No. of cylinders	4
Rated power	
ISO 14396 : 2002 gross	50.4 kW at 2 000 min <sup>-1</sup>
ISO 9249 : 2007 net	49.8 kW at 2 000 min <sup>-1</sup>
Maximum torque	292.9 Nm at 1 300 min <sup>-1</sup>
Piston displacement	3.318 L
Bore and stroke	98 mm x 110 mm
Batteries	2 x 12 V / 60 Ah

HYDRAULIC SYSTEM				
<b>Hydraulic Pumps</b>				
Main pumps	3 variable displacement axial piston pumps			
Maximum oil flow	2 x 72 L/min			
	1 x 56 L/min			
Pilot pump	1 gear pump			
Maximum oil flow	20.0 L/min			
<b>Hydraulic Motors</b>				
Travel	2 variable displacement axial piston motors			
Swing	1 axial piston motor			
<b>Relief Valve Settings</b>				
Implement circuit	28.0 MPa			
Swing circuit	26.5 MPa			
Travel circuit	31.4 MPa			
Pilot circuit	3.9 MPa			
<b>Hydraulic Cylinders</b>				
<b>ZX95US-7</b>				
	Quantity	Bore	Rod diameter	Stroke
Boom	1	115 mm	70 mm	885 mm
Arm	1	95 mm	60 mm	900 mm
Bucket	1	85 mm	55 mm	730 mm
Blade	1	120 mm	70 mm	145 mm
<b>ZX95USB-7</b>				
	Quantity	Bore	Rod diameter	Stroke
Boom	1	115 mm	70 mm	915 mm
Arm	1	95 mm	60 mm	900 mm
Bucket	1	85 mm	55 mm	730 mm
Blade	1	120 mm	70 mm	145 mm
Boom swing	1	110 mm	60 mm	563 mm
Positioning*1	2	110 mm	60 mm	432 mm

\*1 : For 2-Piece boom

UPPERSTRUCTURE	
<b>Revolving Frame</b>	
D-section frame for resistance to deformation	
<b>Swing Device</b>	
Axial piston motor with planetary reduction gear is bathed in oil. Swing circle is single-row. Swing parking brake is spring-set/hydraulic-released disc type.	
Swing speed	10.1 min <sup>-1</sup>
Swing torque	16.6 kNm
<b>Operator's Cab</b>	
Independent spacious cab, 1 025 mm wide by 1 654 mm high, conforming to ISO* Standards. Reinforced glass windows on 4 sides for visibility. Front windows (upper and lower) can be opened. Reclining seat.	
* International Organization for Standardization	

UNDERCARRIAGE	
<b>Tracks</b>	
Tractor-type undercarriage. Welded track frame using selected materials. Side frame welded to track frame	
<b>Numbers of Rollers on Each Side</b>	
Upper rollers	1
Lower rollers	5
Track shoes	40
<b>Travel Device</b>	
Each track driven by 2-speed axial piston motor. Parking brake is spring-set/hydraulic-released disc type. Automatic transmission system: High-Low.	
Travel speeds	High : 0 to 5.0 km/h
	Low : 0 to 3.1 km/h
Maximum traction force	65.2 kN
Gradeability	70% (35 degree) continuous

SERVICE REFILL CAPACITIES	
Fuel tank	125.0 L
Engine coolant	13.1 L
Engine oil	12.3 L
Travel device (each side)	1.2 L
Hydraulic system	100.0 L
Hydraulic oil tank	52.0 L

ENVIRONMENT		
Engine Emissions	EU Stage V	
<b>Sounds Level</b>		
Sound level in cab according to ISO 6396 :2008	ZX95US-7	LpA 70 dB(A)
	ZX95USB-7	LpA 69 dB(A)
External sound level according to ISO6395 : 2008 and EU Directive 2000/14/EC	ZX95US-7	LwA 99 dB(A)
	ZX95USB-7	LwA 99 dB(A)
<b>Air Conditioning System</b>		
The air conditioning system contains fluorinated greenhouse gases. Refrigerant type: HFO-1234yf, GWP: 4, Amount: 0.65 kg, CO <sub>2</sub> e: 1.22 ton		

## WEIGHTS AND GROUND PRESSURE

### Operating Weight and Ground Pressure

			ZX95US-7	
Boom type			Monoblock	
Shoe type	Shoe width (mm)	Arm length (m)	kg	kPa
Grouser shoe	450	2.12	8 410	37
	600	2.12	8 590	29
Rubber shoe	450	2.12	8 320	37
Pad crawler shoe	450	2.12	8 450	37

Including 0.28 m<sup>3</sup> (ISO 7451:2007 heaped) bucket weight 211 kg and counterweight 1 165 kg.

			ZX95USB-7			
Boom type			Monoblock		2-Piece	
Shoe type	Shoe width (mm)	Arm length (m)	kg	kPa	kg	kPa
Grouser shoe	450	1.62	-	-	9 170	41
		2.12	8 850	39	9 240	41
	600	1.62	-	-	9 350	31
		2.12	9 030	30	9 420	31
Rubber shoe	450	1.62	-	-	9 080	40
		2.12	8 760	39	9 150	41
Pad crawler shoe	450	1.62	-	-	9 210	41
		2.12	8 890	39	9 280	41

Including 0.28 m<sup>3</sup> (ISO 7451:2007 heaped) bucket weight 211 kg and counterweight 1 165 kg.

## BUCKET AND ARM DIGGING FORCE

Unit: kN

		ZX95US-7
Boom type		Monoblock boom
Arm length		2.12 m
Bucket digging force* ISO 6015 : 2006		57.5
Bucket digging force SAE: PCSA		50.1
Arm crowd force* ISO 6015 : 2006		34.5
Arm crowd force SAE : PCSA		33.0

\* At power boost

Unit: kN

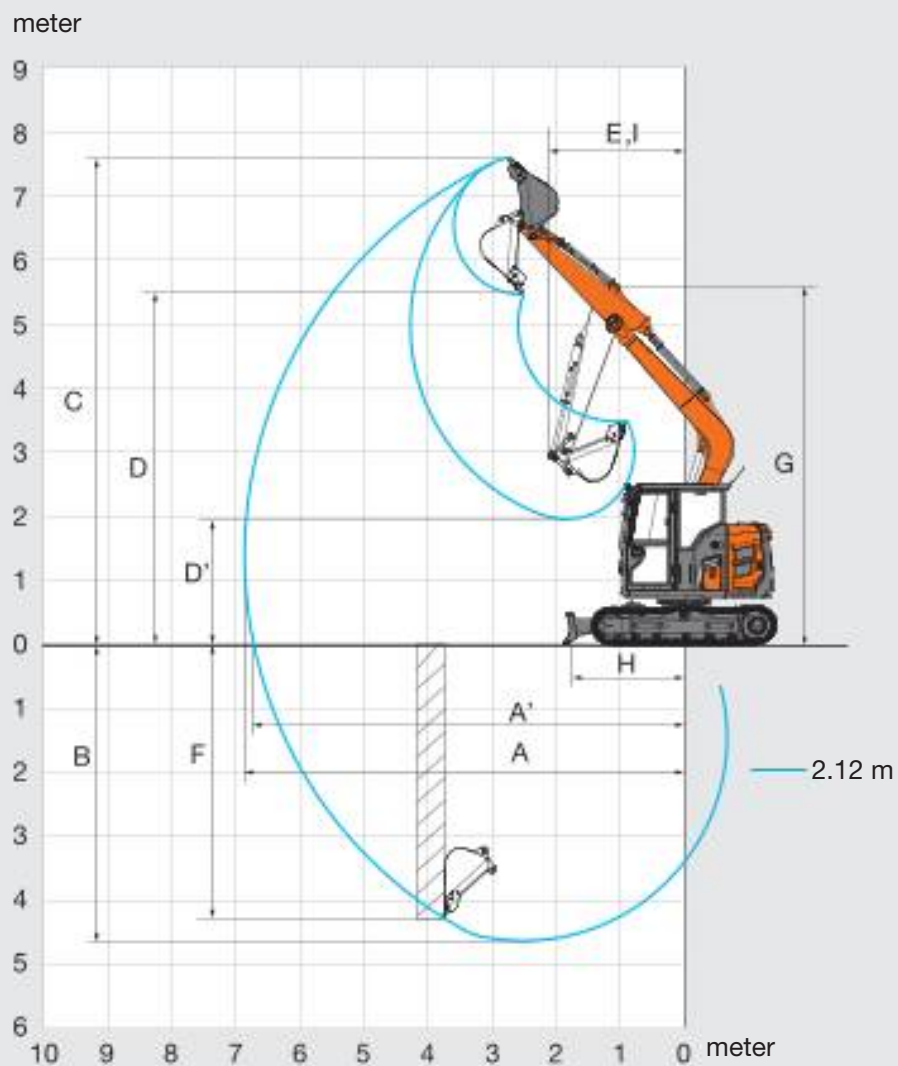
		ZX95USB-7	
Boom type		Monoblock boom	2-Piece boom
Arm length		2.12 m	1.62 m      2.12 m
Bucket digging force* ISO 6015 : 2006		57.5	57.5      57.5
Bucket digging force SAE: PCSA		50.1	50.1      50.1
Arm crowd force* ISO 6015 : 2006		34.5	40.2      34.5
Arm crowd force SAE : PCSA		33.0	38.1      33.0

\* At power boost

# SPECIFICATIONS

ZX95US-7

## WORKING RANGES

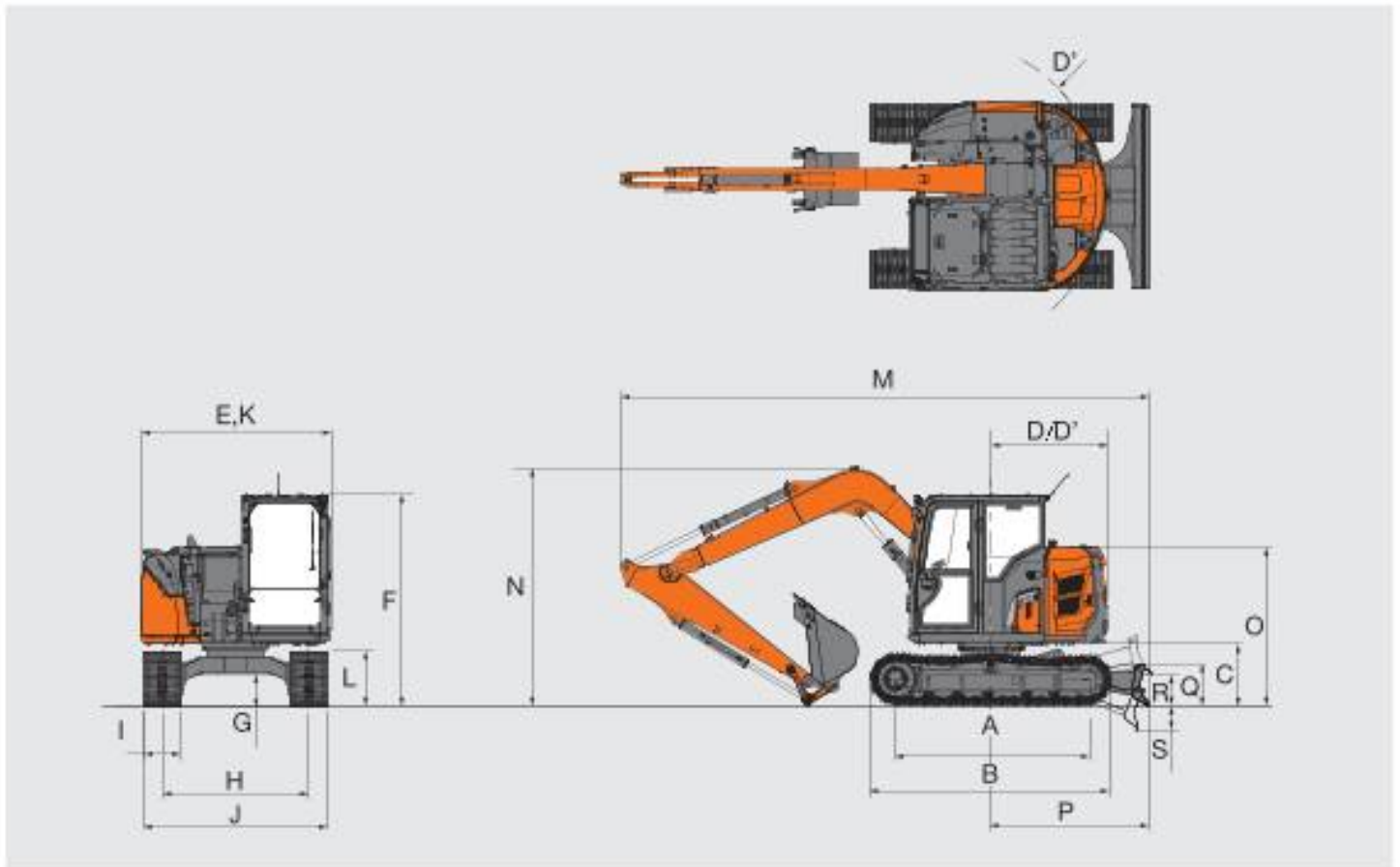


Unit: mm

	ZX95US-7
	Monoblock boom
Arm length	2 120
A Max. digging reach	6 870
A' Max. digging reach (on ground)	6 720
B Max. digging depth	4 650
C Max. cutting height	7 580
D Max. dumping height	5 480
D' Min. dumping height	1 950
E Min. swing radius	2 120
F Max. vertical wall digging depth	4 260
G Front height at Min. swing radius	5 570
H Min.level crowding distance	1 630
I Working radius at Min. swing radius (Max. boom-swing angle)	-

Excluding track shoe lug

## DIMENSIONS



Unit: mm

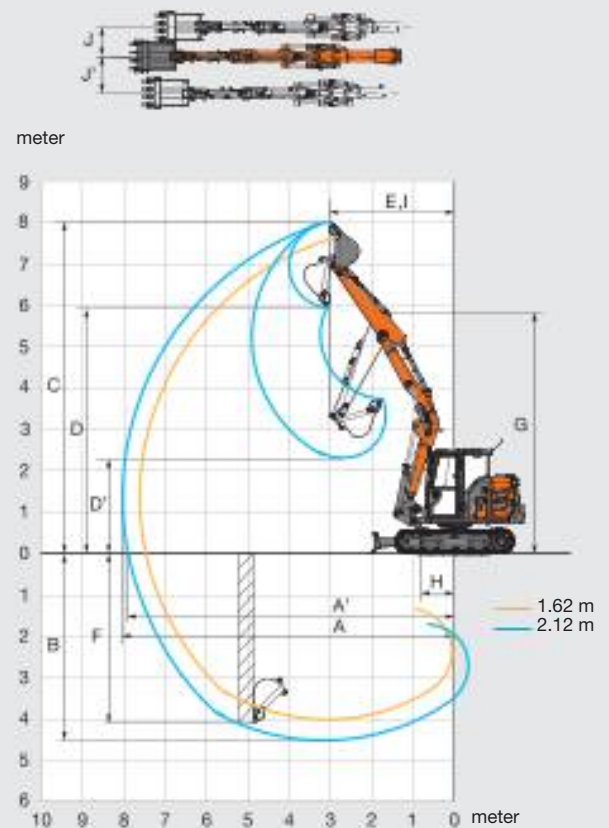
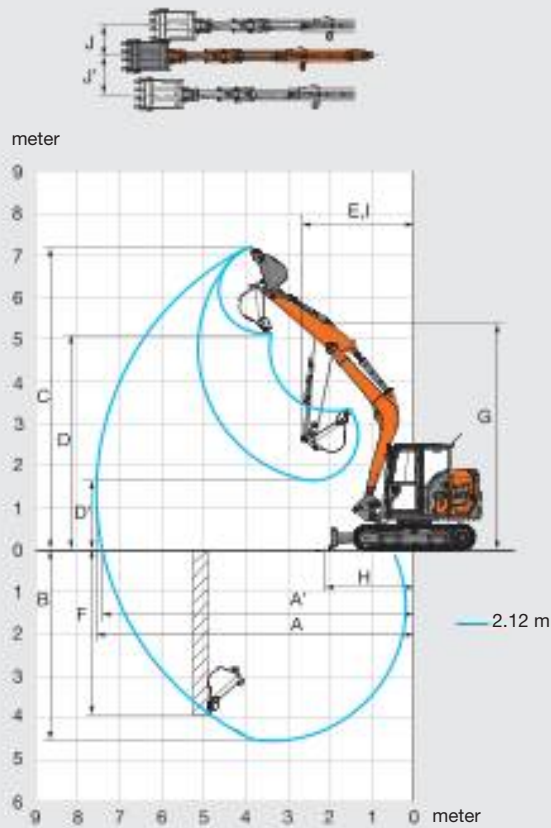
		ZX95US-7
		Monoblock boom
A	Distance between tumblers	2 295
B	Undercarriage length	2 900
C	Counterweight clearance	720
D	Rear-end swing radius	1 390
D'	Rear-end length	1 390
E	Overall width of upperstructure	2 260
F	Overall height of cab	2 530
G	Min. ground clearance	360
H	Track gauge	1 750
I	Track shoe width	G 450
J	Undercarriage width	2 200
K	Overall width	2 260
L	Track height	610
M	Overall length	
	With Arm 2.12 m	6 330
N	Overall height of boom	
	With Arm 2.12 m	2 930
O	Engine cover-height	1 880
P	Distance between the front end of blade and the axis of rotation	1 890
Q	Blade height	472
R	Blade bottom highest position above ground	370
S	Blade bottom lowest position above ground	290

\* Excluding track shoe lug G : Grouser shoe

# SPECIFICATIONS

## ZX95USB-7

### WORKING RANGES

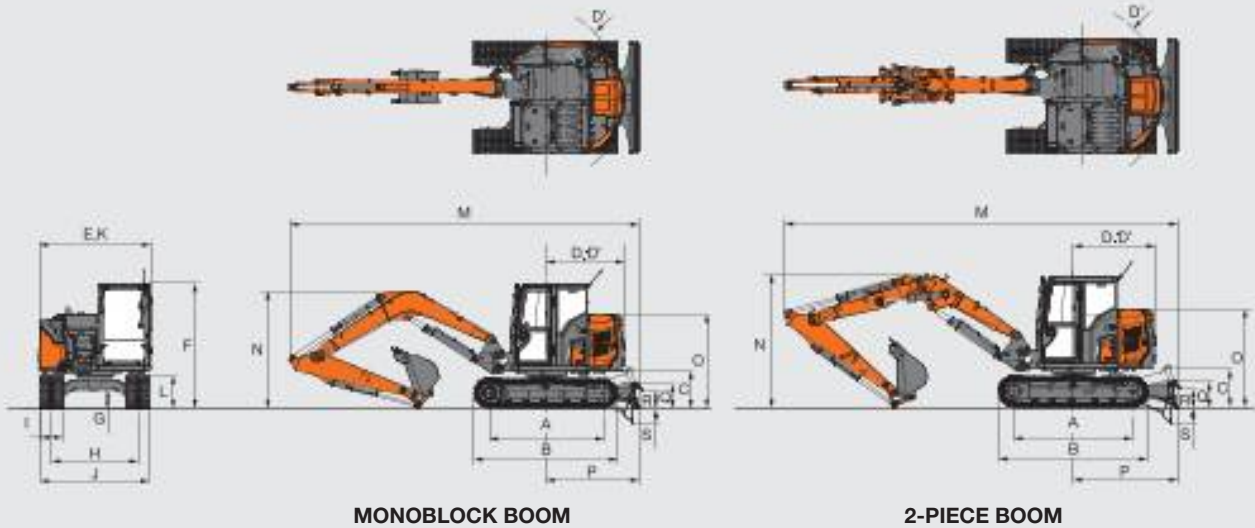


Unit: mm

	ZX95USB-7		
	Monoblock boom	2-Piece boom	
Arm length	2.12 m	1.62 m	2.12 m
A Max. digging reach	7 560	7 610	8 060
A' Max. digging reach (on ground)	7 420	7 470	7 920
B Max. digging depth	4 530	3 760	4 260
C Max. cutting height	7 190	7 690	8 040
D Max. dumping height	5 120	5 590	5 930
D' Min. dumping height	1 660	2 730	2 300
E Min. swing radius	2 680	2 750	3 020
F Max. vertical wall digging depth	3 900	3 650	4 110
G Front height at Min. swing radius	5 350	5 810	5 830
H Min.level crowding distance	2 140	990	720
I Working radius at Min. swing radius (Max. boom-swing angle)	2 210	2 080	2 210
J Offset distance (Max. boom-swing angle)	860	860	860
J' Offset distance (Max. boom-swing angle)	730	730	730
Max. boom-swing angle (deg.)	65 /55	65 /55	65 /55

Excluding track shoe lug

## DIMENSIONS



Unit: mm

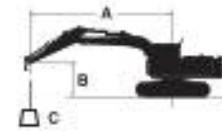
		ZX95USB-7	
		Monoblock boom	2-Piece boom
A	Distance between tumbler	2 295	2 295
B	Undercarriage length	2 900	2 900
*C	Counterweight clearance	720	720
D	Rear-end swing radius	1 590	1 590
D'	Rear-end length	1 590	1 590
E	Overall width of upperstructure	2 260	2 260
F	Overall height of cab	2 530	2 530
*G	Min. ground clearance	360	360
H	Track gauge	1 750	1 750
I	Track shoe width	450	450
J	Undercarriage width	2 200	2 200
K	Overall width	2 260	2 260
L	Track height	610	610
Overall length			
M	With Arm 1.62 m	-	7 610
	With Arm 2.12 m	7 220	7 600
Overall height of boom			
N	With Arm 1.62 m	-	2 530
	With Arm 2.12 m	2 530	2 780
O	Engine cover-height	1 880	1 880
P	Distance between the front end of blade and the axis of rotation	2 010	2 010
Q	Blade height	472	472
R	Blade bottom highest position above ground	390	390
S	Blade bottom lowest position above ground	340	340

\* Excluding track shoe lug G : Grouser shoe

# MACHINE CAPACITIES

## ZX95US-7

- Notes:
1. Ratings are based on ISO 10567 : 2007.
  2. Machine capacity does not exceed 75% of tipping load with the machine on firm, level ground or 87% full hydraulic capacity.
  3. The load point is the center-line of the bucket pivot mounting pin on the arm.
  4. \*Indicates load limited by hydraulic capacity.
  5. 0 m = Ground.



- A: Load radius  
B: Load point height  
C: Machine capacity

For machine capacities, subtract installed attachment and quick hitch weight from machine capacities.

To determine lifting capacities, apply "Rating over-side or 360 degrees" machine capacities from the table and deduct weight of installed attachment and quick hitch.

Optional feature may affect machine performance.

### ZX95US-7 Monoblock boom, Blade above Ground

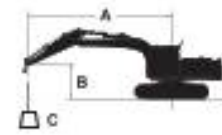
Rating over-front Rating over-side or 360 degrees Unit : kg

Conditions	Load point height (m)	Load radius												At max. reach		
		1.0 m		2.0 m		3.0 m		4.0 m		5.0 m		6.0 m		meter		
Boom 3.72 m Arm 2.12 m Counterweight 1 165 kg Grouser shoe 450 mm	5.0							*1 480	*1 480					*1 420	*1 420	4.52
	4.0					*1 450	*1 450	*1 520	*1 520	*1 600	1 360			*1 330	1 280	5.18
	3.0			*2 380	*2 380	*1 940	*1 940	*1 750	*1 750	1 650	1 340			*1 310	1 110	5.58
	2.0					*2 650	*2 650	*2 090	1 830	1 610	1 300			1 270	1 030	5.78
	1.0					*3 310	2 640	2 190	1 740	1 560	1 260			1 250	1 000	5.79
	0 (Ground)					3 320	2 530	2 120	1 670	1 520	1 220			1 280	1 030	5.63
	-1.0	*2 410	*2 410	*3 890	*3 890	3 270	2 490	2 080	1 640	1 510	1 200			1 400	1 120	5.27
	-2.0	*3 960	*3 960	*5 210	4 980	3 280	2 490	2 080	1 640					1 670	1 330	4.67
-3.0			*4 260	*4 260	*2 950	2 550							*2 210	1 880	3.71	
Boom 3.72 m Arm 2.12 m Counterweight 1 595 kg Grouser shoe 450 mm	5.0							*1 480	*1 480					*1 420	*1 420	4.52
	4.0					*1 450	*1 450	*1 520	*1 520	*1 600	1 550			*1 330	*1 330	5.18
	3.0			*2 380	*2 380	*1 940	*1 940	*1 750	*1 750	*1 670	1 530			*1 310	1 270	5.58
	2.0					*2 650	*2 650	*2 090	2 070	1 820	1 490			*1 340	1 180	5.78
	1.0					*3 310	3 000	*2 430	1 980	1 770	1 440			1 420	1 160	5.79
	0 (Ground)					*3 680	2 890	2 400	1 910	1 740	1 400			1 460	1 190	5.63
	-1.0	*2 410	*2 410	*3 890	*3 890	3 710	2 850	2 370	1 880	1 720	1 390			1 590	1 290	5.27
	-2.0	*3 960	*3 960	*5 210	*5 210	*3 570	2 850	2 370	1 880					1 900	1 530	4.67
-3.0			*4 260	*4 260	*2 950	2 910							*2 210	2 140	3.71	

# MACHINE CAPACITIES

## ZX95USB-7

- Notes:
1. Ratings are based on ISO 10567 : 2007.
  2. Machine capacity does not exceed 75% of tipping load with the machine on firm, level ground or 87% full hydraulic capacity.
  3. The load point is the center-line of the bucket pivot mounting pin on the arm.
  4. \*Indicates load limited by hydraulic capacity.
  5. 0 m = Ground.



- A: Load radius  
B: Load point height  
C: Machine capacity

For machine capacities, subtract installed attachment and quick hitch weight from machine capacities.

To determine lifting capacities, apply "Rating over-side or 360 degrees" machine capacities from the table and deduct weight of installed attachment and quick hitch.

Optional feature may affect machine performance.

### ZX95USB-7 Monoblock boom, Blade above Ground

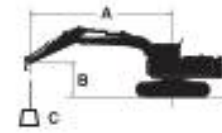
Rating over-front Rating over-side or 360 degrees Unit : kg

Conditions	Load point height (m)	Load radius												At max. reach		
		1.0 m		2.0 m		3.0 m		4.0 m		5.0 m		6.0 m		meter		
Boom 3.55 m Arm 2.12 m Counterweight 1 165 kg Grouser shoe 450 mm	5.0									1 780	1 460			1 720	1 400	5.10
	4.0							*1 960	*1 960	1 780	1 460			1 380	1 130	5.82
	3.0							*2 380	2 010	1 740	1 420	1 300	1 060	1 210	990	6.25
	2.0					3 720	2 880	2 360	1 890	1 680	1 370	1 270	1 030	1 130	920	6.46
	1.0					*2 740	2 640	2 240	1 780	1 620	1 310	1 240	1 000	1 100	890	6.49
	0 (Ground)					*3 130	2 560	2 160	1 710	1 570	1 260	1 210	980	1 130	910	6.33
	-1.0			*2 650	*2 650	3 350	2 550	2 130	1 680	1 550	1 240			1 220	980	5.96
	-2.0			*4 310	*4 310	3 380	2 570	2 140	1 690	1 560	1 250			1 430	1 150	5.34
	-3.0					*3 390	2 640	2 190	1 730					1 970	1 570	4.31
Boom 3.55 m Arm 2.12 m Counterweight 1 595 kg Grouser shoe 450 mm	5.0									*1 940	1 660			*1 750	1 600	5.10
	4.0							*1 960	*1 960	*1 940	1 660			1 560	1 290	5.82
	3.0							*2 380	2 270	1 970	1 620	1 480	1 220	1 380	1 140	6.25
	2.0					4 190	3 270	2 670	2 160	1 910	1 560	1 450	1 190	1 290	1 060	6.46
	1.0					*2 740	*2 740	2 550	2 040	1 850	1 500	1 420	1 160	1 260	1 040	6.49
	0 (Ground)					*3 130	2 950	2 470	1 970	1 800	1 460	1 400	1 140	1 300	1 060	6.33
	-1.0			*2 650	*2 650	3 830	2 940	2 440	1 940	1 780	1 440			1 400	1 140	5.96
	-2.0			*4 310	*4 310	3 850	2 960	2 450	1 950	1 780	1 440			1 630	1 330	5.34
	-3.0					*3 390	3 030	*2 380	2 000					*2 050	1 800	4.31

# MACHINE CAPACITIES

## ZX95USB-7

- Notes:
1. Ratings are based on ISO 10567 : 2007.
  2. Machine capacity does not exceed 75% of tipping load with the machine on firm, level ground or 87% full hydraulic capacity.
  3. The load point is the center-line of the bucket pivot mounting pin on the arm.
  4. \*Indicates load limited by hydraulic capacity.
  5. 0 m = Ground.



- A: Load radius  
B: Load point height  
C: Machine capacity

For machine capacities, subtract installed attachment and quick hitch weight from machine capacities.

To determine lifting capacities, apply "Rating over-side or 360 degrees" machine capacities from the table and deduct weight of installed attachment and quick hitch.


Optional feature may affect machine performance.





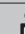



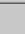

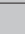

### ZX95USB-7 2-Piece boom, Blade above Ground

Rating over-front Rating over-side or 360 degrees Unit : kg

Conditions	Load point height (m)	Load radius												At max. reach		
		1.0 m		2.0 m		3.0 m		4.0 m		5.0 m		6.0 m		meter		
Boom 3.93 m Arm 1.62 m Counterweight 1 165 kg Grouser shoe 450 mm	5.0							*2 470	2 070	1 730	1 390			1 620	1 300	5.16
	4.0							2 510	2 010	1 730	1 390			1 280	1 020	5.87
	3.0					*2 960	*2 960	2 360	1 870	1 660	1 330	1 220	980	1 120	890	6.30
	2.0							2 170	1 690	1 570	1 240	1 190	940	1 030	810	6.51
	1.0							2 020	1 550	1 490	1 160	1 140	900	1 000	790	6.54
	0 (Ground)							1 960	1 500	1 440	1 120	1 120	870	1 020	800	6.38
	-1.0					*2 980	2 290	1 950	1 490	1 420	1 100	1 110	870	1 110	870	6.01
	-2.0					*2 940	2 340	1 980	1 510	1 440	1 120			1 310	1 020	5.40
	-3.0															
Boom 3.93 m Arm 2.12 m Counterweight 1 165 kg Grouser shoe 450 mm	5.0							*2 140	2 120	1 780	1 430			1 350	1 080	5.75
	4.0							*2 310	2 060	1 750	1 410	1 260	1 010	1 110	880	6.38
	3.0							2 420	1 920	1 680	1 340	1 230	980	980	770	6.77
	2.0							2 210	1 730	1 580	1 240	1 180	930	910	710	6.96
	1.0							2 030	1 560	1 480	1 150	1 130	880	880	680	6.99
	0 (Ground)							1 920	1 460	1 410	1 080	1 080	840	890	690	6.84
	-1.0					*2 920	2 180	1 890	1 420	1 370	1 050	1 060	820	950	730	6.51
	-2.0					3 020	2 220	1 900	1 430	1 370	1 050			1 090	840	5.95
	-3.0															

ZX95USB-7 2-Piece boom, Blade above Ground

 Rating over-front  Rating over-side or 360 degrees Unit : kg

Conditions	Load point height (m)	Load radius												At max. reach		
		1.0 m		2.0 m		3.0 m		4.0 m		5.0 m		6.0 m		meter		
																
Boom 3.93 m Arm 1.62 m Counterweight 1 595 kg Grouser shoe 450 mm	5.0							*2 470	2 330	1 960	1 590			1 840	1 490	5.16
	4.0							*2 640	2 270	1 950	1 590			1 470	1 190	5.87
	3.0					*2 960	*2 960	2 670	2 130	1 890	1 520	1 410	1 130	1 290	1 040	6.30
	2.0							2 480	1 950	1 800	1 440	1 370	1 100	1 190	960	6.51
	1.0							2 330	1 820	1 720	1 360	1 330	1 060	1 160	930	6.54
	0 (Ground)							2 270	1 760	1 660	1 310	1 300	1 030	1 190	950	6.38
	-1.0					*2 980	2 680	2 260	1 750	1 650	1 300	1 290	1 030	1 290	1 020	6.01
	-2.0					*2 940	2 730	2 280	1 770	1 670	1 310			1 470	1 200	5.40
	-3.0															
Boom 3.93 m Arm 2.12 m Counterweight 1 595 kg Grouser shoe 450 mm	5.0							*2 140	*2 140	*1 990	1 630			1 540	1 250	5.75
	4.0							*2 310	*2 310	1 980	1 610	1 440	1 160	1 280	1 030	6.38
	3.0							*2 720	2 180	1 900	1 540	1 410	1 140	1 130	910	6.77
	2.0							2 520	1 990	1 800	1 440	1 360	1 090	1 060	840	6.96
	1.0							2 340	1 820	1 710	1 350	1 310	1 040	1 030	810	6.99
	0 (Ground)							2 230	1 720	1 630	1 280	1 260	1 000	1 050	820	6.84
	-1.0					*2 920	2 570	2 190	1 690	1 600	1 250	1 240	980	1 110	880	6.51
	-2.0					3 500	2 610	2 200	1 690	1 600	1 250			1 270	1 000	5.95
	-3.0															

# EQUIPMENT

● : Standard equipment ○ : Optional equipment – : Not applicable

ENGINE	ZX95US-7	ZX95USB-7
Aftertreatment device	●	●
Air cleaner double filters	●	●
Alternator 24 V - 60 A	●	●
Auto idle system	●	●
Auto shut-down control	●	●
Cartridge-type engine oil filter	●	●
Cartridge-type fuel main filter	●	●
ConSite OIL (sensor)	○	○
Dry-type air filter with evacuator valve (with air filter restriction indicator)	●	●
Electric fuel refilling pump	●	●
Engine oil drain coupler	●	●
Fan guard	●	●
Fuel cooler	●	●
Fuel pre-filter with water separator	●	●
Maintenance free pre-cleaner	○	○
PWR / ECO mode control	●	●
Radiator reserve tank	●	●
Radiator, oil cooler with one touch type cleaning interval extension net	○	○
Radiator, oil cooler with one touch type dust-proof indoor net	●	●

HYDRAULIC SYSTEM	ZX95US-7	ZX95USB-7
Auxiliary flow adjustment switching	○	○
Boom anti-drift valve	●	●
ConSite OIL (sensor)	○	○
Extra port for control valve	●	●
Full-flow filter	●	●
Hose rupture valve for arm cylinder	●	●
Hose rupture valve for boom cylinder	●	●
Hydraulic pilot type control levers	●	●
Low-temperature starting speed control	●	●
Main pump pressure and temperature sensor	●	●
Pilot control shut-off lever with neutral engine start system	●	●
Pilot filter	●	●
Suction filter	●	●
Swing drain filter	●	●
Swing parking brake	●	●
Travel parking brake	●	●
Two-speed travel system	●	●
Valve for extra piping	●	●
Variable reliefvalve for breaker and crusher	●	●
Work mode selector	●	●

CAB	ZX95US-7	ZX95USB-7
AUX function lever (breaker)	○	○
Blade lever with two-speed travel switch	●	●
Bluetooth® integrated DAB+radio	●	●
Cab with laminate glass only for front window	○	○
Control lever auto-lock	●	●
Defroster	●	●
Drink holder with hot and cool function	●	●
Electric horn	●	●
Engine shut-off switch	●	●
Equipped with reinforced glass windows	●	●
Evacuation hammer	●	●
Fire extinguisher mounting seat	●	●
Footrest	●	●
Floor mat	●	●
Front window washer (1 point)	●	●
Front window washer (2 points) *	○	○
Hands-free calling device	●	●
Hot and cool box	●	●
Intermittent windshield wipers	●	●
LED room light	●	●
Lower front window one-touch lock (release lever)	●	●
Magazine rack	○	○
OPG top guard, Level II (ISO 10262 : 1998) compliant	○	○
OPG front guard, Level II (ISO 10262 : 1998) compliant	○	○
Pilot shut-off lever	●	●
Power outlet 12 V	●	●
Rain guard (without OPG front guard) **	○	○
Rear tray	●	●
Retractable seat belt	●	●
Rubber radio antenna	●	●
ROPS (ISO 12117-2 : 2008) compliant cab	●	●
Seat : air suspension seat with heater	●	●
Seat adjustment part : backrest, armrest, height and angle, slide forward / back	●	●
Seat belt reminder	●	●
Smartphone holder	●	●
Sunscreen roller type (top window)	●	●
Sunscreen roller type (front window)	○	○
Tinted window glass (right side)	○	○
Transparent roof	●	●
USB power supply	●	●
Wide view wiper	○	○
Windows on front, upper and lower can be opened	●	●
Window (right side) guard pipe	●	–
4 fluid-filled elastic mounts	●	●
8 inch monitor	●	●
2 speakers	●	●

● : Standard equipment ○ : Optional equipment – : Not applicable

MONITOR SYSTEM	ZX95US-7	ZX95USB-7
Alarms:overheat, engine warning, engine oil pressure, alternator, minimum fuel level, air filter restriction, work mode, overload, etc	●	●
Alarm buzzers:overheat, engine oil pressure, overload, etc	●	●
Display of meters:water temperature, hour, fuel rate, clock, etc	●	●
Other diaplays:work mode, auto-idle, glow, rearview monitor, operating conditions, etc	●	●
35 language selection	●	●

LIGHTS	ZX95US-7	ZX95USB-7
Additional 3 cab roof front LED lights	○	○
Boom LED lights (boom x 1, cab front x 1)	●	●
3 ambient LED lights (side and rear view camera)	○	○

UPPER STRUCTURE	ZX95US-7	ZX95USB-7
Accumulator	●	●
AERIAL ANGLE (270-degree view camera system)	●	●
Auxiliary overload relief valve	●	●
Batteries 2 x 60 Ah	●	●
Fuel level float	●	●
Remote swing circle lubrication	●	●
Lockable tool box	●	●
Side view mirror (left side)	●	●
Undercover	●	●
1 165 kg counterweight	●	●
430 kg additional counterweight	○	○
2 way disconnect switch	●	●

UNDERCARRIAGE	ZX95US-7	ZX95USB-7
Angle blade	○	○
Blade	●	●
Blade float	○	○
Reinforced track links with pin seals	●	●
Travel motor covers	●	●
4 tie down hooks	●	●
450 mm grouser shoe	●	●
450 mm pad crawler shoe	○	○
450 mm rubber shoe	○	○
600 mm grouser shoe	○	○

FRONT ATTACHMENTS	ZX95US-7	ZX95USB-7
Assist piping	○	○
Dirt seal on all bucket pins	●	●
Extra piping	●	●
HN bushing	●	●
HRV cover	●	●
Reinforced resin thrust plate	●	●
WC (tungsten-carbide) thermal spraying	●	●
2 piece boom	–	○
1.62 m arm	–	– / ○***
2.12 m arm	●	●
Quick coupler piping	●	●

MISCELLANEOUS	ZX95US-7	ZX95USB-7
ConSite	○	○
Global e-service	●	●
Standard tool kit	●	●
Theft deterrent system ****	●	●

Standard and optional equipment may vary by country, so please consult authorized dealer for details.

\* Double washer is only when equipped with wide-view wipers.

\*\* Rain guard cannot be install when Cab front top guard and cab ceiling tower guard ISO (OPG) Level II conform ance (ISO 10262: 1998) are installed.

\*\*\* Only when Mono boom is equipped, it is not applicable and when 2 piece boom is equipped, it can be installed as option.

\*\*\*\* Hitachi Construction Machinery cannot be held liable for theft, any system will just minimize the risk of theft.