



RPM REFERENCE:	PC2026-0121
MANUFACTURER:	KOMPTECH
TYPE:	CRAMBO
MODEL:	5200 EC DIRECT
YEAR:	2019
HOURS:	5160
CONDITION:	EXCELLENT
PRICE:	£195000.00
LOCATION:	CORBY



Description

- > IMG_6214CAT Diesil engine 460HP
- > Full Service History
- > Twin Shaft rotor speeds 22 and 34 RPM
- > Shaft length 2820mm
- > Shaft Diameter 610
- > Replaceable teeth
- > Replaceable screens
- > Load height 2898mm
- > Discharge height 4151mm
- > End roller magnet on discharge
- > Metal chute on discharge
- > Remote control
- > Fire Supression
- > Weight 24600Kg's
- > Throughput on green waste up to 80 T/hr (depending on screen size)
- > Transport Dimensions: length 6940 X W 2845 X H 2360 mm

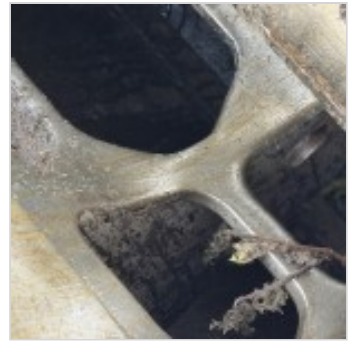
Materials Handled

- > Green

- › Green Waste Compost
- › Wood

Industry Sectors

- › Green Waste Processing
- › Landscapers
- › Recycling Plants
- › Waste Management
- › Waste to Energy
- › Wood Waste Processing





Recycling Plant & Machinery Ltd
Beechwood House, Bryntywod, Llangyfelach, Swansea, SA5 7LP
Office: +44 (0) 1792 702 173 Tel: +44 (0) 7834 585 247 Email: sales@thinkrpm.co.uk
Company Registration No. 7467439

www.thinkrpm.co.uk