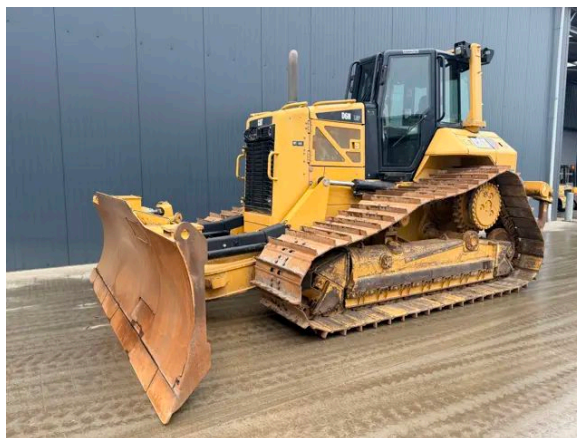


CATERPILLAR D6N LGP | U/C 90% GOOD! | FOLDABLE BLADE

Description

Caterpillar D6N LGP, Engine brand Caterpillar, C6.6, 129kW, EPA, CE, Air conditioning, Erops cabin, Foldable 6-way blade, Width of the blade 3,90m, Differential steering, Multi shank ripper, System one undercarriage, Width of the pads 840mm, Undercarriage 90% good, Prepared for laser, Prepared for GPS, AM/FM radio, Hours certified by Caterpillar, In very good and very clean condition.



Year	2012
Hours	8887
Weight	18.811 kg
Serial number	CAT00D6NCPBA00420
Reference	210454

[Download photos](#)


CONTACT US:
SALES@SMITMA.COM
+31(0)773999840

New/Excellent
★★★★★

Very good
★★★★☆

Good
★★★☆☆

Fair
★★★☆☆

Poor
★★★☆☆

INSPECTION REPORT

FEATURES

Engine brand	Caterpillar
Engine model	C6.6
Engine power in kW	129kW
EPA	✓
CE	✓
Air conditioning	✓
Erops cabin	✓
Blade	Foldable 6-way blade
Width of the blade	3,90m
Steering	Differential steering
Ripper or valve	Multi shank ripper
Width of the pads	840mm, Undercarriage 90% good
Hours	Hours certified by Caterpillar
Overall condition	In very good and very clean condition.

DOCUMENTS

Parts book	✓
Operation manual	✓

GENERAL APPEARANCE

Stamped serial number checked	Yes
Serial number plate checked	Yes
Paint	★★★★★
Decals	★★★★★
Bonnet	★★★★★
Engine cover doors	★★★★★
Chassis	★★★★★
Toolbox	★★★★★
Grab irons	★★★★★
Cabin	★★★★★
Belly plate	★★★★★

ENGINE DETAILS AND CONDITION

Engine number	C8N03877
Arrangement number	330-5455

EPA sticker available	Yes
Note: Poor condition	
Air cleaner	Clean
Anti-freeze level °C	-28°C
Diesel anti-freeze added	Yes
Diesel level ok	Yes
Cooling liquid level ok	Yes
Engine oil level ok	Yes
Exhaust manifold	★★★★★
Muffler	★★★★★
Exhaust stack	★★★★★
Engine supports	★★★★★
Hoses	★★★★★
Good cold start	Yes
Engine power	★★★★★
Blow by	★★★★★
Knocking	No
Compression in the radiator	No
Water in the oil	No
Oil in the water	No
Smoke	Normal
Engine leaks	No
Belts and pulleys	★★★★★
Fan	★★★★★
Radiator	★★★★★
UNDERCARRIAGE LEFT IN LIFE IN %	
Overall condition	90%
Chains	90%
Bushings	90%
Sprockets	90%
Idlers	80%
Bottom rollers	90%
Top rollers	80%
Track pads	90%
OPERATOR STATION	
Hourmeter	Working, hours certified by Caterpillar
Air conditioning	Working

Heater	Working
Gauges	Working
Switches	★★★★★
Display	★★★★★
Warning	No Warnings Available
Cabin glass	Not broken
Windshield wipers	Few don't work
Interior lights	Working
Cabin floor	★★★★★
Interior roof	★★★★★
Seat	★★★★★

STEERING

Steering operating condition	★★★★★
------------------------------	-------

FRAME AND BLADE

Moldboard skin	★★★★★
Cutting edge	★★★★★
Play dozer frame	★★★★★
Play blade pin	★★★★★
Play push arms	★★★★★
Play lift cylinder	★★★★★
Lift cylinders leaking	No
Play angle cylinders	★★★★★
Angle cylinders leaking	No
Play equaliser bar	★★★★★
Cracks or welds	No

RIPPER

Play ripper	★★★★★
Cylinders leaking	No
Ripper frame	★★★★★
Number of ripper shanks	3

HYDRAULICS

Hydraulic oil level ok	Yes
Hydraulic lines and fittings	★★★★★
Hydraulic tank/sight glass and cap	★★★★★
Hydraulic valves leaking	No
Noise hydraulic pump normal	Yes

Operating condition hydraulics



BRAKE

Service brake operation



Parking brake operation



DRIVE TRAIN/TRANSMISSION

Transmission fully operational in all gears
forward and reverse

Yes

Transmission oil level ok

Yes

Transmission noisy

No

Oil level left final drive ok

Yes

Oil level right final drive ok

Yes

Drive chain leaks

No

ELECTRICAL, STARTING AND CHARGING SYSTEM

Alternator functioning

Yes

Wiring



Batteries



Starter



Cabin lights working

Yes

Additional work lights working

Few lights don't work

SAFETY ITEMS

Backup alarm

Working

Seat belt

Not Available

Horn

Working

New/Excellent



Very good



Good



Fair



Poor



Copyright Smitma BV

