



**SOLID**  
TO SUCCEED



# ARTICULATED BOOM LIFT XGA12ACK

Comply with CE

## Standard configuration

- $\pm 90^\circ$  fly boom swing
- 2-wheel drive
- Lowering and moving alarm
- Tilt alarm
- Horn with adjustable volume
- Emergency stop of platform and chassis
- Emergency power unit
- 2-wheel braking system
- Proportional Self-leveling System
- Proportional joystick control
- Drive enable
- Full time positive traction drive
- Full speed traveling motor
- Telematics pre-interface
- Anti-extrusion protection device
- Thumb rocker steering



Working height  
11.56 meters



Lift capacity  
230Kg



Electric  
power



## Optional configuration

- Platform power supply
- Tool tray
- Working light assembly
- Platform with half-height mesh panel
- Anti-extrusion protection device
- Air pipe to platform
- Fall arrest assembly
- Platform anti-squeeze auxiliary track

**XCMG FIRE-FIGHTING SAFETY EQUIPMENT CO.,LTD**

No.17 Zhujiang East Road, Hi-Tech Development Zone, Xuzhou, Jiangsu, China  
mewp@xcmg.com



# XGA12ACK



**SOLID**  
TO SUCCEED

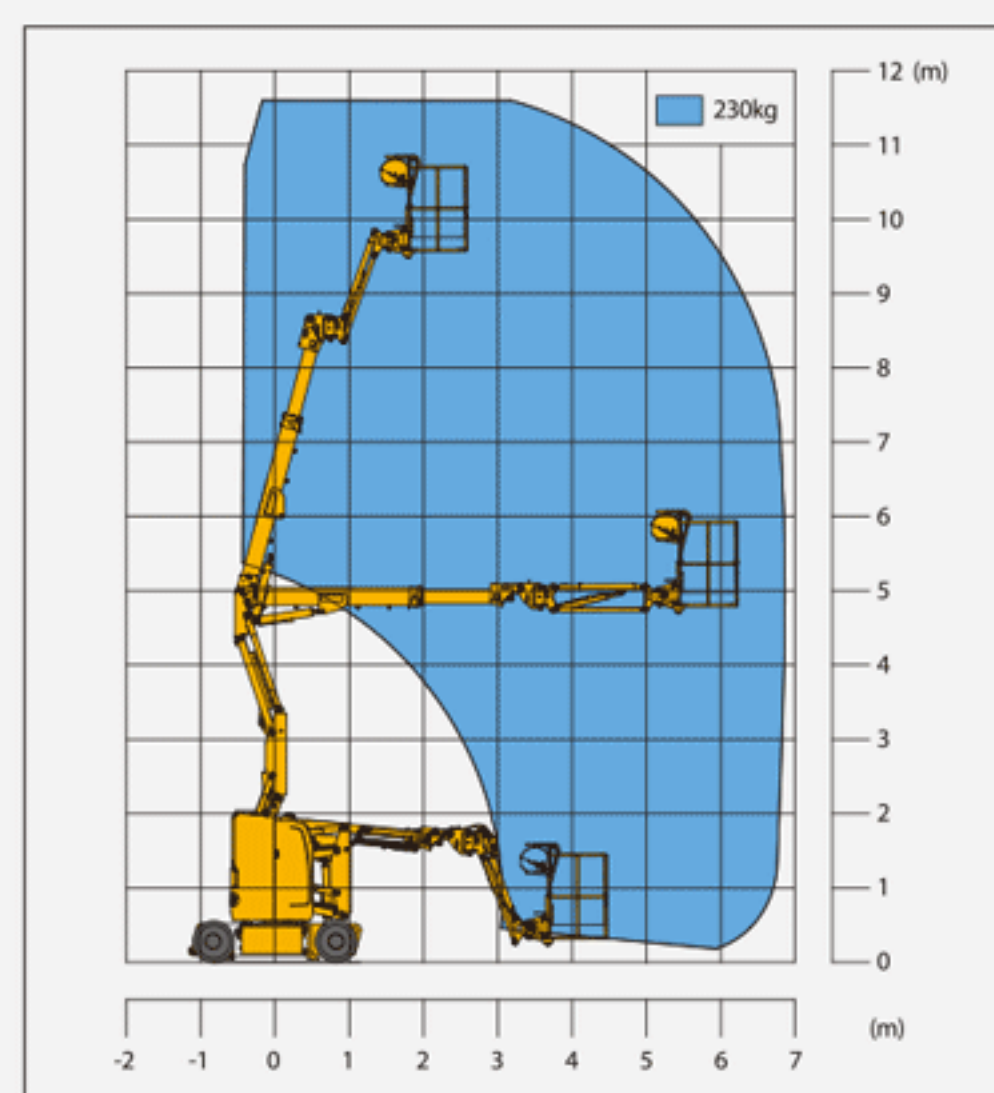
## Articulated Boom Lift-Electric

Item	Metric	
Dimension		
Overall dimension - stowed state	Length	5600mm
	Width	1190mm
	Height	2015mm
Overall dimension - transportation	Length	5360mm
	Width	1190mm
	Height	2630mm
Platform dimension	Length	1170mm
	Width	760mm
	Height	1150mm
Wheelbase		1650mm
Fly jib length		1150mm
Min. ground clearance		85mm

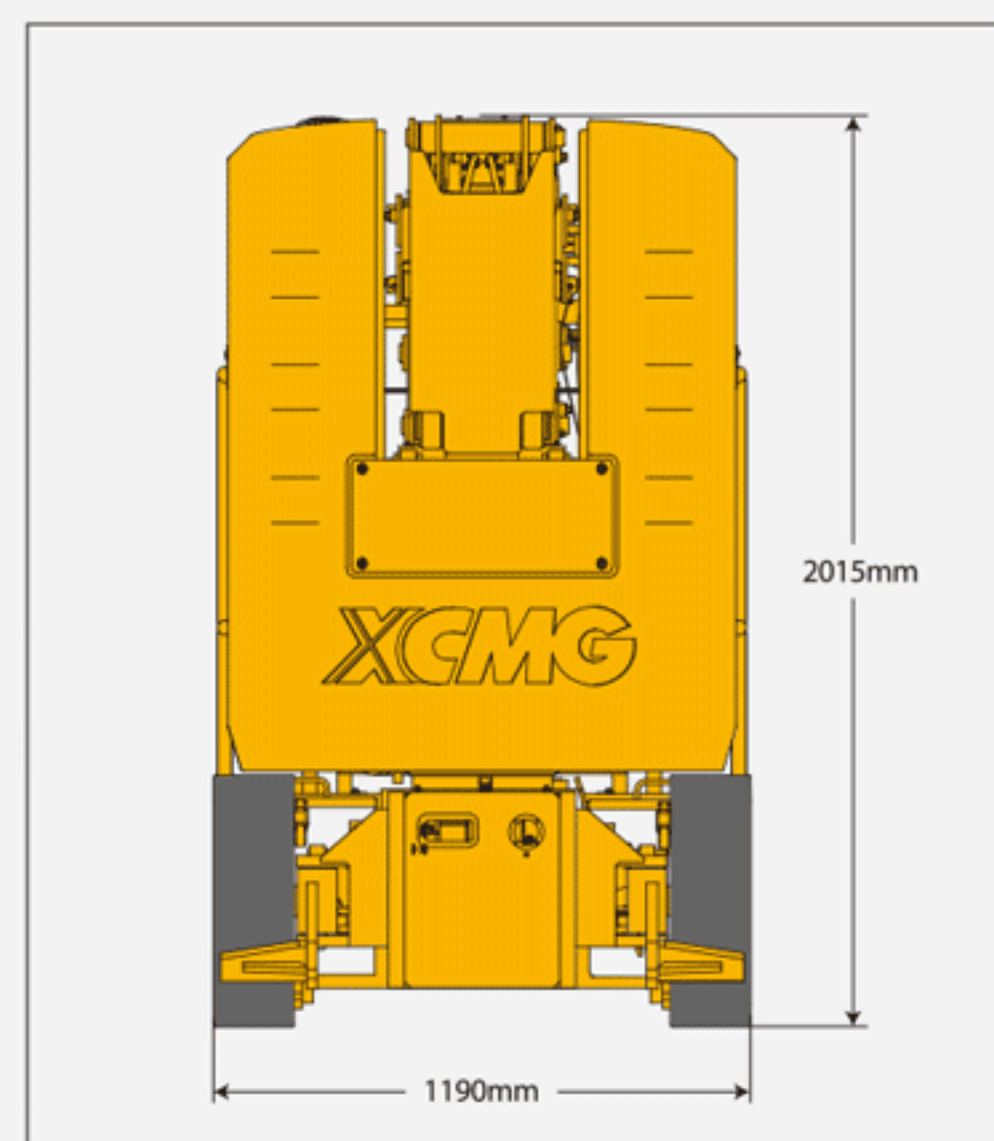
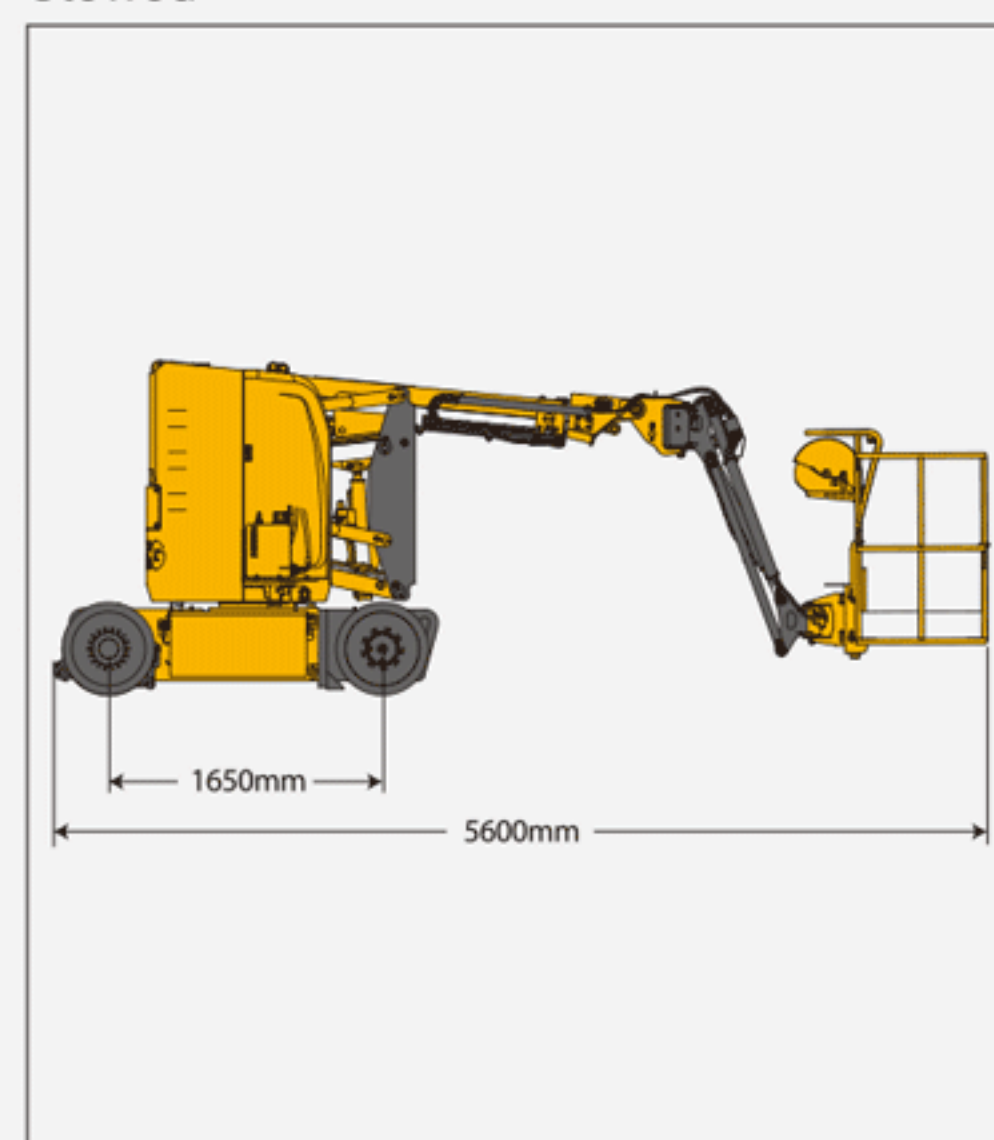
<b>Performance</b>	
Max. working height	11.56m
Max. platform height	9.56m
Max. working range	6.87m
Max. up and over clearance	4.7m
Max. lift capacity	230kg (unlimited)
Max. number of occupants	2
Max. working slope	X-3° / Y-5°
1st boom luffing range	-12.5°~70°
2nd boom luffing range	-5.5°~75°
Fly jib luffing range	-70°~70°
Turntable rotation	355°
Platform rotation	160°
Total weight	7000kg
Driving speed (stowed)	5km/h
Driving speed (raised or extended)	0.6km/h
Min. turning radius (inside/outside)	1760mm/3250mm
Turntable tailswing (stowed)	0mm
Max. gradeability	35% (19.3°)

<b>Power source</b>	<b>Maintenance-free lead acid</b>
Control	12V DC proportional control
Traveling motor	3.3kW/32V
Emergency power supply	12V/110Ah
Main power source - battery	48V/400Ah
Main power source - charger	48V/35A
Hydraulic tank capacity	16L

<b>Tire</b>	
Tire size	557mm×178mm
Tire ground pressure	10.83kg/cm <sup>2</sup>
Driving wheels	2
Braking wheels	2
Steering wheels	2



Stowed



The print does not belong to the contract, nor a part of the commercial contract. We reserve the right to revise the product model, parameters, configuration based on the continuous improvement requirements of the product, without prior notice. Pictures are for reference only, and the specific product shall depend on the real product. The final interpretation rights belong to XCMG.