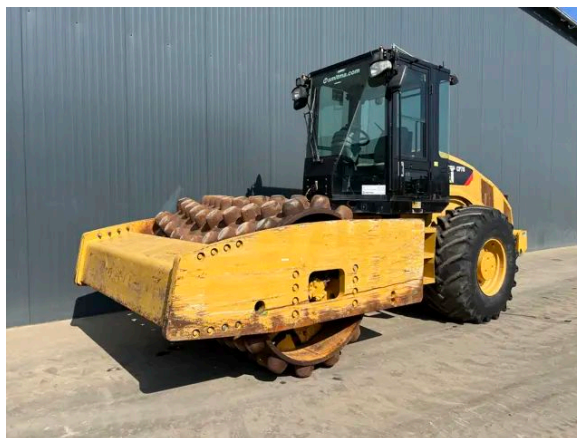


CATERPILLAR CP76

Description

Caterpillar CP76, Caterpillar , C6.6, 129.5 kW, CE, Erops cabin, 23.1-26, Frequency meter, Air conditioning, Backup alarm, Beacon, Hours certified by Caterpillar, In good and clean condition.



Year	2011
Hours	3633
Weight	16.680 kg
Serial number	CAT0CP76CC7L00159
Reference	206558

[Download photos](#)


CONTACT US:
SALES@SMITMA.COM
+31(0)773999840

New/Excellent
★★★★★

Very good
★★★★☆

Good
★★★☆☆

Fair
★★★☆☆

Poor
★★★☆☆

INSPECTION REPORT

FEATURES

Engine brand	Caterpillar
Engine model	C6.6
Engine power in kW	129.5 kW
CE	✓
Tyre size	23.1-26
Beacon	✓
Overall condition	In good and clean condition.

DOCUMENTS

Parts book	✓
Operation manual	✓

GENERAL APPEARANCE

Stamped serial number checked	Yes
Serial number plate checked	Yes
Paint	★★★★★
Decals	★★★★★
Bonnet	★★★★★
Steps/ladders	★★★★★
Cabin	★★★★★

ENGINE DETAILS AND CONDITION

Engine number	C6E33759
Arrangement number	242-1385
Air cleaner	New
Anti-freeze level °C	-27°C
Diesel anti-freeze added	Yes
Diesel level ok	Yes
Cooling liquid level ok	Yes
Engine oil level ok	Yes
Exhaust manifold	★★★★★
Muffler	★★★★★
Exhaust stack	★★★★★
Hoses	★★★★★
Good cold start	Yes

Engine power	★★★★★
Blow by	★★★★★
Knocking	No
Compression in the radiator	No
Water in the oil	No
Oil in the water	No
Smoke	Normal
Engine leaks	No
Belts and pulleys	★★★★★
Fan	★★★★★
Radiator	★★★★★

SAFETY ITEMS

Backup alarm	Working
Seat belt	Available
Horn	Working
Parking brake	Working
Beacon	Not Working

OPERATOR STATION

Hourmeter	Working, hours certified by Caterpillar
Air conditioning	Not Working
Heater	Working
Gauges	Working
Switches	★★★★★
Warnings	No warnings available
Mirrors	Not broken
Cabin glass	Small crack, no need to repair
Windshield wipers	Not Working
Interior lights	Not Working
Cabin floor	★★★★★
Interior roof	★★★★★
Seat	★★★★★
Door lock	Working

DRUM

Vibratory system	★★★★★
Drum surface	★★★★★
Rubber mounts	★★★★★

Drum scrapers	★★★★★
Leakages	No
Drum oil level ok	Yes
Vibration	High and low vibration frequency working

STEERING

Articulate cylinder leaking	No
Play articulate cylinder	★★★★★
Play articulating point	★★★★★

HYDRAULICS

Hydraulic oil level ok	Yes
Hydraulic lines and fittings	★★★★★
Hydraulic tank/sight glass and cap	★★★★★
Noise hydraulic pump normal	Yes
Operating condition hydraulics	★★★★★

DRIVE CHAIN

Rear axle leakages	No
Wheel bolts and rims	★★★★★
Travel motors	★★★★★
Left final drive leaking	No
Oil level right final drive ok	Yes
Right final drive leaking	No

ELECTRICAL, STARTING AND CHARGING SYSTEM

Alternator functioning	Yes
Wiring	★★★★★
Batteries	★★★★★
Starter	★★★★★
Cabin lights working	Yes
Tail lights working	Yes

TYRES

REAR LEFT TYRES	
Tread dept in mm	23mm
Percentage life remaining	50%
REAR RIGHT TYRES	

Tread dept in mm	22mm
Percentage life remaining	50%

New/Excellent ★★★★★	Very good ★★★★★	Good ★★★★	Fair ★★★	Poor ★★
------------------------	--------------------	--------------	-------------	------------

Copyright Smilma BV

