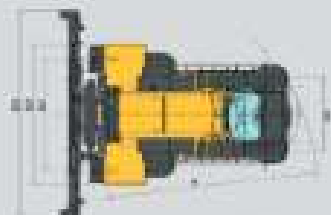


DOUBLE BOX

EMPTY CONTAINER HANDLER SDCY100K

| MAIN COMPONENTS | | |
|-----------------|--------------------|--|
| Model | Fixed | With tilts forward |
| | Parking | Automatic retracted fork to clear |
| Engine | Type | Isolated |
| | Model | Yanmar D62 811 50 |
| | Power | 43.8 kW - 59.0 kW |
| | Power | 59.0 kW - 60.0 kW |
| | rpm | 2000 |
| | Temp | 180°C or 3500 rpm |
| | Cylinder | 4 |
| | Displacement | 3700 cm ³ |
| Drive axle | Motor | SDCY410 0 m |
| Attachment | Motor | 0.8m x 1.7 |
| | Clear height | 3.0 |
| Operator | Model | SDS1120P or SDS1120 SDS1120 or SDS1120 |
| | Type | SDS (single fork) SDS L-shaped fork with retractable - SDS SDA (double fork with retractable fork - length) |
| | Cake fork | ~ 300 |
| | Hydraulic pressure | 300 |
| Data | Height | 4000mm |
| | Capacity | 3.0 |
| | Fuel | 3000 |



| DIMENSIONS | | | |
|---------------------------|--------------|--------|--------|
| | | 1000mm | 1000mm |
| Front/rear fork | Standard | | |
| Max front fork | 4.20-4.80004 | | |
| Max rear fork | 3.20-4.00004 | | |
| Position | mm | 50 | |
| Total weight without load | kg | 40000 | 40000 |
| Weight with 1000kg load | kg | 50000 | 50000 |
| Weight with 2000kg load | kg | 60000 | 60000 |
| Weight with 3000kg load | kg | 70000 | 70000 |

| PERFORMANCE | | |
|--------------------------------|------|------|
| Capacity | kg | 3000 |
| Rated front lift/tilted load | kg | 2000 |
| Lifting front lift/tilted load | mm | 4000 |
| Lifting rear lift/tilted load | mm | 3000 |
| Rated velocity | km/h | 30 |
| Max gradient | % | 30 |

* Capacity 3T



| DIMENSIONS | | | |
|------------|--|-----------------------|-----------------------|
| | | 1000mm | 1000mm |
| | Working height | 11.50000* - 11.50000* | 11.50000* - 11.50000* |
| 141 | Min. height raised | 1400 | 1400 |
| 142 | Min. height under fullload | 1500 | |
| 144 | Min. lift height | 1500 | 1500 |
| 146 | Min. mast height | 1500 | 1500 |
| 148 | Clear height without cutting fork(s) light | 4700 | |
| 147 | Fork length | 3200 | |
| X | Lift load center | 1100 | |
| | Lift center | 1000 | |
| Y | Windup | 4000 | |
| L7 | Overall length | 6000 | |
| 88 | Ground clearance | 100 | |
| 8804 | Wheel center front/rear | 2000/2000 | |
| 88 | Overall width front/rear (without fork) | 1000/1000 | |
| 88 | Overall width | 1000 | |
| | Pitch working from center of loading (0 to 5 to 5) | 100 | |
| F1 | Turning radius (with/without) | 1000/1000 | |
| | Allow speed 20/10 | 7000 / 2000 | |
| ~F | Min. lifting (forks down) | 50 | |