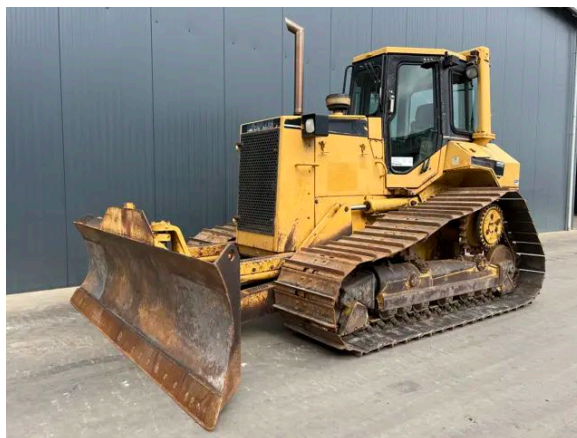


CATERPILLAR D5M LGP

Description

Caterpillar D5M LGP, Engine brand Caterpillar , 3116, 82 kW, EPA, CE, Erops cabin, 6-way blade, Width of the blade 3.32m, Finger tip control, Width of the pads 760mm, Draw bar, New ripper available, ask for quotation, In good and clean condition.



| | |
|---------------|----------|
| Year | 1997 |
| Hours | 11190 |
| Weight | 15800 kg |
| Serial number | 3CR00383 |
| Reference | 209303 |

[Download photos](#)


CONTACT US:
SALES@SMITMA.COM
+31(0)773999840

New/Excellent
★★★★★

Very good
★★★★☆

Good
★★★☆☆

Fair
★★★☆☆

Poor
★★★☆☆

INSPECTION REPORT

FEATURES

| | |
|---|------------------------------|
| Engine brand | Caterpillar |
| Engine model | 3116 |
| Engine power in kW | 82 kW |
| EPA | ✓ |
| CE | ✓ |
| Erops cabin | ✓ |
| Blade | 6-way blade |
| Width of the blade | 3.32m |
| Steering | Finger tip control |
| Width of the pads | 760mm |
| Draw bar | ✓ |
| New ripper available, ask for quotation | ✓ |
| Overall condition | In good and clean condition. |

DOCUMENTS

| | |
|------------------|---|
| Parts book | ✓ |
| Operation manual | ✓ |

GENERAL APPEARANCE

| | |
|-------------------------------|-----------|
| Stamped serial number checked | Yes |
| Serial number plate checked | Yes |
| Paint | ★ ★ ★ ★ ★ |
| Decals | ★ ★ ★ ★ ★ |
| Bonnet | ★ ★ ★ ★ ★ |
| Engine cover doors | ★ ★ ★ ★ ★ |
| Chassis | ★ ★ ★ ★ ★ |
| Toolbox | ★ ★ ★ ★ ★ |
| Grab irons | ★ ★ ★ ★ ★ |
| Cabin | ★ ★ ★ ★ ★ |
| Belly plate | ★ ★ ★ ★ ★ |
| Pre-cleaner bowl | ★ ★ ★ ★ ★ |

ENGINE DETAILS AND CONDITION

| | |
|--------------------|----------|
| Engine number | 4TF36968 |
| Arrangement number | 114-4509 |

| | |
|-----------------------------|--------|
| EPA sticker available | Yes |
| Air cleaner | Clean |
| Anti-freeze level °C | -37°C |
| Diesel anti-freeze added | Yes |
| Diesel level ok | Yes |
| Cooling liquid level ok | Yes |
| Engine oil level ok | Yes |
| Exhaust manifold | ★★★★★ |
| Muffler | ★★★★★ |
| Exhaust stack | ★★★★★ |
| Hoses | ★★★★★ |
| Good cold start | Yes |
| Engine power | ★★★★★ |
| Blow by | ★★★★★ |
| Knocking | No |
| Compression in the radiator | No |
| Water in the oil | No |
| Oil in the water | No |
| Smoke | Normal |
| Engine leaks | No |
| Belts and pulleys | ★★★★★ |
| Fan | ★★★★★ |
| Radiator | ★★★★★ |

UNDERCARRIAGE LEFT IN LIFE IN %

| | |
|-------------------|-----|
| Overall condition | 40% |
| Chains | 40% |
| Bushings | 30% |
| Sprockets | 50% |
| Idlers | 30% |
| Bottom rollers | 10% |
| Top rollers | 50% |
| Track pads | 40% |

OPERATOR STATION

| | |
|------------------|----------------|
| Hourmeter | Working |
| Air conditioning | Not Working |
| Heater | Working |
| Gauges | Few don't work |

| | |
|-------------------|-----------------------|
| Switches | ★★★★★ |
| Display | ★★★★★ |
| Warning | No Warnings Available |
| Cabin glass | Not broken |
| Windshield wipers | Not Working |
| Interior lights | Not Working |
| Cabin floor | ★★★★★ |
| Interior roof | ★★★★★ |
| Seat | ★★★★★ |

STEERING

| | |
|------------------------------|-------|
| Steering operating condition | ★★★★★ |
|------------------------------|-------|

FRAME AND BLADE

| | |
|-------------------------|-------|
| Moldboard skin | ★★★★★ |
| Cutting edge | ★★★★★ |
| Play dozer frame | ★★★★★ |
| Play blade pin | ★★★★★ |
| Play push arms | ★★★★★ |
| Play lift cylinder | ★★★★★ |
| Lift cylinders leaking | No |
| Play tilt cylinder | ★★★★★ |
| Tilt cylinder leaking | No |
| Play angle cylinders | ★★★★★ |
| Angle cylinders leaking | No |
| Play equaliser bar | ★★★★★ |

HYDRAULICS

| | |
|------------------------------------|-------|
| Hydraulic oil level ok | Yes |
| Hydraulic lines and fittings | ★★★★★ |
| Hydraulic tank/sight glass and cap | ★★★★★ |
| Hydraulic valves leaking | No |
| Noise hydraulic pump normal | Yes |
| Operating condition hydraulics | ★★★★★ |

BRAKE

| | |
|-------------------------|-------|
| Service brake operation | ★★★★★ |
| Parking brake operation | ★★★★★ |

DRIVE TRAIN/TRANSMISSION

| | |
|---|-----|
| Transmission fully operational in all gears forward and reverse | Yes |
| Transmission oil level ok | Yes |
| Transmission noisy | No |
| Oil level left final drive ok | Yes |
| Oil level right final drive ok | Yes |
| Drive chain leaks | No |

ELECTRICAL, STARTING AND CHARGING SYSTEM

| | |
|--------------------------------|-------|
| Alternator functioning | Yes |
| Wiring | ★★★★★ |
| Batteries | ★★★★★ |
| Starter | ★★★★★ |
| Cabin lights working | No |
| Additional work lights working | No |

SAFETY ITEMS

| | |
|--------------|-------------|
| Backup alarm | Not Working |
| Seat belt | Available |
| Horn | Not Working |

| | | | | |
|------------------------|--------------------|---------------|---------------|---------------|
| New/Excellent ★★★★★ | Very good ★★★★★ | Good ★★★★★ | Fair ★★★★★ | Poor ★★★★★ |
|------------------------|--------------------|---------------|---------------|---------------|

Copyright Smitma BV

